



Rabbi's Message - Marc Ekstrand

Summer is here. As I write this, Polly and I are getting ready to move from our home in Mystic to a house we are purchasing in New London. God willing, by the time you receive this,

we will have moved into our new home. I am very excited to be making this big commitment to further building our connections in the Greater New London area. I will miss Mystic. It feels like the Stonington Jewish population has doubled since we've been there. Stonington also has the best coffee house around, so I'll be back often.

As we are boxing up and then unboxing our lives, there is still a lot going on at the Temple. We have a wonderful crew of congregants leading services over the summer as well as a few special events including a Shabbat walk in Niantic, our summer outdoor service, and our Bluff Point bagels and bra-chot walk. Check the calendar for times and meeting places.

We had a large turnout for the annual meeting at the beginning of June. It was wonderful to see so many of you. I was glad to have the opportunity to share my reflections on where we have been and where we might go from here. What you should have taken away from our annual meeting is that the strength of Temple Emanu-El is growing. I offered eight big ideas for things we could do in 5780. I have heard positive comments from some of you about a few of them. Here are three big ideas about which I have already had some feedback. I'd like to hear from more of you regarding these ideas that have resonated with some.

- Writing our own Torah scroll – seems daunting? Tradition holds that the last commandment in the Torah tells us that we should write a Torah scroll in our lifetime. Moses tells Joshua, *v'atah kitvu lachem et hashira hazot v'lamdah et b'nai Yisrael* – “Now write this poem and teach it to the children of Israel.” This would be a unique opportunity to study Torah in many different ways – not just reading and interpretation, but studying all the different facets involved in construction and writing a scroll. The project would also help raise significant funds for us to fulfill our mission of community-building.

- Building our relationship with Israel – last year we made a connection with Rabbi Or and Feliza Zohar. They will be back in November and in the spring. Our Federation has maintained our connection to Afula for decades. As the Reform movement in Israel grows, we can make new connections, perhaps with Or and Feliza in the Gallilee – trip to the Gallilee in the spring or summer? Or perhaps we explore a partnership through the Israel Movement for Progressive Judaism's Domim program, which pairs North American congregations with Reform communities in Israel.

- Community Action – Helping the needy is a core imperative of Judaism. There are great needs in our community that are not being met. We can be a more powerful force uplifting people in our community. We can either renew or expand the efforts of many individuals in our congregation to support the New London Meal Center and Homeless Hospitality Center or explore new avenues to partner with social service agencies such as the TVCCA.

These are bold ideas for our congregation. I am ready to partner with you to make them a reality. We are not too small to take on any of these initiatives or others. I am committed to make them happen. All I need is you. Please send me an e-mail at marcekstrand@gmail.com. Let me know if any or none of these projects interest you. I look forward to hearing from you.

L'shalom,

Rabbi Marc

President's Message



On behalf of the Board of Trustees, thank you for trusting us to steer Temple Emanu-El along its mission path: "Building a vibrant community through Reform Judaism."

For those who are "newish" to Temple Emanu-El, this is my second time serving as president. The first time was in 2011. The 8-year time frame has me in a different place in my life. My personal goals are "more mature," I've added another hole to my belt (on the wrong side of the holes), and I forget words. Not quite what 2011 Jonathan would have wanted for 2019 Jonathan.

CONTINUED ON PAGE 2

President's Message — continued from p. 1

Some things, however, do stay the same. I looked back to my first Bulletin article and there were three things I wanted members of our congregation to be able to say about Temple Emanu-El.

1. Temple Emanu-El is a spiritual home where I am comfortable with my Jewish identity and feel valued as a member.
2. The Jewish experience at services is moving and motivating.
3. Temple Emanu-El is a place where youth embrace their Jewish identity.

I intend to keep these as the goals I'd like the Board to focus on.

The Board can't achieve this in a bubble. Working together and communicating will be key. In the spirit of working together, we always need volunteers for any of our many committees. Volunteering is fulfilling, builds relationships, and helps us with our mission. In the spirit of open communication, my messages to you during the year will be about progress toward our mission, goals and summaries of the minutes of the Board meetings to ensure information is shared. The Board of Trustees asks that you communicate with us to make sure we are on the right path.

Before I go running wild into the exciting Temple future (hope you enjoy the ride), I'd be remiss to not recognize Sean Bendick for his two terms as president. Sean was at the helm through the challenging times of an interim rabbi, and the hiring and support of a new rabbi. We are now through the stages of change. We are on solid religious and cultural footing with Rabbi Marc being firmly established in our congregation and in the community.

Thank you, Sean, for keeping us on a path toward "Building a vibrant community through Reform Judaism."

I'll see everyone at Temple!

Jonathan Rowe

P.S.

Did I mention that Sherry is awesome?

**By now you should have received your
Gift of the Heart Membership Packets and
Religious School Packets**

**If you did not, please contact Roberta at
office@tewaterford.org
or call the office 860-443-3005**

Notes from Sherry Barnes



I just returned from my Women Cantors' Network conference. Our keynote speaker, Rebecca Wanatck, from the Jewish Federation of Greater MetroWest, New Jersey, asked us this question: "What does a fully inclusive Jewish Community look like?"

Think about it, what does a fully inclusive Jewish Community look like? Rabbi Marc likes the song Holy Mountain, because it is based on Isaiah 56:7, My House shall be called a house of prayer for all people. The key words are **all people**. The definition of inclusive is: something that does not leave any part or group out or, including everything or all types of people. Being an inclusive community for Temple Emanu-El would mean making sure that every congregant feels welcome and has a sense of belonging. It might mean making sure that our house is a "place where everyone can worship and participate in ways that best suit their needs." Rebecca said, "Diversity is being invited to the party. Inclusion is being asked to dance." Some of the things suggested were projects as simple as having a cup dispenser put on the side of the water fountain so those who are wheelchair bound can get a drink of water; having large print siddurim (prayer books); or having a few hearing amplifying devices.

Inclusivity is not just for those with physical or mental challenges, but also our LGBTQ+ community and people of color. Everyone should feel comfortable and that he or she belongs. We are all created betzelem Elohim, in G'd's image. Belonging happens when we listen to our congregants. How can we better serve your needs?

While at the conference, I learned to play the Ukulele, attended shacharit (morning services), and Mincha Ma'ariv services. We learned the mechanics of the body and new gender pronouns for some in our LGBTQ+ community, and learned at least 20 new pieces of music! Don't worry; I won't use all of them. It's always a great learning experience and I enjoy seeing my colleagues.

If you are interested in joining the choir for the High Holy Days, please e-mail me.

Enjoy your summer and be safe.

B'shir,

Sherry



We hope our students, teachers, faculty assistants and their families are enjoying their summer break so far. While you are all out at the beach or exploring new places while on vacation trips, we will be hard at work making plans for our religious school.

You will soon be receiving your Temple Emanu-El membership renewal and Religious School tuition renewal packets. Please fill out the registration forms and send in your dues and tuition at your earliest convenience so that we can plan appropriately for year 5780.

Please also mark these important dates on your calendar:

**Sunday, August 25, 2:00 P.M. –
Family Get Together / Registration Event**

**Sunday, September 8, 9:30 A.M. –
First day of Religious School**

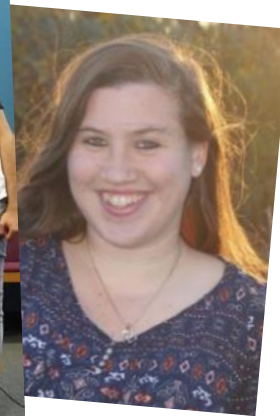
Once we receive the school registration forms, we will forward the school calendar and book order forms.

Wishing you all a great summer!

Armi Rowe and Jennifer Zettler

Co-Administrators

P.S. Congratulations to our faculty assistants, who celebrated their confirmation milestone on Friday, June 7. We appreciated their presence as staff members during the school year. Many of them served their community on Sundays, attended JCHS on Mondays, and made time for monthly confirmation classes on Tuesdays. True mensches!



TERS teacher and aides



*2018-19
Confirmation Class*

Religious Practices

We are looking forward to a summer filled with opportunities to gather and enjoy our community.

Summer services will give congregants a chance to lead our services, which will start at 7:00 P.M. Rabbi Ekstrand and Sherry Barnes will be happy to help you through the process of planning and delivering your Shabbat service. On July 13, we will gather at the Niantic boardwalk at 9:00 A.M. for a leisurely Shabbat stroll. Park in the lot near the bridge (NOT Hole in the Wall) at no charge, since we're not spending time on the beach. July 19 we are looking forward to our outdoor service at the Temple with our cookout and (indoor) picnic.

This service will start at 6:00 P.M.! On August 10, we will have our annual Bluff Point breakfast and walk to the point. The Religious Practices committee provides the bagels and fixings for all. Rabbi Ekstrand and Sherry will lead us in song and appreciation of the beauty of the natural world. The walk is about a mile each way, but if that's not appealing, the picnic area is a beautiful spot near the parking lot. Please join us for these relaxed, sociable, and meaningful events.

Jo Michaelson

Social Action

Summertime, and the living is easy...But not for everyone.

The Temple's Mitzvah Corps is in place and ready to assist.

The goal of the Mitzvah Corps is to help congregants who have emergency needs as well as those of us who need home visits, assistance with rides, getting to appointments, providing help for day-to-day activities, etc. Any Temple member in need of such help or any Temple member who wants to volunteer for the Mitzvah Corps should contact the Temple office at 860-443-3005.

As usual, Temple members provide an evening meal at the New London Community Meals Center on the third Tuesday

of every month. If you would like to volunteer, please contact Hali Keeler. Also, Habitat for Humanity has tentatively scheduled a Sunday Build for July 7. We build together with Congregation Beth El. If interested in volunteering, please contact Marty Zeldis at ztr8n@aol.com.

Temple Emanu-El is helping with an American Red Cross Blood Drive scheduled at the Temple on August 26. If you want to give or help with the drive, contact the temple office.

Enjoy the summer, but help others in any way that you can.

Marty Zeldis

June Mahj Tournament a Wonderful Success

Thank you to all the people who helped make the June tourney such a big success, on so many levels! We were close to our largest number of players, as well as being highly financially profitable. This is a team effort and we have an amazing group that work so well together.

First off, there were all the Sisterhood members who made donations to the Raffle, so that we were able to bring in over \$800 in raffle ticket sales. Barbara Garry again worked her magic to create a beautiful array of gift baskets that made it hard to resist buying a few extra tickets. Then there were the kitchen helpers who prepared a glorious lunch for over 100 people, and the folks who served and cleaned up from the event.

Robbin Alpert and Shelley Arenson helped every step of the way and made it all look easy. And Roberta Reisner-Winograd was always there to provide assistance at every juncture. Lastly, thank you to all the folks that showed their support by coming to play, promoting the event to their friends, and expanding our registration.

Much appreciation for your support:

Donations: Claire Warren, Barbara Wolfe, Judi Deglin, Amy Perry, Edee Smith, Caren Linden, Gail Weber, Sheryl Reagan, Flossie Betten, Shoshanna Weiss, Merrill Kellert, Barbara Kallan, Paula Jacobi, Claudia DeBernardo, Shelley Arenson, Shelley Weiss.

Volunteers: Norma Hollandersky, Barbara Garry, Leslie Spees, Karen Rosenberg, Shoshanna Weiss, Kim Fischburg, Roberta Reisner-Winograd, Shelley Weiss, Merrill Mazzella, Karen Bloustine, Hali Keeler, Amy Perry, Brian Alpert, Jay Alpert, Pat Sher.

And just in case you think we are going to rest on our laurels, **SAVE THE DATE** for our **next MahJongg Tournament**, which will be **Monday, November 4, 2019**.

Thank you all,

Iris

Sisterhood — Merrill Mazzella, President

Mah Jongg

Thank you to Iris Freeman, Robbin Alpert and Shelley Arenson – under their expert direction the Sisterhood held another successful Mah Jongg Tournament! Thank you also to all of the Sisterhood volunteers who helped with the food prep & serving, gave donations and helped with the creation of the beautiful baskets for the raffle. A fun day was had by all!

Temple Emanu-El Gift Shop

The Temple Emanu-El Gift Shop does not have regular hours during the summer. Appointments can be arranged by con-

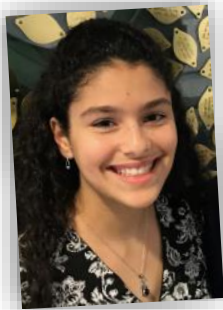
tacting judaicashop@tewaterford.org. Regular hours will resume when Religious School begins in the fall.

It is not too early to think Hanukkah. The seasonal shopping starts in the summer. If there is anything in particular you would like to see, please contact Susan using the email address above.

**Stay tuned for information on our kick-off event in the fall.
Have a great summer!**



Emmerson Kaye Bat Mitzvah



Emmerson Norcia Kaye will become a Bat Mitzvah on Saturday, August 31, 2019, assisting Rabbi Marc Ekstrand and Cantorial Soloist Sherry Barnes in leading services on Friday evening, August 30, and Saturday morning.

Emmerson is the daughter of Rick and Tammy Kaye of Old Lyme, and sister of Regan Kaye. A member of Temple Emanu-El for nine years, Emmerson has fully immersed herself in her religious schooling and temple life, engaging in numerous community service projects and embracing core Jewish values. She is also a member of the Jewish Federation of Eastern CT Junior Youth Group.

Emmerson is a seventh grade high honors student at Lyme - Old Lyme Middle School (LOLMS) where she is a leader in her school community. She is active on the school Science Olympiad team where she has competed in numerous scientific testing and building events. At the State of Connecticut Science Olympiad competition, she earned personal silver medals in Battery Buggy (2018, 2019) and a bronze medal in experimental design (2019). These individual medals helped propel the team to 2nd place finishes overall. Em-

merson also plays the alto saxophone in the LOLMS Concert Band.

As a key member of her Lyme - Old Lyme Soccer Club team, Emmerson is a versatile player who can play any position, but she's particularly effective on defense. She competes in several running events and the long jump on the LOLMS track team. Emmerson also enjoys skiing and dirt bike riding.

Emmerson has a passion for animals, art, and helping others. For her mitzvah project, she has been volunteering with The Shoreline Soup Kitchens & Pantries, a local organization that provides food and fellowship to those in need and educates the community on hunger and poverty. She has volunteered with Kidz Summer Lunch Bunch in Old Saybrook, a program providing nutritious lunches to children who would normally receive free or subsidized lunch when school is in session. This summer she was invited to volunteer with preschool and elementary-school-age children at the Florence Griswold Museum art camp.



June Service & Oneg Thank Yous!

Michael and Florence Betten
Karen Dinsfriend
Elizabeth Bochain and Andrew Feinstein
Susan and Chris Fornara
Rebecca and Mike Haynes
Tammy and Rick Kaye
Emily and Arthur Lerner
Deborah Linder
Caryn and Steven Novick
Erica and Richard McCaffrey
Rachel and Michael O'Brien
Leslie and Harvey Orenstein
Jonathan and Armi Rowe
Jennifer and Scott Zettler
Temple Emanu-El Sisterhood

Special Notes of Thanks

Sincere thanks to all the members of Temple Emanu-El who drove me to Yale and the cancer center for the past year. I can't begin to tell you what it has meant to me. Without any family here, my Temple family came through with much love and caring. I call all of you my "angels."

I also want to thank Rabbi Marc, Sherry and members for coming over to my house to do a Shabbat healing service. After the service was a presentation of a leaf for the Tree of Life to celebrate my 90th birthday from the "chauffeuring" committee. Again, thank you from the bottom of my heart!

With love,

Ethel Chatkin

A big thank-you to our friend, Rabbi Aaron Rosenberg, for his kindness in donating a beautiful Star of David to the chapel at Bride Brook Health and Rehabilitation Center. The chapel is lovely with both Christian and Jewish symbols.

It is not unusual to observe a steady stream of people visiting daily, including Sunday school teachers bringing their students.

With love,

Claudia Shapiro



Condolences to...

Edee Smith
on the passing of her husband
Howard Smith

Mazel Tov to...



Donna and Andrew Goldman,
proud grandparents, and to
Dr. Alissa Goldman Romano and
Bryan Romano,
proud parents, on the birth of
Daria Allyn Romano.

Daria was born on June 14, weighing in at 5 lbs. 1 oz.

Rhonda and Scott Daniels,
super-delighted grandparents, and to
Matthew Daniels and Carolyn Damon Hayes,
proud parents, on the birth of
George Hayes Daniels.

George was born on June 16, weighing in at 8 lbs. 3 oz.

Mimi and Ed Perl
proud grandparents, and to
Jennifer and Wes Thompson,
proud parents, on the birth of
Summer Jeanne Thompson.

Summer was born on June 24, weighing 7 lbs. 14 oz.



Welcome to a new generation!

Nar-Anon

Temple Emanu-El hosts Nar-Anon meetings every Thursday from 7:00-8:30 P.M. Nar-Anon meetings are primarily for those who know or have known a feeling of desperation concerning the addiction problem of someone close to them. If you are one of these people, come join us on Thursday evenings. This is your opportunity to engage in your own process of recovery.

If you would like more information or need help determining if Nar-Anon is right for you, contact Rabbi Ekstrand.

Crohn's & Colitis Foundation Support Group

Temple Emanu-El hosts Crohn's & Colitis Foundation support group meetings the second Wednesday of the month, starting at 7:30 P.M. Living with Crohn's disease or Ulcerative Colitis can be difficult, but the right resources and support can make day-to-day living easier.

Hope After Loss

Temple Emanu-El hosts Hope After Loss meetings the second Thursday of the month, 7:00 – 8:30 P.M. The group provides free peer bereavement support programs to women and men who grieve the loss of a pregnancy or infant. They help one another on their journey of healing.

Hebrew Translation Class

I will be teaching an introduction/review to translating and understanding Hebrew prayers.

The 8 week class will be offered over the summer on Wednesday afternoons from, 12:30 to 1:30. It will begin on July 10, and end on Aug. 28.

Reading Hebrew is a must for this class.

Kol tuv,
Sherry



**Bagels, Brachas at
Bluff Point
Saturday, August 10,
at 9:30 AM**

The Temple Emanu-El Religious Practices Committee invites you to join them for a picnic near the parking lot of Bluff Point in Groton on Sat., August 10, at 9:30 AM.

At 10:30 AM we will hike out to the Point, where Cantorial Soloist Sherry Barnes will lead us in songs and Rabbi Marc Ekstrand will share Jewish quotes on nature.

The breakfast is provided, but you are welcome to augment it if you like.

No RSVP necessary. Come and enjoy!

July Birthdays

Robbin Alpert
Matthew Barnes
Craig Bentley
Melinda Blum
Elizabeth Bochain
Bill Bokoff
Megan Dame
Eric Diehl
Jonah Feldman
Julia Fischburg
Mae Flax
Iris Freeman
Jared Freeman
Sam Friedman
Sophia Gipstein
Dr. Alissa Goldman Romano
Cori Goldman Segal
Sue Goldstein
Rebecca Goldstein

Gabe Grossman
Meridith Hans
Paul Kanfer
Hali Keeler
David Kohanski
Louis Kronisch
Arthur Lerner
Judy Levine
Matthew L. Lewiss
Bob Linden
Robin Margolis Silsby
Jacqueline Mazza
Jennifer Anne Michalove
Jacoby Parad
Nickolas Randall
Armi Rowe
Dianne Rubin

Madeline Sayet
Donna Schneider
Jane Schnur
Charles Seeman
William Seeman
Rebecca Segal
Mary Seidner
Libby Seidner
Veronica (Vee) Sherman
Matthew Shulman
Janine Sitko
Lauren Stavropoulos
Lois Steinman
Jennifer Perl Thompson
David Todaro
Samantha Venooker
Ella Jordyn Venooker

Grace O. Walz
Claire Warren
Gail Wildstein
Martin Zeldis
Lori Zelvin



July Yahrzeits



July 5

Elizabeth M. Bochain
Herbert Boehner
Sarah Chevan
Dr. Irving Fox
Marion Gottfried
Sarah Hytone
Israel Lazev
Ella Levine
Mina Liberman
Fannie Rosefeldt
Jeannette Rosenstein
Marie Rouquette
Alex J-C Shulman

July 12

Michael Comer
Hans Einhellig
Edna Epstein
James Fearer
William Greenhalgh
Mary Jane Helveston
Aaron Isaac
Selma Krieger
Samuel Penstein
Elaine Perry
Bernard Sharack



Brian Archer Thorp
Alexander Moron Wessel

July 19

Meta Altman
Muriel Berkowitz
Sol Brown
Michael Comer
Irma DeBruyn
David Feldman
Barney Fishbone
William Gordon
Stanley Jacobson
Sarah Mazur
Jerry Moynihan
Harry Ogulnick
Barbara Rubin
Fay Rubin
Fern Robin
Pearl Parker
Jacob Snitman

July 26

Max Burns
Miriam Bloom
Janet Bruck
Thomas Cherry
Anatoly Fishman
Samuel Libby
Yetta Sechter Millstein



Wade Nelson
Dr. Solomon Prokesch
Nathan Rappoport
Marjorie Thomas
Muriel Schneider
Betty Silverman
Melvin Snitman
Judy Gorin Stewart
Harry Tulman
Dorothy West
Joseph Ziegler



July

Anniversaries



Paul and Monica Goldstein
Jay and Patricia Hans
Peter and Lisa Marcus
Edward and Mimi Perl
Harvey and Michele Snitkin
Jay and Julie Snoke
Scott and Barbara Wolfe



August Birthdays

Brian Alpert
Daniel Arenson
Shelley Arenson
Brian Blaise
Danielle Blaise
Adora Antje Brengman
Margaret Church
Elissa DeBruyn
Louise Feldman Baskey
Kathleen Flax
David Freedman
Donna Goldman
Steve Goldstein
Hannah Goldstein
Gabriel Grossman
Max Grossman
Eleanor Hoffman
Thea Kallan Johnson
Emmerson Kaye

Gerry Keeler
Brian Kent
Pamela Kilbey-Fox
Lauren Kirschblum
Jordan C. Levin
David Levine
Beth Linden
Anne Luner
Alan Luner
Kathy Michalove
Mimi Perl
Shoshana Phillips
Stephen Piotrkowski
Jenna Randall

Hunter Rock
Karen Rosenberg
Rachel Sayet
Talia Schaperow
Ellen Seeman
Brett Seeman
Jake Sheriff
Leah Shiling
Adriana Shiling
Leah Shiling
Adriana Shiling
Todd Siegel
Jamie Stavropoulos
Donald Steinman

Sunny Steinway
Matthew Teeter
Andrew Venooker
Michael Evan Weber
Aaron Scott Weber
Shelley Weiss
Sam Winograd
Rebecca
Woodward
Jennifer
Zettler



August Anniversaries

Michael and Florence Betten
Brian and Marcie Blaise
Howard and Marcia
Brensilver
Mark and Marianne DeBruyn
Bruce and Lori Goldstein
Alan and Patricia Gruber
Geoff and Susan Hausmann
Robert and Eleanor Hoffman
Alan and Norma Hollandersky
Joel and Avery Holwitt
Peter and Barbara Kallan
Philip and Ethel Krasney
Keith Kriet and Debra Miller
Roark and Judy Levine
Anthony and Jacqueline
Mazza
Harvey and Leslie Orenstein
Stephen and Lois Panikoff
Chris and Jennifer Rock
Marvin and Jane Schnur
Thomas Smith and Irene
Brickman Smith
Steve and Gail Weber
Joel and Gail Wildstein



August Yahrzeits



August 2

Leah Goldberg Asen
Louis Atkind
Philip Betten
Laura Bor
Arthur Camassar
Joseph Eisenberg
Jonathan Fox
Alan Freeman
Lawrence Grayson
Howard Ilson
Eileen Iorillo
Morton Klieback
Fay Kracke
Arthur Krieger
Sallie LeVine
Irene Levy
Abraham Pastel
Murray Perl
Claire Perry
Maurice Rosenstein
Bessie Snitkin
John Vogel
Julius Webman
Daniel Zager

August 9

Rose GordonL
Frances Ofstein
Maude Harriet
Dorothy Friedman
Rebecca Merims Stoner
Yetta Sedransk
Warren Hollandersky
Abraham Gottfried
Beatrice Rovner

Rose Baker
Harvey Bloom
Rose Barnett
Julius Cooper
Fannie Amdur
Isadore Gottfried

August 16

Joseph Abrahms
Joseph Abrams
Suzannah Amdur
Samuel Diamond
Nicholas Doukas
Rose Feigenbaum
Diana Fischburg
Benjamin Gordon
Barbara Hausmann
Shirley Hendel
Naomi Kerwin
Bessie Kline
Dorothy Levine
Barney Millstein
Ruth O'Brien
Lottie Rodkin
Mildred Schiller
Orrin Silverberg
Sharon Spiegel
Miriam Toplosky
Irving Allan Wildstein
Harry Winterholer
August 23
Etta Andelman
Michael Atkind
Richard Blaise
Marcia Carlow
Charles Church
Frederick Eichler

Belle Eidensohn
Ada Engelman
Louis Galvin
Dorothy Goldman
Milton Goldsmith
Irving Goodstein
Barbara Haflich
Morton Kallan
Bella Kil
Angela Klieback
Howard E. Proper
Lamchick
Sherman Marcus
Fred Michalove
Laura RichardsonL
Harry Ruck
Mark Sayet
Bernice Bunny Stern
Jeanne Swatzburg
Paul Trzepacz
Stuart Wickson

August 30

Eduard Alper
Michele Abrams
Eleanor Grossman
Bill Katz
Emily Lasser
Dr. Arnold Feldman
Samuel Wertheim
Ascuncion Reyes
Marshall Rubin
Sam Gischner
Hersch Muchnick
George Lupkay



July & August Services & Schedule of Events

July 5	Fri.	7:00 P.M.	Shabbat Evening Service
July 10	Wed.	12:30 P.M.	Learning to translate Prayerbook Hebrew
		7:30 P.M.	Crohns & Colitis Support Group
July 11	Thur.	7:00 P.M.	Nar-Anon
		7:00 P.M.	Hope After Loss
July 12	Fri.	7:00 P.M.	Shabbat Evening Service
July 13	Sat.	9:00 A.M.	Shabbat Stroll along the Niantic Boardwalk
			Meet by the bridge (not the Hole in the Wall)
July 15	Mon.	12:20 P.M.	Jewish Federation Senior Lunch
		7:30 P.M.	Board of Trustees Meeting
July 17	Wed.	12:30 P.M.	Learning to translate Prayerbook Hebrew
July 18	Thur.	7:00 P.M.	Nar-Anon
July 19	Fri.	6:00 P.M.	Shabbat Outdoor Service
		7:00 P.M.	Shabbat BBQ
July 24	Wed.	12:30 P.M.	Learning to translate Prayerbook Hebrew
July 25	Thur.	7:00 P.M.	Nar-Anon
July 26	Fri.	7:00 P.M.	Shabbat Evening Service led by Yachad BBYO
July 31	Wed.	12:30 P.M.	Learning to translate Prayerbook Hebrew
August 1	Thur.	7:00 P.M.	Nar-Anon
August 2	Fri.	7:00 P.M.	Shabbat Evening Service led by the Religious Practices Committee
			Torah Reader - Barbara Senges
August 7	Wed.	12:30 P.M.	Learning to translate Prayerbook Hebrew
August 8	Thur.	7:00 P.M.	Nar-Anon
		7:00 P.M.	Hope After Loss
August 9	Fri.	7:00 P.M.	Shabbat Evening Service led by Barbara Luftglass Morea
			Torah Reader – Barbara Luftglass Morea
August 10	Sat.	9:30 A.M.	Bagels and Brachas at Bluff Point
August 12	Mon.	12:30 P.M.	Jewish Federation Senior Lunch
August 14	Wed.	12:30 P.M.	Learning to translate Prayerbook Hebrew
		7:00 P.M.	Crohn's & Colitis Foundation Support Group
August 15	Thur.	7:00 P.M.	Nar-Anon
August 16	Fri.	7:00 P.M.	Shabbat Evening Service led by Karen Bloustine and Michele Snitkin
August 21	Wed.	12:30 P.M.	Learning to translate Prayerbook Hebrew
August 22	Thur.	7:00 P.M.	Nar-Anon
August 23	Fri.	7:00 P.M.	Shabbat Evening Service led Norma Hollandersky, Edee Smith, & Sherry
			Torah Reader Pat Sher and Sermon by Regina
August 25	Sun.	2:00 P.M.	Religious School Picnic
August 26	Mon.	1:00–6:00 P.M.	Red Cross Blood Drive, sign up to donate at redcross.org
August 28	Wed.	12:30 P.M.	Learning to translate Prayerbook Hebrew
August 29	Thur.	7:00 P.M.	Nar-Anon
August 30	Fri.	7:30 P.M.	Shabbat Evening Service
August 31	Sat.	10:30 A.M.	Shabbat Morning Service- Emmerson Kaye Bat Mitzvah

We are eternally thankful for the support of those below. . .

Rabbi Discretionary Fund

Richard and Lore Abrahams

----thank you, Rabbi Ekstrand, for the kind service for
Capt. Richard N. Abrahams at the Coast Guard Academy

Aaron & Pearl Parker Religious School fund

Ronald and Jane Elkin

----in loving memory of Aaron Parker on his yahrzeit

Alter Fund

Frederic West

----in loving memory of Abner West on his yahrzeit

Cantor's Fund

Elsa Freedman

----mazel tov to Edee Smith on her becoming a Bat Mitzvah

----mazel tov to Steffi Rubin on her becoming a Bat Mitzvah

Jay and Patricia Hans

----for Sherry Barne's good health

Norma Hollandersky

----congratulations to Edee Smith on becoming a Bat Mitzvah

----congratulations to Steffie Rubin on becoming a Bat
Mitzvah

Capital Improvements Fund

Adam Kaufman

Rebecca Woodward

Essential Services Fund

Marlis Jacobowitz

Abraham and Sandra Fisher

----congratulations to Steffie Rubin on becoming a Bat
Mitzvah

----congratulations to Edee Smith on becoming a Bat Mitzvah

----sympathy to Edee Smith on the loss of her beloved
husband, Howard

Gail and Steve Weber

----in honor of the B'not Bat Mitzvah of Edee Smith and
Steffi Rubin

Jay and Patricia Hans

----in memory of Marcia Reinhard's mother, Shirley Feuerman

----in honor of Michael Betten receiving the Howard Ilson
Award

----in honor of Sean Bendick

Karen Dinsfriend

----in memory of Howard Smith

Kenneth and Kimberly Fischburg

----in honor of Michael Betten receiving the Howard Ilson
Award

Lois and Stephen Panikoff

----in memory of Terri Goldsmith

----in memory of Gail Webman

----in honor of Michael Betten receiving the Howard Ilson
Award

Marshall and Florence Wice

----in honor of the Bat Mitzvah of Steffi Rubin

Peter and Barbara Kallan

----in memory of Howard Smith

Sam Winograd

Roberta Reisner Winograd

----in memory of Howard Smith

----in memory of Michael Goodman, father of Jennifer Zettler

----in honor of Edee Smith's Bat Mitzvah

Seymour and Patricia Hendel

----in memory of Nathan Paulson

Temple Emanu-El Board

----in honor of Sean Bendick

The Kil Family

----in loving memory of Stuart Glenn on his yahrzeit

----in loving memory of Boris Kil on his yahrzeit

Isaaca Siegel Landscaping Fund

Barry and Cecile Feldman

----in memory of Michael Goodman, father of Jennifer Zettler

----in memory of Howard Smith, husband of Edee Smith

Elsa Freedman

----sincere condolences to Edee Smith on the recent passing
of her husband Howard Smith

----in memory of Howard Smith

Kitchen Fund

Andrea and Paul Kanfer

----in honor of the Bat Mitzvah of Edee Smith and Steffi Rubin

----in memory of Howard Smith

Mitzvah Fund

Ethel Chatkin

----in honor of Michael Betten receiving the Howard Ilson
Award

Florence Betten

----in honor of Edee Smith's Bat Mitzvah

Irving and Edith Ziegler

----in loving memory of Sarah Ziegler on her yahrzeit

Judy and Stephen Mann

----in honor of Rabbi Aaron and Karen Rosenberg's 50th
anniversary

Kenneth and Kimberly Fischburg

----in loving memory of Sylvia Eisenberg on her yahrzeit

----in loving memory of Mary Jane Helveston on her yahrzeit

----in loving memory of Joe Eilenberg on his yahrzeit

----in loving memory of Diana Fischburg on her yahrzeit

Oneg Fund

Florence Betten

----in honor of Edee Smith's Bat Mitzvah

----in honor of Steffie Rubin's Bat Mitzvah

CONTINUED ON PAGE 11

Please make checks payable to Temple Emanu-El and remit to PO Box 288, Waterford, CT 06385

Leslie and Harvey Orenstein & Family
---- in loving memory of our father, grandfather, and papa
Alvin "Sonny" Flitt on his yahrzeit

Rabbi Aaron Rosenberg Tikkun Olam Scholarship Fund

Norma Hollandersky
---- happy 50th birthday to Jonathan Rowe
---- happy 50th birthday to Rabbi Marc Ekstrand
Irma Flitt
---- in loving memory of Shirley Lebowitz on her yahrzeit
Jay and Patricia Hans
---- in honor of Rabbi Aaron and Karen Rosenberg's 50th anniversary

Rabbi's Discretionary Fund

Irma Flitt
---- in loving memory of Alvin "Sonny" Flitt on his yahrzeit

Ruth Joan Brody Religious School Fund

Kenneth Sunshine
---- in loving memory of Edna Sunshine on her yahrzeit
Leslie, Jeff and Adam Spees
---- in loving memory of Larry Spees on his yahrzeit

Torah Fund

Karen Dinsfriend
---- in honor of Edee Smith's Bat Mitzvah



**OUTDOOR SHABBAT SERVICE AND
BARBECUE
WITH YOUR TEMPLE FAMILY**

Friday, July 19, 2019

Shabbat service – 6:00 p.m.

Shabbat barbecue – 7:00 p.m.

The Religious Practices committee invites you and your entire family to partake of our **twelfth** annual Shabbat service and barbecue. Come share an outdoor service and experience the spirituality of Shabbat combined with the beauty of nature and a summer evening. Services will be led by Rabbi Marc Ekstrand and Cantorial Soloist Sherry Barnes.

Enjoy a delicious Shabbat barbecue – chicken, hot dogs, veggie burgers, hamburgers, a variety of salads, corn on the cob, fruit, cookies and beverage.

**I/We would like to attend the 12th annual Shabbat barbecue on July 19
RSVP by July 12 with payment**

Name _____
Phone: _____
Email: _____

\$16.00/per adult \$10.00/children under 12

Number of adults _____, Number of children _____

Number of vegetarian/vegan meals _____

Amount Enclosed: _____

Mail to: Temple Emanu-El, P.O. Box 288, Waterford, CT 06385 / 860-443-3005

Support Temple Advertisers • \$18 monthly • \$165 for 11 months • Call 860-443-3005



RE/MAX®
ON THE BAY

**FOR ALL YOUR
REAL ESTATE NEEDS**

Direct: 860-443-4400 Cell: 860-625-5255

Email: Geoff@CallTheHouseMan.com

Website: www.CallTheHouseman.com

Blog: CTHouseMan.com



EAST LYME
Oral & Maxillofacial
SURGERY

KIRK F. ENGEL, DMD

314 Flanders Road

East Lyme, CT 06333

t. 860.739.3133

f. 860.739.3131

eastlymeoralsurgery.com

A Top Oral & Maxillofacial Surgeon in Connecticut Magazine
Diplomate, American Board of Oral & Maxillofacial Surgery
National Dental Board of Anesthesiology

Please support
Bulletin
Advertisers!

* * *

THE City NEVER SLEEPS!
MYWHALINGCITY.COM • OPEN 24/7
BROAD & COLMAN ST, NEW LONDON • 860.443.8361
MY WHALING City
LINCOLN
Chuck & Romana Primus
(860) 443-CITY (2487)

NEW LONDON
SELF-STORAGE
CLIMATE CONTROLLED
860-442-0008
www.NLSelfStorage.com

*Conveniently Located Just Over
the Waterford Town Line
at 940 Bank St., R.L. Hobbs Sign-A-Rama*

Brand New, Clean Facility
24/7 Video Surveillance
Secure Gate with Keypad Entry
Month to Month Rentals
Free "We'll Pick It Up" Service
Locally Owned & Managed
200+ Units - 6 Sizes, up to 10'4" ht.
Climate Controlled Automobile Bays
Boxes, Locks, Packing Supplies

YOUR AD COULD BE HERE!

\$18 /month or \$165 for 11 months for business card size

Call or email Roberta at 860-443-3005

office@tewaterford.org

TEMPLE EMANU-EL
PO BOX 288
WATERFORD, CT 06385

Please use PO BOX 288 WATERFORD, CT 06385
when mailing material to the temple

Non-Profit
Organization
U.S. Postage
PAID
New London, CT
06320
Permit #480

Deadline for September 2019 Bulletin is Friday, August 16

Email your articles to Roberta at office@tewaterford.org

CHANGE SERVICE REQUESTED

Our Leadership

Rabbi / Marc Ekstrand / rabbi@tewaterford.org
Rabbi Emeritus / Aaron Rosenberg / arloveskr@aol.com
Cantorial Soloist / Sherry Barnes /
cantorialsoloist@tewaterford.org
President / Jonathan Rowe / president@tewaterford.org
1st Vice President / Jo-el Fernandez —
vicepresident@tewaterford.org
VP of Building and Grounds / Russell Sheikowitz /
buildingsgrounds@tewaterford.org
VP of Religious Practices / Jo Michaelson
Treasurer / Thomas Smith / treasurer@tewaterford.org
Financial Secretary / Bruce Goldstein
Recording Secretary / Elyse Hicks
Corresponding Secretary / Deborah Linder
Immediate Past President / Sean Bendick /
pastpresident@tewaterford.org
3 Year Trustees: Rebecca Haynes, Rachel Sherman, Gail Weber,
Scott Wolfe
2 Year Trustees: Paul Kanfer, Steve Panikoff, Andy Parad,
Marcia Reinhard

1 Year Trustees: Stanley Bloustine, Abe Fisher, Erica McCaffrey,
Amy Perry
Membership Co-Chairs / Allison Glickman & Erica McCaffrey
Social Action Chair / Marty Zeldis
Sisterhood / Merrill Mazzella / sisterhood@tewaterford.org
Gift Shop / judaicashop@tewaterford.org
Brotherhood / Scott Zettler / brotherhood@tewaterford.org
Kitchen Committee Chair / Edee Smith
Religious School Administrators / Armi Rowe &
Jennifer Zettler / religiousschool@tewaterford.org
Office Administrator / Roberta Reisner-Winograd /
office@tewaterford.org
Webmaster / Aaron Kaplan / webmaster2@tewaterford.org
Custodian / Don Kasper
Bulletin Editor / Mimi Perl

Location: 29 Dayton Road, Waterford, CT 06385

Mailing Address: PO Box 288, Waterford, CT 06385

Office: **860-443-3005**

Religious School: **860-439-0406**

Website: www.tewaterford.org