



Rabbi's Message - Marc Ekstrand

Friends,

A few days before Purim last year, a storm cloud was threatening on the horizon. Immediately after Purim, the

storm hit. The pandemic set in. Political division escalated. Racial tensions exploded. The death toll from Covid-19 has risen beyond belief. We witnessed an unprecedented attack on Congress. Each day seemed to bring more anxiety, and the future seemed less certain. As Purim approaches this year, it feels like we can begin to breathe – but still through a mask.

We are on the cusp of the month of Adar, said to be the happiest month on the Jewish calendar because of the Purim celebration marking mythic Esther's saving of her people. The Purim story in the book of Esther is pure fiction. We can't tie it to any particular history, Jewish, Persian, or otherwise. It is filled with caricatures: a buffoon king, a vicious political scoundrel, a court Jew, hidden identity, and a persecuted people. It is the characters that reappear from time to time throughout real history. We dress up on Purim and make fun of the characters and the disturbing tale because we know by experience that abuse of power, gross incompetence, and persecution is all too real. For Jews, segregation, villainization, and persecution is history, not a myth. We have empathy for victims of all forms of hate and discrimination. Empathy bears hope.

We can begin this month of Adar with hope. We have a new President and Vice-President. We look to the President for hope in the present moment. The problems we face are of such great magnitude: pandemic, racism, wealth inequality, and climate change. He must guide us as we meet these urgent existential challenges. He must find opportunities to bridge the vast political divide for the sake of our nation and the world. We

can effectively deal with these problems only if we are unified. Through words and action, the President is showing his commitment to necessary healing bridge building. As much as our nation needs a unifying President, the President needs us to be willing to unify even more so.

We look to the Vice-President with hope for our future. Hope that her achievement solidifies and catalyzes even more significant progress toward diversity, equity, and inclusion in every facet of life. So many more children now have a real face to inspire their dreams. Esther got a shot at being Queen in a superficial beauty contest. The Vice-President earned her position through a lifetime of study, hard work, building relationships, working harder to jump the higher hurdles put in her path. She has a depth of character, strength of will, and openness of heart. Her Vice-Presidency gives every young woman and every minority young person a model of achievement by someone who looks more like them. It is also uplifting to see a Jewish Second Gentleman, step-parents, and a blended family getting ready to move into the Vice-President's residence (after a few needed renovations in the 1893 house).

As this Hebrew month of Adar approaches, the pandemic has not yet abated. However, we'll still be singing *mi'she nichnas Adar, marbin b'simcha* – as Adar begins, our joy increases because of real hope in our present and future. May our Purim joy be symbolic of actual unifying steps toward a more healthy nation.

L'shalom,

Rabbi Marc



President's Message



What does it mean to be a leader? As I write this, on a national level we are a few days out from the Presidential inauguration, and several weeks out from a serious assault on our nation's democracy and on the leaders who have vowed to protect it.

The process of transfer of power from one administration to another was anything but peaceful, although in the end, democracy and the values of our nation prevailed.

Here at Temple Emanu-El, we thankfully have far more congenial and cooperative relationships amongst our lay leaders, clergy, and staff. There is mutual respect, camaraderie, and flexibility in the decision making that goes into running a successful temple community. We often remind one another of our mission statement, "Building a vibrant community through Reform Judaism". Our mission statement reflects who we are and our reason for being. However, the next step is determining our direction and aspirations by focusing on what we will be doing over the next few years to fulfill our mission. To that end, an ad hoc committee will be created to go the next step and develop a vision statement. Please contact me if you are interested in serving on this committee.

In Community Campus news, there was discussion of the need for a vision and a strategic plan for the campus project as well. To that end, a subcommittee consisting of the presidents and senior staff of all three organizations (myself and Rabbi Ekstrand from Temple Emanu-El, president Kathleen McFadden and Rabbi Kideckel of Congregation Beth El, and president Romana Primus and executive director Carin Savel of JFEC) will be working together to develop a strategic plan. Gail Weber continues to expertly lead the Community Campus committee, and her updates will ap-

pear regularly in the Jewish Leader as new developments occur. Please contact Gail, myself, or any other member of the committee with any questions regarding this process.

On a positive note, we applied for and were granted forgiveness of the PPP loan that we received in the spring. I am currently in process of applying for the 2nd draw PPP loan. I owe a huge debt of gratitude to Roberta for sifting through all of our financial information and getting everything to me in an orderly and expeditious fashion to assist me in determining eligibility and submitting the application. Hopefully, we will be granted this loan as well to help offset the impact of the pandemic on our temple operations.

In board business, there was discussion and approval for an update in our phone system, to include a VOIP phone system, stronger Wi-Fi, and new wiring to support the above as well as the planned security upgrades. This year has made it clear that even after the pandemic, we will continue to require an online presence and will be streaming services as a regular part of our operations, even when we are able to gather in person again. Many thanks to Bruce Goldstein and Russell Sheikowitz for the many hours of work that they put into investigating this and determining the best system at the best price to meet our needs.

Finally, it is almost time for the nomination of new board members to replace those who have reached the end of their terms. A nominating committee will be forming in the near future in order to develop and present a slate of officers and trustees to the board in the spring, and then to the annual meeting in June. If you are interested in serving on the Temple Emanu-El board, please contact me or vice president Andy Parad.

L'shalom,

Jo-el Fernandez

Notes from Sherry Barnes

February 19, marks a year since my mother's passing. There is an internal feeling of being off balance. A year that feels like forever, yet also seems to have passed in the blink of an eye. I liken it to driving in a car. Looking forward to the road ahead, it seems to move slow-

ly. Looking through the side windows objects are a blur. Looking into the rear view mirror, the images move away from you very quickly. It sounds like a metaphor for life.

CONTINUED ON PAGE 3

Notes from Sherry Barnes -- CONTINUED FROM PAGE 2



Many of us lost loved ones in 2020, and over our lifetime. In Mishkan T'filah, there is a poem, "We Remember Them", written by Rabbi Sylvan Kamens. The last line of the poem is, "So long as we live, they too shall live, for they are now a part of us, as we remember them."

Remembering, though sometimes bringing tears to our eyes and sadness in our heart, is how we keep our loved ones alive. Their memories are a part of us and their stories become the stories we share with family and friends. So, in memory of my mom, I'd like to share a memory with you. I remember a poem that my mom had fallen in love with called, "High Flight". It was written by John Gillespie Magee in September of 1941. The words written by this Royal Canadian Air Force pilot paint a magnificent picture for us.

*Oh! I have slipped the surly bonds of Earth
And danced the skies on laughter-silvered wings;
Sunward I've climbed, and joined the tumbling
mirth
Of sun-split clouds, and done a hundred things
You have not dreamed of - wheeled and soared
and swung*

*High in the sunlit silence. Hov'ring there
I've chased the shouting wind along, and flung
My eager craft through footless halls of air...
Up, up the long, delirious, burning blue
I've topped the wind-swept heights with easy
grace
Where never a lark nor ever eagle flew-
And, while with silent lifting mind I've trod
The high untrespassed sanctity of space,
Put out my hand, and touched the face of God.*

Most of you know that my dad served in the Air Force and so the poem reminded me of the Air Force pilots I had seen and what it must feel like to fly. When I found the poem the other day and remembered how much mom loved it, I reread it, and it now reminds me of my mom... free of pain, slipping the surly bonds of Earth... climbing sunward through the clouds. Putting out her hand and touching the face of God. Aleha ha-shalom. May she Rest In Peace.

May the beautiful memories of those we have lost, bring us comfort, smiles, and a full heart, as they continue to live through us, as we remember them.

B'shir,

Sherry

Religious School 860-439-0406 | religiousschool@tewaterford.org

It was lovely to gather with our religious school families during the First Friday Family Shabbat of 2021 on Friday, January 8. We enjoyed Rabbi Marc's stories and Hazzan Sherry's songs in celebration of the Tu B'Shevat holiday.

During this season, we have eaten dried fruit, nuts and fruit or planted trees to show appreciation for the birth of trees in Israel. We have also thought of Tu B'Shevat as a sort of Jewish Earth Day. The Torah teaches us not only to be good to each other but also to care for the environment that we were given. On Friday, January 22, we hosted special Tu B'Shevat activities at our Fun Family Friday event. The students enjoyed gathering on zoom to create three Tu B'Shevat projects using supplies and info we provided through Tu B'Shevat activity bags



that we delivered to families ahead of time. Together we built bird feeders using simple materials found in the home, created artwork using recyclable materials around the house, and planted parsley from seeds, which may hopefully be harvested in time for Passover.

Kitah Gan, Alef-Bet A and Alef-Bet B students will enjoy music time together

again. We will plan group classes in one zoom meeting on specific upcoming Sunday mornings at 9:30 a.m. so the kids can see each other and sing songs together with Hazzan Sherry. Please stay tuned for the dates and zoom links which we will soon e-mail to families.

We have also been missing the presence of Young Israeli Emissaries in our community this year. So, thanks

CONTINUED ON PAGE 4

Religious School -- continued from page 3

to Marcia Reinhard, there will be opportunities for the students to meet virtually with past emissaries for special Hebrew activities. Once we have confirmed the availability of participating emissaries, we will schedule these wonderful enrichment sessions for our students.

We hope to see you all again at our next First Friday Family Shabbat on Friday, February 5, 2021 at 6:45 p.m.

Tot Shabbat is at 6:45pm and Tefillah Time is at 7:05pm. Stay on for regular Shabbat service beginning at 7:30pm.

On Sunday, February 21, in lieu of regular class lessons, we will host one zoom call from 10:30-11:30am for our school-wide Purim Celebration. We invite our students to participate in our traditional costume con-

test (categories: most creative, most colorful, most original and best Purim-themed). We also look forward to entries for the grogger contest (categories: loudest, most obnoxious and most creative). We will award prizes to our costume and grogger contest winners. We also look forward to having our student-led family-friendly Megillah reading.

Please also save the date for our next Fun Family Friday event on Friday, February 26 from 6:00-7:00pm. We will lead our students and their families in virtual hamantaschen baking fun.

Cheers,

Armi and Jennifer

Sisterhood -- Merrill Mazzella & Gail Weber, Co-Presidents

Dear Sisterhood friends,

Gail and I would like to congratulate our fellow Sisterhood board member, Cecile Feldman, on being awarded the temple honor of the Howard Ilson Award for being an outstanding member of the congregation, and giving years of service to the temple. Mazel Tov, Cécile!!!

Below is a listing of some wonderful programs that we'd like to encourage you to participate in with us. Some are through our Sisterhood and some are through organizations that support the Sisterhood. Stay tuned for more programming news as we head into February.

Best,

Merrill & Gail



Merrill and Gail just went on a 4 day virtual bus tour with tour guide, **Shari Robins**. It was "Israel Through the 5 Senses". Shari did an amazing presentation incorporating songs, dances, tours inside muse-

ums and marketplaces. So we wanted you to know about this program since we are all looking for interesting things to do. Consider signing up for the WRJ emails. They have put together some wonderful programs.

Join WRJ on Feb. 11 at 12 P.M. [A Jewish Valentine's Tour with Shari Robins](https://urj.zoom.us/j/648123456789) using the following link: <https://urj.zoom.us/j/648123456789>

Book Club: Join us on **Monday, February 8 at 7:00 p.m.** – **"The Rise of the Rocket Girls - The Women Who Propelled Us, from Missiles to the Moon to Mars"** by **Nathalia Holt** - the riveting true story of the women who launched America into space.

SAVE THE DATE: Our next Book Club meeting will take place on **Sunday, April 11 at 2:00 p.m.** when we will join with Hadassah for a virtual talk by Professor Laurence Tribe of Harvard University who will discuss his family's experience as Jewish survivors living in Shanghai after the pogroms of Russia and the Holocaust. The book that recounts this time in the history of China is **"The Last Kings of Shanghai - The Rival Jewish Dynasties That Helped Create Modern China,"** by **Jonathan Kaufman**. We hope that you'll join us for what is sure to be a fascinating discussion!

CONTINUED ON PAGE 5

Sisterhood -- continued from page 4

Fried Virtual Women's Conference: The Fried Women's Conference is WRJ's flagship event. The FWC has invited all members of the Sisterhood to attend this virtual conference. **Friday-Sunday, March 12-14, 2021.** It is a multi-day experience to hone leadership skills, further Jewish learning, partake in women-led worship and music, and deepen connections with other sisterhoods, women, and WRJ at large. **Cost is \$54.00.** [Click here](#) for more information and to sign up.

Purim is Feb. 25: Purim delivery helpers are needed by Deb Linder for Mishloach Manot fundraiser deliveries. If you can help with deliveries, please email Deb at deborahlinder29@yahoo.com.

Temple Emanu-El Gift Shop:

It is incredible that we are all ready in February 2021. It is almost a year since we have all been together at the Temple. Since that time, the Temple Emanu-El Judaica Shop website has been created. As of now, there are

about 320 items on the website. The majority of merchandise is now on the website including all the Passover items. Now you can shop at the Judaica Shop whenever you want.

The website is best viewed on a computer, not a mobile device. Please contact Judaicashop@tewaterford.org with the item number and we will arrange a parking lot meeting. Payment made in cash or check will be exchanged at the time of meeting. Due to work obligations, during the months of February, March and part of April, I will have to limit times for pickups. Probably most pickup meetings will be scheduled during the weekends.

Currently, most of the merchandise is being stored off site. Please contact Judaicashop@tewaterford.org for all orders and inquiries.

Hopefully, we will soon have plans to return to the Temple.

Susan Hausmann

Condolences to...

Greg and Barbara Morea

on the passing of Greg's father,

William J. Morea

Mazel Tov to...

Claudia and Lester Shapiro

on celebrating their

60th wedding anniversary



Lox Down Lunch with a Friend

BYOB -- Bring your own bagel

Live Music and Schmoozing
with Harvey Snitkin (Me and My Shadow)
for seniors and those that are homebound

Every Friday starting February 5, 2021
12:00 - 1:00 P.M.

Zoom link will be in weekly e-mails and on the Temple Emanu-El Website Calendar:
www.tewaterford.org

Events & Service Schedule

Zoom Links can be found on the Temple Website Calendar for events and services.

www.tewaterford.org

Feb. 1	Mon.	Mussar Cass	12:00 P.M.
Feb. 2	Tues.	Rabbi's Coffee House	9:00 A.M.
Feb. 3	Wed.	Adult Hebrew Translation Class	11:00 A.M.
Feb. 4	Thur.	Beginning Hebrew Class	12:00 P.M.
Feb. 5	Fri.	Lox Down Lunch with a Friend	12:00 P.M.
Feb. 5	Fri.	Family Tot Shabbat	6:45 P.M.
Feb. 5	Fri.	Family Tefillah Time	7:05 P.M.
Feb. 5	Fri.	Shabbat Service	7:30 P.M.
Feb. 6	Sat.	Havdalah	7:00 P.M.
Feb. 8	Mon.	Mussar Cass	12:00 P.M.
Feb. 8	Mon.	Sisterhood Book Club	7:00 P.M.
Feb. 9	Tues.	Rabbi's Coffee House	9:00 A.M.
Feb. 10	Wed.	Adult Hebrew Translation Class	11:00 A.M.
Feb. 10	Wed.	Temple Emanu-El Board of Trustees Meeting	7:30 P.M.
Feb. 11	Thur.	Beginning Hebrew Class	12:00 P.M.
Feb. 11	Thur.	Join Sisterhood and WRJ –Jewish Valentines Tour	12:00 P.M.
Feb. 12	Fri.	Lox Down Lunch with a Friend	12:00 P.M.
Feb. 12	Fri.	Shabbat Service	7:30 P.M.
Feb. 13	Sat.	Meditation, Prayer and Bible Study	10:00 A.M.
Feb. 13	Sat.	Havdalah	7:00 P.M.
Feb. 14	Sun.	Order Deadline for Mishloach Manot Bags/Fundraiser	
Feb. 15	Mon.	Mussar Class	12:00 P.M.
Feb. 16	Tues.	Rabbi's Coffee House	9:00 A.M.
Feb. 17	Wed.	Adult Hebrew Translation Class	11:00 A.M.
Feb. 18	Thur.	Beginning Hebrew Class	12:00 P.M.
Feb. 18	Fri.	Lox Down Lunch with a Friend	12:00 P.M.
Feb. 19	Fri.	Kabbalat Shabbat Service	7:30 P.M.
Feb. 20	Sat.	Shabbat Learners Service	10:00 A.M.
Feb. 20	Sat.	Havdalah	7:00 P.M.
Feb. 21	Sun.	Religious School Wide Purim Celebration	10:30 P.M.
Feb. 22	Mon.	Mussar Class	12:00 P.M.
Feb. 23	Tues.	Rabbi's Coffee House	9:00 A.M.
Feb. 24	Wed.	Adult Hebrew Translation Class	11:00 A.M.
Feb. 25	Thur.	Beginning Hebrew Class	12:00 P.M.
Feb. 25	Thur.	Help Out at the New London Meal Center contact Hali Keeler halirkeeler@gmail.com	
Feb. 25	Thur.	Community Purim Celebration	7:00 P.M.
Feb. 25	Fri.	Lox Down Lunch with a Friend	12:00 P.M.
Feb. 26	Fri.	Family Fun Friday	6:00 P.M.
Feb. 26	Fri.	Kabbalat Shabbat	7:30 P.M.
Feb. 27	Sat.	Havdalah	7:00 P.M.

We are eternally thankful for the support of those below. . .

Cantor's Fund

Abraham and Sandy Fisher

---mazel tov to our wonderful B'nai Mitzvah Class-

Claire Warren Thomas Smith, Irene Brickman Smith,

Marianne DeBruyn and Erik Brengman

Barbara Luftglass-Morea & Greg Morea

---in memory of Eleanor Grossman

Elwin Schwartz

---in loving memory of Ellen Schwartz on her yahrzeit

Martin and Joanna Lazarus

---in loving memory of Murray Lazarus on his yahrzeit

Patricia and Jay Hans

---in honor of the Adult B'nai Mitzvah Class

---in honor of Ethel Chatkin's Birthday

Essential Services Fund

Alvin and Patricia Sher

---in honor of Rabbi Polly Berg's new position

Armi and Jonathan Rowe

---in loving memory of Alita Sevilla on her yahrzeit

---in memory of Steve Weber's mom Judy Weber

---in memory of Barry Feldman's sister, Marsha
Sperling

Barbara and Jerry Kil

---in loving memory of Elizabeth Glenn on her yahrzeit

Barbara and Scott Wolfe

---in memory of Judy Weber

---in memory of Marsha Sperling

Bart Sayet and Lori Lindfors

---in memory of Marsha Sperling

---in memory of Judy Weber

---in memory of Irving Zion

Bob and Caren Linden

---in memory of Marsha Sperling

Donna and Andrew Goldman

---in memory of Judy Weber

---in memory of Irving Zion

Flossie and Michael Betten

---in honor of Cecile Feldman receiving the Howard
Ilson Award

Iris and Gary Freeman

---in honor of Cecile Feldman receiving the Howard
Ilson Award

---in memory of Marsha Sperling

---in memory of Judy Weber

Jane and Marvin Schnur

---in memory of Marsha Sperling

Joyce Goldberg

---in memory of Seymour Hendel

Karen Dinsfriend

---in memory of Judy Weber

Karen Dinsfriend

---in honor of Cecile Feldman receiving the Howard
Ilson Award

Kenn and Kim Fischburg

---in memory of Judy Weber

---in honor of the birth of Chloe Hazel Greenswann
granddaughter of Sandy Greenhouse & Jo-el
Fernandez

Leslie and Harvey Orenstein

---in honor of Cecile Feldman receiving the Howard
Ilson Award

---in memory of Marsha Sperling

Lois and Steve Panikoff

---in honor of Cecile Feldman receiving the Howard
Ilson Award

---in memory of Morris Kaplan on his yahrzeit

Martin and Joanna Lazarus

---in honor of Cecile Feldman receiving the Howard
Ilson Award

---in memory of Barry Feldman's sister, Marsha
Sperling

---in memory of the passing of Steve Weber's mother,
Judy Weber

Nathan and Shelley Weiss

---in honor of Cecile Feldman receiving the Howard
Ilson Award

Patricia and Jay Hans

---in memory of Judy Weber, mother of Steve Weber,
mother-in-law of Gail Weber

Paul and Andrea Kanfer

---in memory of Marsha Sperling

Isaaca Siegel Landscaping Fund

Abraham and Sandy Fisher

---condolences to Barry and Cecile Feldman and the
Feldman family on the loss of Barry's sister, Marsha
Sperling

CONTINUED ON PAGE 8

Please make checks payable to Temple Emanu-El and remit to PO Box 288, Waterford, CT 06385

Barry and Cecile Feldman
---in honor of the birth of Jacob Noah Roseman son
of Michael and Krystle Roseman
Flossie and Michael Betten
---in memory of Marsha Sperling; condolences to the
Feldman family
Karen Dinsfriend
---in memory of Marsha Sperling, sister of Barry
Feldman
Peter and Barbara Kallan
---in honor of Cecile Feldman receiving the Howard
Ilson Award
Rabbi Aaron and Karen Rosenberg
---in memory of Barry's sister, Marcia Sperling with our
deepest sympathy

Mitzvah Fund

Barry and Cecile Feldman
---in memory of Judy Weber, mother of Steve Weber
---in honor of the birth of Chloe Hazel Greenswann
granddaughter of Sandy Greenhouse & Jo-el
Fernandez
Flossie and Michael Betten
---in memory of Judy Weber; condolences to the
Weber family
Hali and Gerry Keeler
---with condolences to the Weber family on the
passing of Steve's mother, Judy Weber
Judy and Stephen Mann
---in memory of Judy Weber
---in memory of Marsha Sperling
Lois and Don Steinman
---in honor of Cecile Feldman receiving the Howard
Ilson Award
Michele and Harvey Snitkin
---in loving memory of Louis Snitkin on his yahrzeit
Patricia and Jay Hans
---in memory of Marsha Sperling, sister of Barry
Feldman, sister-in-law of Cecile Feldman
---in honor of Cecile Feldman receiving the Howard
Ilson Award

Prayer Book Fund

Anonymous
--- donating haggadot in memory of Ruth Dunkerley
Barbara and John Murphy
--- donating haggadot in memory of Judy Weber

---donating haggadot in memory of Irving Zion
Gail and Steve Weber
---donating haggadot in memory of Judith Weber,
mother of Steve Weber
---donating haggadot in memory of Irving Zion,
father of Gail Weber
Henry Dunkerley
---donating haggadot in memory of Ruth Dunkerley
Joan Levine
---in loving memory of Jules Levine on her yahrzeit
---in loving memory of Grace Wertheim on her yahr-
zeit

Rabbi Aaron Rosenberg Tikkun Olam Scholarship Fund

Alvin and Patricia Sher
---in memory of Libby Isaac
Matthew & Florence Lewiss
---in loving memory of Sylvia Lewiss on her yahrzeit
---in loving memory of Lillian Gertz Lewiss on her
yahrzeit
Rabbi Aaron and Karen Rosenberg
---in memory of Judy Weber

Rabbi's Discretionary Fund

Donald and Lois Steinman
---in loving memory of Judy Weber, mother of Steve
Weber
Jane and Chic Weinberg
---in loving memory of Al Weinberg on his yahrzeit
Judi Glickstein
---in memory of Marsha Sperling, Barry Feldman's sis-
ter
and Cecile's sister-in-law
---in memory of Judy Weber
Patricia Hendel
---in memory of Morris Thall on his yahrzeit
---in memory of Ray Cohen on his yahrzeit
Sybil Nassau, Miriam, Randy, Shanah, Lisa, and Randy

Ruth Joan Brody Religious School Fund

Leslie Spees and family
---in loving memory of Dorothy Segool on her yahrzeit



February Birthdays

Nicole Arruda
Harrison Howard Arruda
Spencer Bentley
Judith Deglin
Reuben Deglin
Jacob Feinstein
Barry Feldman
Noah Feldman
Abraham Fisher
Shayna Fox- Norwitz
Elsa Freedman
Allison Sue Glickman
Amy Golden
Andrew Goldman
Helen Goldstein
Jack Haynes

Autumn Hicks
Viviane Holwitt
Peter Kallan
Jillian Kallan
Jerry Kil
Barbara Kil
Philip Krasney
Keith Kriet
Rachel Kriet
Ben Lazarus
Harriet Lesko
Camden Levine
Jared Miah Linder
Regina Magnus-Aryitey
Lisa Marcus
Merrill Mazzella

Gregory Morea
Andrew Parad
Matthew Perl
Jacob Reinhard
Amanda Rowe
Mark Rubin
Ann Schwartz
Gregg Selke
Philip Shapiro
Milton Sheriff
Alisa Sheriff
Oliver Shiling
Tracy Shoor
Ira Sitko
Jessica Sitko
Leslie Spees

Elisha Stavropoulos
Pamela Stein
Joel Suisman
Barry Thorp
Robert Trostler
Nancy Trostler
Kenneth Webman
Henry Weinberg



February Anniversaries

*I found the one
my heart loves...*
Song of Songs 3:4

Daniel and Shelley
Arenson
Rachel and Michael
O'Brien
Aaron and Karen
Rosenberg
Milton and Alisa Sheriff
Donald and Lois Steinman



February 5

Helen Arbetter
Miriam Shoor Ballot
Frances Bloomfield
Joan Cherry
Ruth Fearer
Harold Goldman
Richard Grills
Gerhard Hausmann
Joseph Lewiss
Flora Nassau
Sheldon Schlissel
Clara Sibelman
Bessie Snitman
Sheba Lazev Stark
Henrietta Weber
Shelly Weinberg

February 12

Jennie Atkind
Larry Axmaker
Julia Barnett
Dorothy Benmaor
Helene Bloom
Merton Goldstein
David Hillsberg
Eleanor Katz
Pauline Mann
Lillian Miller

February Yahrzeits

Nathan Rubin
Norman Schnur
Leo Scharfman
Benjamin Sherman
Louis Shoor
Paul Wharton

February 19

Gerald Baker
Samuel Cohen
Philip Crystal
Larry Cushman
Ruth Dunkerley
Lou Freeman
Marilyn Freeman
Emanuel Luftglass
Albert Punty
Victor David Rosen
Fannie Schlissel
Harold Shapiro
Joseph Shepard
Helen Stein
Benjamin Stricker
William Surnamer
Phyllis Thall
Elizabeth Weber
John Zarcheck

February 26

Benjamin Angert
Irwin Braverman
Louis Brensilver
Rhoda Feinstein
Terri Goldsmith
Howard Helveston
Eva Isaacson
Carl Isaacson
Eva Kozek
Harold Margolis
Nathan Novar
William "Bill" Perry
Gail Piotrkowski
Charles Reisner
Norma Selwyn
Phyllis Weiss
Jack Zavatsky
Phyllis Zettler



Fundraising - Please note new deadline

Dear members,

The date for donating to purchase Mishloach Manot Purim bags has been extended to February 14 to enable you to have more time. Due to the rising costs, we upped the price to help with meeting our budget.

As you know, Purim is a time to celebrate our story of Esther. She was a hero to allow us to live during a time when the ruler Haman wanted us to die. Be Happy, make merry and celebrate with a mitzvah to our cause. There is so much joy in knowing that when you donate \$180 all Temple members will receive a Purim Mishloach Manot Bag with your name on it. If you are unable to do this, please then purchase at least one Bag at \$25. Remember that Purim is a Happy Holiday, so please exercise your right to be happy! Enjoy a Purim Bag and support our Temple. I hope you remember to contribute any amount for this time sensitive fundraiser no later than **February 14, 2021**. Donations in any amount are welcome. A donor list will be shared with the congregation.

Our Purim Mishloach Manot Bag itself is reusable and made of cloth sporting our name and Logo and will include items to enjoy such as candy, grogger, "Hamentaschen", a copy of the Story of Esther and

popcorn. Additionally, there will be a Fruit of the Loom heavy cotton Night-Shirt sporting our Temple Emanu-el logo with the saying "**Temple Emanu-el, 60 years and going strong**". No items will contain any nut products. Please email me deborahlinder29@gmail.com or call 860-877-4255 or email Roberta in the Temple office office@tewaterford.org or call 860-443-3005. We will happy to talk with you.

I will send an email out to volunteer drivers as to when the bags may be picked up for delivery.

At this time in our lives, my sincere hopes are to maintain inner peace and work within ourselves to maintain happy thoughts, enjoy peaceful music, and celebrate at Purim. Enjoy the Mishloach Manot bags and stay healthy.

Thank you for always caring about our Jewish Heritage, remembering the Story of Esther and exercising your right to do a mitzvah in the celebration of Purim.

L'Chaim.

Sincerely,

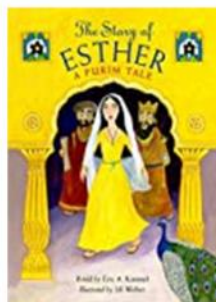
Deborah Linder

TE Fundraising Coordinator

Note new deadline for Purim Bags
Sunday, Feb. 14, 2021

See form on Page 11 to sign up!

It's Purim -- Be Happy!



FORM TO ORDER PURIM MISHLOACH MANOT BAG

TEMPLE EMANU-EL FUNDRAISER

Order by Sunday, February 14, 2021

NAME: _____

PHONE: _____

Donation Amount: \$180.00 to the entire congregation Please circle Yes or No

Donation Amount: One Bag at Costs \$25.00 per bag -Number of Bags: # _____

Name and Address to Deliver Your Own Bag and each extra Bag (deliveries to congregants only) :

Payment type: Check or Credit Card

Credit Card# _____

Expiration Date: _____ Security/CVV Code: _____

Paying by Check—in the memo write “Purim Fundraiser”

Options:

- 1) Use this order form:
 - a) mail to Temple Emanu-El P.O. Box 288 Waterford, CT 06385 or
 - b) e-mail to temanu-el@sbcglobal.net
- 2) Don't use the form and call Deborah Linder 860-877-4255 or e-mail the order information to deborahlinder29@gmail.com, and then send payment to the Temple.

Thank you for supporting Temple Emanu-El

In the Beit Midrash (House of Study) – 5781

Check the calendar on our website, www.tewaterford.org for links to classes and programs

Rabbi's Coffee House: Tuesdays, 9:00 A.M. – 10:00 A.M.

Each week stop into Rabbi Marc's virtual coffee house and talk about whatever is on your mind. You'll have to make your own coffee.

Mussar: Mondays, 12 P.M. to 1 P.M.

Each week through the 2nd week in June. This discussion session will be based upon The Mussar Torah Commentary edited by Rabbi Barry Block and selections from the classic Mussar text Messilat Yesharim. Study and conversation led by Rabbi Marc.

Adult Hebrew Translation Class with Sherry Barnes

Wednesdays, 11 A.M. to 12 P.M.

This class has been meeting for a while and is up to chapter 13 in their book, Prayer Book Hebrew The Easy Way by EKS Publishing. Our goal is to be able to translate prayers and maybe even some Torah.

Adult Beginning Hebrew Class with Sherry Barnes

Thursdays, 12:00 P.M. to 1:00 P.M.

This class is open to anyone wanting to learn how to read Hebrew. We will start with the Hebrew Aleph-Bet and vowels. Our goal is to be able to read prayers in our siddur, prayer book. If you already know Hebrew, but are a bit rusty, you are also welcome to join the class. Bring your lunch and come learn Hebrew!

Meditation, Prayer and Bible Study:

Saturday Mornings at 10 A.M. on the 2nd Saturday thru June

A 15 to 20 minute prayer and meditation session based upon liturgy and verse followed by a 40 to 45 minute conversation based upon the Torah and Haftarah reading of the week. When a bar or bat mitzvah coincides with the 2nd Saturday, expect a traditional Reform liturgy open to the entire Emanu-El community. Meditation and study co-lead by Rabbi Marc and Sherry Barnes.

Shabbat Morning Learners Service

Saturday Mornings at 10 A.M. on the 3rd Saturday thru April

Rabbi's Appointments

Something on your mind that you need help thinking through or just need to talk about? Concerned about something going on at the Temple or in the community? Or you'd just like to get to know one another. Rabbi Marc is available nearly every day, except Wednesdays for one-on-one, couples, or family meetings. Contact Rabbi Marc directly or schedule an appointment through Roberta in the Temple office.

Questions can be directed to Rabbi Marc at marcekstrand@gmail.com or Sherry Barnes at shirie3860@aol.com.

**Zoom links will be posted on our Temple Emanu-El calendar which you can find on our website
www.tewaterford.org.**

Gift Cards

The need to help those in crisis due to unexpected emergencies knows no season. Please consider donating Stop and Shop, Shop Rite, Big Y, Walmart or other gift cards for people in need. The Temple office receives calls for help purchasing food and other basic necessities throughout the year.



2020 Howard Ilson Memorial

Temple Emanu-El **Distinguished Service Award** Recipient

CECILE FELDMAN

Mazal tov!

2021 Howard Ilson Memorial -- Emanu-El Distinguished Service Award

Nominations are now being accepted for the **2021 Ilson Award**, which is given annually to a member who has contributed to Temple Emanu-El in an important way. The award is in honor of Howard Ilson, a former president of our Temple who died suddenly while in office.

Areas of service to consider include:

- ~ Years of service as an officer or Board member
- ~ Years as a committee chairperson
- ~ Years of service in auxiliaries such as the Religious School, Sisterhood, Brotherhood
- ~ Years of community service as a representative of Temple Emanu-El
- ~ Years of time and energy expended for the betterment of Temple Emanu-El

Nominations will be accepted until March 1. The award committee will then review the nominations, and the winner will be announced in the Temple *Bulletin*. The award winner will be honored at a Shabbat service, and his or her name will be engraved on a plaque on display in the Temple.

Please take the time to consider a worthy nominee. It is one way of thanking our members for volunteerism that often goes unnoticed. If you wish to nominate someone, please fill out the form and mail or e-mail. All nominations will be strictly confidential.

Howard Ilson Award Nomination Form

Name of person being nominated: _____

Name of nominator: _____

Summary of nominee's attributes and service to Temple Emanu-El

(Must be completed for nominee's consideration);

Please use space below or a separate piece of paper to complete and send to
Temple Emanu-El, P.O. Box 288 Waterford, CT 06385 or office@tewaterford.org.



**RE/MAX[®]
ON THE BAY**

**FOR ALL YOUR
REAL ESTATE NEEDS**

Direct: 860-443-4400 Cell: 860-625-5255
Email: Geoff@CallTheHouseMan.com
Website: www.CallTheHouseman.com
Blog: CTHouseMan.com

THE City NEVER SLEEPS!

MYWHALINGCITY.COM • OPEN 24/7
BROAD & COLMAN ST, NEW LONDON • 860.443.8361

MY WHALING City

860-443-CITY (2487)

PsychologyCT.com

Schaperow Psychology & Associates:
Thorough diagnostic assessments; psychological testing; individual, marital, & family therapy.

Drug & Alcohol Treatment:
Clinicians that specialize in drug & alcohol treatment.

And:
Cognitive Behavioral Therapy (CBT) Center:
Evidence-based CBT to improve mental health, and decrease stress for certain physical illnesses.
860-447-2047 / PsychologyCenterOffice@gmail.com

**NEW LONDON
SELF-STORAGE**

CLIMATE CONTROLLED

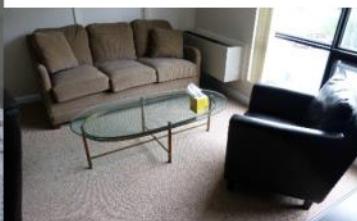
860-442-0008

www.NLSelfStorage.com

*Conveniently Located Just Over
the Waterford Town Line
at 960 Bank St., N.L. behind Sign "A" Rama*

- Brand New, Clean Facility
- 24/7 Video Surveillance
- Secure Gate with Keypad Entry
- Month to Month Rentals
- Free "We'll Pick It Up" Service
- Locally Owned & Managed
- 200+ Units - 6 Sizes, up to 10'4" ht.
- Climate Controlled Automobile Bays
- Boxes, Locks, Packing Supplies

Psychology CT LLC is **seeking renters**, as we have **beautiful offices available** in Waterford. These offices are perfect for professionals (e.g., therapists, massage therapists, small practice attorneys & accountants, certain kinds of physicians, etc.), especially those that don't need a reception area, but may still benefit from a waiting area. Please see <https://sites.google.com/site/schaperowpsychology/office> for details, or email psychologycenteroffice@gmail.com for more information. PsychologyCT.com



TEMPLE EMANU-EL
PO BOX 288
WATERFORD, CT 06385

Please use PO BOX 288 WATERFORD, CT 06385
when mailing material to the temple

Non-Profit
Organization
U.S. Postage PAID
New London, CT
06320
Permit #480

Deadline for March 2021 Bulletin is Friday, Feb. 12

Email your articles to Roberta at office@tewaterford.org

CHANGE SERVICE REQUESTED

Our Leadership

Rabbi / Marc Ekstrand / rabbi@tewaterford.org
Rabbi Emeritus / Aaron Rosenberg / arloveskr@aol.com
Cantorial Soloist / Sherry Barnes /
cantorialsoloist@tewaterford.org
President / Jo-el Fernandez / president@tewaterford.org
1st Vice President / Andy Parad
VP of Building and Grounds / Russell Sheikowitz /
buildingsgrounds@tewaterford.org
VP of Religious Practices / Jo Michaelson
Treasurer / Thomas Smith / treasurer@tewaterford.org
Financial Secretary / Bruce Goldstein
Recording Secretary / Marcia Reinhard
Corresponding Secretary / Deborah Linder
Immediate Past President / Sean Bendick
pastpresident@tewaterford.org
3 Year Trustees: Robbin Alpert, Susan Cramer, Allison Glickman,
Amy Perry
2 Year Trustees: John Murphy, Irene Brickman Smith, Gail We-
ber, Scott Wolfe
1 Year Trustees: Paul Kanfer, Steve Panikoff, Edee Smith

Membership Co-Chairs / Allison Glickman & Erica McCaffrey

Social Action Chair / Marty Zeldis

Sisterhood / Merrill Mazzella & Gail Weber /

sisterhood@tewaterford.org

Gift Shop / Susan Hausmann / judaicashop@tewaterford.org

Brotherhood / Scott Zettler / brotherhood@tewaterford.org

Kitchen Committee Chair / Edee Smith

Religious School Administrators / Armi Rowe &

Jennifer Zettler / religiousschool@tewaterford.org

Office Administrator / Roberta Reisner-Winograd /

office@tewaterford.org

Webmaster / Aaron Kaplan / webmaster2@tewaterford.org

Custodian / Don Kasper

Bulletin Editor / Mimi Perl

Location: 29 Dayton Road, Waterford, CT 06385

Mailing Address: PO Box 288, Waterford, CT 06385

Office: **860-443-3005**

Religious School: **860-439-0406**

Website: www.tewaterford.org