



Rabbi's Message - Marc Ekstrand

Friends,

This time last year, the pandemic was beginning to blossom. By Passover, we were all at home, and the suffering was beginning. Who could

have imagined all that we have endured? Now, some of us have received our vaccinations; others are waiting their turn. The end of this pandemic may be months away, but the light is visible at the end of the tunnel.

This year, we'll need to have our second Zeder, that is, a Zoom Seder. In the coming weeks, we'll be planning this online event. We'll be using parts of the new Haggadah, Mishkan Haseder, published by the Central Conference of American Rabbis. This new Haggadah will replace the Baskin Haggadah, so-called because of the watercolor artwork by Leonard Baskin. The Baskin Haggadah was first published in 1974 and is the only Haggadah I remember from my childhood. Each year it would appear on the dining room table. Guests changed year to year, but Baskin was always there, along with a few crumbs from the year before. But now it is time to continue our journey with a new Haggadah.

Mishkan Haseder will feel familiar to you. Our siddur, Mishkan T'filah, set the standard for pairing contemporary poetry with our ancient liturgy. Our Reform movement has embraced this paradigm because it strikes balance between *keva* and *kavannah*, tradition and intention. Just as ancient liturgy provides support with its foundational rigidity, while the openness and expressiveness of contemporary poetry provides a catalyst for our prayers of the heart. Executive Editor Rabbi Hara Person notes in her introduction to Mishkan Haseder, "For many years I dreamed of creating a Haggadah that would be rich and engaging for those with a strong Jewish background, inviting and open to those with little or no background, and welcoming to

those not sure they should even be around the table—a Haggadah that would be beautiful and complex, that would allow us to challenge and be challenged, that connects the story of the Exodus with our personal stories, that would be authentic while recognizing the range of identities and backgrounds gathered around our tables."

Just like its predecessor, Mishkan Haseder engages us visually with beautiful artwork. Tobi Kahn has focused much of his life on creating miniature sacred spaces. Our new Haggadah combines his artwork with our ancient liturgy, contemporary poetry, and commentary to give us some of the critical building materials necessary to transform our homes into a *mikdash mi'at*, a little sanctuary. All we need now is to set our tables and add our own authentic story.

As we approach this Passover, let's consider the journey we are on now. Throughout the past year, we've endured many plagues: isolation, loneliness, anxiety, masks, dry hands, hidden faces, muffled voices, zoom rooms, hybrid schools, social unrest, political turmoil, and an astounding number of dead. As we put drops of wine or grape juice on our plates this year to recognize the biblical plagues, what contemporary plagues will also be in your thoughts? What has been oppressing you? Where will you find redemption? What does freedom taste like? Take some time to consider these questions and ask more of your own. Share your plagues list, write a poem, or tell of your experience in a short narrative. Email them to me at marcekstrand@gmail.com, and we'll bring them into our Passover Zeder.

L'shalom,

Rabbi Marc



President's Message



The calendar has come full circle. This month marks one year since we have been able to gather in person in our synagogue. One year since I have set foot in my former office of 200 people in an old building with an antiquated HVAC system in Norwich.

One year since we have been able to travel, have dinner with friends, or go to concerts and plays. And yet, we have hope. Spring is coming again. I have learned that I can do my job just as effectively and more efficiently from home, which even included transitioning into a new position last spring. The vaccines are here and are proving to be very effective. As I write this, our positivity rate is hovering around 2%—significantly better than we were one short month ago. Hospitalizations continue to decrease. and Connecticut was the 1st state in the country to get nursing home staff and residents fully vaccinated. As a result, in a little over a month, cases among nursing home residents statewide have gone from 483 down to 30! And currently, those ages 65 and up are eligible to be vaccinated, and by the time you are reading this, front line essential workers and younger adults with serious health conditions should also be eligible.

What does all of this mean? The Temple Emanu-El COVID-19 Task Force/Re-Entry Committee continues to meet on a regular basis and to utilize science first, and then Jewish values, as the basis for all decision making. Thankfully, Jewish values are highly compatible with science, so there has been no cognitive dissonance with regard to preserving life as the highest value. During our last meeting, we focused on the prioritization of the operations that are most critical to restore first (in-person Religious School, in-person life cycle events, and Shabbat services, starting with outdoor services when the weather is conducive). We also had discussion regarding which operations we can most safely resume first (outdoor services, small youth group events, and small life cycle events), and which operations are the most difficult to replicate virtually (visiting the sick, spiritual counseling, cabaret and other fundraisers, social events, and Religious School). Our next meeting will be focused on developing very specific guidelines in order to safely hold

small life cycle events consisting of immediate family and clergy in the synagogue for the upcoming b'nei mitzvot in the spring.

With regard to the Community Campus initiative, the committee is working on final revisions to a vision statement that will emphasize the inclusive nature of a campus. Meanwhile, the architect is working on a rendering that will display an option for the design and footprint of the structure. The committee will be hiring an accountant with experience in this area to help determine a plan for the financial and organizational structure of the campus that is fair to all three entities involved. Once a plan is developed, a congregational meeting will be held for discussion and approval of the project. Stay tuned for more information over the upcoming months, and please contact myself or Gail Weber, the Community Campus committee chairperson, with any questions or comments.

In Temple board business, I am pleased to report that Temple Emanu-El was approved for the 2nd draw Payroll Protection Plan loan from the Small Business Administration, which is immensely helpful in filling some of the holes in our budget caused by the financial impact of the pandemic and loss of our usual fundraising activities. If you have been less financially impacted during this time than others, please consider increasing your contributions to our Temple in order to sustain our crucial operations. I would also like to welcome Temple Emanu-El's newest board trustee! Michael Barnett has filled a current vacancy and is interested in continuing to serve on the board next year. Michael is a relatively new member of Temple Emanu-El, as he relocated from South Windsor to Niantic. He was an active member of a Reform congregation there and served on their board for a number of years. Michael is also an active Rotary club member and brings a wealth of experience and community involvement to our board. Welcome, Michael. We are lucky to have you! If you are interested in serving on the Temple Emanu-El board next year, please contact nominating committee chairperson Andy Parad.

Be happy, it's Adar! And please get your vaccines when it's your turn!

Jo-el Fernandez

Notes from Sherry Barnes



Chag Pesach sameach! I looked at the matzah while shopping in the grocery store and smiled when I realized that I still have two boxes from last year! Passover was one of the holidays my family celebrated as I was growing up. I'd help my mom with the cooking and setting the table. It was always a home celebration with matzah balls in the chicken soup, (unless I served my dad the matzah balls with the water they were boiled in), jarred gefilte fish, vegetables, and tzimmes. We used the Maxwell House Haggadah and my dad led a beautiful seder. The prize for finding the afikoman was usually a large chocolate covered creamy coconut Easter Egg. That memory still makes me laugh. My brother and I took our matzah sandwiches to school for lunch. They were very messy and always got funny looks from any kid sitting at our lunch table. Their looks were usually followed by the question, "What is that?". Then I'd have to tell them the story of Passover. When we joined Temple Emanu-El, we started attending Passover Seders with our T.E. family. In fact, the first time I met Barbara Bentley Wolfe was at one of those seders! Sitting with the Goldsmith family for the seder was always a highlight for me. Our boys would crack jokes and see who could hang a spoon off their nose. To be honest, the adults tried it too. We would giggle our way through the Haggadah and enjoy each other's company. Sharing Passover with such special friends was such a blessing. Memories that still make me smile and laugh out loud as tears remind me that March 3, will be two years since Terri left us. She did such creative things for Passover, like the Peep Passover Seder that she made with Amanda Rowe. She loved Peep art. Can't pass a Peep without thinking about her. Her memory is always a blessing. There were years that we were blessed to spend second seder with the Rosenberg's, their family and extended family. Those were also fun seders with great memories, many good laughs, and delicious food. I've also taken part in seders with the Feinstein family and friends. Andy's yearly creative Haggadah, with a part for everyone, is always based on current issues, infused with humor, music, and fun, all while telling the story of Pesach. I'm always in awe of his creativity. Speaking of the Hagga-

dah, I'm looking forward to using our new Haggadah, Mishkan HaSeder. My copy has arrived, and I've enjoyed flipping through it. The pages are smooth and clean, waiting for their first drop of wine and matzah crumbs to add character. There's new poetry and colorful illustrations that are beautiful. I'm sure you will find it inviting. I'm looking forward to sharing Pesach with you and your family at our Temple Emanu-El seder on Zoom. I'm hoping this will be our last year solely on Zoom and that next year we will be done with the virus and able to be together in person once again. Have a sweet and healthy Passover!

A couple of things going on at Temple Emanu-El that I'd like to remind you about.

Every Friday in March, you will have a special opportunity to nourish your tummy with lunch, while Harvey Snitkin nourishes your soul with music. Please join us Fridays at 12:00 for an hour of munching and music.

Saturdays at 7:00 p.m., we join together to say goodbye to Shabbat with our havdalah service and welcome in the new week with some fun. Barbara Senges has come up with some great trivia questions, questions to solve, and **the end of the month we have Cabaret.** Barbara Senges has been great helping to create this program. Many thanks to her. If you are interested in being a part of Cabaret, please contact me. I'd love to have you in the lineup.

B'shir,

Sherry



Temple Emanu-El Religious School (TERS)

It was once again a joy to gather with our religious school families during the First Friday Family Shabbat of 2021 on Friday, February 5. **We hope to see you all again at our next First Friday Family Shabbat on Friday, March 5, 2021 at 6:45 p.m.** Tot Shabbat is at 6:45 P.M. and Tefillah Time is at 7:05 P.M. Stay on for regular Shabbat service beginning at 7:30 P.M.

On Sunday, February 21, in lieu of regular class lessons, we hosted one schoolwide zoom event from 10:00-11:00 am for our Purim Celebration. Our students participated in our traditional costume contest (categories: most creative, most colorful, most original and best Purim-themed). The children also competed in a grogger contest (categories: loudest, most obnoxious, and most creative). We awarded prizes to our costume and grogger contest winners which were mailed. Special thanks to our Kitah Vav and Kitah Zayin students who led the Dr. Seuss version of the Megillah reading. We also enjoyed our hamantaschen bake-a-long on our Fun Family Friday event on February 26. What fun to see everyone smiling, rolling out dough, filling their hamantaschen dough with jelly and then baking them. We enjoy our casual chats as we do fun activities together.

This month on March 7, March 14, and again on April 4, Kitah Gimmel through Kitah Zayin will each enjoy one special Hebrew program with Hadar Elya, one of our former Young Israeli Emissaries. Thanks to JFEC Assistant Director Marcia Reinhard for coordinating, Hadar



will visit our students, live from Israel. She will visit the classes in March/April to share a fun game that teaches some modern Hebrew words.

Join us for a Passover-themed "Parting Sea" virtual painting activity on our Fun Family Friday on Friday, March 19 at 6:00 P.M. Together, we will learn simple techniques for creating a beautiful painting depicting this significant time in the story of Exodus. We will paint together "a la

Bob Ross" tutorial (the virtual instructor is not Bob but he's Jewish :) We will distribute a small 8x10 canvas for each student that RSVPs ahead of time through Passover Holiday bags we will deliver to each family beforehand. Families will need to provide their own acrylic paint and brushes at home. More information to follow.

Please also save the date for our school-wide Passover seder events on Sunday, March 21. At 9:30 A.M. Kitah Gan, Kitah Alef A and B will have their *Sammy the Spider* Passover Seder. At 10:45 A.M, Kitah Gimmel through Kitah Zayin will sit together virtually for their Passover Seder-in-Song.

There will not be religious school on Sunday, March 28 in observance of Passover.

Chag Pesach Sameach,

Armi and Jennifer

Sisterhood -- Merrill Mazzella & Gail Weber, Co-Presidents

Hi Ladies,

Almost "Happy Spring!" How wonderful it will be when we can see our friends outside as the weather starts to get warmer. It's funny how our perspective has changed, and we have re-aligned our values and re-prioritized those things that are and are not important.

Sisterhood has worked hard to keep a sense of community during these months when we could not be together in person. We have learned what does and does not work virtually and always feel happy when we get to see our friends on our screens.

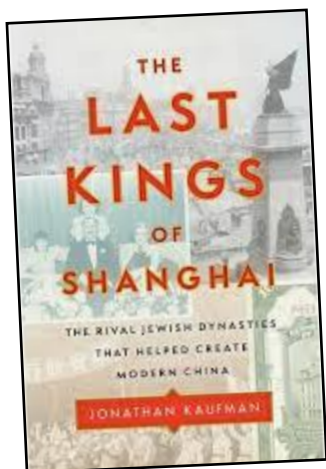
By the time you read this, we will have had two very successful Trivia nights. A special thank you goes out to Barbara Senges for selecting great questions and organizing the event. Stay tuned for future Trivia dates.

On **Thursday, March 18 at 7:00PM**, we will be having a **"Scavenger Hunt"** on Zoom. From the comfort of your home, you'll be challenged to find items and bring them back to your computer for all to see. Prizes will be awarded. It will be different and definitely a lot of fun!

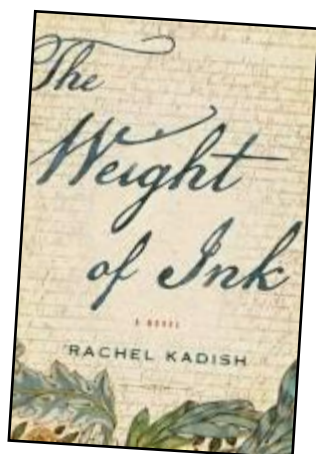
CONTINUED ON PAGE 5

Sisterhood -- continued from page 4

We will be meeting to discuss our next **Book Club** selection "**The Last King of Shanghai**" by **Jonathan Kaufman** on **Wednesday, April 7 at 7:00PM**.



Looking ahead, the book we will be reading after that is



"**The Weight of Ink**" by **Rachel Kadish**. We'll meet on Zoom to discuss this book on **Tuesday, May 11 at 7:00 PM**.

On **Sunday, April 11 at 2:00PM**, Hadassah will present Professor Laurence Tribe of Harvard University, a survivor of a Jewish family in Shanghai, to speak about refugees who fled to Shanghai during the period of WWII and the Holocaust. All are welcome to join this virtual Hadassah program. (While Professor Tribe will not be discussing the book directly, his talk will tie in nicely with our Book Club selection "**The Last King of Shanghai**.")

It has become a tradition for **Sisterhood to lead the Friday night service** of Mother's Day weekend. We will continue the tradition this year. Mark your calendars for **Friday May 7 at 7:30PM**. More info to follow.

Lastly, the Women of Reform Judaism have a wonderful conference each year. This year, of course, it is virtual which is actually good for us as we won't have to fly anywhere yet can still participate! This is the perfect opportunity to hear fascinating women speak (including a speechwriter of President Obama's) and

participate in inspiring services. The dates are **March 12-14**. You can take part in some, or all, of the events. The cost is \$54. Please check out their website: **WRJ Fried Virtual Women's Conference** for additional information.

As always, if you have suggestions for future programs, please let us know.

We miss you all and look forward to seeing you soon.

Best,

Merrill & Gail

Temple Emanu-El Gift Shop



It is truly incredible that it has been nearly a year since we have all been together. I really miss seeing so many of our congregants. Hopefully we will be reunited in the near future. Until then the Judaica Shop is still

open through our website. I have been fortunate to see a lot of you during our parking lot pickups.

During the month of March, the website will be featuring Passover items. There is a nice selection of Seder plates, Matzah covers, Haggadahs and many other items.

While creating the website I discovered many of the common shopping sites carry some of the very same items. I also discovered that in many cases their prices are significantly higher than we are. Please consider comparison shopping.

You can contact me at Judaicashop@tewaterford.org.

Susan Hausmann

Condolences to . . .

Adam and Mary Seidner and family

on the passing of Adam's father,

Richard Seidner

Events & Service Schedule

Zoom Links can be found on the Temple Website Calendar for events and services.

www.tewaterford.org

March 1	Mon. Mussar Cass	12:00 P.M.
March 2	Tues. Rabbi's Coffee House	9:00 A.M.
March 3	Wed. Adult Hebrew Translation Class	11:00 A.M.
March 4	Thur. Beginning Hebrew Class	12:00 P.M.
March 5	Fri. Family Tot Shabbat	6:45 P.M.
March 5	Fri. Family Tefillah Time	7:05 P.M.
March 5	Fri. Shabbat Service	7:30 P.M.
March 6	Sat. Havdalah	7:00 P.M.
March 8	Mon. Mussar Cass	12:00 P.M.
March 9	Tues. Rabbi's Coffee House	9:00 A.M.
March 10	Wed. Adult Hebrew Translation Class	11:00 A.M.
March 10	Wed. Temple Emanu-El Board of Trustees Meeting	7:30 P.M.
March 11	Thur. Beginning Hebrew Class	12:00 P.M.
March 11	Thur. Join Sisterhood and WRJ –Jewish Valentines Tour	12:00 P.M.
March 12	Fri. Shabbat Service	7:30 P.M.
March 13	Sat. Meditation, Prayer and Bible Study	10:00 A.M.
March 13	Sat. Havdalah	7:00 P.M.
March 15	Mon. Mussar Class	12:00 P.M.
March 16	Tues. Rabbi's Coffee House	9:00 A.M.
March 17	Wed. Adult Hebrew Translation Class	11:00 A.M.
March 18	Thur. Beginning Hebrew Class	12:00 P.M.
March 18	Thur. Sisterhood Scavenger Hunt	7:00 P.M.
March 19	Fri. Family Fun Friday	6:00 P.M.
March 19	Fri. Kabbalat Shabbat Service	7:30 P.M.
March 20	Sat. Shabbat Learners Service	10:00 A.M.
March 20	Sat. Havdalah	7:00 P.M.
March 22	Mon. Mussar Class	12:00 P.M.
March 23	Tues. Rabbi's Coffee House	9:00 A.M.
March 24	Wed. Adult Hebrew Translation Class	11:00 A.M.
March 25	Thur. Beginning Hebrew Class	12:00 P.M.
March 26	Fri. Kabbalat Shabbat	7:30 P.M.
March 27	Sat. 1 st Passover Seder	6:00 P.M.
March 28	Sun. 2 nd Passover Seder	

We are eternally thankful for the support of those below. . .

Alter Fund

Barbara Quaratella

--in loving memory of Ruth Fearer on her yahrzeit

Building Fund

Henry Dunkerley

--in loving memory of Ruth Dunkerley on her yahrzeit

Michael and Linda Barnett

--in memory of Julia Barnett on her yahrzeit

Cantor's Fund

Elsa Freedman

--in honor of my friend Ethel Chatkin's birthday

--in honor of my friend Abraham Fisher's "special birthday"

Henry Dunkerley

--in loving memory of Ruth Dunkerley on her yahrzeit

Essential Services Fund

Corinne and David Weber

--in honor of Abe Fisher on his 90th birthday

Henry Dunkerley

--in loving memory of Ruth Dunkerley on her yahrzeit

Jane and Marvin Schnur

--in loving memory of Norman Schnur on his yahrzeit

Lois and Don Steinman

--for Stan Bloustine - hope you are back on your feet real soon

Martin and Joanna Lazarus

--in honor of Jason Orenstein becoming engaged to Rebecca Wolff

Martin and Joanna Lazarus

--in loving memory of David Hillsberg on his yahrzeit

--in loving memory of Dorothy Benmaor on her yahrzeit

--in loving memory of Lillian Miller on her yahrzeit

Melissa Rubinsky

--in loving memory of my mother, Jean Rubinsky, who would have celebrated her 100th birthday on March 23

Minerva Beard

--in loving memory of Jody Katz

--in loving memory of Alicia Bauer

Shelley Weiss

--in loving memory of my father, Merton Goldstein on his yahrzeit

Suzy Lamson

--in loving memory of Shelly Weinberg on her yahrzeit

Isaaca Siegel Landscaping Fund

Elsa Freedman

--in loving memory of my wonderful Paul Wharton on his yahrzeit

--in loving memory of my wonderful sister Sheila Wasserman on her yahrzeit

Kitchen Fund

Henry Dunkerley

--in loving memory of Ruth Dunkerley on her yahrzeit

Mitzvah Fund

Abraham and Sandy Fisher

--in memory of Andy Polak

Elsa Freedman

--mazel tov to Claudia and Lester Shapiro on celebrating their 60th anniversary

--get well wishes to Irene Brickman Smith... thinking of you

Gail and Steve Weber

--in memory of Harry Weber on his yahrzeit

--in honor of the Adult B'nai Mitzvah Class: Marianne

DeBruyn, Erik Brengman, Irene Brickman Smith, Thomas Smith, and Claire Warren - Mazel Tov!

--in memory of Barry Feldman's sister, Marsha Sperling

--in honor of the birth of Patty and Jay Hans' grandson, Barrett Taylor Hans

Hali and Gerry Keeler

--in honor of Cecile Feldman receiving the Howard Ilson Award

--in honor of the Adult B'nai Mitzvah Class

Phil and Vicki Stein

--in loving memory of Sheldon Schlissel on his yahrzeit

--in loving memory of Louis Schlissel on his yahrzeit

--in loving memory of Fannie Schlissel on her yahrzeit

--in loving memory of Samuel Cohen on his yahrzeit

--in loving memory of Harold Stein on his yahrzeit

--in loving memory of Helen Stein on her yahrzeit

Schneider Family

--in loving memory of Larry Schneider on his yahrzeit

--in loving memory of Lanny Glasgow on his yahrzeit

--in loving memory of Bernard Glasgow on his yahrzeit

--in loving memory of Dorothy Glasgow on her yahrzeit

--in loving memory of Pearl Glasgow on her yahrzeit

--in loving memory of Paul Glasgow on his yahrzeit

Rabbi Aaron Rosenberg Tikkun Olam Scholarship Fund

Edith Ziegler

--in loving memory of Sigmund Sol Rosenholtz on his yahrzeit

CONTINUED ON PAGE 8

Please make checks payable to Temple Emanu-El and remit to PO Box 288, Waterford, CT 06385

We are eternally thankful for the support of those below. . . Continued from page 7

Jane and Marvin Schnur

--- in memory of Ellen Shepherd McKinney

Matthew and Florence Lewiss

--- in loving memory of Joseph Lewiss on his yahrzeit

Rabbi's Discretionary Fund

Barry and Stephanie Thorp

--- in loving memory of Philip Crystal on his yahrzeit

Ethel Chatkin

--- in loving memory of Norma Selwyn on her yahrzeit

Irma Flitt

--- in loving memory of Bessie Snitman on her yahrzeit



SOCIAL ACTION

IS THE END OF THE TUNNEL AND ITS LIGHT NEAR?

As I write this in the middle of February, the high hopes regarding the corona virus are finally materializing. New cases are down, deaths and hospitalizations are down as well. Although some who know more than we do say that the worst is still to come, the prayer is for them to be wrong. After confusion at the start, Connecticut finally is getting life-saving vaccinations into the arms of those presently eligible. Stating the obvious, it is important that all of us get vaccinated as soon as possible.

The plan at this moment is to have a Social Action Committee meeting on Sunday, March 14. While it is in the realm of dreaming, it would be wonderful to have an in-person meeting, but March 14 is only a few weeks away and our meeting will be by Zoom. Details of the meeting will be announced in the first week of March. In the meantime, a Social Action project that can start now and be formalized at our March meeting is that we can be available, at least to all Temple members (and maybe beyond) to **assist those looking to be vaccinated**. Getting an appointment for vaccination and then being vaccinated remains a confusing and difficult process. First you need to be eligible. Then you need to make an appointment. And then you need to get to the appointment. We should make Social Action available to help people go through this very difficult process. Since most of those eligible for vaccination at present are elderly or infirm and since getting vaccinated often involves traveling a substantial distance, providing help can make the difference between getting vaccinated and not getting vaccinated. If you need such help or want to assist others regarding vaccina-

tions, please contact Roberta or the Rabbi at the Temple Office (860-443-3005) or Marty Zeldis (chair of the Social Action Committee 860-4424580) We will try to fully organize this effort at the March 14 meeting.

On other matters:

- The New London Soup Kitchen continues to provide meals to those in need on the third Tuesday of each month Temple members are responsible for preparing and distributing dinner. Contact member Hali Keeler if you wish to become involved.
- The Homeless Hospitality Center is in the process of transitioning a number of residents into apartments of their own. For this to happen there is a need for many items that will allow the apartments to become homes. If interested in contributing or helping, please contact Judy Mann (860 536-4784).
- Finally, now that Habitat for Humanity is resuming work on their Building sites, Social Action is trying to return to monthly Sunday Builds. It is hoped that we can arrange for a Sunday Build some time before the end of March.

It is important to keep up our respective guards. It is important to remain vigilant. But it is also important to be Optimistic. The best is yet to come and Social Action should be there. "All problems are just a toy balloon, they'll be bursting soon, they're just bound to go pop. Oops there goes another problem Kerplop" (courtesy Frank Sinatra).

Marty Zeldis

March Birthdays

Jeffrey Arenson
Doug Barnes
Minerva Beard
Jennifer Beatty
Anne Bendick
Jordan Bentley
Stanley A. Bloustine
Steven Carlow
Tracy Colsen Schaperow
Susan D. Cramer
April D'Amato
Debra Eichler Elliott
Dr. Burton Gischner
Ruth Gluck
Lawrence Goldman

Susan Goldman
Susan Goldstein
Ellen Gottfried
Geoff Hausmann
Rebecca Haynes
Spencer Haynes
Joel Holwitt
Alexandra Holwitt
Joshua Johnson
Regan Kaye
Martin Lazarus
Joan Levine
Kaylyn Levine
Jeremy Linden
Todd Linden

Erica McCaffrey
Ryan Novick
Lois Panikoff
Chris Rock
Ellen Schiller
Paige Schneider
Lindsay Schneider
Stephanie Seeman
David Senges-Murphy
Nancy Siegel
John Silsby
Harvey Snitkin
John Stavropoulos
Amy Stricker
Sheldon Stricker

Stephanie Thorp
Margaret Trehub
Lauren Trostler
Caroline C. Walz
Gail Weber
Shoshanna Weiss
Hannah Winograd



March

Anniversaries

*I found the one
my heart loves...*
Song of Songs 3:4

Stuart and Marilyn
Fishbone

Andrew and Donna
Goldman

Jeffrey P. Elkin and
Jean Lasser

Mark and Dianne Rubin



March 5

Joseph Bloustine
Audrey Cohen
Howard Franklin
Iona Fridman
Ruth Lasser
Alex Lazarus
Miriam Massman
Waldo Larry Miner
Irwin Sayet
Dr. Samuel David Schupack
Marian Senges
Walter Senges
Leon Speevak
Priscilla Young

March 12

Gordon Adams
Ruth Doukas
Harry Eidensohn
Morse Engelman
Charlotte Fox
Larry Freeman
Fuzzy Gipstein
Esther Goodstein
Sarah N. Herbert
Sadie Lazev
Burton Miller
Selma Misch
Charles Reisner
Mary Schnader
Joseph Shapiro

March Yahrzeits

John Shiers
Donald Shulman
Bernard Simon
Harold Stein
Louis Trostler
Melvin Zablotsky
Louis Zeldis
Sylvia Zeldis

March 19

Michael Bloom
Scott Bloom
Sheppard Fox
Nathan Goodman
Charles Gregory
Bethany Hillsberg
Risa Hillsberg
Nathan Hytone
Ruth Kilbey
Samuel Liebowitz
Benjamin Linden
George Mettler
Stella Murphy
Ray Brooks Prokesch
Irving Ressler
Marvin Rovner
Louis Schlissel
Stanley Sedransk
Anne Steinman
Rose Pearlman Tulman

March 26

Suzanne Bloom

Bessie Brody
Katherine Buckstein
Joseph Fernandez
Miriam Miaz Fridman
Philip Goldblatt
Henry Green
Howard Greenhouse
Josephine Hovey
Harvey Krasney
Benjamin Lazev
Sheldon Levine
William "Bill" Mandelbaum
George Mikulka
Gloria Miller
Cookie Parry
Janice Reisner
Florence Rosenstein
Jerome Schwartz
Florence Shafner
Frieda Shapiro
Rose Shedroff
Mary Shleffar
Marlene Simon
Abraham Sisisky
Sol Solomon
Harry Stoner
Mary Temple
Bennett Werner
Deeda Wharton
Corrinne Willins

Fundraising - Purim Mishloach Manot Bags 2021 -- Thank you!

Congregants,

Purim this year was unique due to Covid-19 Pandemic making it impossible to work together and celebrate so that we are grateful for the available support shown all the same with our members and businesses in the local community. When you read this, some more people may have contributed who were not on this list. You will be mentioned in the next edition of the Bulletin. Enjoying, candy, popcorn, grogger, story of Esther, and especially Hamantaschen are all part of our celebration and it is a joy that everyone in our congregation was able to receive a bag thanks to a lot of people including our volunteers who delivered bags. They will be mentioned in the next edition.

Because of this support, everyone in our congregation was provided a wonderful Anniversary version Purim Mishloach Manot Bag.

If you did not realize it, Sherry Barnes is being honored for her 20 years of service this summer and we included a logo and saying on both our reusable Tote Bag and Night Shirt

“20 years and going strong” to show her our appreciation. “May she continue to sing for us strong another 20 years”!

Again, our heartfelt thanks and appreciation to the following who provided donations to our Purim Mishloach Manot Bags in honor of our 60th Anniversary and 20th Anniversary of our Cantor Sherry Barnes:

- Robbin and Brian Alpert
- Cantorial Soloist Sherry Barnes
- Michael and Linda Barnett
- Minerva Beard
- Jennifer Beatty
- The Bendick Family
- Flossie and Mike Betten
- Stan and Karen Bloustine
- Stuart and Judi Deglin
- Karen Dinsfriend
- Golda Doyle and David Blustein
- Henry Dunkerley
- Rabbi Marc Ekstrand and Rabbi Polly Berg & family
- Kim and Kenn Fischburg
- Stuart and Marilyn Fishbone
- The Fornara Family



- Elsa Freedman
- Iris and Gary Freeman
- Bruce and Lori Goldstein
- The Kallan Family
- Hali and Gerry Keeler
- Lisa Gilbert and Rich King Family
- Harriet Lesko
- Cynthia Lesser
- Jay Levin
- Bob and Caren Linden
- Deborah Linder
- Merrill Mazzella
- John Murphy and Barbara Senges
- Leslie and Harvey Orenstein
- Andrew and Adrienne Parad
- Amy Perry and Bill Posage
- Michael and Marcia Reinhard
- Karen and Aaron Rosenberg
- Jonathan and Armi Rowe
- Bart Sayet and Lori Lindfors
- Harvey and Ellen Schiller
- Elwin and Cheryl Schwartz
- Adam and Mary Seidner
- Greg and Sarah Selke
- Patricia and Alvin Sher
- Randee Siegal and Charlotte Frank
- Donald and Lois Steinman
- Martin and Margaret Trehub
- Nancy and Robbin Trostler
- Claire Warren, Ben, Leah, Adriana, Jacoby, Oliver Shiling
- Gail and Steve Weber
- Vivian Weinberger
- Nathan and Shelley Weiss
- The Reisner-Winograd Family
- Barbara and Scott Wolfe
- The Zettler Family
- Benny's Educational Toys
- B.J.'s, Waterford
- Costco, East Lyme
- Stop and Shop, Waterford
- The Crown Supermarket, West Hartford

Thank you for supporting the Temple Emanu-El Purim Bag Mishloach Manot Fundraiser 2021.

L'chaim,

Deborah Linder,

TE Fundraising Coordinator



Temple Emanu-El **Passover Seder**

March 27, 2021

Drive through to pick up and borrow a copy of the new **Mishkan HaSeder** haggadah on

March 23, 2021

12:00 -1:00 P.M.

or

5:00 - 6:00 P.M.



Zoom link will be posted on the Temple Website Calendar at www.tewaterford.org and in your weekly e-mail the week before.



Lox Down Lunch with a Friend

BYOB -- Bring your own bagel

Live Music and Schmoozing
with Harvey Snitkin (Me and My Shadow)
for seniors and those that are homebound

Every Friday during March 2021

12:00 - 1:00 P.M.

Zoom link will be in weekly e-mails and on the Temple Emanu-El Website Calendar:
www.tewaterford.org

Gift Cards

The need to help those in crisis due to unexpected emergencies knows no season. Please consider donating Stop and Shop, Shop Rite, Big Y, Walmart or other gift cards for people in need. The Temple office receives calls for help purchasing food and other basic necessities throughout the year.



In the Beit Midrash (House of Study) – 5781

Check the calendar on our website, www.tewaterford.org for links to classes and programs

Rabbi's Coffee House: Tuesdays, 9:00 A.M. – 10:00 A.M.

Each week stop into Rabbi Marc's virtual coffee house and talk about whatever is on your mind. You'll have to make your own coffee.

Mussar: Mondays, 12 P.M. to 1 P.M.

Each week through the 2nd week in June. This discussion session will be based upon The Mussar Torah Commentary edited by Rabbi Barry Block and selections from the classic Mussar text Messilat Yesharim. Study and conversation led by Rabbi Marc.

Adult Hebrew Translation Class with Sherry Barnes

Wednesdays, 11 A.M. to 12 P.M.

This class has been meeting for a while and is up to chapter 13 in their book, Prayer Book Hebrew The Easy Way by EKS Publishing. Our goal is to be able to translate prayers and maybe even some Torah.

Adult Beginning Hebrew Class with Sherry Barnes

Thursdays, 12:00 P.M. to 1:00 P.M.

This class is open to anyone wanting to learn how to read Hebrew. We will start with the Hebrew Aleph-Bet and vowels. Our goal is to be able to read prayers in our siddur, prayer book. If you already know Hebrew, but are a bit rusty, you are also welcome to join the class. Bring your lunch and come learn Hebrew!

Meditation, Prayer and Bible Study:

Saturday Mornings at 10 A.M. on the 2nd Saturday thru June

A 15 to 20 minute prayer and meditation session based upon liturgy and verse followed by a 40 to 45 minute conversation based upon the Torah and Haftarah reading of the week. When a bar or bat mitzvah coincides with the 2nd Saturday, expect a traditional Reform liturgy open to the entire Emanu-El community. Meditation and study co-lead by Rabbi Marc and Sherry Barnes.

Shabbat Morning Learners Service

Saturday Mornings at 10 A.M. on the 3rd Saturday thru April

Rabbi's Appointments

Something on your mind that you need help thinking through or just need to talk about? Concerned about something going on at the Temple or in the community? Or you'd just like to get to know one another. Rabbi Marc is available nearly every day, except Wednesdays for one-on-one, couples, or family meetings. Contact Rabbi Marc directly or schedule an appointment through Roberta in the Temple office.

Questions can be directed to Rabbi Marc at marcekstrand@gmail.com or Sherry Barnes at shirie3860@aol.com.

**Zoom links will be posted on our Temple Emanu-El calendar which you can find on our website
www.tewaterford.org.**




**FOR ALL YOUR
REAL ESTATE NEEDS**

Direct: 860-443-4400 Cell: 860-625-5255
Email: Geoff@CallTheHouseMan.com
Website: www.CallTheHouseman.com
Blog: CTHouseMan.com



860-443-CITY (2487)

PsychologyCT.com

Schaperow Psychology & Associates:
Thorough diagnostic assessments; psychological testing; individual, marital, & family therapy.

Drug & Alcohol Treatment:
Clinicians that specialize in drug & alcohol treatment.

And:
Cognitive Behavioral Therapy (CBT) Center:
Evidence-based CBT to improve mental health, and decrease stress for certain physical illnesses.
860-447-2047 / PsychologyCenterOffice@gmail.com



**NEW LONDON
SELF-STORAGE**

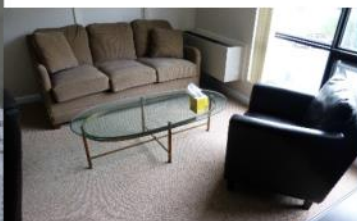
CLIMATE CONTROLLED
860-442-0008

www.NLSelfStorage.com

*Conveniently Located Just Over
the Waterford Town Line
at 960 Bank St., N.L. behind Sign-A-Rama*

- Brand New, Clean Facility
- 24/7 Video Surveillance
- Secure Gate with Keypad Entry
- Month to Month Rentals
- Free "We'll Pick It Up" Service
- Locally Owned & Managed
- 200+ Units - 6 Sizes, up to 10'4" ht.
- Climate Controlled Automobile Bays
- Boxes, Locks, Packing Supplies

Psychology CT LLC is **seeking renters**, as we have **beautiful offices available** in Waterford. These offices are perfect for professionals (e.g., therapists, massage therapists, small practice attorneys & accountants, certain kinds of physicians, etc.), especially those that don't need a reception area, but may still benefit from a waiting area. Please see <https://sites.google.com/site/schaperowpsychology/office> for details, or email psychologycenteroffice@gmail.com for more information. PsychologyCT.com



TEMPLE EMANU-EL
PO BOX 288
WATERFORD, CT 06385

Please use PO BOX 288 WATERFORD, CT 06385
when mailing material to the temple

Non-Profit
Organization
U.S. Postage PAID
New London, CT
06320
Permit #480

Deadline for April 2021 Bulletin is Friday, March 12

Email your articles to Roberta at office@tewaterford.org

CHANGE SERVICE REQUESTED

Our Leadership

Rabbi / Marc Ekstrand / rabbi@tewaterford.org
Rabbi Emeritus / Aaron Rosenberg / arloveskr@aol.com
Cantorial Soloist / Sherry Barnes /
cantorialsoloist@tewaterford.org
President / Jo-el Fernandez / president@tewaterford.org
1st Vice President / Andy Parad
VP of Building and Grounds / Russell Sheikowitz /
buildingsgrounds@tewaterford.org
VP of Religious Practices / Jo Michaelson
Treasurer / Thomas Smith / treasurer@tewaterford.org
Financial Secretary / Bruce Goldstein
Recording Secretary / Marcia Reinhard
Corresponding Secretary / Deborah Linder
Immediate Past President / Sean Bendick
pastpresident@tewaterford.org
3 Year Trustees: Robbin Alpert, Susan Cramer, Allison Glickman,
Amy Perry
2 Year Trustees: John Murphy, Irene Brickman Smith, Gail We-
ber, Scott Wolfe
1 Year Trustees: Paul Kanfer, Steve Panikoff, Edee Smith

Membership Co-Chairs / Allison Glickman & Erica McCaffrey

Social Action Chair / Marty Zeldis

Sisterhood / Merrill Mazzella & Gail Weber /

sisterhood@tewaterford.org

Gift Shop / Susan Hausmann / judaicashop@tewaterford.org

Brotherhood / Scott Zettler / brotherhood@tewaterford.org

Kitchen Committee Chair / Edee Smith

Religious School Administrators / Armi Rowe &

Jennifer Zettler / religiousschool@tewaterford.org

Office Administrator / Roberta Reisner-Winograd /

office@tewaterford.org

Webmaster / Aaron Kaplan / webmaster2@tewaterford.org

Custodian / Don Kasper

Bulletin Editor / Mimi Perl

Location: 29 Dayton Road, Waterford, CT 06385

Mailing Address: PO Box 288, Waterford, CT 06385

Office: **860-443-3005**

Religious School: **860-439-0406**

Website: www.tewaterford.org