



Rabbi's Message - Marc Ekstrand

Friends,

We have arrived at a turning point. At our recent meeting, our congregation voted to authorize the

Board of Trustees to convey our land to form a community campus with Congregation Beth El and the Jewish Federation of Eastern Connecticut. It was not an easy decision. Many good questions were asked. The congregation expressed through its vote faith that partnership with other Jewish organizations is the best way to ensure that Temple Emanu-El can fulfill its mission as the only Reform congregation in Southeastern Connecticut.

If the vote did not go the way you had hoped, a normal response might be to consider if Temple Emanu-El is still the Reform Jewish home for you and your family. The most frequent concern that I heard before this decision was that Temple Emanu-El would lose its Reform identity. The vote did not change any of the fundamental values of Temple Emanu-El. If the vote did not go the way you wanted or expected, rest assured that Reform Judaism is still the foundation of Temple Emanu-El's mission.

Our mission needs your strong support going forward. The best way to respond to concerns for our identity is to get involved in any way you can. If you felt that the best path forward is in collaboration, we need your support to be a good collaborative partner. If you have been a solid contributor to our mission, please don't back away now. We need you now more than ever. If you have been a more passive member, now is the time we could use your support of time, energy, and wealth. Our mission hasn't changed - building a vibrant community through Reform Judaism. If we approach you to be part of a committee, serve on the Board of Trustees, or volunteer, please figure out a way to say yes. If something is missing in what we do, help us get started doing it. If you have just a few dollars or many dollars, help us with regular donations. Please do not

back away; instead, double down. The decision we made together does not solve our financial problems. Only a higher level of commitment from everyone will enable us to make our vision of building a vibrant community through Reform Judaism a reality.

We are at another turning point. We all just witnessed the historic trial in Minneapolis. Many of us were anxious before the verdict. During the trial, we watched painful videos and listened to heart-wrenching testimony. As much as it seemed that a just ruling from the jury was sure, there was enough doubt, based upon experience that justice could be denied once again.

It is a national tragedy that many in our country cannot see the police as helpful, protective public servants. The verdict in the trial for George Floyd's murder was not against all police but one particular former police officer. Yet, this murder and many others are evidence that our nation has a racism problem. Unjust policing is only one symptom of this terrible disease. The thoroughly documented racial imbalance in policing, prosecution, incarceration, wealth inequality, health care, educational outcomes, and many other statistics indicate that our racism is a structural problem. The white experience of America is far different than the American experience for people of color. Racism is our national disease. The vaccine for this disease is in our hearts and actions.

The Religious Action Center of Reform Judaism (The RAC) is on the front lines in developing responses to racism. Changes are necessary so that our country can live up to its highest ideals. Between my writing and when you receive this article, The RAC will have chosen its legislative focus over the next year. Whether the focus is on ensuring voting rights or exploring reparations for slavery, now is the time for action. If we are to be a light to the nations, we must help make change happen. Go to www.RAC.org to find out how. We have a voice. If we use it, we can be powerful. In the coming weeks, I'll be telling you more about how you and I can be involved with The RAC and other activities to build a vibrant community for all.

L'shalom,

Rabbi Marc

President's Message



April 18th, 2021 was a historic day for Temple Emanu-El. On this day, Temple Emanu-El members voted overwhelmingly, with vision and courage, to approve moving forward towards a partnership with our friends at Congregation Beth El and at the

Jewish Federation of Eastern Connecticut to co-locate on one campus at 29 Dayton Road, Waterford.

In the hours after the meeting, I spoke with Beth El president Kathleen McFadden and JFEC president Romana Primus. We are all in agreement that this will lead all 3 organizations towards greater financial stability, more vibrant holiday observances and social events, and a more secure future for Jewish life in southeastern Connecticut. And, we are all committed to maintaining a fair, open, and transparent process of negotiating our differences while respecting and appreciating the identity of each organization.

I cannot offer enough thanks to Temple Emanu-El's representatives on the campus committee: committee chairperson Gail Weber, TE vice president Andy Parad, Rabbi Marc Ekstrand, Kenn Fischburg, and Nate Weiss. As I can attest firsthand, each of these individuals put in countless hundreds of hours during days, evenings, weekends, and some very late nights in order to present a proposal that is truly in the best interest of our temple and the entire southeastern Connecticut Jewish community. This proposal will allow us to remain a strong, vibrant, Reform synagogue through a pluralistic partnership with our friends in the larger community and will allow us to continue to fulfill our mission and vision.

What is our mission and vision, you might ask? Hopefully by now, all of you know our mission statement: Building a Vibrant Community through Reform Juda-

ism. But we did not have a vision statement until a few weeks ago, when Rabbi Marc expertly led an ad hoc committee consisting of myself, Andy Parad, Hali Keeler, Barbara Senges, Violet Kanfer, Gail Weber, Jennifer Zettler, Scott Zettler, Michael Barnett, Sue Fornara, and Tom Smith through a series of self-reflective exercises that enabled us to drill down to the very core of our values, and from there, to develop a vision statement that accurately reflects them. As a result, the committee developed the following mission/vision statement, which was approved by the Board of Trustees on 3/29/21:

"Let them rejoice in My house..." (Isaiah 56:7)

Building a vibrant community through Reform Judaism.

Temple Emanu-El strives to be a welcoming, diverse, and inclusive spiritual home that nourishes mind, body and soul, and inspires the next generation by living our values through meaningful worship, life-long learning, impactful social action, and shared celebrations within a fun and caring community.

This statement will guide the Board of Trustees in making decisions that reflect our values.

As I was finishing this article, I heard the news that Derek Chauvin was found guilty on all three counts for the murder of George Floyd. It is imperative that we at Temple Emanu-El live our shared value and vision of impactful social action by getting involved in the racial justice movement on some level. While many emotions are still swirling at the news of this verdict, it is important to remember that this is accountability, not justice. Jewish organizations must speak up and fight tirelessly for true justice for our black and brown neighbors and friends, and to help make our world reflect the values that we profess.

Jo-el Fernandez

Notes from Sherry Barnes

I'm very excited that it is May. This month brings in many happy, hopeful, and special days.

May 1, my son will get his first Covid-19 vaccine! Yay! My family is closer to being fully vaccinated.

May 14, I will raise a glass in appreciation, and honor, to

my amazing friend, Terri Goldsmith. Though I am sad she isn't here, the memories we made always bring smiles to my face.

May 15, we will have the first Bat Mitzvah in our sanc-

CONTINUED ON PAGE 3

Notes from Sherry Barnes - continued from page 2



tuary since Covid-19. Though the number of people who can attend in person must be limited, this very special service will be streamed on Zoom, so everyone can enjoy this very happy day. Anyone that has become Bar or Bat Mitzvah knows the work Anna

Sheikowitz had to do in order to prepare for this special day, so please join us as we celebrate this milestone in Anna's life.

May 16, is our joint community Shavuot Service. I really enjoy when we have community holiday observances. We come together in a respectful collaboration that brings us closer to each other in worship and friendship. Services that may have not had a large attendance separately, feel so much fuller when we celebrate together. We are still on Zoom, but hopefully we will be able to enjoy these services again in person in the near future.

May 30, my dad will be 86! Very grateful to celebrate this very happy day!

May 31, one of my very dear friends will become an ordained Cantor! I'm extremely happy for her and proud of her accomplishment. I am so grateful for Zoom!

These are some of my happy, hopeful, and very special days in May. I know there are many of you marking anniversaries, birthdays, weddings, and maybe even college graduations! May these special moments bring us out this year of covid, and back into the beauty of living life.

I am very grateful to Sean Bendick's love of tech, which is responsible for our being able to Zoom our services from Temple! Thank you, Sean! Thank you to Stan Bloustine, Armi Rowe, and anyone who is stepping up to learn the ropes!

A very big thank you to all of you who have sent in donations to my fund or any of Temple Emanu-El's funds. Your donations are very much appreciated and help keep us running.

B'shir,

Sherry

Temple Emanu-El Religious School (TERS)

We hope everyone enjoyed their Spring Break. It is certainly joyous to now have spring weather and to see the beautiful sprouting leaves and flower buds on trees and bushes. Even more hopeful is the fact that we are all finally receiving our COVID-19 vaccinations.

We did it! We made it to the last lap of a pandemic religious school year. We are so grateful to all of our teachers and faculty assistants who adapted to our virtual teaching format this year. They provided structure and consistency and they followed an excellent values-based Judaics and prayer Hebrew curriculum thanks to Shalom Learning and JLearnHub. Most importantly, they successfully bonded with their students all year long.



As we wrap up the school year, the focus of this month's curriculum is reviewing Shalom, helping to create a calmer and more peaceful world. Our younger learners will learn about how to resolve conflicts and how Shabbat is a path to wholeness and peace. Our older students will learn about Jewish peacemakers, creating peace in the home, and the concept of saving one person as if you have saved the world.

There are six days of religious school left in the month of May. Our students will have only **two more 1:1 prayer Hebrew** practice sessions with their teachers on **Wednesday, May 5 and Wednesday, May 12**. And

CONTINUED ON PAGE 4

Temple Emanu-El Religious School (TERS) - continued from page 3

we have **four remaining Sunday sessions on May 2, 9, 16 and our final day of religious school, May 23.**

Please plan on joining us again for our **next First Friday Family Shabbat on Friday, May 7, 2021 at 6:45 p.m.** Tot Shabbat is at 6:45pm and Tefillah Time is at 7:05pm. Stay on for regular Shabbat service beginning at 7:30pm.

One more round of applause for former Israel Emissary Hadar Elya whose final visit was with our students in Kitah Vav and Kitah Zayin on Sunday, April 4. She was so engaging and informative. The students enjoyed her teaching style as well as learning some modern Hebrew vocabulary with her through fun and games. Thanks again to Marcia Reinhard for helping to make this possible.

Parents and teachers, please submit photos of your children/students as soon as possible to religious@templeemanuel.org

chool@tewaterford.org so that we can build a memorable slideshow for our year end program.

Please save the dates and join us for the following special events:

Saturday, May 15 at 10:00 a.m. Shabbat / Bat Mitzvah of Anna Sheikowitz, one of our Kitah Zayin students (let's all be there to support her)

Friday, May 21 at 6:00 p.m. for Family Fun Friday Game Night (details and zoom link to follow)

Sunday, May 23 at 9:30 a.m. for Religious School Year End Celebration

Shalom,

Armi and Jennifer

Religious School Co-Directors

URJ Survey Coming Soon -- May 4

As you may remember, Temple Emanu-El sent out a survey last year as part of a Union for Reform Judaism (URJ) initiative. The data gathered from Temple Emanu-El and many other congregations was used to gauge the effects of the pandemic on URJ congregations.

We directly benefited from your responses, letting us know what we were doing well and what we needed to improve upon. The feedback we received, which was overwhelmingly positive, was very helpful.

The survey was also part of a larger initiative called the Benchmarking and Assessment Project. This project has also included a review of the Temple's governance and operation. Over the coming months, the URJ will be assisting us in developing an action plan to help

strengthen our congregation and ensure its future.

It is now time to go through another step in the Benchmarking and Assessment Project process. In the next week you will receive an invitation to complete a second survey. **The target date for you to receive an email to participate is May 4.** Please complete the survey at your earliest convenience. The more feedback we get, good or bad, the more this will help us going forward.

The URJ stands ready to help us as an organization and this survey is an important part of making that happen. Thank you in advance for your help.

**Andy Parad, Vice President
Rabbi Marc Ekstrand**

Anna Sheikowitz Bat Mitzvah - May 15, 2021



Anna Cloe Sheikowitz will become a Bat Mitzvah on **Saturday, May 15, 2021**, assisting Rabbi Marc Ekstrand and Cantorial Soloist Sherry Barnes in leading services on Friday evening, May 14, and Saturday morning.

Anna is the daughter of Leah Stillman and Russell Sheikowitz, and sister of Daniel Sheikowitz. A member of Temple Emanu-El since birth, Anna celebrated her baby naming on the same bima she will become a Bat Mitzvah! Anna is an active student at the Temple Emanu-El religious school, and very involved in temple life, engaging in numerous community service projects and embracing core Jewish values. She is also an active member of the Jewish Federation of Eastern CT Junior Youth Group.

Anna is a seventh-grade high honors student at John Winthrop Middle School in Deep River, CT.

She plays the baritone horn and sings in the chorus at JWMS. She is also a member of the Middle School Drama Club and Youth in Action Club.

Anna has been a Girl Scout for eight years and has been active in local youth theatre, playing roles in Alice in Wonderland, The Lion King, Annie, Suessical, Willy Wonka and the Chocolate Factory, Frozen, and The Wizard of Oz.

In the summer months, Anna is a camper at Camp Young Judaea in Amherst, NH. This will be her fifth summer at Camp YJ.

Anna is very passionate about volunteering in her community. For her mitzvah project, she is working with the Homeless Hospitality Center in New London, putting together “Welcome Home” boxes for those community members transitioning into their own homes.



Events & Service Schedule

Zoom Links can be found on the Temple Website Calendar for events and services.

www.tewaterford.org

May 4	Tues.	Rabbi's Coffee House	9:00 A.M.
May 5	Wed.	Adult Hebrew Translation Class	11:00 A.M.
May 6	Thur.	Beginning Hebrew Class	12:00 P.M.
May 7	Fri.	Family Tot Shabbat	6:45 P.M.
May 7	Fri.	Family Tefillah Time	7:05 P.M.
May 7	Fri.	Shabbat Service/Sisterhood will be participating	7:30 P.M.
May 8	Sat.	Meditation, Prayer and Bible Study	10:00 A.M.
May 11	Tues.	Rabbi's Coffee House	9:00 A.M.
May 11	Tues.	Temple Emanu-El Sisterhood Book Club	7:00 P.M.
May 12	Wed.	Adult Hebrew Translation Class	11:00 A.M.
May 12	Wed.	Temple Emanu-El Board of Trustees Meeting	7:30 P.M.
May 13	Thur.	Beginning Hebrew Class	12:00 P.M.
May 14	Fri.	Shabbat Service	7:30 P.M.
May 15	Sat.	Shabbat Morning Service	
		Anna Sheikowitz's Bat Mitzvah	10:00 A.M.
May 16	Sun.	Shavuot Learning and Service	7:30 P.M.
May 17	Mon.	Shavuot Service including Yizkor	10:00 A.M.
May 18	Tues.	Rabbi's Coffee House	9:00 A.M.
May 19	Wed.	Adult Hebrew Translation Class	11:00 A.M.
May 20	Thur.	Beginning Hebrew Class	12:00 P.M.
May 21	Fri.	Family Fun Friday Game Night	6:00 P.M.
May 21	Fri.	Kabbalat Shabbat Service	7:30 P.M.
May 26	Wed.	Adult Hebrew Translation Class	11:00 A.M.
May 27	Thur.	Beginning Hebrew Class	12:00 P.M.
May 28	Fri.	Kabbalat Shabbat	7:30 P.M.

Recipe of the Month

Don't forget to check out the recipe of the month the Temple Home Page, tewaterford.org.
Previous monthly recipes are under "recipe of the month" as well.

Sisterhood -- Merrill Mazzella & Gail Weber, Co-Presidents

Dear Sisterhood Friends,

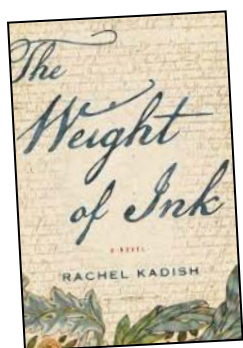
Last month we enjoyed some online fun with a virtual scavenger hunt and hosted a joint Book Club meeting complete with the author, Jonathan Kaufman, who wrote "The Last Kings of Shanghai: The Rival Jewish Dynasties That Helped Create Modern China." The Book Club meeting welcomed Hadassah to join in and we had over 50 screens viewing this engaging presentation. We'd like to thank the following who helped to facilitate the event on a somewhat short timeline: Karen Rosenberg, Cecile Feldman, Karen Bloustine, Sheila Horvitz, Carol Curland, Sherry Barnes and the Jewish Federation. Thank you, ladies!

The month of May brings us to our annual Sisterhood Shabbat Service on **Friday, May 7 at 7:30 p.m.** In advance, we'd like to thank Eileen Shapiro for coordinating the service, and to all Sisterhood members who will be participating. Please join us for this special service!

Wishing you all the best,

Merrill and Gail

Sisterhood Shabbat Service: On **Friday, May 7, at 7:30 PM** the Sisterhood will lead the Shabbat service as is our tradition to do on the weekend of Mother's Day. We all look forward to this special Shabbat service honoring the women in our lives and those who came before us.



Book Club: On **Tuesday, May 11 at 7:00 p.m.**, "The Weight of Ink" by Rachel Kadish will be the book being discussed. All are welcome to join in the discussion.

Save the Date: Thursday, June 10: We're looking ahead to our **END OF THE YEAR SISTERHOOD GATHERING.** Please save the date for what we're hoping (fingers crossed), **might possibly, hopefully, be our first in person Sisterhood get together** in over a year. We can't say for sure, just yet, but we will plan for an event on this date, whether in person or via Zoom. Please plan to join us that evening! Stay tuned...

Temple Website - Sisterhood Listing:

Our Webmaster, Sue Fornara, has suggested that if you're ever wondering what's going on with the Sisterhood (programs, events, etc.), you can always find out by going to the Sisterhood section on the Temple Emanu-El website. This can be found from the Temple Emanu-El homepage by clicking on "Get Involved" and then clicking on "Sisterhood". Thank you, Sue!

Temple Emanu-El Gift Shop:

Browse our selection of jewelry, tallit, candlesticks, candles, gift ideas and more on the website. The Gift Shop website contains over 300 items and is always being updated with new merchandise. Check it out by clicking on the Judaica Shop link on our



Temple website or go to <https://judaicashop.wixsite.com/website>.

Please contact me if there is something you don't see. The website is always open and pickup arrangements are very flexible. I can always be reached at Judai-cashop@tewaterford.org.

Susan Hausmann

SOCIAL ACTION MEETING

SUNDAY, MAY 16 AT 11:00 A.M.

Everyone is welcome to attend. Please bring your own chair and mask.

The meeting will take place in the Temple Emanu-El parking lot.

If you have any questions, please contact **Marty Zeldis**, (860) 442-4580 or ztr8n@aol.com



We are eternally thankful for the support of those below. . .

Aaron and Pearl Parker Religious School Fund

Michael and Marcia Reinhard
---for the good health of Irene Brickman Smith and Tom Smith
---in loving memory of Irwin Tuchfeld on his yahrzeit
---in memory of Ruth Dunkerley
---In honor of Abe Fisher's "Special Birthday"
---in loving memory of Jody Katz
---in loving memory of Alicia Bauer
---in loving memory of my mother, Shirley Feuerman, on her yahrzeit
---in gratitude to Deborah Linder for all her work on the Purim Mishloach Manot bags
---in honor of our daughter, Rebecca Reinhard, receiving her first credit as an Assistant Editor

Cantor's Fund

Kenn and Kim Fischburg
Norma and Al Hollandersky
---in memory of Claudia Shapiro
---in memory of Mary Kelly Smith, mother of Tom Smith and mother-in-law to Irene Brickman Smith

Craig Blumsack Fund

Joseph C. Quaratella, Jr.
---in loving memory of Joseph C. Quaratella

Endowment Fund

Lois and Steve Panikoff
---in loving memory of Rebecca Goodman on her yahrzeit

Essential Services

Abraham and Sandy Fisher
---deepest sympathy to Lester Shapiro and the Shapiro family
---in memory of Evelyn Drieseen on her yahrzeit
Alvin and Patricia Sher
---in honor of and in appreciation of Harvey doing Lox-down Lunch
---in honor of Rabbi Marc Ekstrand's birthday
---in honor of Rabbi Polly Berg's birthday
Barbara and Peter Kallan
---in memory of Claudia Shapiro

Bruce Engelman
---in memory of Morse Engelman on his yahrzeit
Claire Gaudiani
---in memory of Claudia Shapiro, a great person, I loved like a sister for 30 years.
Eileen and Robert Horan
---in memory of my dear friend Claudia Shapiro
Erva Beard
---In memory of Claudia Shapiro
Hazel Shaw
---in memory of Claudia Shapiro
Iris and Gary Freeman
---in loving memory of Marilyn Freeman on her Yahrzeit
---in loving memory of Dorothy "Dolly" Abrams on her yahrzeit
---in memory of Claudia Shapiro
---in memory of Norman Ruderman
Joan Levine
---in appreciation of using copies of the Religious School Haggadah for the StoneRidge Seder
Judy and Stephen Mann
---in memory of Claudia Shapiro
---in memory of Mary Smith
Leonard and Helen Goldstein
---In loving memory of Louise Goldstein on her yahrzeit
Martin and Joanna Lazarus
---in memory of Claudia Shapiro
Martin Zeldis
---in memory of Claudia Shapiro
---in memory of Sylvia K. Zeldis on her yahrzeit
Michael and Marcia Reinhard
---in memory of Richard Seidner, father of Adam Seidner and father-in-law to Mary Seidner
---in memory of William Morea, father of Greg Morea and father-in-law to Barbara Morea
---mazal tov to Sandy Greenhouse and Jo-el Fernandez on the birth of their granddaughter, Chloe Hazel Greenswann
---in memory of Marsha Sperling, sister of Barry Feldman and sister-in-law to Cecile Feldman
---in honor of Cecile Feldman receiving the Howard Ilson Award

CONTINUED ON PAGE 9

Please make checks payable to Temple Emanu-El and remit to PO Box 288, Waterford, CT 06385

Michael and Marcia Reinhard

- in memory of Judy Weber, mother of Steve Weber and mother-in-law to Gail Weber
- mazal tov to Patty and Jay Hans on the birth of their grandson, Barrett Taylor Hans
- in honor of the Adult B'nai Mitzvah Class; Mazal Tov to Marianne DeBruyn, Erik Brengman, Irene Brickman Smith, Thomas Smith and Claire Warren
- in memory of Mary Kelly Smith, mother of Tom Smith and mother-in-law to Irene Brickman Smith

Michele and Harvey Snitkin

- in memory of Claudia Shapiro

Patricia and Jay Hans

- mazel tov to Sean Bendick on being the Howard Ilson Award honoree
- in loving memory of Claudia Shapiro

Patricia Murphy

- condolences to Lester Shapiro; I have great respect for Claudia's memory

Patricia Shaw

- in memory of Claudia Shapiro

Paula Garnica

- in loving memory of Mary Shleffar on her yahrzeit

Robert and Caren Linden

- in memory of Claudia Shapiro

Larry Siegel and Cheryl Matravers

- For Angel Michele Snitkin, a leaf is being placed on the Tree of Life

Sisters and Children of Ethel Snitkin

The Burnett-Gaudiani Fund

- in memory of Claudia Shapiro

Your a team

Matthew Fasulo

- with heartfelt condolences to Mrs. Patty Shaw in memory of her aunt Claudia Shapiro

Patricia and Jay Hans

- mazel tov to Sean Bendick on being the Ilson Award honoree
- in loving memory of Claudia Shapiro

Goldsmith-Kallan Fund

Lori & Mitchel Corah

- in memory of Glenn Gerber
- in memory of Richard Mallove

Mitzvah Fund

Hali and Gerry Keeler

- in memory of Claudia Shapiro
- in memory of Frank Kelco on his yahrzeit
- Mike and Flossie Betten
- in loving memory of Claudia Shapiro

Rabbi Aaron Rosenberg Tikkun Olam Scholarship Fund

Kenn and Kim Fischburg

Jane and Henry Weinberg

- in memory of Carol Glick
- Norma and Al Hollandersky
- in memory of Libby Isaac
- in memory of Barry Feldman's sister, Marsha Sperling

Rabbi's Discretionary Fund

Kenn and Kim Fischburg

Bruce Goldstein

- in memory of my father-in-law Sidney Shanbrom, Lori's dad and in gratitude for Rabbi Ekstrand's comfort to the family; We appreciated the caring response we received from the Temple Emanu-El community.

Edward Perry

- in memory of Richard Mallove

Ethel Chatkin

- in memory of Claudia Shapiro
- thank you to Michelle Snitkin for her kindness bringing dinners and Challah to me
- thank you to Rabbi Marc for cleaning my deck

Jane and Chic Weinberg

- in loving memory of Freda Weinberg on her yahrzeit

Judith Glickstein

- in memory of my friend, Claudia Shapiro
- Leslie and Harvey Orenstein
- in memory of Claudia Shapiro - a beautiful person we will miss

Michelle Blinderman-Davis

- in loving memory of Gertrude "Pat" Blinderman

We are eternally thankful for the support of those below. . . Continued from page 9

Norma and Al Hollandersky
-- congratulations to Barbara and Scott on the birth of their grandchild, Wes Hewitt Bentley
-- in honor of the Adult B'nai Mitzvah Class;
Mazal Tov to Marianne DeBruyn, Erik Brengman, Irene Brickman Smith, Thomas Smith and Claire Warren

Ruth Joan Brody Religious School Fund
Stuart and Marilyn Fishbone
---in memory of Claudia Shapiro

Thank you to everyone who made contributions to Temple Emanu-El and sent cards in memory of Claudia Shapiro.
Lester Shapiro

Condolences to . . .

Bradley and Rachel Sherman & family
on the passing of Bradley's mother,
Barbara Shaw

Anthony and Jacqueline Mazza and family
on the passing of Anthony's mother,
Helen Mazza



Temple Audio Visual Club Looking for Members

Were you in your High School's AV Club? Jealous of the kids that were? Are you studying Video Production and are looking for some related volunteer hours? Or are you, like me, just a nerd who likes playing with computers and cameras? Well, the Temple can use your help!

As we get closer to returning to services in our sanctuary, we want to continuing to use platforms like Zoom to engage members and friends who may not be able to join us in person. To support continuing our virtual presence, the sanctuary is being wired for broadcast. Cameras have

been installed, and we've purchased equipment to help polish our service's production quality. **The only thing we're missing is YOU!**

I'm looking for a group of people interested in running the video production on Friday Nights and other events. Computer experience is important. Video production experience is helpful, but not necessary. **If you're interested, please contact Sean Bendick at sbendick@gmail.com, or contact the Temple Office.**



May Birthdays

Emma Gail Arruda
 Florence Betten
 Karen S. Bloustine
 Eric Blum
 Dianne Wilkomer Brody
 Rhonda Daniels
 Harris Daniels
 Henry Dunkerley
 Haley Flax
 Trevor Fornara
 Paula Garnica
 Alice Gilbert-King
 Richard Gipstein
 Lori Goldstein

Barry E. Greenhalgh
 Sanford Greenhouse
 Alan Gruber
 Patricia Gruber
 Peter Gruber
 David Hausmann
 Mike Haynes
 Robert Hoffman
 Lance Holwitt
 Merrill Katz
 Adam Kaufman
 Isaac David Kaufman
 Gladys Kimmel
 Joshua Krasney

Anne Kronisch
 Emily Lerner
 Caren Linden
 Camrynn Marcus
 Justin Mazza
 Sierra McCaffrey
 Sybil Nassau
 Mikayla O'Brien
 Edward Perl
 David Sayet
 Cheryl Susan Schwartz
 Joseph Segal
 Ben Shiling
 Perry Anne Smizer

Brendan Suroviak
 Mark Tsai
 Nathan Weiss
 Gabrielle Emily Zettler



May

Anniversaries

Stanley A. and Karen S. Bloustine
 Scott and Rhonda Daniels
 Bruce and Lisa Darling
 Leonard and Helen Goldstein
 Rick and Tammy Kaye
 Martin and Joanna Lazarus
 Richard and Sheri Pascal
 Mike and Marcia Reinhard
 Elwin Garth and Cheryl Susan Schwartz
 Alvin and Patricia Sher
 Nathan and Shelley Weiss

William Miller
 Mary Louise Murphy
 Bernard L. Ryack
 Anna Schlesinger
 Phillip Schlesinger
 Eleanor Samuels Schnur
 Bernard Shulman
 James Solomon Smith
 Samuel Steckler
 Esther Sutel
 Martin Yavener

May 14

Marcia Bentley
 Ruth Cotton
 Milton Finkelstien
 Beatrice Fishbone
 Irene Fox
 Glafira Gonzalez
 Irving Gordon
 Kathleen Greenhalgh
 Kurt Hopfer
 Beverly Keeler
 Lothar Knobel
 Julian Krieger
 Ida Resnick
 Anne Ressler
 David Rifkin

May Yahrzeits

Sam Sitko
 Carl Stoner
 Marion Vail
 Nathaniel Wharton
 Mark Wildstein

May 21

Jerry Arenson
 Mary Ann Connell
 Lena Epstein
 Judy Flax
 Helen Friedman
 Michael Goodman
 Bessie Levine
 Mason Marcus
 Mildred Orenstein
 Dr. Jeanne C. Prokesch
 Wendy Senges Ryder
 Irving Shafner
 Morris Sherman
 James Shleffar
 Ernest Jacob Shoor
 George Trehub
 Hilda Ursinus

May 28

Ann Brown

Rose Cantor
 Ruth Cantor
 Ruben Elijah
 Samson Engel
 Helen Epstein
 Helen Epstein
 Joseph Farran
 Barney Goldstein
 Jacob Hartman
 Israel Kaminsky
 David Kornstein
 George Orenstein
 Samuel Perlowitz
 Bernard Rosefeldt
 Lizabeth Love Ryan
 Abraham Seidman
 Arthur Seidman
 Howard Smith
 Yetta Solomon
 Alfred Sunshine
 Alice Werner

May Yahrzeits

May 7

Sidney Chivian
 Eileen Cohen
 Toby Deckler
 Martin Greenbaum
 Paul Hans
 Lillian Katz
 Barbara Kelco
 Jerry Lavender



**Psalm 137:
Always
Remembering
the Covenant
with God**

Rabbi Ken Alter
Ahavat Achim
Synagogue

**Don't Want
to Get
Symbolically
Sold Into
Marriage?
Consider a
B'rit Ahuvim**

Rabbi Marc
Ekstrand
Temple
Emanu-El
Rabbi Polly Berg
ACT Chaplain
Service, U.S. Dept.
of Veterans Affairs

**Ethically Me:
Examining the
Me through
Jewish Eyes.
Can I Live Up
to It?**

Rabbi Earl
Kideckel
Beth-El
Synagogue

Covenant & Community Tikkun L'el Shevuot a Night of Study Sunday, May 16, 7:30 pm on ZOOM

In honor of the Shevuot holiday—when we celebrate the giving of Torah to the Israelites—we engage in an evening of study.

This year, the liberal synagogues of Southeastern Connecticut will come together for two hours of study and discussion to symbolically re-create the seminal event in our lives and communities.

You will be able to choose among presentations by seven area rabbis in two different time slots. In between, we will be blessed with musical selections by our local *hazzanim*.

**What Is Our
New Jewish
Identity?**

Rav Julius
Rabinowitz
Beth Jacob
Synagogue

**From Sinai to
Southeastern
Connecticut**

Rabbi Aaron
Rosenberg
Rabbi Emeritus
Temple
Emanu-El

**A Nation in the
Image of God—
a Different Kind
of Nation**

Rabbi Jeremy
Schwartz
Bnai Israel
Synagogue

Details on next page ...

Covenant & Community Study Sessions:

Psalm 137: Always Remembering the Covenant with God

Rabbi Ken Alter
Ahavat Achim Synagogue

The beginning of Psalm 137 is chanted on the 9th day of Av, the date of the destruction of our Temple:

*How shall we sing the Lord's song,
If I forget thee o Jerusalem,
let my right hand forget its skill.
If I don't remember you, let my
tongue cleave to the roof of my mouth,
If I do not exult Jerusalem above my
chief joy.*

We will take an in-depth look at Psalm 137 and discuss how the Godly could never forget Jerusalem and all that it stood for: the covenant, the Temple and reconciliation.

Ethically Me: Examining the Me through Jewish Eyes. Can I Live Up to It?

Rabbi Earl Kideckel
Beth-El Synagogue

This year has brought us many opportunities to examine what is important in life. Needless to say, we have experienced profound moments to explore the Psalmist's question: "Who is the person who seeks out life?" Perhaps we might read the Hebrew with a different set of punctuation marks that provide a greater understanding of our covenantal relationships. In our session, we will begin the discussion through Jewish lenses.

Don't Want to Get Symbolically Sold Into Marriage? Consider a B'rit Ahuvim

Rabbi Marc Ekstrand
Temple Emanu-El

Rabbi Polly Berg
VACT Chaplain Service,
U.S. Dept. of Veterans Affairs

The Covenant of Marriage isn't going away. But does the set of rituals that make up a wedding ceremony really reflect the ideals of our community? Rabbi Rachel Adler, Jewish feminist icon, author, and professor at HUC, repurposed an ancient ritual contract of Jewish partnership—a document anchored with Biblical verses of love and covenant—to create an egalitarian partnership ceremony she called B'rit Ahuvim, a Lover's Covenant. We will examine the topic of wedding covenant and the liberal Jewish community.

What Is Our New Jewish Identity?

Rav Julius Rabinowitz
Beth Jacob Synagogue

As more and more liberal synagogues merge to form new communities, they must re-write the definitions of their previous organizations. Through the perspective of such ancient authorities as the Talmud and Maimonides, and the application of modern concepts of social organizations such as pluralism and tolerance, we will be introduced to ways they can re-write the boundaries of their new existence.

From Sinai to Southeastern Connecticut

Rabbi Aaron Rosenberg Rabbi Emeritus
Temple Emanu-El

Discover tips on exploring your Jewish roots. Learn about genealogical resources. Surprises await you as you do oral histories, check out censuses and obits, and visit cemeteries. Create a family tree and write up your ancestors' story. Where was the Old Country, why and when did they leave? Where did they settle and why? How did you end up in CT? In doing the research, don't give up till you reach Sinai.

A Nation in the Image of God—a Different Kind of Nation

Rabbi Jeremy Schwartz
Bnai Israel Synagogue

Following the disaster of World War I, leading Jewish thinkers on both sides of the ocean were exploring how to strengthen the Jewish people without falling into the dangers of violent nationalism. Where did the Jews fit among the nations and what did their nationhood or peoplehood consist of? These questions are still relevant. We'll learn from the writings of Aaron David Gordon, a founder of the kibbutz movement, and Mordecai Kaplan, founder of the Reconstructionist movement.

[More details and Zoom link to follow](#)

Support Temple Advertisers / \$18 per month / \$165 for 11 months / Call 860-443-3005



RE/MAX[®]
ON THE BAY



**FOR ALL YOUR
REAL ESTATE NEEDS**

Direct: 860-443-4400 Cell: 860-625-5255
Email: Geoff@CallTheHouseMan.com
Website: www.CallTheHouseMan.com
Blog: CTHouseMan.com

THE City NEVER SLEEPS!

MYWHALINGCITY.COM • OPEN 24/7
BROAD & COLMAN ST, NEW LONDON • 860.443.8361

MY WHALING City

860-443-CITY (2487)

PsychologyCT.com

Schaperow Psychology & Associates:
Thorough diagnostic assessments; psychological testing; individual, marital, & family therapy.

Drug & Alcohol Treatment:
Clinicians that specialize in drug & alcohol treatment.

And:
Cognitive Behavioral Therapy (CBT) Center:
Evidence-based CBT to improve mental health, and decrease stress for certain physical illnesses.
860-447-2047 / PsychologyCenterOffice@gmail.com



**NEW LONDON
SELF-STORAGE**

CLIMATE CONTROLLED

860-442-0008

www.NLSelfStorage.com

Conveniently Located Just Over
the Waterford Town Line
at 960 Bank St., N.L. behind Sign "A" Rama

Brand New, Clean Facility
24/7 Video Surveillance
Secure Gate with Keypad Entry
Month to Month Rentals
Free "We'll Pick It Up" Service
Locally Owned & Managed
200+ Units - 6 Sizes, up to 10'4" ht.
Climate Controlled Automobile Bays
Boxes, Locks, Packing Supplies

Psychology CT LLC is **seeking renters**, as we have **beautiful offices available** in Waterford. These offices are perfect for professionals (e.g., therapists, massage therapists, small practice attorneys & accountants, certain kinds of physicians, etc.), especially those that don't need a reception area, but may still benefit from a waiting area. Please see <https://sites.google.com/site/schaperowpsychology/office> for details, or email psychologycenteroffice@gmail.com for more information. PsychologyCT.com



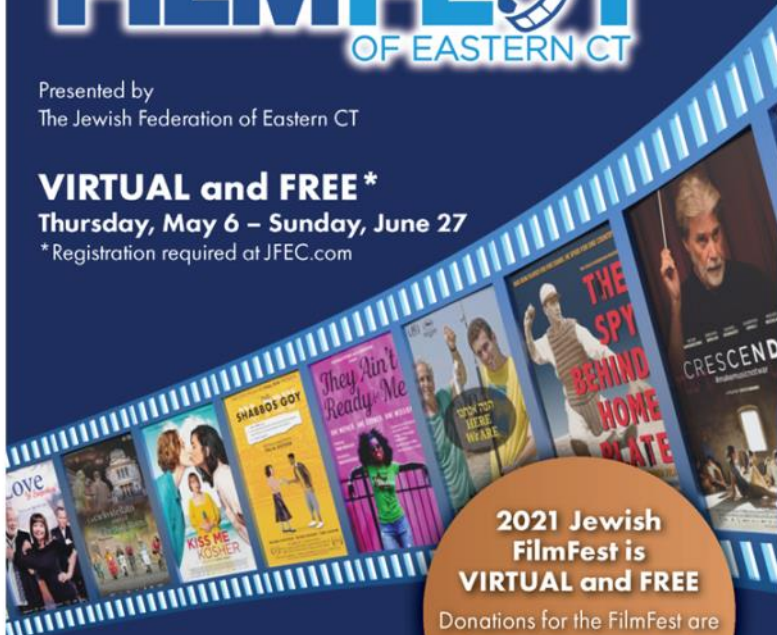
JEWISH FILMFEST OF EASTERN CT

Presented by
The Jewish Federation of Eastern CT

VIRTUAL and FREE*

Thursday, May 6 – Sunday, June 27

*Registration required at JFEC.com



**2021 Jewish
FilmFest is
VIRTUAL and FREE**

Donations for the FilmFest are
welcomed. To donate online
or find additional details,
visit JFEC.com

Movie links will be available from
Thursdays, 12:01 am – Sundays, 11:59 pm
*Registration required at JFEC.com

**SEPARATE REGISTRATION IS REQUIRED
FOR FILMS AND SPEAKERS.**

You can register for films and speakers
at <https://jfec.com/>.

On the home page scroll down
to the **CALENDAR**
and click the first date of the movie
you want and follow the prompts.

Registration links for speakers
are separate from
registration for the movie.

**Movie and Zoom links will be
emailed upon registration.**
Movie Links are available from
Thursdays, 12:01am -
Sundays, 11:59pm.

Thursday – Sunday, May 6–9

LOVE IN SUSPENDERS (Israel; Hebrew w/English subtitles; 93 minutes)

The encounter between two people with such different personalities, such as Tammy and Beno, has to result in a nightmare...but love has its own rules.

Thursday – Sunday, May 13–16

A STARRY SKY ABOVE THE ROMAN GHETTO (Italy; Italian w/English subtitles; 100 minutes)

Past and present meet upon the discovery of an old, mysterious photograph that tie together Christian and Jewish students in search of the truth.

Speaker: Director Giulio Base, Sunday, May 16, 1:00 pm

Thursday – Sunday, May 20–23

KISS ME KOSHER (Israel/Germany; Hebrew; German w/English subtitles; 101 minutes) / THE SHABBOS GOY (short)

A subversive love story between clashing cultures and families, KISS ME KOSHER is a romantic misadventure crossing all borders.

Speakers: Director Shirel Peleg & Producer Christine Günther, Sunday, May 23, 7:30 pm

Jewish FilmFest thanks our 2021 sponsors:

Yale New Haven Health, Lawrence + Memorial Hospital • Rita Hendel & Family
Patricia Hendel & Family • Litchfield Distillery • Valenti Auto Group • Nutmeg Companies, Inc.
Steven & Debra Daren • Sayet & Seder, Attorneys at Law • Carol Curland
Harry Leiser • Mallove's Jewelers • Congregation Sarah Zedek
Hochberg Holocaust and Human Rights Education Committee • Minuteman Press

TEMPLE EMANU-EL
PO BOX 288
WATERFORD, CT 06385

Please use PO BOX 288 WATERFORD, CT 06385
when mailing material to the temple

Non-Profit
Organization
U.S. Postage PAID
New London, CT
06320
Permit #480

Deadline for June 2021 Bulletin is Friday, May 14

Email your articles to Roberta at office@tewaterford.org

CHANGE SERVICE REQUESTED

Our Leadership

Rabbi / Marc Ekstrand / rabbi@tewaterford.org
Rabbi Emeritus / Aaron Rosenberg / arloveskr@aol.com
Cantorial Soloist / Sherry Barnes /
cantorialsoloist@tewaterford.org
President / Jo-el Fernandez / president@tewaterford.org
1st Vice President / Andy Parad
VP of Building and Grounds / Russell Sheikowitz /
buildingsgrounds@tewaterford.org
VP of Religious Practices / Jo Michaelson
Treasurer / Thomas Smith / treasurer@tewaterford.org
Financial Secretary / Bruce Goldstein
Recording Secretary / Marcia Reinhard
Corresponding Secretary / Deborah Linder
Immediate Past President / Sean Bendick
pastpresident@tewaterford.org
3 Year Trustees: Robbin Alpert, Susan Cramer, Allison Glickman,
Amy Perry
2 Year Trustees: John Murphy, Irene Brickman Smith, Gail We-
ber, Scott Wolfe
1 Year Trustees: Paul Kanfer, Steve Panikoff, Edee Smith

Membership Co-Chairs / Allison Glickman & Erica McCaffrey

Social Action Chair / Marty Zeldis

Sisterhood / Merrill Mazzella & Gail Weber /

sisterhood@tewaterford.org

Gift Shop / Susan Hausmann / judaicashop@tewaterford.org

Brotherhood / Scott Zettler / brotherhood@tewaterford.org

Kitchen Committee Chair / Edee Smith

Religious School Administrators / Armi Rowe &

Jennifer Zettler / religiousschool@tewaterford.org

Office Administrator / Roberta Reisner-Winograd /

office@tewaterford.org

Webmaster / Aaron Kaplan / webmaster2@tewaterford.org

Custodian / Don Kasper

Bulletin Editor / Mimi Perl

Location: 29 Dayton Road, Waterford, CT 06385

Mailing Address: PO Box 288, Waterford, CT 06385

Office: **860-443-3005**

Religious School: **860-443-3005**

Website: www.tewaterford.org