



## Rabbi's Message - Marc Ekstrand

Friends,

Summer is here. This is my last bulletin article until September. The summer feels like it will be too short already. There seems to be so much to do as our small part of the world returns to something that seems normal. As more people have chosen to be vaccinated, masks have come off, people are shaking hands, hugging again, singing at Shabbat services. The pandemic seems to be in the rearview mirror for the time being. To help us get in the summertime flow, we have a special gathering on Guthrie Beach in New London, **Wednesday, July 7 at 7 P.M.** Our special guest is our friend from the Galilee, **Rabbi Or Zohar**. We'll have a bonfire, sing, roast marshmallows, and make s'mores. I can't think of a better way to settle into summer.

Rabbi Polly and I have been carefully watching what is happening in Israel. As of this writing, the cease-fire is holding, and thankfully, there is a new government. Reform rabbis are playing an ever-increasing role in shaping Israel's future. On **Tuesday, July 6 at 7 PM at Temple Emanu-El, Rabbi Or Zohar** will discuss the

efforts that he and his partners are making toward a Jewish-Arab shared society in the Galilee. In light of current events in Israel, such as the recent military operation, street riots, and the change of government, it is all the more critical that we have leaders dedicated to building relationships. The things Or and his partners are doing in the Galilee give me hope that Israel can be a peaceful and equitable homeland for all its inhabitants.

We have so much to look forward to in the coming year. This summer, we are returning to in-person services and programs. Our Bluff Point walk is coming up. It will be wonderful to welcome our religious school children back in person in the fall. Rachel O'Brien, our teachers, and many others will be working hard over the summer to get the school ready. The religious practices committee and the re-entry committee will be developing the best and safest way for us to come together for the High Holy Days and fall festivals. We have come a long way, but the pandemic is not over. We will be keeping an eye on our public health situation. Get vaccinated if you are able. Stay safe and enjoy the summer. See you soon.

L'Shalom,

**Rabbi Marc**

## President's Message - Andy Parad

So I'll be writing this article in New Zealand, but (hopefully) receiving the Temple bulletin in Connecticut. How strange. For those of you who don't know, my family and I have spent the last seven months in New Zealand. I traveled here for a rotation as a student and always wanted to go back. After considering going several times, we felt there was no better time than the height of a pandemic. We feel very fortunate that, except for a few minor blips, we have essentially been living a normal life. The kids have been going to school. We have been going to restaurants and stores. It's as if we have been in an alternate universe

while the rest of the world has struggled to get COVID-19 under control.

For those of you who don't know me. Hi. My name is Andy. My family has been temple members for about seven years now. My wife Adrienne works in Mystic. We are both from southern New England, but ended up here because of the Navy and have decided to stay. We have three children – Jillian, Zoe, and Jack. You may have seen them running around the stage or the arc depending on the weather. The kids love the religious school and have made many friends. They are

CONTINUED ON PAGE 2

## President's Message -- CONTINUED FROM PAGE 1

looking forward to seeing them in person either this summer or in the fall.

As I've been tasked to write this on pretty much the last day before we begin our journey back home, I'm going to stick with the high points. First, we are coming off two Congregational Meetings of great importance. The first, of course, was the approval to move forward with the Community Campus. As Tom Smith highlighted in that meeting and our annual meeting, the cost implications of not going forward with this were not looking positive. Our team, led by Gail Weber, is committed to doing what is best for Temple Emanu-El in the short and especially long term. It's important that we take into account the fact that we want to build bridges with other communities which will in turn enhance Temple Emanu-El. Rabbi Ekstrand has started this important work and the campus will help continue this.

While we will be working diligently on the campus, it's important to not lose focus of what OUR mission and vision is. Our job is to build a vibrant community. There are so many people who already do so much to keep the Temple running. I think there are many more people who would like to be involved in some way, but either don't know how or are fearful of the commitment. The Temple has plenty of committees looking for involvement. The social action committee, the religious school committee, the membership committee

and now the AV committee are some of my favorite groups to point out to those motivated enough to join on. Really, all of these committees (and more, I have a list) are what you make of them. You could simply show up at meetings or you could take on a more active role. It's all volunteer; there is no commitment. If you don't like one you could always try another. Please let me or anyone else on the board or Roberta know if you would like to join on. Or if you would like to host an event or a get-together as a one off, that would be great too. It could be as simple as scheduling a meeting place and time and letting everyone know you will be there for anyone who would like to join. The more involvement we have, the more people out in the community who will want to join us and the less we will have to hear Tom Smith talk all his doom and gloom.

One last thing Roberta wanted me to mention and I'll just blurt it out because I'm not very good at asking people for money. We would appreciate if you could get your pledge forms back as soon as possible after they are received. This helps with our planning and forecasting for the year. Please reach out if there are any questions with the new structure.

I appreciate the faith put in me to be President and hope to continue to help guide Temple Emanu-El in a positive direction. See you all soon.

**Andy Parad**

## Notes from Sherry Barnes



L' hayim! To life, being vaccinated and getting outdoors!

I don't know about you, but I feel like you do when you open your windows on the first warm spring day after a long winter! It has been an interesting transition back into

life. I went from being petrified to be out with people, to getting vaccinated and feeling less stressed out, to love being outside again, meeting people, and feeling alive. I'm thoroughly enjoying my summer freedom and the low numbers Connecticut has at the moment. Thanks to those low numbers, I'm writing this in June,

we are just beginning "in person", Shabbat Evening Services in the sanctuary beginning this Friday. I'm looking forward to hearing your beautiful voices fill the space! I also loved our outdoor Shabbat Service, it was wonderful. I know that we are not totally back to "normal", but it feels like we are close.

I'm excited to announce that we will have Lay Led Shabbat Services in July and August. So, I'm putting out the call for people to help lead them. I'm always happy to help in any way you need. If you are interested, please contact me for dates and times at

CONTINUED ON PAGE 3

## Notes from Sherry Barnes -- CONTINUED FROM PAGE 2

[shirie3860@aol.com](mailto:shirie3860@aol.com) or 860-443-3005. Shabbat Summer Services will be at 7:00 pm.

If you are vaccinated and interested in singing in the choir for the High Holy Days, I'd love to hear from you. I'm always looking for male voices, tenors, and altos. If you are a soprano, that's fine too. Rehearsals will be starting in July, possibly Thursday, July 8, or July 15, at 7:00 pm.

I hope you will join us when Or Zohar visits at the beginning of July. It is always a pleasure to have him visit, share music, and hear news from the Galilee. On July 17, we will have our Shabbat Walk at Bluff Point, and

hopefully some other outdoor activities over the summer. Make sure to check the Temple Calendar.

I wish you an enjoyable summer after such a long year of being cooped up. I know that I will be looking for lots of outdoor concerts, walks, and vegan ice cream! Be safe, get vaccinated if possible, and hope to see you at summer services or maybe bump into you around town.

B'shir,

**Sherry**

## Temple Emanu-El Religious School (TERS)

Imagine a Hebrew School where kids don't want to miss a day. They come in with a smile and leave humming a Hebrew song. Walking through the halls, you can hear the sounds of lively discussion, of singing, laughter and prayer. Imagine a child who feels the warmth and spirit of Judaism. Imagine the pride of his/her parents.

Temple Emanu-El Religious School is excited to welcome students and families back into the school for the 2021/2022 school year. We are all excited to have students return to our classrooms and hallways filling them with energy and enthusiasm for learning. Over the past year TERS has shown strength, cohesiveness and the flexibility to adjust to the many challenges of Covid-19. Although the circumstances of the past year could have broken us apart and tore us down, instead in many ways it brought us closer and made our religious school community stronger. Through our family's commitment to their children's Jewish education, Armi's and Jennifer's creativity and vision and the dedication of our teachers,

our students maintained a sense of community and connection during a stressful and uncertain time. We were able to continue to offer fun, relevant lessons and activities about Jewish holidays, Jewish values and how to live them, Torah stories, music and movement, and Hebrew learning.

This will be a new and exciting year as I step into the role of Director. I am thrilled to have the opportunity to help shape and fulfill the mission of our religious school -- to inspire our students to develop a Reform Jewish identity and a lifelong connection to the Jewish community. While the children are enjoying summer break, I will be hard at work preparing for the 5782 school year. Please return your child's religious school registration to the main office along with your Temple membership pledge forms as soon as you receive them.

The first day at TERS will be Sunday, September 12. We look forward to a fantastic year ahead.

**Rachel O'Brien**

**Look for your TERS registration packet in the mail  
& return it as soon as possible.**

**First day of religious school will be  
Sunday, September 12 at 9:30 AM.**

## SISTERHOOD -- Gail Weber & Merrill Mazzella, Co-Presidents

Dear Sisterhood Friends,

I am writing this article the morning after our End of Year Event. After 15 months, the Sisterhood ladies were able to gather in person. **We had 21 members join us at McCook Park in Niantic on a beautiful evening overlooking the water.** There was no planned agenda as we knew everyone just wanted time to catch up with their friends while enjoying their picnic dinner. As we looked around, all you saw were smiling faces. It was wonderful and as we have all come to realize, it is the little things that have become so important.

We had a busy year, despite the pandemic. You just need to glance at our end of year report to see how many different activities Sisterhood has hosted (and we love doing it).

Please mark your calendars for **our next book club meeting which will be on Wed Sept 1 at 7:00pm. The book is called "Here All Along – Finding Meaning, Spirituality and a Deeper Connection to Life – in Judaism" by Sarah Hurwitz** who I heard speak at the WRJ convention. She has a very impressive background. She was the speechwriter for Hillary Clinton and President

Barack Obama.

Then 3 weeks later, you can tune into Zoom for a Conversation with **Sarah Hurwitz** and hear her talk about her book. This event is on **Thurs, Sept 23 at 7:00pm** and free to sponsoring Sisterhoods, which includes us. It should be very enlightening, and we hope you can join us.

We are happy to announce that we put out a call for a chairperson or persons for the very successful Mishlot Manot fundraiser and Barbara Wolfe and Janine Sitko

volunteered to work together on it. Thank you so much!

Many thanks to the wonderful group of ladies who serve on the Sisterhood board and give an amazing amount of their time and expertise to make things happen.

My co-president Merrill Mazzella has been great fun to work with over the past two years. We were a great team and I loved working with you, Merrill. She is stepping down as "co" but will remain on the board and concentrate on programming. Merrill and I would like to thank: Caren Linden, our treasurer; Sue Fornara, who designs all our flyers and updates the temple website; Susan Hausmann who runs the gift shop, and this year created a website so we could all continue to shop, Emily Lerner, our corresponding secretary; Cecile Feldman, who organizes our book club and Barbara Senges who helped with a million different things including organizing our successful Trivia Night and who stepped up to be co-president with me for the coming year. I'm looking forward to working with you, Barbara, just like we did over 15 years ago! And thanks to Eileen Shapiro, whose title is recording secretary and also organized our beautiful Shabbat service in May. A heartfelt thank you to all of you, from us, for your dedication and hard work.

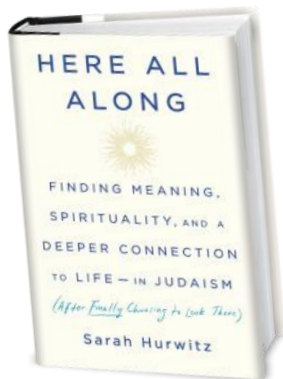
It has been an unusual and difficult year filled with many challenges, but we got through it, and we are all looking forward to happier times that feel more like the norm. Here's to a relaxing and fun summer. If you have suggestions for a program, please let us know as we will be working on our calendar over the next few weeks.

**Gail Weber & Merrill Mazzella**

Sisterhood Co-Presidents

### Temple Emanu-El Gift Shop:

During the Summer the gift shop does not have regular hours, but you can always shop through the website. It is easy and convenient. You can access it by going to the Temple website ([tewaterford.org](http://tewaterford.org)) and clicking the image for the Judaica Shop. Please contact Susan Hausmann at [Judaicashop@tewaterford.org](mailto:Judaicashop@tewaterford.org) for orders or questions.



## SISTERHOOD -- Enjoying Year End Picnic at McCook Park



## Mazel Tov to . .

**Susan Cramer**  
on the marriage of her daughter  
**Erica Cramer to Bryan Willett.**  
They were married on May 23, 2021.



## Condolences to . .

**Barry Greenhalgh**  
on the passing of his wife,  
**Susan Greenhalgh**

**Shirley Goldblatt**  
on the passing of her son,  
**Aaron Marc Goldblatt**



**Debra Eichler Elliot**  
on the passing of her aunt,  
**Catherine Eichler Erfurt**

## Religious Practices



Please join us at **Bluff Point on July 17 at 9:30 am** for a celebration of Shabbat. The Religious Practices committee will provide a picnic breakfast with coffee (of course), lox and bagels and the fixings, fruit, etc. We are planning to have some

activities in the picnic area which is accessible to the parking lot. We will also take a leisurely walk to the bluff (about 1 mile, slightly uphill) for additional singing and Shabbat contemplations. Please bring a comfortable lawn chair to best appreciate the scenery at the picnic area! We are looking forward to a memorable gathering.

We are also considering another outdoor event, yet to be determined, this summer. If you know of other special outdoor spaces or thoughts about other events you would like to have, please contact me, Sherry, Rabbi Marc or Roberta and we will be delighted to pursue your ideas.



## SOCIAL ACTION

The pandemic seems to be winding down. But it is important that everyone remain vigilant, and not let their guard down. If you can be vaccinated and haven't done so yet, please do so and do it soon. Take nothing for granted. But over the past month or two, the number of new cases and hospitalizations has gone down significantly. And people everywhere are coming out of hibernation in large numbers. There are and will be scars and challenges here, in Israel and around the world. And Social Action at Temple Emanu-El continues to have a place, now, and perhaps more than ever.

It's time to pick up and put together the pieces to determine where the efforts of the Social Action Committee can do the most good. Our work at the New London Meals Center never stopped, but was handled in a slightly different way. Our work at Habitat is ready to resume. The pandemic caused much of the building at Habitat to slow down or stop. The result is that Habitat has more sites/homes than ever to build and needs a large number of people to pitch in. More importantly, what Social Action at the Temple needs most is fresh ideas and fresh membership to reinvigorate Social Action work at the Temple. **We need to meet.**

It was over a month ago. I was riding my bicycle with friends in Hamden along a bicycle/foot trail. We were almost done and we got off the trail onto a downhill and very treacherous stretch of road. The pavement was rocky and sandy and bumpy. I lost control of my bike, flew over the handlebars and landed head first, unconscious on the pavement. The next thing I knew I was in Yale New Haven Hospital. Thank goodness for my helmet. Thank goodness for medical and rehab staff. Thank goodness for family and friends. More than three weeks later I was home and I continue to rehabilitate. I tell this story because as I was recovering, I had two realizations. First, I realized that at this time in my

life I am a person who needs help more than I am able to give help. Second, I realized that in countless con-

texts there are millions of me's out there. Social Action at the Temple needs to address the enormous number of people in many contexts who are in need of help. We need to identify those people and/or issues in our midst and try to, in a small yet important way, to make some of those needs disappear. Doing Mitzvahs is a win/win for those being helped, and for those who are helping. **We need to meet.**

Social Action at the Temple has historically focused

on the needs of Temple members, the needs of the New London area community, the needs in this Country and the needs of Israel. That's so much focus that it becomes unfocused. **We need to meet.** I propose trying to meet on **Sunday, June 25** and **if not then, sometime in mid to late July**, and if not then a Sunday in September. **Sooner rather than later should be our guide.** Do only what's possible should be another guide. But whenever we meet we need new people and we need fresh ideas about our mission.

Finally, for well over a year, I have been saying that I no longer should or can be the Chairperson of the Social Action Committee. I will not stop being the chair of Social Action until there is someone to take my place. So please join us when we next meet and please consider leading us.

**Marty Zeldis**



## Events & Service Schedule

Zoom Links can be found on the Temple Website Calendar for events and services.

[www.tewaterford.org](http://www.tewaterford.org)

July 2	Fri.	Shabbat Service indoors and on zoom	7:00 P.M.
July 6	Tues.	Discussion with Rabbi Or Zohar about efforts he and others are making toward a Jewish-Arab Shared Society in the Galilee	7:00 P.M.
July 7	Wed.	Bonfire, Sing, Roast Marshmallows at Guthrie Beach in New London with our guest Rabbi Or Zohar from the Galilee	7:00 P.M.
July 9	Fri.	Shabbat Service indoors and on zoom Howard Ilson Award Presentation	7:00 P.M.
July 12	Mon.	Please return Membership Pledges and Religious School forms to the temple office	
July 14	Wed.	Temple Emanu-El Board of Trustees Meeting	7:30 P.M.
July 16	Fri.	Shabbat Service indoors and on zoom	7:00 P.M.
July 17	Sat	Bluff Point Picnic Breakfast, Leisurely Walk, Shabbat Song and contemplations	9:30 A.M.
July 23	Fri.	Shabbat Service indoors and on zoom	7:00 P.M.
July 30	Fri.	Shabbat Service indoors and on zoom	7:00 P.M.
July 31	Sat.	Shabbat Morning Service	10:00 A.M.
August 6	Fri.	Shabbat Service indoors and on zoom	7:00 P.M.
August 13	Fri.	Shabbat Service indoors and on zoom	7:00 P.M.
August 20	Fri.	Shabbat Service indoors and on zoom	7:00 P.M.
August 27	Fri.	Shabbat Service indoors and on zoom	7:00 P.M.

Watch you weekly e-mails for additional Summer Events which are in planning stages.



## JACK HAYNES- REGAN KAYE - HANNAH LINDER - AMANDA ROWE

### 2021 Recipients of Rabbi Rosenberg Tikkun Olam Scholarship Award

The Rabbi Rosenberg Tikkun Olam Scholarship Award Committee has selected **Jack Haynes, Regan Kaye, Hannah Linder** and **Amanda Rowe** as this year's honorees. Since its inception in 2016, the Award Committee has only twice selected multiple recipients of the Scholarship Award. This year's honorees are all so deserving, that the committee was unable to choose from these four amazing graduates who each epitomize the meaning of Tikkun Olam! It certainly can be said about this group of young people that, "The apple doesn't fall far from the tree". Their parents, all serving Temple Emanu-El and the Jewish community for many years, have served as the ultimate role models for their children.

**Jack Haynes is the son of Rebecca and Michael Haynes of Niantic.** In his application essay, Jack states, "The

Temple community has been and always will be a very important part of my life". Jack has contributed to Temple Emanu-El and the Jewish community in a number of ways. He was a tutor and Faculty Assistant at the Religious School and

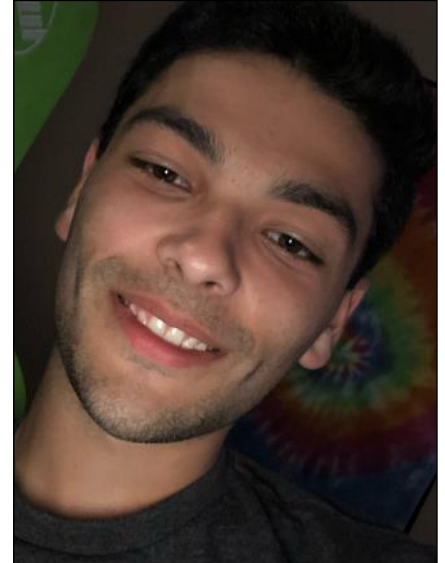


is a very active member of both the Junior Youth group and Yachad BBYO where he now serves as the VP of Communications. Jack also attended the Jewish Community High School.

In addition to the numerous service projects that he has participated in with BBYO, at East Lyme High School, Jack has served as president of the UNICEF Club, Vice President of the Chikumbuso Club, and is also an active member of the Leo's Club. Each of these activities that Jack has chosen to give his time to are involved in Tikkun Olam. Jack will be attending the University of Massachusetts in the fall, where he will be studying nursing.

**Regan Joshua Kaye is the son of Tammy and Rick Kaye of Old Lyme.** Regan believes that Temple Emanu-El is

his "home away from home". After attending Religious School, Regan continued with Confirmation, Jewish Community High School and still serves as a faculty assistant at the Religious School. He also helps out at the synagogue when-



ever his help is needed. "The Temple has given so much to me and helped form my Jewish identity that I wanted to give back".

Regan has also served the Jewish Community through the Jewish Federation and his relationships with the emissaries. Regan is also an active member of BBYO and has taken on the role of Vice President of Membership. In this role, he created an elaborate Power-Point presentation to encourage participation in Junior Youth Group and BBYO to the younger students in our community. In the community at large, Regan who has had a passion for Science Olympiad since 6th grade and is still involved at the high school level, is a volunteer coach at Old Lyme Middle School.

At Old Lyme High School, Regan is captain of the varsity tennis team and was selected as a member of the National Honor Society, where he is actively involved in community service. Regan will be attending Quinnipiac University in the fall, majoring in criminal justice. His future career goal is to work for a federal agency such as the FBI or Homeland Security.

CONTINUED ON PAGE 10

## JACK HAYNES- REGAN KAYE - HANNAH LINDER - AMANDA ROWE

### 2021 Recipients of Rabbi Rosenberg Tikkun Olam Scholarship Award *Continued from page 9*

**Hannah Linder is the daughter of Deborah and Samuel Linder of Waterford.** Hannah's list of contributions and accomplishments is "extremely healthy". One wonders where she finds the time to do all that she is doing.

Hannah attended Temple Emanu-El Religious School starting in Grade 6, continued with Jewish Community High School and Confirmation, worked as a Faculty Assistant and this year served as the Youth Representative to the Temple Board. She has been an active member of BBYO for four years and has served on the Board for three years as Jewish Programmer, Head of Communications and this year as Chapter President. Through a BBYO In-

ternational Summer Program, Hannah spent time in Israel where she became involved with "Save a Child's Heart".

At Waterford High School, Hannah is a high honor's student and a member of the Science, Spanish, Art and National Honor societies. She has done 286 volunteer hours during her four years at Waterford high school. As a member of the Shoreline Leo's Club, Hannah has served as the chair of the Leo's Measles and Rubella campaign. Finally, Hannah is an advocate and "activist" for causes important to improve the world - climate change, mental health, Israel, and Black Lives Matter. In the fall, Hannah will be attending Brandeis University, majoring in Biology and minoring in Spanish. She hopes to become a pediatrician.

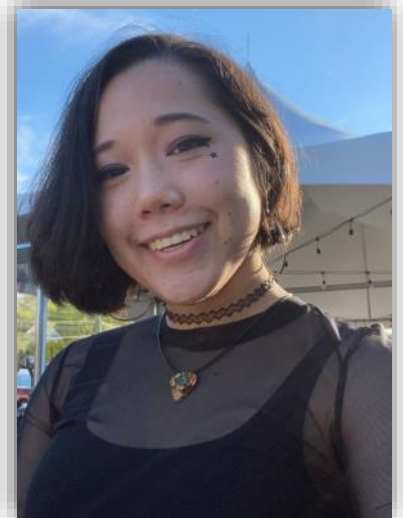


**Amanda Rowe is the daughter of Armi and Jonathan Rowe of Waterford.** Amanda Rowe has been a constant presence at

Temple Emanu-El since she was a toddler when she would sit in the front row of the synagogue every Friday night with her big brother Nathaniel (a former recipient of the Tikkun Olam Award). Like her parents and her brother, Amanda is a quiet

leader and is always there to volunteer when something needs to be done. Amanda is modest about her accomplishments but is a powerhouse at getting things done. Amanda graduated from the Jewish Community High School, was confirmed and has served as a Faculty Assistant in the Religious School for four years. She has also been an active member of BBYO for four years, serving as treasurer for two of the four years.

Amanda is a high honors student at Waterford High School and is a member of the National Honor Society and the National Art Honor Society. Amanda is also an extremely talented artist, writer, actor and singer. Amanda ended her essay with these words, "Overall, I try my best to be a positive force in the community, because I believe a little bit of positivity can go a long way." In the fall, Amanda is pursuing Digital Media Design with a focus on Game Design and Development at the Rochester Institute of Technology's Golisano School of Computing and Information Sciences.



Jack, Regan, Hannah and Amanda will be honored at a Shabbat Service on Friday, June 25 at 6:00 PM. Their names will be added in our place of honor on the plaque in the Temple Atrium. We wish them the very best as they begin their college careers in the fall.

## July Birthdays

Robbin Alpert  
Matthew Barnes  
Craig Bentley  
Melinda Blum  
Elizabeth Bochain  
Bill Bokoff  
Megan Dame  
Eric Diehl  
Jonah Feldman  
Julia Fischburg  
Mae Flax  
Iris Freeman  
Jared Freeman  
Sam Friedman  
Sophia Gipstein

Dr. Alissa Goldman Romano  
Cori Goldman Segal  
Sue Goldstein  
Rebecca Goldstein  
Gabe Grossman  
Meridith Hans  
Paul Kanfer  
Hali Keeler  
Louis Kronisch  
Arthur Lerner  
Judy Levine  
Robert Linden  
Robin Margolis Silsby  
Jacqueline Mazza

Jennifer Anne Michalove  
Jacoby Parad  
Armi Rowe  
Dianne Rubin  
Madeline Sayet  
Donna Schneider  
Jane Schnur  
Charles Seeman  
Chuck Seeman  
Bill Seeman  
William Seeman  
Rebecca Segal  
Mary Seidner  
Libby Seidner  
Veronica (Vee) Sherman

Matthew Shulman  
Janine Sitko  
Lauren Stavropoulos  
Lois Steinman  
Samantha Venooker  
Ella Jordyn Venooker  
Grace O. Walz  
Claire Warren  
Gail Wildstein  
Martin  
Zeldis  
Linus Zelken  
Lori Zelvin



## July

### Anniversaries

Paul and Monica  
Goldstein  
Jay and Patricia Hans  
Peter and Lisa Marcus  
Edward and Mimi Perl  
Harvey and Michele  
Snitkin  
Jay and Julie Snoke  
Scott and Barbara Wolfe



#### July 2

Miriam Bloom  
Elizabeth M. Bochain  
Janet Bruck  
Sylvia Fischburg Eisenberg  
Anatoly Fishman  
Jack Ginsburg  
Gunther Goldman  
Marion Gottfried  
Sarah HytoneL  
Norman Kozek

Oscar Panikoff  
Nathan Rappoport  
P. Joseph Reinhard  
Fannie Rosefeldt  
Marie Rouquette  
Joseph Vail  
Bitzalel Ben Abraham  
Susan Zechman

#### July 9

Louis Atkind  
Herbert Boehner  
Thomas Cherry  
Sarah Chevan  
Michael Comer  
Hans Einhellig  
Jonathan Fox  
Mary Jane Helveston  
Ella Levine  
Mina Liberman  
Samuel Penstein  
Jeannette Rosenstein  
Bessie Snitkin  
Brian Archer Thorp  
Alexander Moron  
Wessel

#### July 16

Meta Altman

## July Yahrzeits

Sol Brown  
Edna Epstein  
David Feldman  
Rose Gordon  
William Greenhalgh  
Enid Lesser  
Sarah Mazur  
Frances Ofstein  
Harry Ogulnick  
Pearl Parker  
Barbara Rubin  
Fay Rubin  
Jacob Snitman

#### July 23

Joseph Abrams  
Max Barnett  
Max Berns  
Irma DeBruyn  
Samuel Diamond  
Benjamin Gordon  
William Gordon  
Stanley Jacobson  
Rabbi Peter Knobel  
Yetta Sechter Millstein  
Jerry Moynihan  
Wade Nelson  
Dr. Solomon Prokesch  
Muriel Schneider

Melvin Snitman  
Marjorie Thomas  
Dorothy West  
Irving Allan Wildstein  
Solomon Wilkomer  
Joseph Ziegler

#### July 30

Etta Andelman  
Michael Atkind  
Philip BettenL  
Laura Bor  
Arthur Camassar  
Joseph Eisenberg  
Morris Epstein  
Alan Freeman  
Lawrence Grayson  
Howard Ilson  
Fay Kracke  
Irene Levy  
Abraham Pastel  
Murray Perl  
Maurice Rosenstein  
Betty Silverman  
Jodie Gorin Stewart  
Henry Sutel  
Harry Tulman  
John Vogel

## August Birthdays

Brian Alpert  
Daniel Arenson  
Shelley Arenson  
Brian Blaise  
Danielle Blaise  
Kevin Carlow  
Margaret Church  
Elissa DeBruyn  
Leonard Epstein  
Louise Feldman Baskey  
Kathleen Flax

David Freedman  
Donna Goldman  
Steve Goldstein  
Hannah Goldstein  
Gabriel Grossman  
Max Grossman  
Eleanor Hoffman  
Thea Kallan Johnson  
Emmerson Kaye  
Gerry Keeler  
Pamela Kilbey-Fox  
Lauren Kirschblum  
Jordan Clark Levin  
David Levine  
Beth Linden

Anne Luner  
Alan Luner  
Kathy Michalove  
Mimi Perl  
Shoshana Phillips  
Stephen Piotrkowski  
Hunter Rock  
Karen Rosenberg  
Rachel Sayet  
Talia Schaperow  
Ellen Seeman  
Brett Seeman  
Jake Sheriff  
Leah Shiling  
Adriana Shiling

Todd Siegel  
Jamie Stavropoulos  
Donald Steinman  
Sunny Steinway  
Andrew Venooker  
Michael Evan Weber  
Aaron Scott Weber  
Shelley Weiss  
Sam Winograd  
Rebecca  
Woodward  
Jennifer  
Zettler  
Debra  
Ziegler



## August Anniversaries

Michael and Linda Barnett  
Michael and Florence  
Betten  
Brian and Marcie Blaise  
Howard and Marcia  
Brensilver  
Thomas Smith and Irene  
Brickman Smith  
Mark and Marianne  
DeBruyn  
Bruce and Lori Goldstein  
Alan and Patricia Gruber  
Geoff and Susan  
Hausmann  
Robert and Eleanor  
Hoffman  
Alan and Norma  
Hollandersky  
Joel and Avery Holwitt  
Peter and Barbara Kallan  
Philip and Ethel Krasney  
Roark and Judy Levine  
Anthony and Jacqueline  
Mazza  
Harvey and Leslie  
Orenstein  
Stephen and Lois Panikoff  
Chris and Jennifer Rock  
Marvin and Jane Schnur  
Steve and Gail Weber  
Joel and Gail Wildstein

## August Yahrzeits

### August 6

Leah Goldberg Asen  
Morton Klieback  
Arthur Krieger  
Claire Perry  
Julius Webman  
Daniel Zager  
Eileen Iorillo  
Maude Harriet  
Dorothy Friedman  
Yetta Sedransky  
Rebecca Merims  
Stoner

### August 13

Mollie Azaroff  
Rose Baker  
Rose Barnett  
Harvey Bloom  
Julius Cooper  
Rose Feigenbaum  
Abraham Gottfried  
Isadore Gottfried  
Nathan Greenhouse  
Barbara Hausmann  
Shirley Hendel  
Warren Hollandersky  
Bessie Kline  
Emily Lasser

Barney Millstein  
Lottie Rodkin  
Beatrice Rovner  
Solomon Schaferman  
Miriam Toplosky  
Harry Winterholer

### August 20

Joseph AbrahamsL  
Richard Blaise  
Harry Chevan  
Charles Church  
Sarah Davidson  
Wilkomer  
Nicholas Doukas  
Belle Eidensohn  
Diana Fischburg  
Louis Galvin  
Dorothy Goldman  
Milton Goldsmith  
Irving Goodstein  
Libby Isaac  
Naomi Kerwin  
Dorothy Levine  
Ruth O'Brien  
Howard E. Proper  
Lamchick  
Laura Richardson  
Leonard F. Rosen

Harry Ruck  
Mildred Schiller  
Orrin Silverberg  
Sharon Spiegel  
Bernice Bunny Stern  
Jeanne Swatzburg  
Paul Trzepacz  
Skip Wagner  
Stuart Wickson

### August 27

Eleanor Baker  
Frederick Eichler  
Ada Engelman  
Dr. Arnold Feldman  
Sol Gordon  
Morton Kallan  
Bella Kil  
Angela Klieback  
Roz Leader  
Sherman Marcus  
Sherman Marcus  
Fred Michalove  
Ascuncion Reyes  
Marshall Rubin  
Harold Rutman  
Mark Sayet  
Samuel Shapiro  
Samuel Wertheim

## ***We are eternally thankful for the support of those below. . .***

### **Aaron and Pearl Parker Religious School Fund**

Mr. & Mrs. Ronald Elkin and Family

---in loving memory of Aaron Parker on his yahrzeit

### **Cantor's Fund**

Florence Betten

---in memory of Pat Sher's mother, Germaine Ruderman

Lois and Don Steinman

---in memory of Donald Bendick, father of Sean Bendick

Mark and Marianne Debruyn

---in appreciation of Sherry Barnes' patience and teaching abilities

### **Craig Blumsack Fund**

Aline and Matthew Shulman

---in loving memory of Alex J-C Shulman on his yahrzeit

### **Essential Services Fund**

Adam Kaufman

Rebecca Woodward

Abraham and Sandra Fisher

---wishing good health to Ethel Chatkin

---wishing good health to Stephen Mann

---condolences to the Sher family on the passing of Pat's mother, Germaine Ruderman

---Mazel Tov to Roberta Reisner-Winograd and Sam Winograd on the marriage of their son, Yitzchak to Amanda Wycoff

Caren and Bob Linden

---in honor of Dara Weber's Marriage to Jeff Ritterband

---in honor of Yitzchak Winograd's marriage to Amanda Wycoff

Caren and Bob Linden & Family

---in loving memory of Dr. Irving Fox on his yahrzeit

Carleen and John Nelson

---in memory of my dear friend, Claudia Shapiro

Iris and Gary Freeman

---in loving memory of my grandmother, Ida Resnick

---condolences to the Sher family on the passing of Pat's mother, Germaine Ruderman

---condolences to the Bendick Family on the passing of Sean's father, Donald Bendick

Karen Dinsfriend

---in memory of Louis Dinsfriend on his yahrzeit

Leslie Spees

---in loving memory of Larry Spees on his yahrzeit

Lois and Stephen Kaplan

---condolences to the Bendick Family on the passing of Sean's father, Donald Bendick

---condolences to Lester Shapiro on the passing of Claudia Shapiro

Martin and Joanna Lazarus

---in loving memory of Warren Young on his yahrzeit

Neil Willins, Bethesda Lodge No. 30 I O O F

---to continue good work

Panikoff and Kaplan Family

---in loving memory of Evelyn Kiki Kaplan, our beloved mother, on her yahrzeit

Susan and Ed Schwartz

---in memory of Eleanor Ostrow's son, Ricky Ostrow

The Kil and Freeman Families

---in loving memory of Boris Kil on his yahrzeit

The Kil Family

---in loving memory of Stuart Glenn on his yahrzeit

### **Goldsmith-Kallan Fund**

Peter and Barbara Kallan

---in loving memory of Terri Goldsmith on her birthday

Peter and Barbara Kallan

---in memory of Don Bendick

---mazel tov to Roberta and Sam Winograd on the marriage of their son Yitzchak to Amanda Wycoff

### **Isaaca Siegel Landscaping Fund**

Barry and Cecile Feldman

---in honor of Yitzchak Winograd's marriage to Amanda Wycoff

---condolences to the Bendick Family on the passing of Sean's father, Donald Bendick

---condolences to the Sher family on the passing of Pat's mother, Germaine Ruderman

---condolences to Barry Greenhalgh on the passing of his wife, Susan

### **Mitzvah Fund**

Edith Ziegler

---in loving memory of Sarah Ziegler on her yahrzeit

Hali and Gerry Keeler

---with sympathy to Barry Greenhalgh on the passing of his wife, Susan

CONTINUED ON PAGE 14

***Please make checks payable to Temple Emanu-El and remit to PO Box 288, Waterford, CT 06385***

## ***We are eternally thankful for the support of those below. . .***

CONTINUED FROM PAGE 13

Leslie and Harvey Orenstein & family  
-- in loving memory of Alvin "Sonny" Flitt on his  
yahrzeit  
Shoshanna Weiss  
-- in loving memory of Louis Weiss on his yahrzeit

### **Rabbi's Discretionary Fund**

Barry and Stephanie Thorp  
-- in loving memory of Anita Thorp on her yahrzeit  
Bruce and Lori Goldstein  
-- in appreciation of Rabbi Marc's time and caring in  
performing our daughter Andrea Goldstein's  
marriage to James Anouna; Rabbi Marc turned rain  
into sunshine!

Judi Glickstein

---in memory of Germaine Ruderman, Patricia Sher's  
mother and Alvin's mother in-law  
---in memory of Don Bendick  
Shirley Goldblatt  
---in loving memory of Helen Epstein on her yahrzeit  
Stanley and Karen Bloustine  
---in memory of Don Bendick  
---in memory of Germaine Ruderman  
---mazal tov to all 2021 High School Graduates



## ***Adam G. Sheriff - Bar Mitzvah, Saturday, July 31***

Adam George Sheriff will become a Bar Mitzvah on Saturday July 31, 2021, assisting Rabbi Marc Ekstrand and Cantorial Soloist Sherry Barnes in leading the morning service.

Adam is the son of Chuck and Alisa Sheriff of East Lyme. He is the grandson of Gabrielle Levinson of Westport. He recently graduated from East Lyme Middle School where he received faculty commendations.

Adam has attended Religious School at Temple Emanuel since second grade. He has enjoyed contributing to various community service projects with the temple as well as participating in events sponsored by the Jewish Federation of Eastern CT Junior Youth Group.

In addition to his parents, Adam lives with his younger brother Jake who just completed sixth grade. They all ask you to join them in wishing Adam Mazel Tov on his special day.





**RE/MAX<sup>®</sup>  
ON THE BAY**

**FOR ALL YOUR  
REAL ESTATE NEEDS**

Direct: 860-443-4400 Cell: 860-625-5255  
Email: [Geoff@CallTheHouseMan.com](mailto:Geoff@CallTheHouseMan.com)  
Website: [www.CallTheHouseman.com](http://www.CallTheHouseman.com)  
Blog: [CTHouseMan.com](http://CTHouseMan.com)

**THE City NEVER SLEEPS!**

MYWHALINGCITY.COM • OPEN 24/7  
BROAD & COLMAN ST, NEW LONDON • 860.443.8361

MY WHALING City

860-443-CITY (2487)

**PsychologyCT.com**

**Schaperow Psychology & Associates:**  
Thorough diagnostic assessments; psychological testing; individual, marital, & family therapy.

**Drug & Alcohol Treatment:**  
Clinicians that specialize in drug & alcohol treatment.

**And:**  
**Cognitive Behavioral Therapy (CBT) Center:**  
Evidence-based CBT to improve mental health, and decrease stress for certain physical illnesses.  
860-447-2047 / [PsychologyCenterOffice@gmail.com](mailto:PsychologyCenterOffice@gmail.com)

**NEW LONDON  
SELF-STORAGE**

**CLIMATE CONTROLLED**

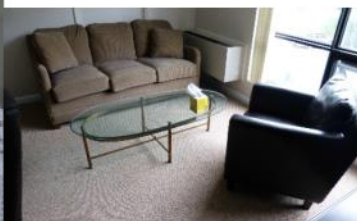
**860-442-0008**

[www.NLSelfStorage.com](http://www.NLSelfStorage.com)

*Conveniently Located Just Over  
the Waterford Town Line  
at 960 Bank St., N.L. behind Sign "A" Rama*

- Brand New, Clean Facility
- 24/7 Video Surveillance
- Secure Gate with Keypad Entry
- Month to Month Rentals
- Free "We'll Pick It Up" Service
- Locally Owned & Managed
- 200+ Units - 6 Sizes, up to 10'4" ht.
- Climate Controlled Automobile Bays
- Boxes, Locks, Packing Supplies

Psychology CT LLC is **seeking renters**, as we have **beautiful offices available** in Waterford. These offices are perfect for professionals (e.g., therapists, massage therapists, small practice attorneys & accountants, certain kinds of physicians, etc.), especially those that don't need a reception area, but may still benefit from a waiting area. Please see <https://sites.google.com/site/schaperowpsychology/office> for details, or email [psychologycenteroffice@gmail.com](mailto:psychologycenteroffice@gmail.com) for more information. PsychologyCT.com



TEMPLE EMANU-EL  
PO BOX 288  
WATERFORD, CT 06385

Please use PO BOX 288 WATERFORD, CT 06385  
when mailing material to the temple

Non-Profit  
Organization  
U.S. Postage PAID  
New London, CT  
06320  
Permit #480

**Deadline for September 2021 Bulletin is Friday, August 13**

Email your articles to Roberta at [office@tewaterford.org](mailto:office@tewaterford.org)

CHANGE SERVICE REQUESTED

## Our Leadership

**Rabbi** / Marc Ekstrand / [rabbi@tewaterford.org](mailto:rabbi@tewaterford.org)  
**Rabbi Emeritus** / Aaron Rosenberg / [arloveskr@aol.com](mailto:arloveskr@aol.com)  
**Cantorial Soloist** / Sherry Barnes /  
[cantorialsoloist@tewaterford.org](mailto:cantorialsoloist@tewaterford.org)  
**President** / Andy Parad / [president@tewaterford.org](mailto:president@tewaterford.org)  
**1<sup>st</sup> Vice President** /  
**VP of Building and Grounds** / Russell Sheikowitz /  
[buildingsgrounds@tewaterford.org](mailto:buildingsgrounds@tewaterford.org)  
**VP of Religious Practices** / Claire Warren  
**Treasurer** / Thomas Smith / [treasurer@tewaterford.org](mailto:treasurer@tewaterford.org)  
**Vice Treasurer** / Bruce Goldstein  
**Recording Secretary** / Marcia Reinhard  
**Corresponding Secretary** / Deborah Linder  
**Immediate Past President** / Jo-el Fernandez  
[pastpresident@tewaterford.org](mailto:pastpresident@tewaterford.org)  
**3 Year Trustees:** Michael Barnett, Michele Caton, Amy Orce,  
one unfilled  
**2 Year Trustees:** Robbin Alpert, Susan Cramer, Amy Perry,  
Shoshana Weiss  
**1 Year Trustees:** John Murphy, Irene Brickman-Smith,  
Gail Weber, Scott Wolfe

**Membership Co-Chairs** /  
**Social Action Chair** / Marty Zeldis  
**Sisterhood** / Gail Weber & Barbara Senges/  
[sisterhood@tewaterford.org](mailto:sisterhood@tewaterford.org)  
**Gift Shop** / Susan Hausmann / [judaicashop@tewaterford.org](mailto:judaicashop@tewaterford.org)  
**Brotherhood** / [brotherhood@tewaterford.org](mailto:brotherhood@tewaterford.org)  
**Kitchen Committee Chair** / Edee Smith  
**Religious School Administrator** / Rachel O'Brien /  
[religiousschool@tewaterford.org](mailto:religiousschool@tewaterford.org)  
**Office Administrator** / Roberta Reisner-Winograd /  
[office@tewaterford.org](mailto:office@tewaterford.org)  
**Webmaster** / Aaron Kaplan / [webmaster2@tewaterford.org](mailto:webmaster2@tewaterford.org)  
**Custodian** / Don Kasper  
**Bulletin Editor** / Mimi Perl

**Location:** 29 Dayton Road, Waterford, CT 06385

**Mailing Address:** PO Box 288, Waterford, CT 06385

Office: **860-443-3005**

Religious School: **860-443-3005**

Website: [www.tewaterford.org](http://www.tewaterford.org)