



## Rabbi's Message - Marc Ekstrand

Friends,

I had hoped that we would come together for the High Holy Days in person this year. Yet, almost a year and a half into the pandemic, it is not over yet. We are approaching our second Covid High Holy Days, still needing to take precautions to keep our community safe. Jewish values have guided our decision-making from the beginning – to save one life is as if to save an entire world (BT Sanhedrin 37a).

The High Holy Days are always challenging because we have our largest crowds of the year. Large indoor gatherings bring with them the potential to unwittingly spread the Covid-19 virus. The re-entry and religious practices committees worked hard to plan services that could be attended safely in person. We hoped that the early High Holy Days would allow us to have these sacred gatherings before any fall resurgence. Unfortunately, the rate of Covid-19 infections has risen sharply in the past few weeks in New London County. As you are probably aware, in Groton and New London, mask mandates have been restored. We now also understand that the efficacy of our vaccines appears to wane. Booster shots are now recommended, but none of us will have them in time for the High Holy Days. These factors and more went into a decision by the re-entry committee that we cannot in good conscience proceed with indoor gatherings at the Temple for the High Holy Days. We are not alone. Our friends at Congregation Beth El and Congregation B'nai Israel have made similar difficult decisions. Additionally, a survey of other Reform congregations in our region indicates that most are not planning indoor gatherings.

Our services for Rosh Hashanah evening and morning and Kol Nidrei and Yom Kippur morning will be virtual-only events. We hope that you will join us from your sacred space. In addition, we are moving forward with planning outdoor gatherings for both Rosh Hashanah and Yom Kippur. Read further for more details.

We have learned in the past year and a half that being on Zoom can be exhausting. Therefore, we are striving to keep every service to 90 minutes maximum. While our liturgy will

necessarily be abbreviated and my sermons concise, we intend to maintain the high spirituality of these Days of Awe.

I want to highlight to you **several significant changes to our typical HHD service schedule**. Refer to our website, mailing sent to your home, or this bulletin for the most up-to-date details.

**Rosh Hashanah Family Program and Tashlich** - 4:30 PM at Hole in the Wall Beach: Rosh Hashanah is the birthday of the world. We'll celebrate by making sand murals of our creation stories. Bring some pails and shovels and wear beach-friendly clothing. This program will lead directly into Tashlich when we symbolically cast our sins (bread crumbs) into the sound. We will conclude with a final blast of the Shofar – if you have your own Shofar, feel free to bring it.

**Yom Kippur Morning and Yizkor** – 10 AM virtual only. After a short intermission, Yizkor will follow the 10 AM morning service. Yizkor should begin around noon. An afternoon discussion with Andy Feinstein will follow Yizkor.

**Yom Kippur Family Program, Afternoon Service, and Neilah** – 5 PM at McCook Point Beach Bandshell. This creative, interactive program for all ages will combine elements of afternoon liturgy, themes from the Book of Jonah, and the closing service of Yom Kippur, Neilah. Bring your beach or camp chairs and blankets to stake out your place on the grass. Dress comfortably for the weather. At sunset by the sea, we will have a moving conclusion to the High Holy Days. Unfortunately, we will not have a congregational break-the-fast but feel free to bring something of your own or enjoy the many dining opportunities in Niantic.

L'shanah Tovah,

**Rabbi Marc**



## President's Message - Andy Parad

I write this toward the end of quite a busy summer as far as the Temple goes. With much help, we were able to clear out almost all of the Conex box in the parking lot, clean out and reorganize the religious school, and clean out and reorganize the kitchen. This was no small feat. Add to that the ambitious project of repainting the religious school which was way overdue. Clearing out the Conex box will save us about \$900 a year. Relying on volunteers to paint will save us about \$20,000. A huge thank you to everyone who helped with these projects. Doing things like this is what keeps the Temple going.

At our first Community Campus Update Zoom meeting we were able to pass on some details about the project and take some questions. We plan on having these brief updates every 2 months to keep people informed of what is going on.

The next evening at our Board meeting, the Board voted unanimously to proceed to the next step in the Community Campus process which is sending a rough draft of an Operating Agreement to a lawyer for professional revision and writing. There are many things that are yet to happen, this was just one of them along the way. There is still much to do, and plenty of opportunity for anyone who wants to be more involved in the project.

While keeping one eye on the Community Campus, the

Board has been keeping focused on our main mission, which is Temple Emanu-El. With that in mind, the Board has decided that we want to have more engaging activities. Beginning in the months after the High Holy days, you will start to notice fun activities that Board members are starting to plan. The idea was that Board members who are interested in a certain activity could come up with a Temple event. And maybe the spirit would catch on from there. We would encourage anyone and everyone to join in these activities. Some ideas we have discussed are: online card games, in person games, dinners, get-togethers, a puzzle club, a garden tour event, and several more. Some may end up being fundraisers, but the plan is for all of them to be fun. If there are any non-Board members who enjoy a certain activity and want to plan something, let myself or Roberta know. The more we have going on in and around the Temple the more we can develop a sense of community, even in these still distanced times.

Hope to see everyone at the High Holy Days, either in person or on Zoom.

**Andy**



## Notes from Sherry Barnes



L'shana tovah!

Today I pulled a book off my shelf called, Rosh Hashanah Readings, Inspiration, Information, Contemplation. Before opening a book like this one, that is filled with lots of inspirational readings, I like to set an intention. The intention I set was, What can I pull from the text on this page that might be missing from my preparation for the High Holy Days and how can I apply it to this new year? Then I let the book open where it may. The page that fell open was a short paragraph written by Rabbi Diane Cohen. Her topic was Hineini: Here I am! "Here I am",

means much more than just showing up, especially during the High Holy Days. Hineini means being fully present, body, mind, and spirit. Present in the moment, ready to do what needs to be done.

So how do we apply this to our preparation for the High Holy Days? Page 16 in Mishkan Hanefesh for Rosh Hashanah it says, "...bring the best of my energies to these High Holy Days, approaching this spiritual work with open heart and mind, sincerity, and sustained focus on the deep questions of this season: Who am I? How shall I live? Where have I fallen short or failed?". How do we apply it to the year ahead of us? It sounds like we can do it in much the same way.

CONTINUED ON PAGE 3

## Notes from Sherry Barnes -- CONTINUED FROM PAGE 2

Whenever there is a call for help, or a need, or volunteering, especially at Emanu-El, we are always in need of volunteers, we should show up, bringing the best of our energies, open heart, and mind, ready to give it our all by being fully present and engaged. I think I will write the word on index cards and put them in places where I will see them and remind myself to be fully present when I say, Hineini, here I am, ready to be fully present for You, Adonai, those around me, and myself.

I want to thank Rabbi Marc, Eileen Shapiro, Regina Magnus-Aryitay, Barbara Luftglass-Morea, Rabbi Aaron and Karen Rosenberg, Barry and Cecile Feldman, Barbara and Scott Wolfe, members of Sisterhood, and Armi and Jonathan Rowe, who answered the call for

Summer Service volunteers. I appreciated your help leading Summer Services and those who joined us in-person and on Zoom, our greeters, and especially our Zoom Crew! You made Shabbat extra special over the summer, inside and outside the walls of Temple Emanu-El.

L'shana tova u'mitukah! To a good and sweet year!

B'shir,

**Sherry**



## Temple Emanu-El Religious School (TERS) - Rachel Obrien

L'Shanah Tovah! Year 5782 is upon us. We hope that you and your families enjoyed your summer vacation time together. Welcome to all our new and returning teachers and faculty assistants! We thank you for dedicating your time toward the mitzvah of passing down knowledge and stories from Torah and the Jewish People to the next generation of learners. We look forward to embracing tradition while being open to creativity as we collectively provide for our students an engaging and fun-filled calendar of Hebrew and Judaic lessons, group activities and celebrations.

We have been busy all summer cleaning and revitalizing our school and making plans for our students' safe return to the religious school building. Special thanks to all those families who graciously volunteered their time this past month supporting the restoration efforts. Our time is so precious, yet many TERS families came out to help support us...you will be shocked by the school's transformation! I also want to thank Amy Orce who has stepped up to help assist me in making this coming school year another fabulous experience. Her support and dedication to TERS is greatly appreciated.

Our plan for the 2021/2022 school year is to have our children back in the building for full in-person learning. With this said, my mission is to ensure that our children are learning in a comfortable, safe environment. As the upcoming school year begins, we will continue to focus on keeping students safe. Since

the beginning of this pandemic, new information has emerged to guide safe in-person learning. The World Health Organization (WHO) and the Center for Disease Control and Prevention (CDC) has assured schools that opening their doors to in-person learning generally does not significantly increase community transmission, particularly when the guidance they have outlined is adhered to.

What that means for TERS families is that masks will be required to be worn when inside the building and physical distancing will be instituted to the greatest extent possible. We will also have sanitizing stations in place and the classrooms will be disinfected at the end of every school day, and we will also use the windows as much as possible to aid in ventilation. Please send your child dressed appropriately with this in mind. Layers are always best with a light sweater, sweatshirt or jacket on top.

Temple Emanu-El Religious School begins as a Sunday session on September 12 at 9:30 am to 12:00 pm for grades K-7. The first Wednesday session for grades 3-7 begins Wednesday, September 22 at 4:30 pm to 5:45 pm. The first religious school day for Pre-K students is Sunday, September 19 at 10:30 am to 12:00 pm.



CONTINUED ON PAGE 4



## Temple Emanu-El Religious School (TERS) - Rachel Obrien -- continued from page 3

**If you haven't already done so, please fill out your Temple pledge form and register your children for religious school as soon as possible.**

This year, our school will continue to use Shalom Learning's values-based curriculum and Hebrew program in grades K-7. This award-winning program was developed by a team of Jewish and secular educators and curriculum developers. Our school is among 120 partner synagogues making Jewish education more engaging and relevant for our students. The Shalom Learning values-based curriculum explores seven Jewish values and their relevance in our everyday lives. Students will learn to use Jewish culture, holidays, text, history, and traditions to make responsible decisions and build positive relationships. Using the Shalom Learning Hebrew program, we will teach your children to read Hebrew, chant prayers, and understand their meaning. This programming was a huge success last year in a remote-learning environment and since it was originally developed for in-person classroom learning, we are expecting even greater success with the curriculum this year.



For more information about Shalom Learning, go to [www.shalomlearning.org](http://www.shalomlearning.org). If you have questions about how our school is implementing the program please contact us at [religiousschool@tewaterford.org](mailto:religiousschool@tewaterford.org). We look forward to a wonderful new school year and a productive partnership with Shalom Learning.

### **Looking ahead...**

Please note on your calendar that we will be having Picnic in the Sukkah on Sunday, September 19th. On Friday, October 1st please join us as our youngest learners in Kitah Gan/ Aleph (Kindergarten/1st Grade) class are welcomed formally into their religious school education as Consecration celebrants during the Shir Shabbat service at 7:00 pm.

We appreciate everyone's patience and support over this past year. Once more please submit your child's registration as soon as possible.

Shana tovah u'metukah,

**Rachel**

## Sisterhood -- Gail Weber & Barbara Senges, Co-Presidents

### **Hi Ladies,**

Our Sisterhood board just held our planning meeting and are excited to get all our information out to you. We are still facing challenging times and have taken this into account when planning our programs. For now, events will take place either outdoors (without food) or on Zoom or even as a hybrid model.

**On the opening day of Religious school,** Sisterhood will have a table set up in the atrium so we can help welcome the moms and invite them to become Sisterhood members. As many of you know, Sisterhood is an extension of our temple and helps fund bar and bat mitzvah gifts, Confirmation gifts, religious school holiday celebrations and more. Everyone's support is so appreciated. And the best part is that we all have fun working together to get the job done. Please stop by our table and introduce yourself!

**Our Kick-off Membership event is a Trivia Event!** Everyone loved playing this on Zoom over the past year

and Barbara Senges, our co-president and Membership chair, is fabulous at putting these questions together. We are planning on a hybrid model for this event. Mark your calendar for Sunday, September 19 from 2:00-4:00pm at McCooks Point Park in Niantic or on Zoom. Check the flyer and your emails for more information. We would love to see you and welcome you back to Sisterhood. Annual dues are \$36.00 and we will be collecting dues that afternoon. Dues can also be mailed to Caren Linden, our treasurer, in advance.

**Sisterhood is open to all women of Temple Emanu-El as well as all Jewish women in southeastern Connecticut.** Feel free to invite your friends. We are always looking for new members.

**Our Sisterhood Book Club continues to be popular** and is chaired by Cecile Feldman who always provides us with interesting background information and very

CONTINUED ON PAGE 5

## Sisterhood -- Gail Weber & Barbara Senges, Co-Presidents - continued from page 4

lively discussions. Our first book club date is **Wednesday, September 1**



**at 7:00pm.** The book is called **“Here All Along- Finding Meaning, Spirituality, and a Deeper Connection to Life in Judaism (After Final-**

**ly Choosing to Look There)”** by Sarah Hurwitz, who was a speech writer for both President Barack Obama and First Lady Michelle Obama.

Then as a follow up to this book club discussion, our Sisterhood became a sponsor for a regional **Zoom discussion with Sarah Hurwitz on Thursday, September 23 at 7:00pm.** This program is free to all Sisterhood members. Sisterhood renewal letters will be mailed soon. Once you send in your dues, a link for registration to this event will be sent to you.

**On Thursday, November 18 at 7:00pm,** Sisterhood will host a **cooking class on Zoom** to help you get ready for both Thanksgiving and Chanukah. Check your emails for more information as we get closer.



Some other programs we discussed were a drawing class on Zoom, as well as a program in person at Smith Acres in Niantic in the spring.

If you have any suggestions or special talents, please let us know. It's always fun to try something new.

***The Sisterhood board wishes all of you a Happy, Healthy and Peaceful New Year!***



### Your Sisterhood Board – 2021-2022

Co-Presidents	Gail Weber & Barbara Senges
Membership	Barbara Senges
Programming	Merrill Mazzella
Treasurer	Caren Linden
Book Club	Cecile Feldman
Gift Shop	Susan Hausmann
Secretary	Eileen Shapiro
Religious School Liaison	Barbara Senges
Publicity	Sue Fornara

### Temple Emanu-El Gift Shop

I am excited to announce the reopening of the gift shop. The inventory is returning to the Temple and you can schedule a time during Religious School to browse or pick up some items. The website will still be active and updated, so to shop online go to

<https://judaicashop.wixsite.com/website>. Keep on browsing.

For those who haven't heard, **this is going to be my last year running the gift shop.** After a decade, I have decided to call it quits. Now is the opportunity for someone to step up and take over next July. **I have everything organized** and it is at the point that it is not a tremendous obligation. Please contact me at [judaicashop@tewaterford.org](mailto:judaicashop@tewaterford.org) if there is any interest or questions.



I look forward to seeing you.

**Susan Hausmann**



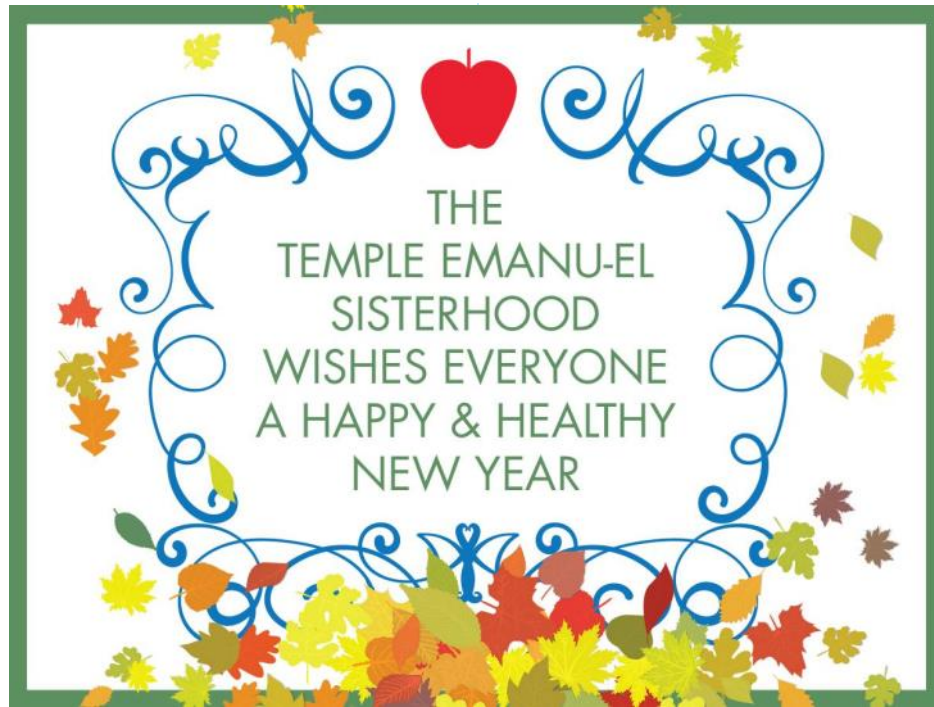
## COVID-19 Precautions

With the rise in COVID-19 cases, starting now:

In order to attend services or programs in the building, vaccination cards need to be on record in the Temple office. Please e-mail a copy of your card to [office@tewaterford.org](mailto:office@tewaterford.org) by **September 1**. Masks are required for all indoors.

Masks are required to be worn by all non-vaccinated individuals and recommended to be worn by all vaccinated individuals when attending Temple group functions outdoors.

*Thank you.*



Rabbi Aaron Rosenberg presented I-r Jack Haynes, Regan Kaye, Amanada Rowe, and Hannah Linder with the 2021 Tikun Olam award.



# Temple Emanuel-El Sisterhood 2021 Kickoff Membership Trivia Event



at the Tent in McCook Point Park in Niantic and on Zoom\*  
*Sunday, September 19th • 2:00pm – 4:00pm*



Please RSVP to Barbara Senges and indicate whether you will attend in person or on Zoom: [professeur38@me.com](mailto:professeur38@me.com) by Thursday, Sept. 16.

\* In case of inclement weather the Event will be held on Zoom only.

Sisterhood welcomes all Temple Emanu-El women and all Jewish women of Southeastern CT and the surrounding area for membership.

Annual dues of \$36.00 may be paid in advance or on the afternoon of the event.



Masks are required. Please wear a mask to this event, per CDC guidelines.

Upper lot parking may be limited as there could be another event in the park that afternoon. We recommend carpooling to the event or parking in the lower lot.



## Mazel Tov to . .

**Noah Shiling and Liang Zhao**

on the birth of their daughter

**Olivia Zhao Shiling**, born on August 9, 2021.

Proud grandparents are

**Claire Warren and David Shiling.**



## Condolences to . .

**Michael and Rachel**

**O'Brien and family**

on the passing of

Michael's father,

**Richard O'Brien**



**The Friedman Family**

on the passing of **Michael Friedman**

## Fundraising

**Shalom,**

May your coming new year be filled with love and understanding from your family, kindness from our community, understanding from your employer and the patience needed to carry on with our mission in our own Temple.

Fundraising this year will be a challenge with all that is on our plates including a variant of Covid-19 and boosters, yet we will strive to gather together so please try to attend upcoming events.

Please note that a postcard will be sent to save the date for the 2022 Annual Dinner Dance at Ocean Beach which is one of the Temple's major fundraisers.

Our Dine to Donate fundraiser will be with an online catering company Yosi Catering that will deliver a dinner to your home. Roberta in our Temple Office will email you a link to use with a code starting October 1st through December 31st and link to utilize when ordering catered delicious dinners through Yosi online and it will bring in 15% of the proceeds as a donation to the Temple Fundraiser Dine to Donate. All information will be emailed to you. Remember to try it out so we will receive 15 % donation from your purchase.

There is our important Raffle Prize Event coming up soon after the High Holidays - Please try to purchase your ticket as soon as you know they are on sale; there are limited number of tickets. Don't miss out on this important fundraising opportunity.

Finally, there is our Purim Mishloach Manot Bags fundraiser that our Sisterhood will head up this year and will be seeking helpers to bake and assemble. Just a thought that we may ask members to pick up the bags at the Temple to conserve time and volunteer energy unless there is wide support to keep the deliveries of bags. Think about what is truly important, enjoy your family and try to stay healthy.

Wishing everyone a healthy and happy Rosh Hashana and meaningful Yom Kippur. Thank you for allowing me to serve as your Fundraising Coordinator. Please send me an email with your thoughts and ideas.

Respectfully,

**Deborah Linder**

Fundraising Coordinator and  
Corresponding Secretary  
Temple Emanu-El Board of Directors





## Events & Service Schedule

See High Holiday bulletin information pages and temple website for locations and service access information.

Sept. 2 Thur.	12:00-1:00 P.M.	Machzor (Prayerbook) Drive-through Pickup
	6:30-7:30 P.M.	Machzor (Prayerbook) Drive-through Pickup
Sept. 3 Fri.	7:00 P.M.	Kabbalat Shabbat Service
Sept. 6 Mon.	8:00 P.M.	Erev Rosh Hashanah Service
Sept. 7 Tues.	10:00 A.M.	Rosh Hashanah Morning Service including Board of Trustees Installation
	4:30 P.M.	Family Service
	5:15 P.M.	Tashlich and Havdalah
Sept. 10 Fri.	7:30 P.M.	Kabbalat Shabbat Service
Sept. 15 Wed.	8:00 P.M.	Erev Yom Kippur – Kol Nidre
Sept. 16 Thur.	10:00 A.M.	Yom Kippur Morning Service
	12:00 P.M.	Yizkor
	5:00 P.M.	Afternoon Service for all ages and Closing Service, Neilah
Sept. 17 Fri.	7:30 P.M.	Kabbalat Shabbat Service
Sept. 20 Mon.	7:30 P.M.	Sukkot Evening Service
Sept. 21 Tues.	10:00 A.M.	Sukkot Morning Service in the sukkah followed by bring your own picnic lunch
Sept. 23 Thur.	12:00-1:00 P.M.	Machzor (Prayerbook) Drive-through Drop Off
	6:30-7:30 P.M.	Machzor (Prayerbook) Drive-through Drop Off
Sept. 24 Fri.	7:30 P.M.	Kabbalat Shabbat Service
Sept. 26 Sun.	5:00 P.M.	Sukkot in the Sukkah – Cong. Beth El is inviting Temple Emanu-El for Pizza Supper, RSVP required
Sept. 27 Mon.	7:00 P.M.	Community Simchat Torah
Sept. 28 Tues.	10:00 A.M.	Shmini Atzeret/Yizkor Service
Oct. 1 Fri.	7:00 P.M.	Kabbalat Shabbat Service and Consecration
Oct. 2 Sat.	10:00 A.M.	Shabbat Morning Service Charlotte Frank Bat Mitzvah



## September Birthdays

Jay Alpert  
Lisa Barclay  
Sherry Barnes  
Michael Barnett  
Matthew Blum  
David Blustein  
Michele Caton  
Mitchel Corah  
Scott Daniels  
Stuart Deglin  
Golda Siegel Doyle  
Michael Dunkerley  
David Engelman  
Sandra Fisher  
Bruce Flax

Shirley Goldblatt  
Leonard Goldstein  
Madison Goldstein  
Jay Hans  
Susan Hausmann  
Matthew Hausmann  
Elyse Hicks  
Sarah Julia Kaplan  
Sarah Julia Kaplan  
Brian Lazarus  
Cynthia Lesser  
Paul Luner  
MicKayla Marcus  
Bayla McCaffrey  
Rebecca Morea

Zachary O'Brien  
Jennifer Rock  
Phil Schneider  
Nicole Schneider  
Sarah Selke  
Samuel Selke  
Lee Snyderman  
Ann Stavrou  
Tzipora Szeligowski  
Philip Trostler  
Jane Weinberg  
Zoe Weiss-Newall  
Yitzchak Winograd  
Sherry Wolfe  
Peter Zelken



## September Anniversaries

Sean and Anne Bendick  
Andrew Feinstein and  
Elizabeth Bochain  
Lori and Mitchel Corah  
Barry and Cecile Feldman  
Abraham and Sandra  
Fisher  
Gerry and Hali Keeler  
Arthur and Emily Lerner  
Paul and Anne Luner  
Richard and Erica  
McCaffrey  
Shoshanna Weiss and  
Mark Newall  
John and Jamie  
Stavropoulos  
Sheldon and Amy Stricker  
Martin and Margaret  
Trehub  
Scott and Jennifer Zettler



**September 3**  
Bluma Cohen  
David Fearer  
Lanny Glasgow  
Edward Ilson  
Cory LeVine  
George Lupkay  
Samuel Steinman

**September 10**  
Leah Betten  
Selma Orenstein  
Ann Grant  
Daniel Bloomfield  
Judy Fishbone  
Tibe Smith  
Jack Fischburg  
Bernice Moeller  
Robert Schor  
Herbert Swiedler  
Sylvia Stoner  
Yetta Diamond  
Stanley Falk  
Pearl Glasgow  
Harold Goteib  
Dorothy GreenL  
Bernice Moeller  
Selma Orenstein  
Dorothy Rosen

Robert Schor  
Tibe Smith  
Sylvia Stoner  
Herbert Swiedler  
Charlotte Winograd

**September 17**  
Neal Buckstein  
Rose Dibner  
Rabbi Chiam Feuer-  
man  
Isadore Gottleib  
Evelyn Graber  
Charlotte Hoper  
Donald Martin Kelmar  
Boris Liberman  
Michael Manson  
Isidor Meckler  
Richard Namenson  
Mildred Pincus  
Dorothy Rosen  
Barbara Segal  
Nathan Snyderman  
Esther Stein  
Arlene Wessel

**September 24**  
Harold Alper  
James Connell

Wolf Davidson  
Jack Dinsfriend  
David Flitt  
Sarah Ann Grayson  
Jeffrey Greenberg  
Eileen Kaplan  
Sol Krasner  
Alvin Michaelson  
Claude Moynihan  
Seymour Ofstein  
Francis Perry  
Abraham Sutel  
Alvin Swatzburg  
William Thorp  
Sindey Vail  
Joel Weiss  
Dr. Norman Zeldis



## ***We are eternally thankful for the support of those below. . .***

### **Aaron and Pearl Parker Religious School Fund**

Ronald and Jayne Elkin

---in loving memory of Pearl Parker on her yahrzeit  
Abe and Sandy Fisher

---in loving memory of Stanley Jacobson on his  
yahrzeit

---mazel tov to the Kanfer family in honor of Bethany's  
marriage to Gavier (Gavi) Figueroa

Al and Norma Hollandersky

---in loving memory of Bernice Bunny Stern on her  
yahrzeit

---thank you Sherry Barnes for all your help teaching  
us the prayer translations and more!

---in loving memory of Warren Hollandersky on his  
yahrzeit

### **Endowment Fund**

Charlotte Freeman

---in loving memory of Harry Chevan on his yahrzeit

Claire Warren

---in loving memory of Wade Nelson on his yahrzeit

### **Essential Services Fund**

Alan and Patti Gruber and sons

---in loving memory of Morton Klieback on his yahrzeit  
Caren and Bob Linden and family

---in loving memory of Leah Goldberg Asen on her  
yahrzeit

Connie Rubin

---in loving memory of Marshall Rubin on his yahrzeit

Ellen Gottfried

---in loving memory of Abraham Gottfried on his  
yahrzeit

---in loving memory of Marion Gottfried on her  
yahrzeit

Frederic West

---in loving memory of Dorothy West on her yahrzeit  
Gail and Steve Weber

---in loving memory of Meta Altman on her yahrzeit  
Judy and Stephen Mann

---mazel tov to Joshua Johnson on becoming a  
Bar Mitzvah

---mazel tov to Aryn and Ari Rosenberg on their  
wedding

Lester Shapiro

---in loving memory of Jerry Moynihan, uncle of  
Claudia Shapiro on his yahrzeit

---in loving memory of Dorothy Levine on her yahrzeit  
Lois and Stephen Panikoff

---condolences to the Bendick Family on the passing  
of Sean's father, Donald Bendick

---condolences to Lester Shapiro on the passing of  
Claudia Shapiro

Marilyn Halpern

---in memory of Dianna Fischburg on her yahrzeit

Martin and Joanna Lazarus

---in loving memory of Irene Levy on her yahrzeit  
Michele and Harvey Snitkin

---in loving memory of Jodie Gorin Stewart on her  
yahrzeit

Nanci Fox

---in honor of Joshua Johnson's Bar Mitzvah

Sam Winograd and Roberta Reisner-Winograd

---in appreciation of Barbara Senges and John  
Murphy's kindnesses

### **Mitzvah Fund**

Barry and Cecile Feldman

---in celebration of the birth of Olivia Zhao Shiling,  
granddaughter of Claire Warren

Edith Ziegler

---in loving memory of Joseph Ziegler on his yahrzeit

Judy and Stephen Mann

---in memory of Susan Greenhalgh

---in memory of Catherine Eichler Erfurt

Scott Leader

---in memory of Roz Leader on her yahrzeit

Shirley Goldblatt

---in loving memory of Morris Epstein on his yahrzeit

### **Prayer Book Fund**

Carl and Susan Rosen

---in honor of Sherry's Hebrew lessons

CONTINUED ON PAGE 11

***Please make checks payable to Temple Emanu-El and remit to PO Box 288, Waterford, CT 06385***



## ***We are eternally thankful for the support of those below. . .***

CONTINUED FROM PAGE 10

### **Rabbi Aaron Rosenberg Tikkun Olam Scholarship Fund**

Al and Norma Hollandersky

- in loving memory of Bernice Bunny Stern on her yahrzeit
- in honor of Regan Kaye receiving the Rabbi Aaron Rosenberg Tikkun Olam Scholarship
- in honor of Amanda Rowe receiving the Rabbi Aaron Rosenberg Tikkun Olam Scholarship
- in honor of Hannah Linder receiving the Rabbi Aaron Rosenberg Tikkun Olam Scholarship
- in honor of Jack Haynes receiving the Rabbi Aaron Rosenberg Tikkun Olam Scholarship
- in loving memory of Warren Hollandersky on his yahrzeit

### **Rabbi's Discretionary Fund**

Al and Norma Hollandersky

- in loving memory of Bernice "Bunny" Stern on her yahrzeit
- Edward Perry
- in loving memory of Claire Perry on her yahrzeit
- Ethel Chatkin
- in loving memory of Sol Gordon on his yahrzeit

Gladys Kimmel

---in loving memory of Irving Goodstein on his yahrzeit

Irma Flitt

---in loving memory of my husband, Sonny Flitt on his yahrzeit

---in loving memory of Jacob Stillman on his yahrzeit  
James Anouna

---thank you for officiating our wedding ceremony  
Joe Segal

---thanks Rabbi Marc Ekstrand for all your kindness  
Michele and Harvey Snitkin

---in loving memory of Eileen Iorillo on her yahrzeit  
Norma and Allan Hollandersky

---in memory of Aaron Marc Goldblatt

---in memory of Donald Bendick

---in loving memory of Warren Hollandersky on his yahrzeit

Stanley and Karen Bloustine

---in loving memory of Rose Baker on her yahrzeit

### **Torah Fund**

Frederic West

Michael and Linda Barnett

---in loving memory of Max Barnett on his yahrzeit

## ***Sukkot in the Sukkah***



Oh Sukkot, In the Sukkah  
shake the lulav and Etrog  
Come dine out outdoors  
and share entertaining dialogue

Gather 'round the table  
We'll give you a treat,  
Kosher (plus gluten free) cheese pizzas to join together and eat

And while we are dining  
The sun will be setting low  
A fun, festive holiday filled with enjoyment

To remind us of days long ago  
A fun, festive holiday filled with enjoyment  
To remind us of days long ago

***Congregation Beth El is inviting Temple Emanu-El members to join together as we celebrate #Sukkot2021!***

Time: **5:00 PM**

Date: **Sunday, September 26**

**RSVP by Sept. 22:**

**CBE (860) 442-0418**  
[office@bethel-nl.org](mailto:office@bethel-nl.org)

**TEE (860) 443-3005**  
[office@tewaterford.org](mailto:office@tewaterford.org)

**High Holiday Details**  
**There are many changes this year to the service schedule.**

**Guidelines**

- **Note changes to service locations and masking requirements, since last mailing**
- For **outside services**, all non-vaccinated adults and children are required to wear masks; all vaccinated adults and children are encouraged to wear masks.
- All congregants and guests are welcome to attend services via Zoom. Preregistration for Zoom services is required. See [www.tewaterford.org](http://www.tewaterford.org) to find links to register for **each** service.
- If Zoom does not work for you, you may participate in services by watching YouTube Live. Note: there may be a short delay in start times when watching on YouTube.
- All Adults including families with young children are encouraged to attend all outdoor services on both Rosh Hashanah and Yom Kippur.
- A donation of \$75 per Guest is suggested.

**For those who plan on attending services via Zoom or YouTube Live**  
**Machzor (Prayerbook) Pickup, Thursday, September 2**

For those who plan on attending by Services by Zoom or YouTube Live

- Drive through at Temple Emanu-El (don't get out of your car)
  - Rabbi Marc and Cantorial Soloist Sherry will greet you with a set of High Holiday Machzorim
- Pick which time works for you:
- 12:00 P.M. – 1:00 P.M. or  
6:30 P.M. – 7:30 P.M.
- Return Payer books by driving through on Sept. 23, same time schedule as pick up.

**Mon., Sept. 6**  
**Tues., Sept. 7**

**Erev Rosh Hashanah Service 8:00 P.M. on Zoom and YouTube Live only**  
**Rosh Hashanah Morning Service 10:00 A.M. on Zoom and YouTube Live only**  
**Rosh Hashanah family service 4:30 P.M., outside at Hole in the Wall\***  
**Tashlich and Havdalah**, directly following family service, about 5:15 P.M.,  
**outside at Hole in the Wall\***  
symbolically cast off your sins at your favorite body of water in person or while on Zoom. Bring your own bread crumbs, shofar, Havdalah candle, spices, and wine/juice

**\* Hole in the Wall 4 Baptist Ln, Niantic, CT 06357**



### **Yom Kippur**

**Wed., Sept. 15** Erev Yom Kippur/Kol Nidre Service 8:00 P.M. **on Zoom and YouTube Live only**  
**Thurs., Sept. 16** Yom Kippur **Morning Service including Yizkor** Service 10:00 A.M. **on Zoom and YouTube Live only**

### **Yom Kippur Discussion**

Facilitated by Andrew Feinstein

This year's Yom Kippur discussion will focus on the relationship between American Reform Jews and Israel. Is Israel an essential part of American Reform Judaism? Should our support of Israel be conditional on Israel acting in accord with our values? Should we expect higher ethical standards from the government of Israel than we expect from the Government of the United States? Is the unconditional support of the Jewish establishment for Israel eroding commitment to Judaism by young people?

**Thur., Sept. 16** Yom Kippur **Afternoon/Family** Services 5:00 P.M. outside McCook Point Park Bandshell\*\*  
Yom Kippur **Neilah**, directly following family service 6:00 P.M. outside McCook Point Park Bandshell\*\*  
Havdalah outside McCook Point Park Bandshell\*\*

**\*\*McCook Point Park Band Shell, 8-10 Atlantic St. Niantic, CT 06357**

### **Religious School Parents and Brotherhood Volunteers Putting Up the Sukkah**

For Sukkot we will need **Religious School Parents and Brotherhood volunteers** to put up and take down the Sukkah. Help build the Sukkah on Sunday, **September 19, at 9:30 A.M.** Our Sukkah is very large, so we need a lot of material for the roof (*Schach*, in Hebrew). Please bring materials for the Sukkah any time after Yom Kippur. Things like ornamental grasses or cornstalks are ideal for the roof (*schach*).

### **Religious School Family Picnic Lunch, September 19**

Help Build the Sukkah and then help your children decorate the Sukkah at the end of religious school and stay for a picnic lunch. More information on the picnic to follow through the religious school.

### **Sukkot**

Sukkot Evening Service on zoom, **Monday, Sept. 20, 7:30 P.M.**

Sukkot Morning Service on **Tuesday, Sept. 21, 10:00 A.M.** we will enjoy an outdoor Sukkot worship.

### **Simchat Torah**

**Community celebration** of the Torah on Zoom, on Monday evening, **September 27, 7:00 P.M**

**Shmini Atzeret/Yizkor Service** morning, Tuesday, **September 28**, at 10:00 A.M. on Zoom and YouTube Live

**NOTE: Times and location of services may change due to weather or public health considerations. Please watch for e-mails or refer to our website for changes.**





**RE/MAX<sup>®</sup>**  
**ON THE BAY**

**FOR ALL YOUR  
REAL ESTATE NEEDS**

Direct: 860-443-4400 Cell: 860-625-5255  
Email: [Geoff@CallTheHouseMan.com](mailto:Geoff@CallTheHouseMan.com)  
Website: [www.CallTheHouseman.com](http://www.CallTheHouseman.com)  
Blog: [CTHouseMan.com](http://CTHouseMan.com)



**THE City NEVER SLEEPS!**  
MYWHALINGCITY.COM • OPEN 24/7  
BROAD & COLMAN ST, NEW LONDON • 860.443.8361

**MY WHALING City**

860-443-CITY (2487)

**PsychologyCT.com**

**Schaperow Psychology & Associates:**  
Thorough diagnostic assessments; psychological testing; individual, marital, & family therapy.

**Drug & Alcohol Treatment:**  
Clinicians that specialize in drug & alcohol treatment.

**And:**  
**Cognitive Behavioral Therapy (CBT) Center:**  
Evidence-based CBT to improve mental health, and decrease stress for certain physical illnesses.  
860-447-2047 / [PsychologyCenterOffice@gmail.com](mailto:PsychologyCenterOffice@gmail.com)



**NEW LONDON  
SELF-STORAGE**

**CLIMATE CONTROLLED**

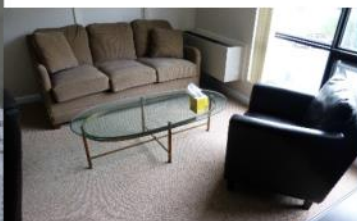
**860-442-0008**

[www.NLSelfStorage.com](http://www.NLSelfStorage.com)

*Conveniently Located Just Over  
the Waterford Town Line  
at 960 Bank St., N.L. behind Sign "A" Rama*

Brand New, Clean Facility  
24/7 Video Surveillance  
Secure Gate with Keypad Entry  
Month to Month Rentals  
Free "We'll Pick It Up" Service  
Locally Owned & Managed  
200+ Units - 6 Sizes, up to 10'4" ht.  
Climate Controlled Automobile Bays  
Boxes, Locks, Packing Supplies

Psychology CT LLC is **seeking renters**, as we have **beautiful offices available** in Waterford. These offices are perfect for professionals (e.g., therapists, massage therapists, small practice attorneys & accountants, certain kinds of physicians, etc.), especially those that don't need a reception area, but may still benefit from a waiting area. Please see <https://sites.google.com/site/schaperowpsychology/office> for details, or email [psychologycenteroffice@gmail.com](mailto:psychologycenteroffice@gmail.com) for more information. PsychologyCT.com



TEMPLE EMANU-EL  
PO BOX 288  
WATERFORD, CT 06385

Please use PO BOX 288 WATERFORD, CT 06385  
when mailing material to the temple

Non-Profit  
Organization  
U.S. Postage PAID  
New London, CT  
06320  
Permit #480

**Deadline for October 2021 Bulletin is Friday, Sept. 10**

Email your articles to Roberta at [office@tewaterford.org](mailto:office@tewaterford.org)

CHANGE SERVICE REQUESTED

## Our Leadership

**Rabbi** / Marc Ekstrand / [rabbi@tewaterford.org](mailto:rabbi@tewaterford.org)  
**Rabbi Emeritus** / Aaron Rosenberg / [arloveskr@aol.com](mailto:arloveskr@aol.com)  
**Cantorial Soloist** / Sherry Barnes /  
[cantorialsoloist@tewaterford.org](mailto:cantorialsoloist@tewaterford.org)  
**President** / Andy Parad / [president@tewaterford.org](mailto:president@tewaterford.org)  
**1<sup>st</sup> Vice President** /  
**VP of Building and Grounds** / Russell Sheikowitz /  
[buildingsgrounds@tewaterford.org](mailto:buildingsgrounds@tewaterford.org)  
**VP of Religious Practices** / Claire Warren  
**Treasurer** / Thomas Smith / [treasurer@tewaterford.org](mailto:treasurer@tewaterford.org)  
**Vice Treasurer** / Bruce Goldstein  
**Recording Secretary** / Marcia Reinhard  
**Corresponding Secretary** / Deborah Linder  
**Immediate Past President** / Jo-el Fernandez  
[pastpresident@tewaterford.org](mailto:pastpresident@tewaterford.org)  
**3 Year Trustees:** Michael Barnett, Michele Caton, Amy Orce,  
one unfilled  
**2 Year Trustees:** Robbin Alpert, Susan Cramer, Amy Perry,  
Shoshana Weiss  
**1 Year Trustees:** John Murphy, Irene Brickman-Smith,  
Gail Weber, Scott Wolfe

**Membership Co-Chairs** /  
**Social Action Chair** / Marty Zeldis  
**Sisterhood** / Gail Weber & Barbara Senges/  
[sisterhood@tewaterford.org](mailto:sisterhood@tewaterford.org)  
**Gift Shop** / Susan Hausmann / [judaicashop@tewaterford.org](mailto:judaicashop@tewaterford.org)  
**Brotherhood** / [brotherhood@tewaterford.org](mailto:brotherhood@tewaterford.org)  
**Kitchen Committee Chair** / Edee Smith  
**Religious School Administrator** / Rachel O'Brien /  
[religiousschool@tewaterford.org](mailto:religiousschool@tewaterford.org)  
**Office Administrator** / Roberta Reisner-Winograd /  
[office@tewaterford.org](mailto:office@tewaterford.org)  
**Webmaster** / Aaron Kaplan / [webmaster2@tewaterford.org](mailto:webmaster2@tewaterford.org)  
**Custodian** / Don Kasper  
**Bulletin Editor** / Mimi Perl  
**Location:** 29 Dayton Road, Waterford, CT 06385  
**Mailing Address:** PO Box 288, Waterford, CT 06385  
Office: **860-443-3005**  
Religious School: **860-443-3005**  
Website: [www.tewaterford.org](http://www.tewaterford.org)