



## Rabbi's Message - Marc Ekstrand

Friends,

The High Holy Days, Sukkot and Simchat Torah are behind us. Once again, because of the pandemic, we were not able to gather in person for many of these holidays. Yet with the help of many dedicated AV Club members, we were able to offer meaningful online High Holy Day services. Thanks so much to Sean Bendick, Armi Rowe, Stanley Bloustine, Jonathan Rowe, and Nathaniel Rowe. Every time we have a hybrid or virtual service, it is like a TV show production. Everything must be planned and executed precisely. We simply could not provide you the same quality level of online services without this dedicated crew. We are also very thankful for Leslie Merwin, our organist and pianist. Leslie has been with us for four years. We knew Leslie was the right organist for us when we first met her. Sherry and Leslie have worked together better each year. This year, Leslie has been struggling with her health. It was all the sweeter that we could work together this year – a little spiritual therapy for all of us. Keep Leslie in your prayers for healing.

We were able to have two spectacular outdoor HHD programs. We had a wonderful afternoon at the beach on Rosh Hashanah, celebrating the birthday of the world. Kids and a few adult kids made sand art murals representing the six days of creation from Genesis. Then we joined together for song, *tashlich*, and capped it off with a shofar blast. It was great fun. We have a lot of new families in the religious school. It was wonderful to see so many of you at the beach and get to know each other. We were also outdoors for a Yom Kippur afternoon program with our own Jonah play included, and the closing Neilah service. McCook's Beach was an amazing venue for Neilah. The weather held out and we even had sunshine just before sunset. The sound of the waves, voices singing, children run-

ning around were capped off with Jose Cordero's final *t'kiah g'dolah* shofar blast. Thank you, Jose.

There are a couple of people that I would like to recognize for their efforts bringing all of these programs together. Susan Cramer collaborated with Sherry and me to create our Rosh Hashanah and Yom Kippur afternoon programs. Susan is very creative and very organized. Sherry and I are so grateful to Susan for helping us bring these programs to you. Barbara Senges also helped with many aspects of planning for the services. This year was particularly difficult because we had originally planned hybrid services. Turning on a dime to go 100% virtual required a lot of careful decisions. Barbara's wisdom helped us navigate every turn. Thank you to Susan and Barbara.

The first days of religious school are also behind us. One of the most important missions of Temple Emanu-El is to teach our children about Judaism and Reform Jewish values. Jennifer Zettler and Armi Rowe turned over the directorship of our Religious School to Rachel O'Brien. Rachel brought many people together over the summer to clean, reorganize and paint the school wing. The school looks fabulous. Amy Orce has also been instrumental in organizing the school. With the addition of several new families, we once again have a bustling school wing on Sunday mornings. It is so wonderful to have our children back for in-person learning. Thanks to Rachel, Amy, all of the teachers, and our faculty assistants. It is going to be a fabulous year.

Lastly, thanks to you. It was very difficult to make the decision to be virtual for the main services of the High Holy Days. We know how much you were looking forward to in person services. We tried our best to plan safe in-person services, but the pandemic numbers just didn't cooperate. Thanks to Jo-el Fernandez and Andy Parad for their leadership. But thanks especially to you for your patience and faith. With your continued support, we will emerge from this pandemic a stronger and more vibrant congregation.

L'shana Tova,

**Rabbi Marc**

## President's Message - Andy Parad

I'm writing this between the two big High Holy Days and just a day after taking the kids to the beach for the second time this week – because they had such a good time the first time they pretty much demanded we go again. For those who missed it, the Rosh Hashana family service followed by Taslich was at Hole in the Wall Beach in Niantic. On Baptist Lane as the Rabbi likes to point out. Our very own Susan Cramer put together a creative idea of having large open pallettes in the sand representing the days of creation. The kids (and some adults) dug, drew, and placed items representing those days in quite a creative fashion. The best part was this was outdoors and not in front of a computer screen.

As I said in my Rosh Hashana speech, the leadership has been watching and must continue to closely watch and be guided by science in how we go forward. Science right now is telling us that vaccinated people can get sick and end up in the hospital, so we all need to

remain vigilant in our daily lives and in the interactions we have with others.

Since we are all virtual at the moment, when rumors spread it is difficult to get a hold on them. The Board and the Religious School teams are working very hard behind the scenes to not only keep things running right now, but with an eye to the future to be able to sustain what we are doing. So there are a lot of moving parts at the moment. Please feel free to reach out with any questions, concerns, or suggestions.

Take care and stay safe.

**Andy**



## Notes from Sherry Barnes



October is my favorite month of the year. I love the color of the leaves; feel more alive and aware of the beauty around me. Maybe it's the crisp air, the crystal blue sky, pumpkin pancakes, making soup, classical music, or wearing cozy sweaters. It reminds me of

how beautiful and precious this planet is.

When I was a kid, I watched almost all the space missions and daydreamed about being in space. During class, I wished the Starship Enterprise would "beam me up", so I could see the Earth from space and travel to different planets. With my love of space exploration, I was very excited to have stumbled upon the SpaceX mission, Inspiration4, and began to follow the 4, all civilian, non-professional astronauts, as they trained to fly into space in the Dragon spacecraft.

I binged watched the 3 or 4 episodes on Netflix and waited to see the launch. When the SpaceX Dragon spacecraft with the Inspiration4 crew, was in orbit and floating around the cabin, they showed us the view from the newly installed dome window, or cupola. I

was once again truly in awe at the beauty of our blue planet.

It never gets old for me. Julie Gold's song says, "From a distance the world looks blue and green and the snowcapped mountains white. From a distance the ocean meets the stream and the eagle takes to flight, From a distance there is harmony and it echoes through the land. It's the song of hope, it's the song of peace, it's the song of every man." We really do look like a peaceful planet.

It's beauty reminds me of the Midrash that says "When G-d created the first man, He said to him, 'See My works, how beautiful and praiseworthy they are. And everything that I created, I created it for you. Be careful not to spoil or destroy My world—for if you do, there will be nobody after you to repair it.'"

G-d created this beautiful world for us to take care of, so that we, our children, our grandchildren, and all the generations that follow us, can live on the beautiful planet, and be sustained by it.

I hope you have a chance to see some of the transmis-

CONTINUED ON PAGE 3

## Notes from Sherry Barnes -- CONTINUED FROM PAGE 2

sions from the Inspiration4 launch and mission, and others that have captured these amazing pictures and videos of our truly awe inspiring planet. Here's to human ingenuity that may someday allow everyone to travel in space and enjoy this view from above!

Many thanks and appreciation to all those who participated, worked behind the scenes, helped in any way to ensure that our High Holy Day Services were successful and spiritually fulfilling.

Thank you to Rabbi Marc, who is always looking for meaningful ways to engage our congregation.

Thank you to those who helped build the Sukkah. The Religious School students enjoyed hanging their decorations in it.

Please watch for classes that I will be offering in the November's bulletin.

B'shir,

**Sherry**

## Sisterhood -- Gail Weber & Barbara Senges, Co-Presidents



**Hi Ladies,**

Many thanks to Gail Weber and Cecile Feldman (who baked delicious rugelach and cookies) for hosting a **special membership event** on September 12<sup>th</sup>, the opening day of in-person Religious School.

Our **yearly Membership Drive** is ongoing, and we hope to surpass our membership of last year of over hundred members. It is never too late to send in your dues of \$36 to Caren Linden or to give it directly to us at an upcoming Sisterhood event.

**Welcome to these new women of Temple Emanu-El and Sisterhood:** Byrne Blumer, Rebecca Brody, Elizabeth Hall, Debbie Kupfer, Sherry Wolfe, and Debra Wool. We are looking forward to getting to know you and welcoming you at future Sisterhood events.

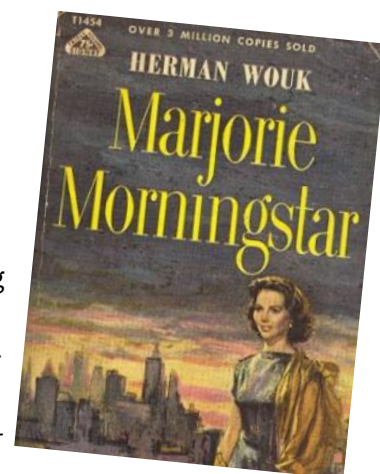
**4K Safe Walk 2021 to support Safe Futures** – Join the

Temple Emanu-El Sisterhood Team for this walk on Sunday, Oct. 17 at 9:00 am at Waterford High School.

Pre-registration is suggested. Go to the Safe Futures website: <https://safefuturesct.org/>

Go to Register, then Join a Team (Temple Emanu-El Sisterhood). Anyone can join our team! We look forward to seeing you and supporting such an important organization. For those of you who are not familiar with Safe Futures, they support victims of domestic violence, sexual assault, stalking and trafficking in Southeastern CT. Sisterhood has participated in this walk for the past 3 years. Mark your calendars and be part of this fun and worthwhile event!

**Our second Sisterhood Book Club will be held on Monday, November 8 at 7:00pm.** Chairperson Cecile Feldman will guide us through a stimulating discussion of “**Marjorie Morningstar**” by **Herman Wouk**. This American classic was published in 1955 and was made into a film starring Gene Kelly and Natalie Wood in 1958. The heroine of the novel, Marjorie Morgenstern, is nine-



CONTINUED ON PAGE 4



## Sisterhood -- Gail Weber & Barbara Senges, Co-Presidents -- continued from p. 3

teen years old when she leaves New York to accept the job of her dreams- working in a summer-stock company for Noel Airman, its talented and charismatic director. "Marjorie Morningstar" has been called "the first Jewish novel that was popular and successful, not merely to a Jewish audience but to a general one".

Sisterhood will host a **cooking class on Zoom on**



**Thursday, November 18 at 7:00 pm**, to prepare all of us to make a delicious pie for Thanksgiving, and very tasty and easy to make latkes for Chanukah. Check your emails for the Zoom Link and more information in early November.

We are always looking for suggestions for Sisterhood events. Please contact us anytime if you have an idea to share.

Watch for upcoming information to pre-order your



**2022 Mah Jongg cards** through TE Sisterhood. By ordering through Sisterhood, we receive a donation from the NMJL. – Iris Freeman [ifreegang@aol.com](mailto:ifreegang@aol.com)

## Temple Emanu-El Gift Shop

Great News! The merchandise is finally back in the gift shop. Now you can either shop in person on Sunday mornings, or you can visit the website and arrange for the items to be picked up. To shop online go to the Temple Homepage and click on the Judaica



Shop graphic or go to <https://judaicashop.wixsite.com/website>.

As you know, I am stepping down from my position on June 30, 2022. If anyone is curious what the position requires, please contact me at [judai-cashop@tewaterford.org](mailto:judai-cashop@tewaterford.org).

**Susan Hausmann**

## Communications Committee

The Communications Committee continues to keep our Temple website, **[tewaterford.org](http://tewaterford.org)**, updated. This includes our Recipe of the Month, compliments of Flossie Betten and Sue Fornara. Started in November 2020, a new recipe has been added every month since. You can click on the Recipe of the Month link under Highlights on the Temple Homepage to see what new yummy option is posted for October, and then scroll down to find other delicious recipes you might have missed!

Did you try a favorite recipe? Or did your family have fun making something together? The current plan is to post new recipes each month through the end of the year. We will consider whether or not to continue beyond December, but we need to hear from you! Please let us know if you are enjoying these recipes by sending an email to Sue at [communications@tewaterford.org](mailto:communications@tewaterford.org).

Explore other areas of our website for up-to-date information on what is happening at Temple Emanu-El and in the community.

## October B'not Mitzvah



**Charlotte Frank**

**October 2, 2021**

Charlotte Frank will become a Bat Mitzvah on Saturday October 2, 2021 assisting Rabbi Marc Ekstrand and Cantorial Soloist Sherry Barnes in leading the morning Service.

Charlotte is the daughter of Randee Frank Siegal of East Lyme and Kevin Hoar of Groton.

She recently graduated from East Lyme Middle School and is eager to attend East Lyme High School (in person) for the 2021-2022 school year.

Charlotte has attended TERS since Kindergarten. She has participated in events for both Junior Youth Group and BBYO sponsored by JFEC.

Please join us in wishing Charlotte Mazel Tov on her special day.



**Sarah Kaplan**

**October 9, 2021**

Sarah Kaplan will become a Bat Mitzvah on Saturday October 9, 2021 while assisting Rabbi Marc Ekstrand and Cantorial Sherry Barnes in leading the morning service.

Sarah is the daughter of Jennifer Kaplan of Montville and Aaron Kaplan of Norwich.

Sarah is now an 8th grader at Tyl Middle School in Montville. Sarah loves playing the Attack position on the Lacrosse team in Montville. She also loves building Legos, drawing and coloring.

Sarah went to the Jewish Nursery School in New London called Beth-El when she was 4 years old then attended Solomon & Schechter grade school Kindergarten & 1st grade. She then started at TERS Religious School from 2nd grade. She has also attended the JFEC Youth group since 5th grade & is now going to BBYO.

Please join us in wishing Sarah Mazel Tov on her special day

## Fundraising



### Temple Emanu-El Fundraiser

Order before Noon every Sunday for Thursday Delivery

*Promo valid from October 1, 2021 through December 31, 2021.*



15% of the sales are donated to Temple Emanu-El.

Use Promo Code: **NLEmanu15**

### Dine to Donate Fundraiser

Our Dine to Donate fundraiser will be with an online catering company Yosi Catering that will deliver a dinner to your home. The link <https://nalas-kitchen.com/mealsbyunit?categories=39,40> and code **NLEmanu15** to use starting October 1st through December 31st when ordering catered delicious dinners through Yosi online will bring in 15% of the proceeds as a donation to the Temple Fundraiser Dine to Donate. The clickable link can be found in the weekly e-mails.

It is important to note:

You may order from either Nala's Kitchen or Yossi (same sight) for any date, however, if you want kosher food, it must be ordered for a

Thursday delivery date. The kosher foods are by Yossi. And some Mediterranean dishes by Nala's Kitchen.

### Temple Emanu-El Raffle has begun.

720 Tickets are on sale now for \$25 each.

No need to wait for a phone call or an e-mail, contact John Murphy [jem1219@atlanticbb.net](mailto:jem1219@atlanticbb.net) or the office at [office@tewaterford.org](mailto:office@tewaterford.org) or mail your request to Temple Emanu-El, P.O. Box 288, Waterford, CT 06385



### Thank you to our sponsors!

1st Prize FIVE- \$500 VISA GIFT CARDS

Sponsored by Kenn and Kim Fischburg

2nd Prize APPLE IPAD PRO

Sponsored by Sayet and Seder Attorneys at Law

3rd Prize \$500 VISA GIFT CARD

Sponsored by Creative Office Interiors, LLC

4th Prize \$300 TARGET GIFT CARD

Sponsored by Bill and Ellen Seeman

5th Prize \$200 HOME DEPOT Card Sponsored by Adam Kaufman and Rebecca Woodward

6th Prize \$150 WALMART GIFT CARD Sponsored by John Murphy and Barbara Senges

7th Prize \$100 AMAZON GIFT CARD Sponsored by Jonathan and Armi Rowe



## Events & Service Schedule

Oct. 1 Fri.	6:30 P.M.	Consecration Outside
Oct. 1 Fri.	7:00 P.M.	Kabbalat Shabbat Service
Oct. 2 Sat.	10:00 A.M.	Shabbat Morning Service
		<b>Charlotte Frank Bat Mitzvah</b>
Oct. 8 Fri.	7:30 P.M.	Kabbalat Shabbat Service
Oct. 9 Sat.	10:00 A.M.	Shabbat Morning Service
		<b>Sarah Kaplan Bat Mitzvah</b>
Oct. 12 Tues.	7:00 P.M.	Talking About G-d
		Register for class ahead of time.
Oct. 13 Wed.	7:30 P.M.	Board of Trustees Meeting
Oct. 14 Thur.	7:00 P.M.	Peace and Justice Pilgrimage
		Register for class ahead of time
Oct. 15 Fri.	6:00 P.M.	Family Fun Friday
Oct. 17 Sun.	9:00 A.M.	Join Sisterhood in the 4K Safe Walk 2021 to support Safe
		Futures at Waterford High School
Oct. 15 Fri.	7:30 P.M.	Kabbalat Shabbat Service
Oct. 22 Fri.	7:30 P.M.	Kabbalat Shabbat Service
Oct. 26 Tues.	7:00 P.M.	Talking About G-d
		Register for class ahead of time
Oct. 29 Fri.	7:30 P.M.	Kabbalat Shabbat Service

## Temple Emanu-El Religious School (TERS) - Rachel Obrien

L'Shana Tova! The first day of religious school went smoothly and religious school is in full swing with new lessons and refurbished classrooms. This past month has been very busy as our families celebrated the High Holidays, Sukkot and Simchat Torah. Our school-wide event **"Picnic in the Sukkah"** was very well attended, and the kids enjoyed hanging their handmade decorations and the subsequent hot dog picnic with family and friends. Meanwhile, our teachers spent the month incorporating age-appropriate discussions about the history, customs, and meaning behind the holidays as well as discussions on the Jewish values connected to each.



Special thanks to some of our new teachers! We are so lucky to add Liora Zeev'i to our team, who taught for many years at Solomon Schechter. Liora will be teaching Kitah Vav (6th grade) Hebrew. Violet Kanfer, another seasoned teacher and a longtime member of our congregation has joined our staff as our Kitah Bet (2nd/3rd grade) teacher. Elena Crowell, a freshman at Connecticut College who was actively involved at her Temple back in Newtown, Pennsylvania, is our new Kitah Gan/Alef (K/1st) teacher. Elena comes to us with prior religious school teaching experience. We also wish to welcome Jennifer Bloom, a Connecticut College soph-

CONTINUED ON PAGE 8

## Temple Emanu-El Religious School (TERS) - Rachel Obrien - continued from p 7

omore from Massachusetts who has years of experience working with children and is a member of Holocaust Legacy Foundation and participant of the Jewish Teen Initiative and BBYO. She is taking over our Kitah Vav (6th grade) Judaic class. Welcome and thank you for dedicating yourselves to helping create a school that we can all be proud of.

Some exciting news is that we will also be seeing some changes to this year's usual programming. Wednesday will continue to be virtual, enabling our students in grade 3-7th to have one-on-one Hebrew instruction. Over the last few months, I have received overwhelming positive feedback, from parents and staff, regarding how well this worked for our students last year, so it only made sense to continue this practice moving forward. Teachers have been in touch with their families and students and are now meeting individually with each of their students on Wednesday.

If you have not had a chance to mail in or drop off your child's registration form and physical or copy of their vaccination card, for those 12 years and older please, please do so as soon as possible.

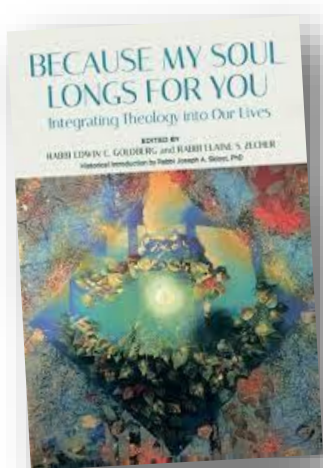
Please join us as some of our youngest learners in Ms. Crowell's Kitah Gan/Aleph (Kindergarten/1st Grade) and Mrs. Kanfer's Kitah Bet class are welcomed formally into their religious school education as **Consecration celebrants on Friday, October 1st**, either before or during the Shir Shabbat service at 7:00pm. Details will be announced once plans are formalized. We have eight consecrants this year, one of the largest groups that our school has seen in quite a while.

There will be **no religious school on Sunday, October 11 in observance of Indigenous People Day** and on **Friday, October 15** we will gather for our first **Fun Family Friday** which takes place the third Friday of every month. Fun Family Friday night provides a special opportunity for our children to socialize with their religious school friends. It is an evening to play games and activities that will help the kids/families get to know each other.

May you and your families have a sweet new 5782,

**Rachel O'Brien**

## Rabbi Marc's Fall Learning Opportunities



**Talking about God:** Most of us long for understanding that something that we call 'God'. Yet often we find that talking about God is very difficult. In this series we'll use the book, Because my soul longs for you: Integrating theology into our lives, edited by Rabbis Edwin Goldberg and Elain Zecher, as a jumping off point for our own God talk. Email Rabbi Marc to inquire or register for the class as [marcekstrand@gmail.com](mailto:marcekstrand@gmail.com).

**Tuesday evenings at 7PM: October 12 and 26, November 9 and 23, December 14 and 21.**

**Peace and Justice Pilgrimage:** In 2019 I made a pilgrimage with clergy colleagues to Montgomery, Tuskegee and Birmingham, AL. The highlights were visits to the Legacy Museum and The National Memorial

for Peace and Justice and The Birmingham Civil Rights Institute. This was a life changing trip. The journey began a couple of years prior in a book group as an exploration of issues of racism. I am still on that journey. Now I'm inviting you to come along with me exploring books, articles, movies, and guest speakers. Later this year, we'll join with a group from All Souls UU. Eventually, when the pandemic abates, we'll plan our own Peace and Justice Pilgrimage. Email Rabbi Marc to inquire or join the group. **Second Thursday of each month at 7PM beginning October 14.**





## October Birthdays

Jacob Bendick  
Marcia Brensilver  
Charlie Brody  
Jean Brown  
Norman Cooper  
Bruce Darling  
Karen Dinsfriend  
Adam Engelman  
Andrew Feldman  
Jess Feldon  
Jo-el Fernandez  
Kenneth Fischburg  
Kimberly Fischburg  
Stuart Fishbone  
Chris Fornara

Arthur Fox  
Aleah Fox-Caulin  
Samuel Gipstein  
Paul Goldstein  
Monica Goldstein  
Morgan Hicks  
Jennifer Kaplan  
David Raymond Kaplan  
Rachel Kayla Kaplan  
Rick Kaye  
Mitchell Krasney  
Gregory Kronisch  
Simone Lerner  
Barbara Luftglass-  
Morea

Steve Mann  
Jo Michaelson  
Caryn Novick  
Michael O'Brien  
Rachel O'Brien  
Mike Reinhard  
Roberta Reisner-  
Winograd  
Katherine Rosen  
Maira Ross  
Evan Seeman  
Sara Seeman  
Jennifer Segal  
Anna Seidner  
Sophia Selke

Barbara Senges  
Haley Sharack  
Samuel Sher  
Adam Sheriff  
Jacoby Shiling  
Danny Sitko  
Thomas Smith  
Martin Trehub  
Laurie Wickson  
Scott Wolfe



## October

### Anniversaries

Susan and Chris Fornara  
Lawrence and Susan  
Goldman  
Mike and Rebecca Haynes  
Clayton and Elyse Hicks  
Louis and Anne Kronisch  
Amy and Dan Orce  
Carl and Susan Rosen  
Bradley and Rachel  
Sherman  
Robin Margolis Silsby and  
John Silsby  
Andrew and Samantha  
Venooker  
Adam Kaufman and  
Rebecca Woodward

### October Yahrzeits

#### October 1

Irvin Christenson  
Rochelle Gurwitz  
Norman Hirsch  
Bill Kosseff  
Eleanor Krasney  
Miriam Emily Lamchick

Sarah Belva Lewis  
Jack Millstein  
Matthew Perry  
Sarah Resnick  
Alexander Rosen  
Carl Ruck  
Dr. Leonard Silverman

#### October 8

Betty Bendick  
David Bialer  
Eleanor Comforti  
William Dibner  
Joel Dinsfriend  
David Edgar  
Stanley Gordon  
Esther Green  
Adele Panikoff  
Rosella Rappoport  
Michael Ronay  
Sarah Ann Salowitz  
Russell Smith  
Laurene Stewart  
Eleanor Torrest  
Margaret Yeomens  
Warren  
Samuel Werner

#### October 15

Anna Beck

Jason Becker  
Maurice Blinderman  
Eugene Frank  
Aryeh Friedman  
Sarah Friedman  
Julia Gejdenson  
Morris Irwin  
Kate Liebling  
Harry Linden  
Phillip McCaffrey  
Luke Moreo  
Louis Ratner  
Joel Sandy Shapiro  
Dina Sharack  
Ely Sherman  
Robert Marvin Zechman

#### October 22

Coleman Andelman  
Dr. John P. Ekstrand  
Evan Scott Goldman  
Shirley Gordon  
Seymour Hendel  
Betty Jean Linden  
Ludwig Rubinsky  
Klare Selo  
Francis W. Wiesniewski  
Max Yavener  
Hinda Freeman Zisholtz

#### October 29

Monica Andres  
Paul Cantor  
Judy Dancer  
Jean Mary Furman  
Krupa Putala  
David Glazer  
Ann Goldblatt Krysta  
Meyer Goodman  
Samuel Goodman  
Fanny Gordon  
Mike Greenberg  
Elizabeth Greenhalgh  
Eric Jacob Hartman  
Hilbert Hendel  
Gussie Kaufman  
Sarah Liebowitz  
Judy Lupkay  
Elizabeth Mettler  
Sylvia Moynihan  
Yale Orenstein  
Leo Rosenberg  
Dora Schaferman  
Jon Scheiber  
J. Julius Schnable  
Max Seeman  
Arthur Steckler  
Beatrice Stein  
Norman Sutel  
Leona Tower

## ***We are eternally thankful for the support of those below. . .***

### **Cantor's Fund**

Gail Schor

---in loving memory of Bob Schor on his yahrzeit

### **Essential Services Fund**

Alan and Patti Gruber & Sons

---in loving memory of Angela Klieback on her yahrzeit

Barbara and Jerry Kil

---in loving memory of Sherman Marcus on his yahrzeit

Bart D. Sayet and Lori Lindfors

---in loving memory of Mark Sayet on his yahrzeit

Betsy Eichholz

---in appreciation of High Holiday Services

Caren and Bob Linden and family

---in loving memory of Isidor Meckler on his yahrzeit

Debra Wool

---in appreciation of High Holiday Services

Elizabeth Friedman

---in appreciation of High Holiday Services

Elon Rosenberg

---in appreciation of High Holiday Services

Faye and Kenneth Somers

---in appreciation of High Holiday Services

Gary Baker

---in remembrance of my mother, Helaine Baker

Iris and Gary Freeman

---in memory of Alan Freeman on his yahrzeit

---in memory of Joseph Abrams on his yahrzeit

---in memory of Michele Abrams on her yahrzeit

---get well wishes to Marty Zeldis

---congratulations to Claire Warren on the birth of her  
new granddaughter, Olivia Zhao Shiling

Jo Michaelson

---in loving memory of Alvin Michaelson on his yahrzeit

Jonathan and Armi Rowe

---in memory of Don Bendick

---in memory of Susan Greenhalgh

---in memory of Richard O'Brien

---in memory of Mary Kelley Smith

Judy and Stephen Mann

---thank you for your help with my cousin

---with sympathy to Stephanie and Barry Thorp on the  
death of Stephanie's brother

Karen Dinsfriend

---in loving memory of Jack Dinsfriend on his yahrzeit

---in memory of Joel Dinsfriend on his yahrzeit

Kenneth and Kimberly Fischburg

---in loving memory of Jack Fischburg on his yahrzeit

---in honor of Dara Weber's marriage to Jeff  
Ritterband

---in honor of Yitzchak and Amanda Winograd's  
marriage

Leonard Massman

---thank you for all your kindness

Wendy Ladd

---in appreciation of High Holiday Services

---

### **Goldsmith-Kallan Fund**

Faye and Kenneth Somers

---in memory of Harriet Blumenthal

---in memory of Sheldon Blumenthal

---in memory of Edward Somers

---in memory of Barbara Somers

---in memory of Deborah Kelly

Lori Corah and Peter Marcus

---in loving memory of Sherman Marcus on his  
yahrzeit

### **Lothar Knobel Library Fund**

#### **Mitzvah Fund**

Michael and Florence Betten

---congratulations to Noah and Liang Shiling and  
grandma Claire Warren on the birth of Olivia  
Zhao Shiling

### **Prayer Book Fund**

Joan Levine

---in loving memory of Samuel Wertheim on his  
yahrzeit

### **Rabbi's Discretionary Fund**

Bruce Goldstein

Matthew Brody

Barry and Stephanie Thorp

---in loving memory of William Thorp on his yahrzeit

### **Religious School**

Matthew Shulman

Milton and Alisa Sheriff

***Please make checks payable to Temple Emanu-El and remit to PO Box 288, Waterford, CT 06385***



**RE/MAX<sup>®</sup>  
ON THE BAY**

**FOR ALL YOUR  
REAL ESTATE NEEDS**

Direct: 860-443-4400 Cell: 860-625-5255  
Email: [Geoff@CallTheHouseMan.com](mailto:Geoff@CallTheHouseMan.com)  
Website: [www.CallTheHouseman.com](http://www.CallTheHouseman.com)  
Blog: [CTHouseMan.com](http://CTHouseMan.com)

**THE City NEVER SLEEPS!**

MYWHALINGCITY.COM • OPEN 24/7  
BROAD & COLMAN ST, NEW LONDON • 860.443.8361

MY WHALING City

860-443-CITY (2487)

**PsychologyCT.com**

**Schaperow Psychology & Associates:**  
Thorough diagnostic assessments; psychological testing; individual, marital, & family therapy.

**Drug & Alcohol Treatment:**  
Clinicians that specialize in drug & alcohol treatment.

**And:**  
**Cognitive Behavioral Therapy (CBT) Center:**  
Evidence-based CBT to improve mental health, and decrease stress for certain physical illnesses.  
860-447-2047 / [PsychologyCenterOffice@gmail.com](mailto:PsychologyCenterOffice@gmail.com)

**NEW LONDON  
SELF-STORAGE**

**CLIMATE CONTROLLED**

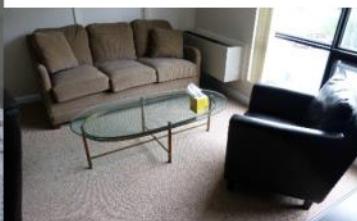
**860-442-0008**

[www.NLSelfStorage.com](http://www.NLSelfStorage.com)

*Conveniently Located Just Over  
the Waterford Town Line  
at 960 Bank St., N.L. behind Sign "A" Rama*

Brand New, Clean Facility  
24/7 Video Surveillance  
Secure Gate with Keypad Entry  
Month to Month Rentals  
Free "We'll Pick It Up" Service  
Locally Owned & Managed  
200+ Units - 6 Sizes, up to 10'4" ht.  
Climate Controlled Automobile Bays  
Boxes, Locks, Packing Supplies

Psychology CT LLC is **seeking renters**, as we have **beautiful offices available** in Waterford. These offices are perfect for professionals (e.g., therapists, massage therapists, small practice attorneys & accountants, certain kinds of physicians, etc.), especially those that don't need a reception area, but may still benefit from a waiting area. Please see <https://sites.google.com/site/schaperowpsychology/office> for details, or email [psychologycenteroffice@gmail.com](mailto:psychologycenteroffice@gmail.com) for more information. PsychologyCT.com





TEMPLE EMANU-EL  
PO BOX 288  
WATERFORD, CT 06385

Please use PO BOX 288 WATERFORD, CT 06385  
when mailing material to the temple

Non-Profit  
Organization  
U.S. Postage PAID  
New London, CT  
06320  
Permit #480

**Deadline for November 2021 Bulletin is Friday, Oct. 15**

Email your articles to Roberta at [office@tewaterford.org](mailto:office@tewaterford.org)

CHANGE SERVICE REQUESTED

## Our Leadership

**Rabbi** / Marc Ekstrand / [rabbi@tewaterford.org](mailto:rabbi@tewaterford.org)  
**Rabbi Emeritus** / Aaron Rosenberg / [arloveskr@aol.com](mailto:arloveskr@aol.com)  
**Cantorial Soloist** / Sherry Barnes /  
[cantorialsoloist@tewaterford.org](mailto:cantorialsoloist@tewaterford.org)  
**President** / Andy Parad / [president@tewaterford.org](mailto:president@tewaterford.org)  
**1<sup>st</sup> Vice President** /  
**VP of Building and Grounds** / Russell Sheikowitz /  
[buildingsgrounds@tewaterford.org](mailto:buildingsgrounds@tewaterford.org)  
**VP of Religious Practices** / Claire Warren  
**Treasurer** / Thomas Smith / [treasurer@tewaterford.org](mailto:treasurer@tewaterford.org)  
**Vice Treasurer** / Bruce Goldstein  
**Recording Secretary** / Marcia Reinhard  
**Corresponding Secretary** / Deborah Linder  
**Immediate Past President** / Jo-el Fernandez  
[pastpresident@tewaterford.org](mailto:pastpresident@tewaterford.org)  
**3 Year Trustees:** Michael Barnett, Michele Caton, Amy Orce,  
one unfilled  
**2 Year Trustees:** Robbin Alpert, Susan Cramer, Amy Perry,  
Shoshana Weiss  
**1 Year Trustees:** John Murphy, Irene Brickman-Smith,  
Gail Weber, Scott Wolfe

**Membership Co-Chairs** /  
**Social Action Chair** / Marty Zeldis  
**Sisterhood** / Gail Weber & Barbara Senges/  
[sisterhood@tewaterford.org](mailto:sisterhood@tewaterford.org)  
**Gift Shop** / Susan Hausmann / [judaicashop@tewaterford.org](mailto:judaicashop@tewaterford.org)  
**Brotherhood** / [brotherhood@tewaterford.org](mailto:brotherhood@tewaterford.org)  
**Kitchen Committee Chair** / Edee Smith  
**Religious School Administrator** / Rachel O'Brien /  
[religiousschool@tewaterford.org](mailto:religiousschool@tewaterford.org)  
**Office Administrator** / Roberta Reisner-Winograd /  
[office@tewaterford.org](mailto:office@tewaterford.org)  
**Webmaster** / Aaron Kaplan / [webmaster2@tewaterford.org](mailto:webmaster2@tewaterford.org)  
**Custodian** / Don Kasper  
**Bulletin Editor** / Mimi Perl  
**Location:** 29 Dayton Road, Waterford, CT 06385  
**Mailing Address:** PO Box 288, Waterford, CT 06385  
Office: **860-443-3005**  
Religious School: **860-443-3005**  
Website: [www.tewaterford.org](http://www.tewaterford.org)