



Rabbi's Message - Marc Ekstrand

Friends,

Just a few weeks ago, we witnessed yet another act of violence in a house of worship—this time at Congregation Beth Israel in Colleyville, TX. I know you join me in gratefulness that all four hostages are now safe. May their unseen wounds heal over time.

At this point, we have heard many details of this incident. I have taken part in a new wave of webinars about security in houses of worship. Colleyville is indicative of two things. First, a small congregation should never consider itself 'off the radar' of would-be attackers. Second, attacks like Colleyville are extremely rare. Both should inform how we think about the safety and security of the Temple. We don't need to live in a constant state of fear, yet we need to take measures to prepare.

We don't fully understand the attacker's motivations, and likely, we never will. Yet it seems that he specifically chose a Jewish house of worship. Whatever other reasons the attacker had, he went out of his way to find Jews to terrorize. His specific targeting of Jews makes Colleyville an anti-Semitic attack. To say otherwise is to downplay the resurgence of anti-Semitism around the nation and the world. Yet we must acknowledge how blessed we are to live in a nation and generation where we are embraced, respected, and protected by our friends, neighbors, and government.

Not so long ago, a standing-room-only crowd filled our sanctuary and social hall in response to the Tree of Life attack in Pittsburgh. Nonetheless, simply because we are Jews, we are a target of hate. Colleyville demonstrates that we must prepare. Preparedness saves lives.

Just as we recognize this act of hate as anti-Semitism, we must also understand this incident within the context of an alarming increase in all hate crimes. Hate crimes have been at their highest level since 2008. FBI data indicate increasing trends in hate crimes against not only Jews but also Muslims and the LGBTQ community. Further, race-related hate crimes have always been the largest category. We must stand in solidarity against all forms of hate.

In the coming weeks and months at Temple Emanu-El, we will be reviewing our security plans. Security review is a never-ending process. I will be working with Rich McCaffrey and our security committee to train our greeters better. Our security committee will be moving ahead with infrastructure improvements funded by our security grant award. Greeters are critical to our mission, not just for security but, even more importantly, for creating a welcoming feeling when we must keep our doors locked.

Lastly, the true solution to hate crimes will not come through increased security, better intelligence, or improvements in law enforcement techniques. The solution will only come through a transformation of hearts and minds. We must transform hate into love and understanding. The central verse of the Torah is traditionally understood to be Leviticus 19:18, which contains the phrase, "Love your fellow as yourself." As we look for new ways to protect against acts of hate, we must be even more committed to loving our fellow. For every door we lock and window we strengthen, we must look for new ways to break down barriers and build bridges of understanding. Transforming hate into love is not a Pollyannaish fantasy; it is a moral imperative.

L'shalom,

Rabbi Marc



President's Message - Andy Parad

I guess we shouldn't be surprised by the unexpected by now. Hence the phrase: Expect the unexpected. In the military we used to be told by our superiors: Semper Gumby. We knew to always be prepared. But when things didn't go as planned we were also reminded to always be flexible. And that's pretty much what we've been doing. Rabbi Marc and Sherry have done a phenomenal job of changing course on the fly and dealing with the hand they are dealt. They have seamlessly transitioned back to virtual and have had several meaningful services including another wonderful First Friday Share Shabbat.

Despite the challenges, the Sisterhood has been doing an amazing job of bringing people together. I won't repeat all the highlights here, but they have managed to fill the calendar with a mix of online and in person social events to be admired. Unfortunately, the Brotherhood has fallen behind. Much farther behind. We are still looking for a President of the Brotherhood as a place to start. From there hopefully all will be downhill. We had a few projects in the fall so I know the brothers are still out there. With the current bagel uncertainty, more creativity is needed.

Also, as we will (hopefully) be re-entering the building around the time of this Bulletin article, we will need Shabbat greeters. This is important from both a welcoming perspective and also for security. If you are interested in becoming a greeter please let myself or Claire Warren know or just email the Temple office.

The Board is working diligently on updated financial plans. We hope to detail those plans in the next few months, so keep an eye out for additional information to follow.

Andy



Notes from Sherry Barnes



To borrow Rabbi Marc's line about Cabaret, it's time to "Get your act together!" We are a month away from our 8th Cabaret! Armi and I decided to move this event, which was scheduled for this month, to next month, on March 5, at 7:00 p.m. We really wanted to increase

the chance of having this fun-fund raising event in person. So, please send either Armi or myself an email letting us know what you would like to do! I know some of you sing, play instruments, do dance routines, comedy acts, and read or write poetry or short stories. We've had some wonderful shows in the past and I'm sure this year will be the same. Each act has up to 5 minutes to perform their piece for the show. Looking forward to hearing from you!

Thank you to Jeff Elkin for chanting Torah with me on Shabbat Shirah. We figured that we have been chanting this portion of B'shalach, Song of the Sea, for over 20 years. It's always a pleasure to have Jeff chant. Jeff will also be chanting Torah for Shabbat on February 11.

If you are interested in chanting Torah, contact me or Rabbi Marc.

At the Shabbat Shirah service, we also welcomed Emma Zelkin into our community and our Temple Emanuel family as a Jew. I met Emma during the beginning of the pandemic, when Rabbi Marc told me that she was interested in learning to read Hebrew. She learned basic Hebrew and made it look easy. She's now in the intermediate class and continues to make it look easy. I, and also Emma's classmates, were very proud of her as she was called to Torah and read the blessings. This was one of those moments that make life beautiful. Emma, may you continue to learn about Judaism and the beauty and wisdom it holds. B'ruchah Haba'ah, welcome, Emma.

B'shir,

Sherry



Sisterhood -- Gail Weber & Barbara Senges, Co-Presidents

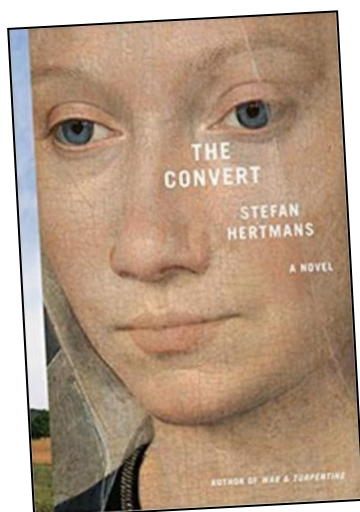
Hi Ladies,

We hope everyone is doing okay. Between the cold winter months and dealing with the Omicron variant, there are many challenges, and we are doing our best to find ways to keep us all connected.

Our weekly walks on the Niantic Boardwalk have been fun. We meet at 10:00am on Wed and Thurs mornings and walk the 2 miles of the boardwalk. What a great way to get in your steps and catch up with other women. Check your email for updates – on bad weather days, we plan on meeting at the Crystal Mall.

Barbara Senges is putting together some great questions for our always popular **Trivia Night on Wednesday, Feb 23 at 7:00pm**. Again, this is a Zoom only event.

Our own **Janine Sitko and Barbara Wolfe are chairing the Shalach Manot fundraiser for the temple**. You can find a flyer with additional information in this bulletin. Thank you both for stepping up! Looking forward to the tasty treats!



For those of you who are looking for a good book to read, **"The Convert" by Stefan Hertmans**, will be discussed during our next Book Club on **Sunday, March 6 at 2:00pm on Zoom**. Cecile Feldman always does her research and leads great discussions. Come join us!

We are in the process of planning a Regional Book Club event on **Wednesday, May 18 at 7:00pm on Zoom**. Sheila Horvitz, host of

the local TV show Talk Back with Sheila Horvitz, and Cecile Feldman will interview Victoria Riskin, author of the book **"Fay Wray & Robert Riskin: A Hollywood Memoir"**. We are looking forward to this event.

Eileen Shapiro is the coordinator of the Friendly Visitor Program for JFEC. Sisterhood, along with JFEC, distributed Chanukah bags to residents in our community who are in nursing homes and independent living facilities. The recipients loved receiving these special bags; we will do this again for **Purim & Passover**. So many of you volunteered in December with stuffing and deliver-

ing bags. We thank you and look forward to having you help us again!

Details are still being worked out for a joint Women's Seder with Hadassah. Watch your emails for more information.

Last year, we mentioned all of the on-line programming available through our umbrella organization, WRJ. If you check their website, wrj.org, you will see their calendar filled with speakers, tours, etc. Hope you can take advantage of some of their programs.

We work very closely with the Re-Entry committee at the temple. As soon as we get the go-ahead to plan in-person activities, you will hear from us! Until then, we look forward to seeing you on Zoom or on our walks.

Let us know if you have any suggestions for future programs. We love hearing from you.

Gail Weber & Barbara Senges, Co-Presidents

MAH JONGG CARDS

Big thank you to all of you who ordered 2022 Mah-Jongg cards, and hat's off to those of you who collected orders from your groups of friends and those outside the Temple Emanu-El family. Our outside sales continue to fuel this fundraiser. You should receive your cards in the mail in late March. After months of "on again, off again" in person games, if you are like me, you are anxious to really USE them this year!

Thanks for your support!

Iris Freeman

860.460.3081

ifreegang@aol.com



HELP RUN THE TEMPLE EMANU-EL GIFT SHOP

It is time for someone to take the reins for the Gift Shop. It has been suggested to me that I should briefly describe what this entails.

The primary responsibilities are to purchase merchandise for the gift shop and pay the bills. The checkbook takes very little time. Your

CONTINUED ON PAGE 4

Sisterhood -- continued from page 3

home bills probably take more time. The remainder of what you do is how you personally want to proceed. I have the inventory on an Excel spreadsheet, but that is not a necessity. The reality is that the most work is planning the Hanukkah Fair and the Sisterhood members are always a tremendous help.

There could be a small group of 2-3 ladies who would enjoy working together. This way it would not be too time consuming. During my time at the Gift Shop, I have met a number of congregants and I have been

invited to many events. It is very rewarding to help our members, especially our B'Nai Mitzvah parents.

This is a very quiet time of year, so it is a perfect time to touch base with me to learn more about this wonderful experience. Please contact me at susanhausm@gmail.com.

Thank you,

Susan Hausmann

Temple Emanu-El Religious School (TERS) - Rachel O'Brien

It's hard to believe that we've already reached the halfway mark for this school year! We are enthusiastically diving into the second half of the year with many new things to learn and numerous holidays to celebrate together.



In January we celebrated Tu B'Shevat. At TERS we think of Tu B'Shevat as a sort of Jewish Earth Day. The Torah teaches us not only to be good to each other but also to care for the environment that we were given. To help celebrate Tu B'Shevat on Sunday, January 16 Temple Emanu-El hosted a very special Tu B'Shevat program called Honey & More. **Thank you Armi Rowe** for organizing such an amazing program. The students enjoyed learning everything there is to know about the honeybee and how they impact the earth. The kids walked away with honey sticks and a delicious honeycomb they could enjoy at home.

January's First Friday Family Share Shabbat was held virtually last month, and we had a great turnout. It was amazing to see our students and their families come together and be part of our Shabbat service. Remember if your family and/or student would like a part of our Family Share Shabbat services, parts are made available a week or two in advance, on Sunday prior to our first Friday service that occurs directly after religious school. You can also email me or the Rabbi to claim your part of the service.

This month we hope you will join us for **First Friday**

Share Shabbat on February 4 at 6:30pm. Please email me if you do not have your part yet. Once more we will be virtual, but our hopes are to be back in our sanctuary

moving forward.

One of our goals at TERS is to create a strong sense of Jewish community for all our students and their families. In support of this goal the Religious School Committee and I organized a Sunday Family Funday event on January 2^d, together with the Jewish Federation of Eastern Connecticut Junior Youth Group, at the Rose-Garden Ice Arena. We had a nice turnout and the kids had tons of fun ice skating and drinking hot chocolate. It was a wonderful opportunity for students and family to connect and get to know each other better. Our next event will be in March so please keep an eye out for details and join us.

Although spring is getting closer, we're not there yet! I will notify parents through a Remind app text for Sunday closures. If you have not downloaded this app yet I will be sending instructions on how to do so. I will do my best to decide by Saturday night if Sunday classes will be cancelled due to inclement weather.

All the best,

Rachel

Events & Service Schedule

February 2	Wed.	10:00 P.M.	Walk w/Sisterhood
February 3	Thur.	10:00 P.M.	Walk w/Sisterhood
		1:30 P.M.	Music and Musings
February 4	Fri.	6:30 P.M.	Share Shabbat
February 5	Sat.	7:00 P.M.	Havdalah on Zoom
February 9	Wed.	10:00 A.M.	Walk w/Sisterhood
February 10	Thur.	10:00 A.M.	Walk w/Sisterhood
		1:30 P.M.	Music and Musings
February 11	Fri.	7:30 P.M.	Kabbalat Shabbat
February 12	Sat.	7:00 P.M.	Havdalah on Zoom
February 16	Wed.	10:00 A.M.	Walk w/Sisterhood
February 17	Thur.	10:00 A.M.	Walk w/Sisterhood
		1:30 P.M.	Music and Musings
February 18	Fri.	7:30 P.M.	Kabbalat Shabbat
February 19	Sat.	7:00 P.M.	Havdalah on Zoom
February 23	Wed.	10:00 P.M.	Walk w/Sisterhood
		7:00 P.M.	Sisterhood Trivia Night
February 24	Thur.	10:00 A.M.	Walk w/Sisterhood
		1:30 P.M.	Music and Musings
February 25	Fri.	7:30 P.M.	Kabbalat Shabbat
February 26	Sat.	7:00 P.M.	Havdalah
March 2	Wed.	10:00 A.M.	Walk w/Sisterhood
March 3	Thur.	10:00 A.M.	Walk w/Sisterhood
		1:30 P.M.	Music and Musings
March 4	Fri.	7:00 P.M.	Share Shabbat
March 5	Sat.	7:00 P.M.	Cabaret and Havdalah – Hybrid Event
			Must R.S.V.P. to receive zoom link for this fundraising event



Social Action -- Karen Bloustine & Sybil Nassau, Co-Chairs

A Note

To all of you
Who helped me out

I'm so appreciative
Of that
There is no doubt...

From soup to salad
a main course too
And even dessert
Was on the menu
And I want to thank you!

Every dish
Was absolutely delish

So the "meal train" worked
Out great
And I really enjoyed
Everything I ate
I also think I even gained a
Little weight!!!

Elsa Freedman



Condolences to...



**Sherry Wolfe,
Scott and Barbara Wolfe & family,**
on the passing of Sherry's husband,
Scott's father,
and Barbara's father-in-law,
Harold Wolfe.

Harold Wolfe, 95, husband of 72 years to Sherry died peacefully in the arms of Sherry Monday evening, January 17. Harold had two sons, 14 grandchildren, and 52 great grandchildren.

Mazal Tov to...



Emma Zelken
on her recent conversion
to Judaism



February Birthdays

Nicole Arruda
Harrison Howard Arruda
Spencer Bentley
Jacob Feinstein
Barry Feldman
Abraham Fisher
Casey Flax
Shayna Fox Norwitz
Elsa Freedman
Allison Sue Glickman
Amy Golden
Andrew Goldman
Helen Goldstein
Jack Haynes
Autumn Hicks

Viviane Holwitt
Peter Kallan
Jillian Kallan
Barbara Kil
Jerry Kil
Philip Krasney
Ben Lazarus
Harriet Lesko
Camden Levine
Jared Miah Linder
Regina Magnus-Aryitey
Lisa Marcus
Merrill Mazzella
Gregory Morea
Andrew Parad

Matthew Perl
Jacob Reinhard
Amanda Rowe
Mark Rubin
Ann Schwartz
Gregg Selke
Philip Shapiro
Alisa Sheriff
Milton Sheriff
Tracy Shoor
Ira Sitko
Jessica Sitko
Leslie Spees
Elisha Stavropolous
Pamela Stein Naccarato

Joel Suisman
Barry Thorp
Robert Trostler
Nancy Trostler
Kenneth Webman
Henry Weinberg
Sherry Zelvin
Amanda Zettler



February Anniversaries

**Rachel and Michael
O'Brien**

**Aaron and Karen
Rosenberg**

Milton and Alisa Sheriff

Donald and Lois Steinman

Norman Ruderman
Norman Schnur
Bessie Snitman
Henrietta Weber
Shelly Weinberg

February 11

Larry Axmaker
Dorothy Benmaor
Helene Bloom
Joseph Thomas Furman
David Hillsberg
Pauline Mann
Lillian Miller
Nathan Rubin
Sheldon Schlissel
Norma Selwyn
Louis Shoor
Paul Wharton

February 18

Samuel Cohen
Philip Crystal
Larry Cushman
Ruth Dunkerley
Iona Fridman
Eleanor Katz
William "Bill" Perry
Albert Punty

Victor David Rosen
Leo Scharfman
Fannie Schlissel
Harold Shapiro
Joseph Shepard
Mary Kelley Smith
Helen Stein
Benjamin Stricker
William Surnamer
Phyllis Thall
John Zarcheck

February 25

Irwin Braverman
Louis Brensilver

Rhoda Feinstein
Terri Goldsmith
Howard Helveston
Eva Isaacson
Carl Isaacson
Eva Kozek
Harold Margolis
Nathan Novar
Charles Reisner
Sidney Shanbrom
Leon Speevak
Elizabeth Weber
Jack Zavatsky
Phyllis Zettler

February Yahrzeits

February 4

Helen Arbetter
Miriam Shoor Ballot
Frances Bloomfield
Joan Cherry
Ruth Freeman
Glenn Gerber
Harold Goldman
Richard Grills
Gerhard Hausmann
Gladys Ilson
Flora Nassau



We are eternally thankful for the support of those below. . .

Endowment Fund

Lois and Stephen Panikoff

--in loving memory of Morris Kaplan on his yahrzeit

Essential Services Fund

Bruce Goldstein

Dr. Jean Lasser

Lasser Family Philanthropic Fund

Robyn Krasner

Armi and Jonathan Rowe

--in loving memory of my Mom, Alita Sevilla on her yahrzeit

Claire Warren

--in loving memory of Samantha and Randy Deglin on their yahrzeit

--in loving memory of Reuben Shiling on his yahrzeit

--in joyful celebration of Noah Shiling's birthday

--in honor of Liang Zhao's February 2 birthday

--in joyful celebration of Danny Shiling's birthday

--with sympathy to Susan Hausmann on the loss of her mother, Rosalyn Braverman

--congratulations to Gail and Steve Weber on Aaron's marriage to Jess Mayer

Deborah Linder

--in honor of Rabbi Aaron and Karen Rosenberg and their family for a good new year

Jane and Chic Weinberg

--in loving memory of Al Weinberg on his yahrzeit

Martin and Joanna Lazarus

--in loving memory of Murray Lazarus on his yahrzeit

Scott and Eileen Zelken

---celebrating Emma Zelken's conversion with happiness and pride

Isaaca Siegel Landscaping Fund

Judith and Stuart Deglin

---in loving memory of Randy Deglin on his yahrzeit

---in loving memory of Samantha Deglin on her yahrzeit

Mitzvah Fund

Leslie Spees

---for Elsa Freedman's speedy recovery

Michele and Harvey Snitkin

---in loving memory of Louis Snitkin on his yahrzeit

Prayer Book Fund

Joan Levine

---in loving memory of Jules Levine on his yahrzeit

---in loving memory of Grace Wertheim on her yahrzeit

Rabbi Aaron Rosenberg Tikkun Olam Scholarship Fund

Matthew & Florence Lewiss

---in loving memory of Lillian Gertz Lewiss on her yahrzeit

---in loving memory of Sylvia Lewiss on her yahrzeit

Norman and Betty Cooper

---in loving memory of Hannah Cooper on her yahrzeit

Rabbi's Discretionary Fund

Cheryl and Elwin Schwartz

---in loving memory of Ellen Schwartz on her yahrzeit

Please make checks payable to Temple Emanu-El and remit to PO Box 288, Waterford, CT 06385

Havdalah Programming - February 9

I hope that you have been able to join us on Zoom for our Havdalah Programming. In January, we followed Havdalah with a game of Things in Common, learned about growing Judean palm trees with 2000 year old seeds, went on a scavenger hunt, and discussed the Holocaust.

In February, we will have fun with Trivia, hear from a guest speaker, answer some funny questions, and play a game of "guess who". For this fun evening, we will need a picture of you between



the ages of 1-5, by **February 9**. You can take a picture of the photo you would like to use and email it to Barbara Sen- ges at professeur38@me.com I know that Barbara and I are looking forward to guessing which baby face is yours!

All programs are on Saturday evenings at 7:00 p.m. The

Zoom link will be in the Shabbat email that you receive on Friday afternoons.



Mishloach Manot Purim Bags

Purim is a time to celebrate our story of Esther. She was a heroine who allowed us to live during a time when Haman threatened our existence. Be happy. Celebrate with a Purim tradition of giving goodies to your friends. Participate in Temple Emanu-El's Mishloach Manot Fundraiser.



Mishloach Manot Bags will be available to be delivered to your door by temple volunteers.

Each bag will contain Purim goodies including a grogger and delicious hamantaschen.



Name: _____

Address for delivery: _____

Phone: _____

Enclosed is my donation (check one):

_____ \$180 to send a Mishloach Manot Bag to every congregant

_____ \$18 to send a Mishloach Manot Bag to myself

Please make checks payable to Temple Emanu-El.

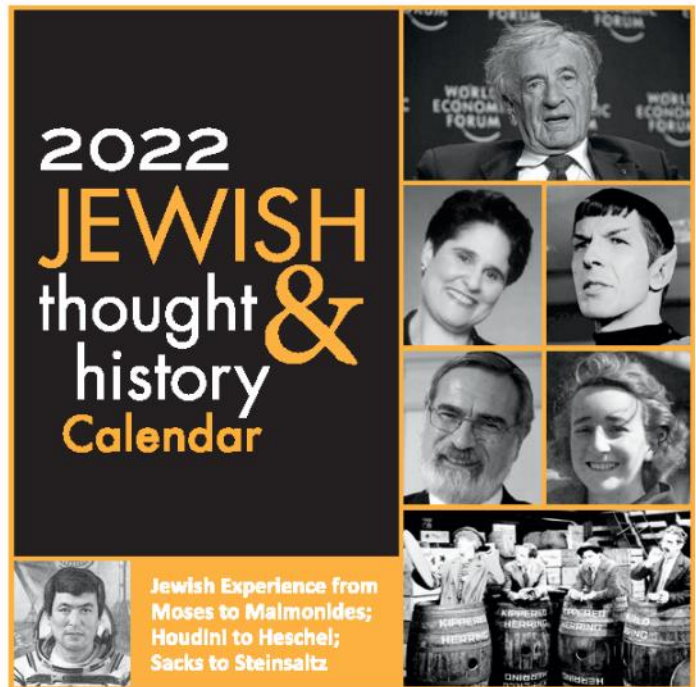
Send this completed order form with payment by March 11th to:

Temple Emanu-El
PO Box 288
Waterford, CT 06385



PURCHASE A 2022 JEWISH HISTORY CALENDAR

A perfect gift for yourself,
a friend, family member,
or neighbor.



TO PURCHASE: Please fill out the form below and fax or e-mail your form with payment to the Temple Emanu-El Office: fax 860-443-3069 or temanu-el@sbcglobal.net.

OR, fill out the form below and mail with your payment to Temple Emanu-El:
Temple Emanu-El, P.O. Box 288, Waterford CT 06385.

THANK YOU FOR YOUR CONTINUED SUPPORT

Deborah Linder • Corresponding Secretary and Fundraising Coordinator
Deborahlinder29@gmail.com • Cell phone 860-877-4255

Name _____

Address _____

Phone # to contact _____

Number of Calendars _____

Total Payment @ \$18.00 each \$ _____ if picked up in Temple office.*

*If home delivery is required please add \$7.00 to your order.

Type of Payment: Check or Credit Card

Credit Card # _____

Exp. Date _____ and SEC Code _____

\$36 suggested donation
RSVP (860) 443-3005

Havdalah Service
Variety Show
Keepsake gift

Benefits the
Essential
Services Fund



Eighth Annual
CABARET
NIGHT

Temple Emanu-El

29 Dayton Road, Waterford
& On Zoom

NEW
DATE! **SATURDAY, MARCH 5, 2022**
7:00PM



Music and Musings

Thursdays at 1:30 PM



Join Rabbi Marc and Sherry – We will bring just a little music, some thoughts from Jewish tradition, and then open discussion. The music and topics will change from week to week. We'll have musical guests from time to time. We invite you to share a composition or teaching of your own or suggest a guest. The topics of discussion are up to you. This is an in person gathering.

HOWARD ILSON MEMORIAL TEMPLE EMANU-EL DISTINGUISHED SERVICE AWARD

Nominations are now being accepted for the **Ilson Award**, which is given annually to a member who has contributed to Temple Emanu-El in an important way. The award is in honor of Howard Ilson, a former president of our Temple who died suddenly while in office.

Areas of service to consider include:

- ~ Years of service as an officer or Board member
- ~ Years as a committee chairperson
- ~ Years of service in auxiliaries such as the Religious School, Sisterhood, Brotherhood
- ~ Years of community service as a representative of Temple Emanu-El
- ~ Years of time and energy expended for the betterment of Temple Emanu-El

Nominations will be accepted until March 1. The award committee will then review the nominations, and the winner will be announced in the Temple *Bulletin*. The award winner will be honored at a Shabbat service, and his or her name will be engraved on a plaque on display in the Temple.

Please take the time to consider a worthy nominee. It is one way of thanking our members for volunteerism that often goes unnoticed. If you wish to nominate someone, please fill out the form and mail or e-mail. All nominations will be strictly confidential.

Howard Ilson Award Nomination Form

Name of person being nominated:

Name of nominator:

Summary of nominee's attributes and service to Temple Emanu-El must be completed for nominee's consideration. Please use a separate piece of paper to complete and send to:

Temple Emanu-El • P.O. Box 288 • Waterford, CT 06385
or temanu-el@sbcglobal.net



**RE/MAX[®]
ON THE BAY**

**FOR ALL YOUR
REAL ESTATE NEEDS**

Direct: 860-443-4400 Cell: 860-625-5255
Email: Geoff@CallTheHouseMan.com
Website: www.CallTheHouseman.com
Blog: CTHouseMan.com

THE City NEVER SLEEPS!

MYWHALINGCITY.COM • OPEN 24/7
BROAD & COLMAN ST, NEW LONDON • 860.443.8361

MY WHALING City

860-443-CITY (2487)

PsychologyCT.com

Schaperow Psychology & Associates:
Thorough diagnostic assessments; psychological testing; individual, marital, & family therapy.

Drug & Alcohol Treatment:
Clinicians that specialize in drug & alcohol treatment.

And:
Cognitive Behavioral Therapy (CBT) Center:
Evidence-based CBT to improve mental health, and decrease stress for certain physical illnesses.
860-447-2047 / PsychologyCenterOffice@gmail.com

**NEW LONDON
SELF-STORAGE**

CLIMATE CONTROLLED

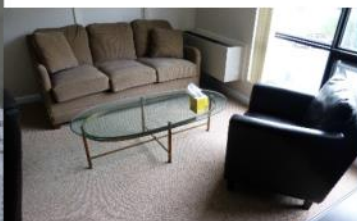
860-442-0008

www.NLSelfStorage.com

*Conveniently Located Just Over
the Waterford Town Line
at 960 Bank St., N.L. behind Sign "A" Rama*

Brand New, Clean Facility
24/7 Video Surveillance
Secure Gate with Keypad Entry
Month to Month Rentals
Free "We'll Pick It Up" Service
Locally Owned & Managed
200+ Units - 6 Sizes, up to 10'4" ht.
Climate Controlled Automobile Bays
Boxes, Locks, Packing Supplies

Psychology CT LLC is seeking renters, as we have beautiful offices available in Waterford. These offices are perfect for professionals (e.g., therapists, massage therapists, small practice attorneys & accountants, certain kinds of physicians, etc.), especially those that don't need a reception area, but may still benefit from a waiting area. Please see <https://sites.google.com/site/schaperowpsychology/office> for details, or email psychologycenteroffice@gmail.com for more information. PsychologyCT.com



TEMPLE EMANU-EL
PO BOX 288
WATERFORD, CT 06385

Please use PO BOX 288 WATERFORD, CT 06385
when mailing material to the temple

Non-Profit
Organization
U.S. Postage PAID
New London, CT
06320
Permit #480

Deadline for March 2022 Bulletin is Friday, Feb. 11

Email your articles to Roberta at office@tewaterford.org

CHANGE SERVICE REQUESTED

Our Leadership

Rabbi / Marc Ekstrand / rabbi@tewaterford.org
Rabbi Emeritus / Aaron Rosenberg / arloveskr@aol.com
Cantorial Soloist / Sherry Barnes /
cantorialsoloist@tewaterford.org
President / Andy Parad / president@tewaterford.org
1st Vice President / Armi Rowe
VP of Building and Grounds / Russell Sheikowitz /
buildingsgrounds@tewaterford.org
VP of Religious Practices / Claire Warren
Treasurer / Thomas Smith / treasurer@tewaterford.org
Vice Treasurer / Bruce Goldstein
Recording Secretary / Marcia Reinhard
Corresponding Secretary / Deborah Linder
Immediate Past President / Jo-el Fernandez
pastpresident@tewaterford.org
3 Year Trustees: Michael Barnett, Michele Caton, Jonathan Rowe,
one unfilled
2 Year Trustees: Robbin Alpert, Susan Cramer, Amy Perry,
Shoshana Weiss
1 Year Trustees: John Murphy, Irene Brickman-Smith, Janine
Sitko, Scott Wolfe

Membership Co-Chairs /
Social Action Co-Chairs / Karen Bloustine & Sybil Nassau
Sisterhood / Gail Weber & Barbara Senges/
sisterhood@tewaterford.org
Gift Shop / Susan Hausmann / judaicashop@tewaterford.org
Brotherhood / brotherhood@tewaterford.org
Kitchen Committee Chair / Edee Smith
Religious School Committee Chair: Sarah Selke
Religious School Administrator / Rachel O'Brien /
religiousschool@tewaterford.org
Office Administrator / Roberta Reisner-Winograd /
office@tewaterford.org
Webmaster / Aaron Kaplan / webmaster2@tewaterford.org
Custodian / Don Kasper
Bulletin Editor / Mimi Perl

Location: 29 Dayton Road, Waterford, CT 06385

Mailing Address: PO Box 288, Waterford, CT 06385

Office: **860-443-3005**

Religious School: **860-443-3005**

Website: www.tewaterford.org