



Rabbi's Message - Marc Ekstrand

Dear Friends,

On Monday, March 15, there was a peace vigil for Ukraine at the Soldiers and Sailors Monument in downtown New London. The Greater New London Clergy Association (I am co-chairperson) and the Southeastern Connecticut Ministerial Alliance (under the leadership of Pastor Michael Cagle of Walls-Clarke AME Zion Church in New London) collaborated to bring the vigil together. We had important support from the City of New London, Mayor Michael Passero, and many others. Under the leadership of Pastor Jesus Garcia, the Church of the City also joined our vigil, having planned (and postponed) their own vigil planned for the previous Saturday. Our special guest speaker was Father Cyril Manolev of the Ukrainian Catholic Church in Colchester. The vigil pulled together our community in solidarity.

Pastor Michael Cagle and I composed a Peace Prayer together for the vigil. Although it is not the first time the Ministerial Alliance and Clergy Association joined together in a collaborative effort, it has been many years. Because of our busy schedules, it was hard for us to find time to sit together. We met via Zoom on Shabbat morning. I usually would not schedule any work meeting on Shabbat morning. Indeed, it was Shabbat, but this was certainly not 'work.' Instead, it was an encounter of two brothers of faith that intensified the meaning and aspiration of Shabbat itself. Here is the **Peace Prayer** we presented at the vigil:

*If we are so fortunate,
We wake up in the morning refreshed
a hot cup of coffee
Food on our table
Clothes on our back
Shoes on our feet
And a roof over our heads*

... If we are so fortunate.

*The people of Ukraine wake up in a nightmare
exhausted
If they even go to sleep
Gunfire,
bombing,
And the cry of death.*

*Here we struggle against racism,
All forms of senseless hatred,
injustice,
and poverty.*

*They are fighting a war,
For their very lives,
For liberty,
democracy,
and peace.*

*Let us come together as brothers, sisters, and
siblings
God cries out to us,
Where are you?
We must respond,
Here I am
let my people go
I am my brothers' keeper
I am my sisters' keeper
I am my siblings' keeper
United and committed
To peace on earth
And justice for all.*

Although our prayers were entirely directed toward suffering in Ukraine, it is significant that our two associations came together at this moment. Pastor Cagle and I interlaced our voices, line by line, to emphasize our togetherness. We recognize that our communities are far too fractured in a multiplicity of ways. We know

CONTINUED ON PAGE 2

Rabbi's Message continued from page 1

we must be intentional in efforts to bring our communities together, acting with love and understanding in our hearts. God cries out to us, Jew and non-Jew alike, and asks, 'where are you?' We must respond, I am my siblings' keeper, and I stand in relationship with them. I am not free until they are free; I will not have peace until all have peace. As we look for ways to reach out and help those suffering in Ukraine, let us also intentionally build relationships of understanding here at home.

L'Shalom,

Rabbi Marc

President's Message - Andy Parad

As I write this, spring is just getting started. Hopefully by the time you read this spring will be in full bloom. Between that and the COVID rates finally dropping, there is hope in the air. Hope that things will return to some sense of normalcy. Yes, we will likely always have Zoom as part of our lives going forward. But is that such a bad thing? Sometimes it's just easier. Especially on those cold winter nights when it's tough to muster up the extra layer.

With returning to normal, the Board is planning several creative ways to help bring people back into Temple life. I can't go into the details just yet, but keep your eyes on your emails for some new events over the next 4 to 6 weeks (and hopefully past that once we really get going). We've been waiting about two years to do normal things and hopefully we are about there.

Along those lines, I was looking at dead mulberry tree #2 near the ark and trying to envision – well, an alive tree of some sort. The longer story is, back in the fall of 2019 the Rabbi asked me to look into planting at least one tree (the initial plan was two, and I dug two good size holes but learned that Waterford doesn't map its sewer lines, well, at all; so we ended up with one. There is a longer story there). So I ordered the largest

mulberry tree I could find. A 7-8 footer about an inch across. The plan was to make it a spring (of 2020) event for the Sunday school kids. What was going to be a big event ended up a bit quainter.

So in short, I found the best soil to give mulberry #1, watered at least weekly. And watched as it didn't leaf out at all. Fortunately I was able to get a replacement for the spring of 2021. Unfortunately I wasn't here but a fellow Congregant was kind enough to replant the new tree and take care of it much how I did. Only to have the same fate. So now mulberry tree #2 is also a dead stick in the ground.

I've been contemplating what to put there. A shade tree that makes fruit for people and animals alike would be ideal. A dwarf apple tree? Not enough shade. A giant oak tree? No fruit. If only I could get a mulberry tree to grow there. Maybe just a different species or from a different grower. So I'll continue to contemplate. If there are any arborists out there who want to take a crack at it with me, please let me know. It's a great spot to have a great tree for future generations to enjoy.

Andy

Notes from Sherry Barnes

This month we will come together with family and friends to celebrate Passover. Passover is known by many names, Chag heHaviv, the festival of spring, Chag hamatzot, the festival of Matzot, and most importantly, Z'man cherutainu, the time of our freedom. I can already see Spring coming to my flower beds, as the Irises have already come up. At Temple Emanu-El, the yellow flowers that we planted 6 years ago in memory

of the children perished in the holocaust, are beginning to blossom. It even seems like the birds are singing more. It's time to fling open the windows and let in the fresh air to push the stale air of winter out!! I have bought my 5 lbs of matza and am very much looking

CONTINUED ON PAGE 3

Notes from Sherry Barnes *continued from page 2*

forward to our first in-person seder in two years. This year we will be at Langley's in Waterford for our seder. I hope that you will join us. The last would be the season of our freedom.

We are blessed to be living in a country that is free from war, but those living in Ukraine are not as fortunate. They are fighting to keep the freedom that they have known for 30 years. My heart goes out to the people of Ukraine. I've watched many tear stained faces tell their stories and express their fears and sadness, as Russia bombs the country and tries to close the doors on weapons coming into the country from NATO allies to help them continue their freedom fight. Many of us have Ukrainian ancestry. As much as I am saddened by the bombing of hospitals, schools, and apartment buildings, I am also in awe and filled with admiration for the many Ukrainians that are defending their country, their right to freedom in their own land.

On this year's seder plates, maybe add a sunflower,

Ukraine's national flower, to remind us how precious freedom is. May the day come when weapons disappear from our countries and only peace remains among the inhabitants of our world and may the only thing we throw at each other be kisses. Oseh shalom bimromav, hu ya'aseh shalom, v'al kol Yisrael, v'al kol yoshvei teiveil. May the one who makes peace in the heavens, make peace upon all Israel and upon all the inhabitants of our beautiful planet. Chag Pesach Sameach!

Friday, April 1, Pat Sher will be chanting Torah. Thank you to Jeff Elkin for chanting Torah last month.

Sunday, April 10, Please make sure to join as we welcome everyone at our Temple Emanu-El Homecoming event! Lots of wonderful things going on to welcome you back to your home away from home. Check the bulletin for more information.

B'shir, **Sherry**

Sisterhood -- Gail Weber & Barbara Senges, Co-Presidents

So ladies; we got through another winter. We hope you were able to take advantage of some of the programs we planned for you. Our **Wed and Thurs walking groups** continue to gain momentum. In one hour, we feel like we have gotten our steps in for the day and had a chance to connect with another friend. It's always worth the effort.

We would like to **welcome Gail Schor** to the Sisterhood board. She is our new Corresponding Secretary and will continue the wonderful tradition of sending out note-cards for both happy and sad occasions. Thank you to Emily Lerner who has filled that role for the past several years. We appreciate all that she did!

April is turning into a very busy month. Our **March book club was re-scheduled for Sunday, April 10 at 2:00 pm**. We are hoping this can be a hybrid event. There is still time to read the book: **"The Convert"** by Stefan Hertmans. Cecile Feldman will again lead the book club and bring pertinent background information to this discussion. Come join us even if you haven't read the book. Maybe you will want to add it to your reading list.

Sisterhood will be joining with Hadassah for a **Women's Seder on Monday, April 11**. Please check your emails and temple website for more information.

Eileen Shapiro has expanded the **JFEC Friendly Visitor Program** to include other local synagogues. We will be looking for volunteers to help assemble and deliver bags for Passover to Jewish residents at care facilities and independent facilities. If you are available, please arrive at the temple at **10:00am on Thursday, April 11**. This is a mitzvah project which is appreciated by so many people. Hope you can help!

Some May dates to mark on your calendars:

Our **Sisterhood Shabbat Service**, which usually takes place the weekend of Mother's Day, will be on **Friday, May 13** this year.

Our **Regional Book Club** event will be held on **Wed., May 18 at 7:00 pm on Zoom**. Please join us for An Evening with Victoria Riskin, author of Fay Wray & Robert Riskin, A Hollywood Memoir. This promises to be a great evening. For your convenience, there will be 2

CONTINUED ON PAGE 4

Sisterhood -- continued from page 3

copies of the book available to borrow at the temple. Call Roberta in the office to coordinate.

And finally, a big thank you goes to Kim Fischburg for opening her home to us for our **End of the Year Paid Up Membership Dinner on Thursday, May 19.**

Looking forward to seeing everyone soon. Let us know if you have ideas or suggestions. That's how these programs get started!

Take care,

Barbara Senges & Gail Weber

Co-Presidents

TEMPLE EMANU-EL GIFT SHOP

The time for Passover has arrived. The Gift Shop is stocked with seder plates, Haggadahs and more. Please check the Gift Shop website to see our selection of items. There is a link right on the Temple Homepage.

With the Temple opening up more, we are going to celebrate our B'Nai Mitzvah congregants. The gift shop has a selection of tallit for them. As opening rules evolve, I will keep you posted on times the shop is open. Please don't hesitate to contact me for an appointment.

On June 30, my tenure in the gift shop is coming to an end. During this time, I have been enriched by the contacts and friendships I have made. I have met so many members of the Jewish community that I may have never met before. It really is very little work and what you get is so much more than what you put in. Please consider helping to run the gift shop.

You can always reach me at judai-cashop@tewaterford.org.

Susan Hausmann

Temple Emanu-El Religious School (TERS) - Rachel O'Brien

Happy Spring Everyone!

It was once again a joy to gather with our religious school families during the First Friday Share Shabbat that was held on March 3rd. We had a nice turnout with

families joining in on Zoom since we were not quite back in our synagogue yet. **We hope to see you all again at our First Friday Share Shabbat on April 1 at 6:30p which will be held in person AND on Zoom.** Students and their family can sign up for a part in the Shabbat service starting two weeks prior through Signup Genius. Please contact me or Rabbi Ekstrand for the link.

On Sunday March 20, our religious school students and families enjoyed a school-wide Family Purim celebration. It was the first event since school began that we welcomed parents and family to join us in the temple so we could celebrate the holiday as a community. The day started off with our annual costume parade, and prizes were awarded for most creative, most colorful,



most original, and best Purim themes costumes. The 8th graders, with the help of our younger TERS students, performed a Purim spiel, **THANK YOU Barbara Senges and Avery**

Holwitt for helping organize and direct "Esther and the Big Bad Wolf". Students paid close attention for every opportunity to sound their loud, original, and obnoxious groggers!

Thanks to, Sean Bendict, for taping the spiel. If you were unable to join us and would like to watch your student's performance, please contact me for the link.

Our Purim celebration concluded with Magic by Derek, a comedy magic show that entertained both parents and kids. As the students were dismissed, they were gifted Mishloach Manot bags that were filled with yummy treats and of course Hamantaschen from New York City! **A special thank you to the Sisterhood for**

Continued on page 6



TEMPLE EMANU-EL'S



Homecoming

Sunday, April 10, 12:30 pm

Let's gather to enjoy each other's company, socialize, and make new acquaintances in our sacred community space.

12:30 Special Temple announcements

1:00 Our first **Member Spotlight Series** event featuring artist and designer **Pat Sher's mini-exhibition of her Fiber Art Torah Covers.**

2:00 Temple Committee activities, Sisterhood Book Club, and Mitzvah projects within our building and grounds.

3:00 Let's conclude our Temple family's reunion over an **outdoor BBQ** after the activities!

RSVPs appreciated to help estimate food.

Please call Temple Office (860) 443-3005

Temple Emanu-El Religious School (TERS) continued from page 4

organizing these bags for our students.

Looking ahead, on April 3 our 8th grades students will take part in a very special program led by Nazmi Ojeda, a Safe Futures Director of Education and Community Engagement. Safe Futures is Southeastern Connecticut's response to domestic violence. Part of their response is educating community members to recognize healthy and unhealthy relationships to stop domestic violence before it occurs. The program is specifically intended for this age group and focuses on developing skills that will help our 8th grade students recognize qualities of

safe, respectful, healthy relationships as well as to identify warning signs of unhealthy relationships.

After class on April 3 TERS has another Sunday Family Funday event. Students and their families will be going to the Coast Guard Academy Bowling Alley for bowling and ice cream. If you have yet to RSVP for this

event, there is still time to do so. Contact me at religiousschool@tewaterford.org. Kids bowl for free and we will be creating our own ice cream sundaes. We are expecting another great turnout and look forward to all our TERS families joining us.

Lastly, on April 10 TERS will be holding a Passover Seder followed by fun and enriching activities to help students understand the components, order, and meaning of Passover and the Passover seder.

Also on April 10 TERS families are encouraged to stay for the Temple Emanu-El Homecoming events starting at 12:30 P.M.

Due to Spring Break, there will be no religious school on Sunday, April 17, 20, and 24. Religious school will resume on Sunday, April 27. Enjoy the break!

L'hitraot,

Rachel

Social Action - Karen Bloustine & Sybil Nassau, Co-Chairs



Alert for Temple Emanu-El Members

Here are new volunteer opportunities.

Start Fresh needs drivers and child care helpers IMMEDIATELY.

Drivers usually take family members to Dental, Medical, job related or social service agency appointments. We try to schedule these appointments so drivers can be notified about 5-7 days ahead of time.

Child care is needed to watch children ages 3, 4, and/or 7 in order for parents to be able to focus on those appointments.

PLEASE contact Karen Bloustine, bloustinek@gmail.com or Sybil Nassau, sybil.Nassau@yahoo.com with any questions and to let us know what you can do to help. We are looking forward to hearing from YOU.

Mazal Tov to . . .



Leslie Spees

of Noank, CT on the birth of her grandson,

Olin Carl Howard Spees,

born March 17 to

Erin and Jeff Spees

of Burlington, VT.

Erin's parents are **Grace and Randy Fuller**

of New York. Erin is a pediatrician and

Jeff is a research scientist at University of Vermont.

Events & Service Schedule

April 1	Fri.	6:30 P.M.	Share Shabbat Patricia Sher Chanting Torah
April 5	Tues.		Passover Seder R.S.V.P. deadline
April 6	Wed.,	10:00 A.M.	Walk w/Sisterhood
April 7	Thur.,,	10:00 A.M.	Federation Friendly Visitors Program Help put together Passover bags
April 8	Fri.	7:30 P.M.	Kabbalat Shabbat
April 10	Sun.	12:30 P.M.	Temple Emanu-El Homecoming to include Judaica Exhibit by Pat Sher
		2:00 P.M.	Sisterhood Book Club "The Convert" by Stefan Hertmans
April 11	Mon.	TBD	Sisterhood/Hadassah Women's Seder
April 13	Wed.,	10:00 A.M.	Walk w/Sisterhood
April 14	Thur.	10:00 A.M.	Walk w/Sisterhood
April 15	Fri.	6:00 P.M.	Temple Passover Seder at Langely's at Great Neck Country Club RSVP by April 5
April 20	Wed.,	10:00 A.M.	Walk w/Sisterhood
April 21	Thur.	10:00 A.M.	Walk w/Sisterhood
April 22	Fri.	7:30 P.M.	Shabbat Service including Yizkor
April 24	Sun.	10:00 A.M.	Join - Baking Club
		12:00 P.M.	Walk to End Homelessness
		2:00 P.M.	Community Henny Simon Yom Hashoah Remembrance
April 27	Wed.,	10:00 A.M.	Walk w/Sisterhood
April 28	Thur.	10:00 A.M.	Walk w/Sisterhood
April 29	Fri.	7:30 P.M.	Shabbat Service, Yom Hashoah Remembrance

A group of us at Temple Emanu-El are starting a Baking Club



LET'S LEARN HOW TO BAKE
JEWISH TREATS TOGETHER
FIRST MEETING
SUNDAY, APRIL 24 10:00 AM
TE SOCIAL HALL
QUESTIONS?
CALL 860.443.3005

April Birthdays

Gwenyth Wolf Arruda
Jon Arruda
Sean Bendick
Rabbi Polly Berg
Thomas Blum
Lori Corah
Mark DeBruyn
Rabbi Marc Ekstrand
Zoe Feinstein
Savannah Feinstein
David Feldman
Gary Freeman
Myra Gipstein
Hillary Goldstein

Bruce Goldstein
Jacob Goldstein
Violet Greenmoor
Norma Hollandersky
Avery Holwitt
Barbara Kallan
Zachary Kanfer
Bethany Kanfer
Ellanora Lerner
Rachel Levine
Hannah Rae Linder
Peter Marcus
Anthony Mazza
Emilia Osovsky

Stephen Panikoff
Adrienne Parad
Jillian Parad
Sheri Pascal
Edward Perry
Amy Perry
Michelle Pievsky
Carl Rosen
Aaron Rosenberg
Bart Sayet
Rosa Schaperow
Patricia Sher
Jennifer Skill
Michele Snitkin

Karl Solomon
Edith Swatzburg
Jacob Levi Venooker
Debra Wool



April Anniversaries

Brian and Robbin Alpert
Isaac and Rebecca Brody
Greg and Deborah Kupfer
Steve and Judy Mann
Emilia and Valery Osovsky
Gregg and Sarah Selke
Ira and Janine Sitko

April Yahrzeits

April 1

Evelyn Driessen
Pauline Frank
Larry Freeman
Henry Green
Harvey Krasney
Sadie Lazev
Benjamin Lazev
Sheldon Levine
Helen Mazza
Sally Miller
Jean Morea
Jerome Rosen
Zermina Senges
Florence Shafner
Allen Shedroff
Donald Shulman

Cvanio Tauer
Deeda Wharton

April 8

Elias Altman
Michael Bloom
Scott Bloom
Samuel Bloom
Zoe Holmwood Church
Frances Church
Shirley Feuerman
Robert Flax
Adolph Goldsmith
Louise Goldstein
Edward Gotleib
Charles Gregory
Elaine Jacobs
Samuel Liebowitz
Judd Nordyk
Francis Segal
Leah Swiedler
Freda Weinberg
Bennett Werner

April 15

Katherine Buckstein
Steven Colsen
Joseph Fernandez
Miriam Miaz Fridman
Dottie Glasgow
Paul Glasgow
Rebecca Goodman
Howard Greenhouse
Yetta Hartman
Frank Kelco

April Yahrzeits

Minnie Krumholtz
Samuel Kushner
Dorothy Jean Love
William "Bill" Mandelbaum
Joseph Mann
Ethel Perl
Alexander Pollak
Janice Reisner
Rose Schlesinger
Frieda Shapiro
Lillian Shapiro
Abraham Sisisky
Hope Stein
Bella Stricker
Rose Swiedler
Mary Temple
Gordon Turner

April 22

Helen Atkind
Alicia Bauer
Gertrude Pat Blinderman
Jay Breslow
Edith Brown Deitch
Sarah Diamond
Edward -Edgar
Abraham Allie Feldman
Minnie Flitt
Marsha Gurwitz
Helen Hans
Esau Mazur
Helen Michaelson
Beatrice Mittelman
Nathan Paulson
Nathaniel Proper

Ruth Rebenfeld
Pat Ruck
Marlene Simon
Dorothy Spiegel
Irving Ziegler

April 29

Dorothy Dolly Abrams
Craig Blumsack
Agnes Diamond
Helen Dzurinin
Joseph Epstein
Anthony Freeman
Arnold Kaplan
Joseph Kazin
Mira Kil
Max Kline
Reginold Krasney
Abraham Allie Lamchick
Betty K. Lavender
Murray Luftglass
Philip Luner
Arlene Margolis
Joseph C. Quaratella
Helen Rosenholtz
Morris Rosenthal
Mary Rubin
Frieda Reznick Saltzberg
Howard Segool
Stanley Sheikowitz
Samuel Sher



We are eternally thankful for the support of those below. . .

Building Fund

Michael and Linda Barnett
-- in loving memory of Julia Barnett on her yahrzeit

Cantor's Fund

Charles and Romana Primus
-- in memory of Harold Wolfe
Charlotte Freeman and Family
-- In loving memory of Larry Freeman on his yahrzeit
Henry M. Dunkerley Jr.
-- in loving memory of John Shiers on his yahrzeit

Endowment Fund

Bart A. Sayet and Lori Lindfors
-- in loving memory of Irwin Sayet on his yahrzeit
Lester Shapiro
-- in loving memory of Claudia Shapiro on her yahrzeit
-- in loving memory of Joseph Shapiro on his yahrzeit

Essential Services Fund

Bob and Elly Hoffman
-- congratulations to Steve and Gail Weber on the birth of their new granddaughter, Phoebe Jo Ritterband
-- in loving memory of Benjamin Angert on his yahrzeit
Bruce and Lori Goldstein
-- in loving memory of Sidney Shanbrom on his yahrzeit
-- in memory of Allison Glickman's father, Ivan Glickman
Caren and Bob Linden
-- in celebration with Joyce Zion's great-granddaughter, and Gail and Steve Weber's granddaughter, Phoebe Jo Ritterband
Caren and Bob Linden & Family
-- in loving memory of Benjamin Linden on his yahrzeit
Jennifer Beatty
-- in loving memory of my father, Irving Ressler on his yahrzeit
Karen Dinsfriend
-- in memory of George Mikulka on his yahrzeit
Lester Shapiro
-- in loving memory of Claudia Shapiro on her yahrzeit
Lois and Steve Panikoff
-- in honor of the birth of Steve and Gail Weber's grandchild, Phoebe Jo Ritterband
-- in memory of Elaine Knobel
Louise Feldman Baskey
-- in loving memory of Carl Isaacson on his yahrzeit
-- in loving memory of Eva Isaacson on her yahrzeit
Martin and Joanna Lazarus
-- in loving memory of Priscilla Young on her yahrzeit
-- in loving memory of Alex Lazarus on his yahrzeit
-- in memory of Jay Han's mother, Trudy Hans
-- mazel tov to Gail and Steve Weber on the birth of their granddaughter, Phoebe Jo, daughter of Dara & Jeff Ritterband

-- in loving memory of Josephine Hovey on her yahrzeit
Nicole Arruda
-- in loving memory of Gail Piotrkowski on her yahrzeit
Patricia and Jay Hans
-- in honor of the Phoebe Jo Ritterband's birth, granddaughter of Gail and Steve Weber
Stan and Karen Bloustine
-- in loving memory of Gerald Baker on his yahrzeit
The Kil Family
-- in loving memory of Melvin Zablotsky on his yahrzeit

Goldsmith Kallan Fund

Lori Corah
-- in loving memory of Terri Goldsmith
Stan and Karen Bloustine
-- in loving memory of Joseph Bloustine on his yahrzeit
Lester Shapiro
-- in loving memory of Claudia Shapiro on her yahrzeit

Isaaca Siegel Landscaping Fund

Golda Siegel Doyle
-- in loving memory of Isaaca Zelda Siegel on her yahrzeit
-- in loving memory of Harriette Siegel on her Yahrzeit

Meyer Goodman Fund

Henry and Jane Weinberg
-- in memory of Elaine Knobel

Mitzvah Fund

Abe and Sandy Fisher
-- in loving memory of Evelyn Driessen, Sandy Fisher's mother, on her yahrzeit
Don and Lois Steinman
-- mazel tov to Joyce Zion, Gail and Steve Weber, and Dara and Jeff Ritterband on the birth of their great grand daughter, granddaughter and daughter, Phoebe Jo
Flossie and Michael Betten
-- mazel tov to Gail and Steve Weber on the birth of their granddaughter, Phoebe Jo Ritterband
Judy and Stephen Mann
-- in memory of my sister, Eleanor Katz
-- in honor of Barbara Wolfe's special birthday
-- in memory of Jay Han's mother, Trudy Hans
-- mazel tov to Gail and Steve Weber on the birth of their granddaughter, Phoebe Jo Ritterband
-- in memory of Allison Glickman's father, Ivan Glickman
Rick and Myra Gipstein
-- in memory of Harold Wolfe

Rabbi Aaron Rosenberg Tikkun Olam Scholarship Fund

Lester Shapiro
-- in loving memory of Claudia Shapiro on her yahrzeit

CONTINUED ON PAGE 10

Please make checks payable to Temple Emanu-El and remit to PO Box 288, Waterford, CT 06385

We are eternally thankful for the support of those below. . . Continued from p 9

Matthew and Florence Lewiss
-- in loving memory of Rose Pearlman Tulman on her
yahrzeit

Rabbi's Discretionary Fund

Lester Shapiro
-- in loving memory of Claudia Shapiro on her yahrzeit

Susan Smith
--in loving memory of Bernard Simon on his yahrzeit
--in loving memory of Marlene Simon on her yahrzeit

Starry Night Seeking Auction Donations

After a three-year pandemic hiatus, Starry Night, Temple Emanu-el's biggest fundraiser, returns Saturday, June 11, 2022 at 6 pm at the Port 'N Starboard at Ocean Beach Park in New London. A significant component of the fundraising event will be an online silent auction. The committee is asking TE members to consider donating items or services of value such as the use of vacation homes and time shares, special dining experiences, golf outings, sports and entertainment tickets, pro lessons, and high end goods. Popular services in past auctions include dinner for 6, piano lessons, housekeeping service, oil delivery, handyman services. Gift card donations to your favorite restaurants are highly encouraged.

For service donations — not a physical item — please send a photo and/or a description with name of donor and value to Roberta at office@tewaterford.org. Small items such as jewelry, technology, or printed gift certificates can be dropped off at the office or picked up by request. Those who have large items to donate are asked to please send a photo, description with name of donor and value and someone will pick up the donation close to the event date. **Only new items will be accepted.**



The poster features a vibrant, multi-colored circular graphic at the top with the text "Starry Night Celebration" and "Join us as Temple Emanu-El turns 60+1+1". Below this, it says "SAVE THE DATE and get your GROOVE ON" in colorful letters. Further down, it provides the event details: "Saturday, June 11, 2022 at 6 pm" at "Port 'N Starboard Ocean Beach Park in New London". A list of activities includes an online auction, a large outdoor and indoor venue overlooking Long Island Sound, cocktails, heavy hors d'oeuvres and dessert, and dancing to the sounds of the 1960s. At the bottom, it directs readers to click a link or go to www.teastarrynightdinnerdance.com for more information.

Celebrating the 60th, 61st and 62nd anniversaries, the evening will feature a 60s theme and have a slightly different format than the dinner dances in the past. In addition to the auction, the night will include dancing to the sounds of the 1960s and guests will be treated to heavy hors d'oeuvres, dessert, and cocktails on the spacious outdoor deck overlooking the Long Island Sound as well as in the main ballroom.

The committee is also looking for photos to include in a slide show showcasing members and events through the years, most especially those from the 1960s. If you have some photos to share either scan and email them to **Amy Perry at** perryamy1@gmail.com or drop them off at the office. Be sure that all photos are clearly marked with your name and phone number on the back of photos and the envelope.

For more information about donating and attending what is sure

to be a totally groovy and important event go to <https://www.teastarrynightdinnerdance.com>. **To Purchase tickets** go to <https://www.teastarrynightdinnerdance.com/payment-form>. You can also find a Starry Night link on the TE website <https://tewaterford.org/>.

Thank you to Barbara Wolfe and Janine Sitko for organizing the Mishloach Manot Fundraiser.

Thank you to those who helped put together the Mishloach Manot Bags and to those that delivered the bags.

Robbin Alpert
Sean Bendick
Karen Bloustine
Michelle Caton
Jo-el Fernandez
Sue Fornara
Susan Goldstein
Adam Kaufman
Hali Keeler
Anne Kronisch
Deborah Linder
Jo Michaelson

Richard and Sheri Pascal
Amy Perry
Sheryl Reagan
Roberta Reisner-Winograd
Katherine Rosen
Karen Rosenberg
Armi Rowe
Bill Seeman
Barbara Senges
Janine Sitko
Shoshanah Weiss
Barbara Wolfe

Thank you to all the Mishloach Manot Donors:

Brian and Robbin Alpert
Michael and Linda Barnett
Sean and Anne Bendick
Michael and Florence Betten
Stanley and Karen Bloustine
Lynn and Jean Brown
Karen Dinsfriend
Golda Doyle and David Bloustine
Henry Dunkerley
Kenneth and Kimberley Fischburg
Marilyn and Stuart Fishbone
Sandy and Abe Fisher
Susan and Chris Fornara
Judith Glickstein
Andrew and Donna Goldman
Bruce and Lori Goldstein
Jose Michael Gonzalez
Violet and Gavier Greenmoor
Paul and Andrea Kanfer
Pamela Grills Nacaarato and Peter Nacaarato
Geoff, Susan, Matthew and David Hausmann
Barbara and Peter Kallan
Hali and Gerry Keeler
Greg and Deborah Kupfer
Jay Levin

Bob and Caren Linden
John Murphy and Barbara Senges
Michael and Marcia Reinhard
Chris and Jennifer Rock
Karen and Aaron Rosenberg
Jonathan and Armi Rowe
Bart Sayet and Lori Lyndfors
Lester Shapiro
Alvin and Pat Sher
Ira and Janine Sitko
Julie and Jay Snoke
Don and Lois Steinman
The Parads
Amy Perry and Bill Posage
Claire Warren
Gail and Steve Weber
Nathan and Shelley Weiss
Susan Weiss and Mark Newall
Frederic West
Laurie Wickson
Sam Winograd and Roberta Reisner-Winograd
Scott and Barbara Wolfe
Scott and Jennifer Zettler
Debra Ziegler

Thank you all for making this Purim Special for the entire congregation while raising funds for the Temple Emanu-El Essential Services Fund



WATERFORD, CT

Temple Emanu-El Seder 5782

Langley's at
Great Neck Country Club

28 Lamphere Road
Waterford, CT 06385

Friday, April 15, 2022 • 6:00 pm

Menu:

Matzo Ball Soup, Gefilte Fish, Chicken,
Potato, Tzimmes, Vegetable, Kosher Wine

Please bring a Kosher-for-Passover
dessert to share

RSVP for Passover Seder by April 5th

Please note that all guests must be vaccinated.

Name(s): _____

Phone: _____ E-mail: _____

Number attending: _____ at \$36 per Adult, _____ at \$20 per Child, ages 6–12,

_____ Age 5 & under free **Total Enclosed:** _____

Number of vegan or vegetarian meals: _____

Seating will be pre-arranged. Please include requests for guests at your table.

Return this form with payment to: Temple Emanu-El • PO Box 288 • Waterford, CT 06385

To pay by credit card call Temple office: 860-443-3005 • **Questions?** Call Gail Weber: 860-334-6015

BUILDING A VIBRANT COMMUNITY THROUGH REFORM JUDAISM

Support Temple Advertisers / \$18 per month / \$165 for 11 months / Call 860-443-3005



RE/MAX[®]
ON THE BAY



**FOR ALL YOUR
REAL ESTATE NEEDS**

Direct: 860-443-4400 Cell: 860-625-5255
Email: Geoff@CallTheHouseMan.com
Website: www.CallTheHouseMan.com
Blog: CTHouseMan.com

THE City NEVER SLEEPS!

MYWHALINGCITY.COM • OPEN 24/7
BROAD & COLMAN ST, NEW LONDON • 860.443.8361

MY WHALING City

860-443-CITY (2487)

PsychologyCT.com

Schaperow Psychology & Associates:
Thorough diagnostic assessments; psychological testing; individual, marital, & family therapy.

Drug & Alcohol Treatment:
Clinicians that specialize in drug & alcohol treatment.

And:
Cognitive Behavioral Therapy (CBT) Center:
Evidence-based CBT to improve mental health, and decrease stress for certain physical illnesses.
860-447-2047 / PsychologyCenterOffice@gmail.com

Conveniently Located Just Over the Waterford Town Line
at 960 Bank St., N.L. behind Sign "A" Rama

**NEW LONDON
SELF-STORAGE**

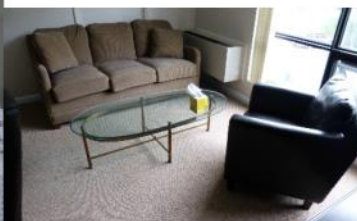
CLIMATE CONTROLLED

860-442-0008

www.NLSelfStorage.com

- Brand New, Clean Facility
- 24/7 Video Surveillance
- Secure Gate with Keypad Entry
- Month to Month Rentals
- Free "We'll Pick It Up" Service
- Locally Owned & Managed
- 200+ Units - 6 Sizes, up to 10'4" ht.
- Climate Controlled Automobile Bays
- Boxes, Locks, Packing Supplies

Psychology CT LLC is **seeking renters**, as we have **beautiful offices available** in Waterford. These offices are perfect for professionals (e.g., therapists, massage therapists, small practice attorneys & accountants, certain kinds of physicians, etc.), especially those that don't need a reception area, but may still benefit from a waiting area. Please see <https://sites.google.com/site/schaperowpsychology/office> for details, or email psychologycenteroffice@gmail.com for more information. PsychologyCT.com



TEMPLE EMANU-EL
PO BOX 288
WATERFORD, CT 06385

Please use PO BOX 288 WATERFORD, CT 06385
when mailing material to the temple

Non-Profit
Organization
U.S. Postage PAID
New London, CT
06320
Permit #480

Deadline for May 2022 Bulletin is Friday, April 15

Email your articles to Roberta at office@tewaterford.org

CHANGE SERVICE REQUESTED

Our Leadership

Rabbi / Marc Ekstrand / rabbi@tewaterford.org
Rabbi Emeritus / Aaron Rosenberg / arloveskr@aol.com
Cantorial Soloist / Sherry Barnes /
cantorialsoloist@tewaterford.org
President / Andy Parad / president@tewaterford.org
1st Vice President / Armi Rowe
VP of Building and Grounds / Russell Sheikowitz /
buildingsgrounds@tewaterford.org
VP of Religious Practices / Claire Warren
Treasurer / Thomas Smith / treasurer@tewaterford.org
Vice Treasurer / Bruce Goldstein
Recording Secretary / Marcia Reinhard
Corresponding Secretary / Deborah Linder
Immediate Past President / Jo-el Fernandez
pastpresident@tewaterford.org
3 Year Trustees: Michael Barnett, Michele Caton, Jonathan Rowe,
one unfilled
2 Year Trustees: Robbin Alpert, Susan Cramer, Amy Perry,
Shoshana Weiss
1 Year Trustees: John Murphy, Irene Brickman-Smith, Janine
Sitko, Scott Wolfe

Membership Co-Chairs /
Social Action Co-Chairs / Karen Bloustine & Sybil Nassau
Sisterhood / Gail Weber & Barbara Senges/
sisterhood@tewaterford.org
Gift Shop / Susan Hausmann / judaicashop@tewaterford.org
Brotherhood / brotherhood@tewaterford.org
Kitchen Committee Chair / Edee Smith
Religious School Committee Chair: Sarah Selke
Religious School Administrator / Rachel O'Brien /
religiousschool@tewaterford.org
Office Administrator / Roberta Reisner-Winograd /
office@tewaterford.org
Webmaster / Aaron Kaplan / webmaster2@tewaterford.org
Custodian / Don Kasper
Bulletin Editor / Mimi Perl

Location: 29 Dayton Road, Waterford, CT 06385

Mailing Address: PO Box 288, Waterford, CT 06385

Office: **860-443-3005**

Religious School: **860-443-3005**

Website: www.tewaterford.org