



## Rabbi's Message - Marc Ekstrand

Friends,

In the tiny little corner of the world that is the Temple Emanu-El community, things seem on the right track. Even though we are still navigating the pandemic, the Temple community is vibrant. Our Religious School just finished another successful year thanks to our Religious School Director, Rachel O'Brien, the dedicated staff of teachers, faculty assistants, an engaged Religious School Committee, eager students, and their families.

As this bulletin arrives in your snail mailbox, we'll be preparing to honor our educators during our first ever Share Shavuot program. We celebrated our 40<sup>th</sup> Howard Ilson Award recipient, Janine Sitko, a few weeks ago. We were able to host the largest community Passover Seder in many years at Langley's with over 100 participants. Thanks to Gail Weber and a host of women who brought everything together. From Selichot just before the High Holy Days until Shavuot, we've had a year of engaging programs and gatherings.

Outside our little corner of the world, things are very unsettled. The pandemic is surging once again. Political extremism has Washington paralyzed as rights and protections we thought were settled laws are under attack. Gun violence, overdoses, acts of racism, and antisemitism are on the rise. Acts of terrorism on both sides are increasing in Israel and the Occupied West Bank. War is raging in Ukraine, and as a result, the economy is faltering. I wish this were an exhaustive list, but sadly it's just a start. It is tempting to retreat

into our little bubbles and ignore the storms swirling outside. But, more than ever, we need to be engaged. It seems clear that the world will not right itself; it will need our help.

Being engaged can come in many different forms. It can mean simply staying on top of current events and being a witness to what is happening around us. It can mean sharing your personal history. Many of you fought the battles for civil rights, voting rights, women's health and rights, education, healthcare, etc. Your personal accounts can help younger generations understand and take on critical issues.

Engagement can also mean getting involved in advocacy. As I am writing to you, the Religious Action Center of Reform Judaism is just kicking off the Every Voice, Every Vote campaign.

Every Voice, Every Vote is a non-partisan effort because, as Reform Jews, we understand that democracy is the strongest, and our communities are the healthiest when our electorate reflects the breadth and diversity of our nation.

Our Jewish tradition informs us that the community must be consult-

ed when choosing leaders. We strengthen our democracy by encouraging conversation and engagement with issues and participation in elections. In the last election cycle, many of us took the time to participate in postcard campaigns to encourage people to vote in critical elections. We were effective. Will you join us this cycle? Can you join us again? Can you do a little more? Check out the Every Voice, Every Voice campaign at [www.rac.org](http://www.rac.org).

The bubble of our vibrant sacred community is beautiful. Let's let its light shine out to the rest of the world.

L'Shalom,

**Rabbi Marc**



## President's Message - Andy Parad

### **Great evening with BBYO**

How many minutes does it take to hard boil an egg? (According to Google at least). If you missed BBYO trivia night I can assure you there were several opinions for this based on several variables. Are we at sea level or in Denver, Colorado? How hard does it have to be boiled? Can the yolk still be a bit soft? Is it an ostrich egg? Would we even know the answer if we knew what all the variables are? I can tell you all this controversy was in good jest and good fun and BBYO was able to raise money for a good cause while the rest of us were able to tickle long-neglected brain cells. Thank you to BBYO for putting on such a fun event.

### **Still looking for a few good people**

As we look forward to our annual meeting on June 12, unless something changes in the next few weeks, there will be some open positions in the slate of offic-

ers. The nominating committee led by Armi Rowe looked far and wide to make sure that we have a Board that is diverse in its makeup and skills. Unfortunately (or possibly fortunately), there are still some open positions. I say fortunately because maybe you are reading this and saying to yourself: "I could be a Trustee." Or "I could be VP of buildings and grounds." Or "I could run the kitchen committee." If you are any of these people, please reach out to myself or Armi Rowe or the Temple office so we can talk to you about these positions. Or if you just want to be more involved but not necessarily in one of these positions, let us know too. We are always looking for more involvement and for someone to lend a helping hand. I'll see you all at the meeting or virtually on Zoom.

**Andy**

## Notes from Sherry Barnes

I feel like the world seems so out of balance these days. I listen to the news during the week and wonder how we arrived at this point. In Leviticus 19:18 it says: "You shall love your neighbor as yourself, and whatever you would not want to happen to you, do not do to another." I have to remind myself that even though it may seem crazy out there, there is a place in time where we can choose to leave it all outside the door. It's Shabbat, a day of rest. Not just physical rest, but a mind reset. Shabbat allows us to flip the switch.

For me, that happens when I step on the bima, the candles are lit and Shabbat begins. Rabbi Marc asks us to "breathe in Shabbat", as we let our breath out, we also let go of the chaos of the week and let it slip away. We welcome the calming rest of the Sabbath into our sanctuary, our holy spaces, and into our soul. Looking out to see your faces and hearing you sing, in-person or on Zoom, the energy in the room changes.

You help bring in that feeling of Shabbat for me. Being with my Temple Emanu-El family, engaging with the prayers, readings, music, your singing and smiling faces

give me a 24 hour reboot, which allows me to start the next week a little less stressed. May we all find that Shabbat peace and wholeness as we move from the holy, into the ordinary, and back into the holy again.

**They're back! The TE Band and TE Choir will be playing and singing for the Share Shavuot Service on Saturday, June 4, @ 6:00 p.m.** Thank you for being a part of this special service. We will be honoring our Educators and announcing our Aaron Rosenberg Tikkun Olam Scholarship recipients. There will also be a lovely oneg following the service. Please come and join us for this service.

Thank you to Jeff Elkin, who will be chanting Torah at our Shabbat Service on June 10.

A big Thank you to Armi, Sean, Ryan, and Ava, Nathaniel, Jonathan, and anyone who helped out our AV Team, for giving our congregants at home a chance to be a part of, and to be able to participate in Shabbat Services and programming. You've done a wonderful job and we appreciate all the time you have given to make this happen.

CONTINUED ON PAGE 3

## Notes from Sherry Barnes *continued from page 2*

### **Summer services will begin in July**

If you, or you and your family and friends, are interested in leading a service this summer, please contact me or Rabbi Marc. We are happy to help you put one together. I'll be here to help with music. I already have my Adult Intermediate Hebrew class signed up for one in August. You can chant Torah, give a sermon, or do both. All services begin at 7:00.

## **Sherry**

## **Sisterhood -- Gail Weber & Barbara Senges, Co-Presidents**

### **Hi Ladies,**

Our busy Sisterhood year has come to an official end. Except for our Walking group in Niantic, all our other activities will begin again in September.

We still had to maneuver around the on-going pandemic and frequently had to change gears at the last minute. But the Sisterhood ladies are flexible and creative, and this enabled us to continue our programs either in-person, on Zoom or a hybrid model. Throughout the year we played Trivia, had a Zoom only Scavenger Hunt, read and discussed numerous books with our book club members, supported Safe Futures on their walk, planted individual herb gardens, led a Shabbat service, and gathered for an end of the year dinner where we heard from our WRJ Regional Vice-President.

Our membership this year was just under 100 women! It has been wonderful seeing and hearing from many of you. We are always looking for ideas, so continue to reach out to us as we look ahead to next year.

Barbara Senges and I have worked closely together this past year as co-presidents. It has been a wonderful partnership as we know each other's strengths and weaknesses. Moving ahead, Barbara will be taking over as president. I am stepping down to allow myself more time with my expanding family. I have loved working with the women on the Sisterhood board. They are all high energy, enthusiastic and very willing to take on responsibilities. Thank you all for this opportunity! I know you are in great hands with Barbara leading the way.

### **Our proposed Slate of Officers for 2022-2023:**

<b>President:</b>	<b>Barbara Senges</b>
<b>Treasurer:</b>	<b>Caren Linden</b>
<b>Programs:</b>	<b>Merrill Mazzella</b>

<b>Corresponding Secretary:</b>	<b>Gail Schor</b>
<b>Recording Secretary:</b>	<b>Eileen Shapiro</b>
<b>Book Club:</b>	<b>Cecile Feldman</b>
<b>Judaica Shop:</b>	<b>Lisa DeVito Marcus</b>
<b>Publicity:</b>	<b>Sue Fornara</b>

A special thank you to Susan Hausmann for all her time and energy over the past 10 years with running our beautiful Judaica Shop. Everyone truly appreciates all you have done. We are happy to welcome Lisa DeVito Marcus onto the board as she takes over this role. Also thank you to Emily Lerner who did a great job as Corresponding Secretary. When she stepped down, we were happy to have Gail Schor take over that position.

Sisterhood women are a special breed of women. They know and speak their minds; they know how to make things happen and they are welcoming and inclusive. Again, it has been my pleasure to work closely with many of you.

See you during the summer!

**Barbara Senges & Gail Weber,**  
Co-Presidents Sisterhood

### **TEMPLE EMANU-EL GIFT SHOP**

As the old saying goes, all good things must come to an end. Well, this is my last bulletin article since my term expires on June 30.

I would like to thank our Temple community for the incredible support and memories I have received through the past decade. This experience has been beyond rewarding. There are too many to thank for all the help I have received so I am just going to say thank you to everyone.

CONTINUED ON PAGE 4

## **Sisterhood -- Gail Weber & Barbara Senges, Co-Presidents -- continued from p. 3**

I am excited to announce that Lisa Devito Marcus and Anne Cohn are taking over on July 1. I cannot wait to see what special touches they bring to the gift shop.

You can always make inquiries by email at [Judaicashop@tewaterford.com](mailto:Judaicashop@tewaterford.com).

Geoff and I are not going anywhere. You will still be able to see us around the Temple.

With Many Thanks,

**Susan Hausmann**



## **Temple Emanu-El Religious School (TERS) - Rachel O'Brien**

**Sunday May 22 was the last day of Temple Emanu-El Religious School classes for 5782.**

We celebrated our teachers, faculty assistants, and students. I am so grateful to all of them, for their energy, enthusiasm, and commitment all year long. I feel good about all that we accomplished together.

### **Last day tradition renewed**

After special presentations to our staff, we continued the tradition of recognizing perfect and excellent attendance among our students (as we know, successful learning and good attendance go hand in hand). We also started a new end of year tradition. After two years of accumulating tzedakah, we were able to give each class \$200 to donate to a cause of their choice.

The teachers spent time educating our students on the support services our community is so lucky to have and, in the end, each class voted on where they would donate their class portion. I am thrilled that Safe Futures, Camp Hope, Homeless Hospitality Center, Start Fresh, New London Meal Center and The World Union for Progressive Judaism Ukraine Crisis Fund will all be receiving a donation from TERS. We wrapped up our last day of school with a school picture and enjoyed a lovely barbecue picnic outside on the grass where staff, parents and children enjoyed socializing and saying their goodbyes till the Fall. It was a perfect way to cap off a great year.

### **Welcoming new students and being flexible**

Amidst a pandemic, many of the staff members, includ-



ing myself, were new to our roles this year, and we also welcomed 12 new students to our community! This past year required a strong willingness on everyone's part to jump into the unknown, to be

flexible, to learn to ask for help, to tap into resources around us, to live with the discomfort of not always knowing all the answers right away, and to simply trust our instincts on the spot.

This year, we introduced some new activities such as Sunday Family Funday and Share Shabbat, both of which were successful in bringing our community together. The students also enjoyed their Chanukah, Purim and Passover programming and celebrations. I would appreciate any constructive feedback you may have so please keep your eyes open for a school survey that will be coming your way.

### **Looking for your feedback**

I will be sharing the survey with the Religious School Committee so that we, as a team, can continue to work together to improve the school and to address the needs and concerns of our students and their families.

### **Special program June 4**

**Please mark your calendars for a very special evening on Saturday, June 4 at 6pm. Rabbi Marc and Hazzan**

CONTINUED ON PAGE 5

## Temple Emanu-El Religious School (TERS) - Rachel O'Brien, cont. from pg 4

Barnes will lead us in a special Shavuot service to honor TERS educators. Please join us to show your appreciation for all the hard work, time, and dedication our educators bring to our school. Working at TERS is a labor of love and nothing more. I hope we can all come out and show our staff how much we love and appreciate them.

Many thanks again for the consistent support of Rabbi Ekstrand and Sherry Barnes, the Religious School Committee, all our dedicated teachers, faculty assistants and substitute teachers and to those parents who volunteered their time and energy when called upon. We

hope you will all return in your roles next year.

### ***Get ready for the fall***

Religious School parents will soon receive their 2022/2023 school registration packets with their Temple membership packets. Please fill out that paperwork and submit it at your earliest convenience so we can plan for school staffing and resources accordingly.

Wishing you all a great summer!

***Rachel***

## **Events & Service Schedule**

June 1	Wed.	10:00 A.M.	Walk w/Sisterhood
June 2	Thur.	10:00 A.M.	Walk w/Sisterhood
June 3	Fri.	7:00 P.M.	Shabbat Service / Deadline to RSVP to attend Starry Night 60+1+1
June 4	Sat.	6:00 P.M.	Temple Emanu-El Share Shavuot Honor past and present religious school staff Rabbi Aaron Rosenberg Tikkum Olam Scholarship Award
	Sat.	7:30 P.M.	4 area Synagogues will celebrate Shavuot together at Temple Emanu-El or Zoom
June 5	Sun.	9:30 A.M.	Ahavath Achim invite us to Shavuot morning service including Yizkor at 84 Lebanon Ave. Colchester or Zoom
June 6	Mon.	6:30 P.M.	Baking Club will be making Mandalbrot
June 8	Wed.	10:00 A.M.	Walk w/Sisterhood
June 9	Thur.	10:00 A.M.	Walk w/Sisterhood
June 10	Fri.	7:00 P.M.	Shabbat Service
June 11	Sat.	6:00 P.M.	Starry Night 60+1+1 Port'NStarboard
June 12	Sun.	10:00 A.M.	RSVP ahead for Breakfast
		10:30 P.M.	Congregation Annual Meeting in person & Zoom
June 15	Wed.,	10:00 A.M.	Walk w/Sisterhood
June 16	Thur.	10:00 A.M.	Walk w/Sisterhood
June 17	Fri.	7:00 P.M.	Shabbat Service
June 22	Wed.,	10:00 A.M.	Walk w/Sisterhood
June 23	Thur.	10:00 A.M.	Walk w/Sisterhood
June 24	Fri.	7:00 P.M.	Shabbat Service at McCooks Beach Band Shell
June 29	Wed	10:00 A.M.	Walk w/Sisterhood
June 30	Thur.	10:00 A.M.	Walk w/Sisterhood



## Joint Shavuot Celebration -- Sat., June 4, 2022



### 6:00 PM Share Shavuot

- Come celebrate Temple Emanu-El staff past and present.
- Honor Rabbi Aaron Rosenberg Tikun Olam Scholarship Award Recipients:
  - **BAYLA MCCAFFREY, ETHAN NOVICK, and SIMONE LERNER.**
- Join in singing with the TE Choir and listening to the TE Band perform.
- Enjoy the Oneg.

**Then at 7:00 PM, the area synagogues,**

**Ahavath Achim (Colchester), Beth Jacob Synagogue**

**(Norwich), Temple Bnai Israel (Willimantic) will join us at Temple Emanu-El** to celebrate Shavuot commemorating the Revelation at Mount Sinai and the giving of Torah, with a night of study, punctuated with musical selections, some more food and a little prayer – a traditional and multi-dimensional extravaganza.

- There will be classes to choose from led by each of the Rabbis.
- **This event is Hybrid - both in person and on Zoom.**
- The official program ends about 10 PM, but then the unofficial program kicks in for those who wish to stay and keep learning until midnight.
- 

### Sunday Morning, June 5 at 9:30 AM

The same area synagogues invite us to join them at Ahavath Achim, 84 Lebanon Ave. Colchester or on zoom:

We'll sing with festive joy, chant the blossoming into the world of the Divine in the form of the Ten Commandments. Then during Yizkor we will remember those with whom we celebrated festivals in the past whose physical presence no longer enlivens them, but whose memory does.

## Social Action - Karen Bloustine & Sybil Nassau, Co-Chairs

There is a need for rides to medical appointments, grocery stores, etc.” Please call or email- Karen Bloustine- 860/326-6377, [Bloustinek@gmail.com](mailto:Bloustinek@gmail.com).

**Karen Bloustine and Sybil Nassau**

Social Action Committee Co Chairs

[bloustinek@gmail.com](mailto:bloustinek@gmail.com) / [sybil.nassau@yahoo.com](mailto:sybil.nassau@yahoo.com)



## June Birthdays

Francis Baskey  
Kaitlyn Bendick  
Andrew Blumer  
Matthew Daniels  
Hanna DeBruyn  
Hilary DuBois  
Nava Ekstrand  
Ilan Ekstrand  
Matthew Elkin  
Aliza Elkin  
Jeffrey P. Elkin  
Laurie Engelman  
David Feldman  
Emily Feldman  
Daimon Flax

Ben Flax  
Charlotte Frank  
Meika Freeman  
Judith Glickstein  
Alan Hollandersky  
Melissa Kallan  
Natalie Kil  
Ethel Krasney  
Tessa Lasser  
Joanna Lazarus  
Jared Clark Levin  
Jay B. Levin  
Roark Levine  
Lori Lindfors  
Devin Mazza

James Taylor Michalove  
Christopher Miller  
Mark Newall  
Kyla Orce  
Sherri Panikoff  
Noah Pascal  
Richard Pascal  
Marcia Reinhard  
Jonathan Rowe  
Ben Schaperow  
Carol Seeman  
Eileen Shapiro  
Deena Bess Snoko  
David Stein  
Dr. Kenneth Sunshine

Steve Weber  
Joseph Weiss  
Ophelia Jules Williams  
Daniel Wolfe  
Emma Zelken  
Scott Zettler



## June

### Anniversaries

Peter and Emma Zelken  
Lynn and Jean Brown  
Gary and Iris Freeman  
Richard and Myra Gipstein  
Paul and Andrea Kanfer  
Arthur Fox and  
Pamela Kilbey-Fox  
David and Keli Levine  
Robert and Caren Linden  
Gregory Morea and  
Barbara Luftglass-Morea  
Steven and Caryn Novick  
Daniel and Michelle  
Pievsky  
Judd Mayer and  
Dale Zechman Rosen  
William and Ellen Seeman  
Charles and Susan  
Seeman  
John Murphy and  
Barbara Senges  
Robert and Nancy Trostler  
Henry and Jane Weinberg



## June Yahrzeits

### June 3

Ellen Abrahms  
Milton Ballot  
Katherine Edgar  
Leon Elston  
Irene Fox  
Irving Gordon  
Michael Green  
John Greenhalgh  
Jacob Hartman  
Jack Kirsch  
David Kornstein  
David Levin  
Katerina Morozenko  
George Orenstein  
Margaret Ratner  
Ida Resnick  
Edgar Sevilla  
Hazel Shaw  
Alfred Sunshine  
Anita Thorp  
Warren Young

### June 10

George Bor  
Matthew Edgar  
Catherine Eichler Erfurt  
Joseph Farran  
Zachary Fradkin  
Jerry Freeman

Sadie Garfinkel  
Michael Glazer  
Stuart Glenn  
Sylvia Katz  
Jenny Kazin  
Samuel Kronick  
Irving Kronisch  
Shirley Lebowitz  
Ben Massman  
Harry Rollman  
Morris Sherman  
Jack Stern  
Edna Sunshine  
Sarah Ziegler

### June 17

Alexander Bochain  
Julius Cantor  
Ruben Elijah  
Helen Epstein  
Siebert Feldman  
Barney Goldstein  
Israel Kaminsky  
Evelyn Kaplan  
Boris Kil  
Charles Kilbey  
William Leader  
Scott Morganstern  
Aaron Nassau  
Abraham Seidman  
Arthur Seidman

Larry Spees  
Louis Weiss  
Abner West  
Bob Workman

### June 24

Benjamin Brody  
Sigmund Beck  
Joel Blumsack  
Rebecca Feldman  
Alvin "Sonny" Flitt  
Esther Irwin  
Lois M. Jackson  
Max Kallan  
Beatrice Kosseff  
Frieda Kupfer  
Marie Mange  
Roque Martinez  
Dana Stephen Nirenstein  
Aaron Parker  
Isadore Rosenstein  
Irving Ziegler



## ***We are eternally thankful for the support of those below. . .***

### **Cantor's Fund**

Henry Dunkerley

- in loving memory of Alice Werner on her yahrzeit

### **Essential Services Fund**

Ester Kisner

Caren and Bob Linden & family

- in loving memory of Irene Fox on her yahrzeit

- in honor of Janine Sitko receiving the Howard Ilson Award

Charles and Susan Scopelitis

- in memory of Michael S. Hillsberg

Gail and Steve Weber

- in honor of Janine Sitko being this year's recipient of the Howard Ilson Award

Susan Fornara

- in loving memory of H. Jerry Lavender on his yahrzeit

- in loving memory of Betty K. Lavender on her yahrzeit

### **Kitchen Fund**

Barbara Quaratella

- in loving memory of Joseph C. Quaratella

### **Mitzvah Fund**

Patricia and Jay Hans

- in grateful appreciation of Rabbi Marc Ekstrand during a difficult time

-in grateful appreciation of Sherry Barnes during a difficult time

The Keeler family

-in loving memory of Beverly Keeler on her yahrzeit

### **Prayer book Fund**

Michele and Harvey Snitkin

-in thanks to Sherry Barnes for her endless patience

### **Rabbi Aaron Rosenberg Tikkun Olam Scholarship Fund**

Henry and Jane Weinberg

-in loving memory of David Rifkin on his yahrzeit

### **Rabbi's Discretionary Fund**

Frances Shleffar

-mazel tov to Paula Garnica on the B'not Mitzvah of granddaughters Scarlett Maisie and Beatriz Sofia in London this June

Shirley Goldblatt

-in loving memory of Aaron Goldblatt on his yahrzeit

### **Ruth Joan Brody Religious School Fund**

Ellen and Steve Zane

-in loving memory of Martin Yavener on his yahrzeit

***Please make checks payable to Temple Emanu-El and remit to PO Box 288, Waterford, CT 06385***

## ***Brotherhood -- Rich McCaffrey & Nathaniel Rowe, Co-Presidents***

As your newly-minted co-Presidents of Brotherhood, Nathaniel Rowe and I are putting out an all-call to re-constitute the Temple Emanu-El (TE) Brotherhood! We are trying to rebuild the group email list (as the pandemic hiatus has, like everything else, set us back a bit) and this is our first (of many I'm imagining) attempts to build that membership list. As immediate past President Scott Zettler has said in the past "if you're a male member of TE, you're a member of the Brotherhood' (or something like that). Please let us know who

we missed and we'll reach out to add members or if you would like to be removed from the list, no worries. Our kickoff meeting will be early in September but wait...we are still planning things before then. Next on our agenda is a Brotherhood-sponsored Bagel & Coffee breakfast prior to the June 12 annual meeting. Please let Nathaniel or I know if you're interested in helping out with that. We're also looking to have a Brotherhood Gathering at the Rowe Farm in June. Look for another email coming soon.

## Mazal tov to . .



**The Spees family -  
Baby Olin Carl Howard Spees**  
born March 17 to  
**Erin and Jeff Spees**  
of Burlington, VT.

Olin is the grandson  
of **Leslie Spees**, Noank, CT.

Erin's parents are **Grace and Randy Fuller** of  
New York. Erin is a pediatrician and  
Jeff is a research scientist  
at University of Vermont.

## Condolences to . .

**Marilyn Fishbone  
and family**  
on the passing of  
**Stuart Fishbone**  
on Friday, May 20, 2022



# Join Temple Emanu-El's Baking Club



LET'S LEARN HOW TO BAKE  
MANDEL BREAD  
WITH ERICA MCCAFFREY & FRIENDS  
**MONDAY, JUNE 6 6:30PM**  
**TEMPLE EMANU-EL'S KITCHEN**  
CALL 860.460.3047  
TO RSVP &  
JOIN OUR BAKING COMMUNITY CHAT



**Starry Night  
Celebration**  
Temple Emanu-El  
turns  
**60+1+1**

**Join us as we toast  
Temple Emanu-El's  
60th, 61st, and 62nd anniversaries.**

**Saturday, June 11, 2022 ✧ 6 p.m.**

Port 'N Starboard Outdoor Deck and Ballroom  
Ocean Beach Park  
98 Neptune Avenue, New London

\$75 per person  
Miniskirts, go-go boots,  
and Nehru jackets optional.  
(Or maybe a sharkskin suit?)



**A NIGHT TO  
GET YOUR  
GROOVE  
ON!**

**cocktails ✧ heavy hors d'oeuvres ✧ to benefit the  
dancing ✧ dessert ✧ silent auction Temple Emanu-El  
Essential Services Fund**

This year's auction will be completely online.  
For more information and instructions for setting up your account for the online auction go to  
**[www.teastarrynightdinnerdance.com](http://www.teastarrynightdinnerdance.com)**



**RE/MAX<sup>®</sup>  
ON THE BAY**

**FOR ALL YOUR  
REAL ESTATE NEEDS**

Direct: 860-443-4400 Cell: 860-625-5255  
Email: [Geoff@CallTheHouseMan.com](mailto:Geoff@CallTheHouseMan.com)  
Website: [www.CallTheHouseman.com](http://www.CallTheHouseman.com)  
Blog: [CTHouseMan.com](http://CTHouseMan.com)

**THE City NEVER SLEEPS!**

MYWHALINGCITY.COM • OPEN 24/7  
BROAD & COLMAN ST, NEW LONDON • 860.443.8361

**MY WHALING City**

860-443-CITY (2487)

**PsychologyCT.com**

**Schaperow Psychology & Associates:**  
Thorough diagnostic assessments; psychological testing; individual, marital, & family therapy.

**Drug & Alcohol Treatment:**  
Clinicians that specialize in drug & alcohol treatment.

**And:**  
**Cognitive Behavioral Therapy (CBT) Center:**  
Evidence-based CBT to improve mental health, and decrease stress for certain physical illnesses.  
860-447-2047 / [PsychologyCenterOffice@gmail.com](mailto:PsychologyCenterOffice@gmail.com)

**NEW LONDON  
SELF-STORAGE**

**CLIMATE CONTROLLED**

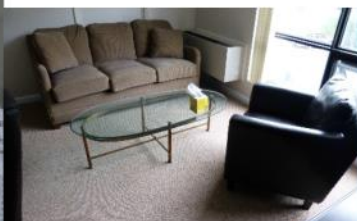
**860-442-0008**

[www.NLSelfStorage.com](http://www.NLSelfStorage.com)

*Conveniently Located Just Over  
the Waterford Town Line  
at 960 Bank St., N.L. behind Sign "A" Rama*

Brand New, Clean Facility  
24/7 Video Surveillance  
Secure Gate with Keypad Entry  
Month to Month Rentals  
Free "We'll Pick It Up" Service  
Locally Owned & Managed  
200+ Units - 6 Sizes, up to 10'4" ht.  
Climate Controlled Automobile Bays  
Boxes, Locks, Packing Supplies

Psychology CT LLC is **seeking renters**, as we have **beautiful offices available** in Waterford. These offices are perfect for professionals (e.g., therapists, massage therapists, small practice attorneys & accountants, certain kinds of physicians, etc.), especially those that don't need a reception area, but may still benefit from a waiting area. Please see <https://sites.google.com/site/schaperowpsychology/office> for details, or email [psychologycenteroffice@gmail.com](mailto:psychologycenteroffice@gmail.com) for more information. PsychologyCT.com



TEMPLE EMANU-EL  
PO BOX 288  
WATERFORD, CT 06385

Please use PO BOX 288 WATERFORD, CT 06385  
when mailing material to the temple

Non-Profit  
Organization  
U.S. Postage PAID  
New London, CT  
06320  
Permit #480

**Deadline for July-August 2022 Bulletin is Friday, June 10**

Email your articles to Roberta at [office@tewaterford.org](mailto:office@tewaterford.org)

CHANGE SERVICE REQUESTED

## Our Leadership

**Rabbi** / Marc Ekstrand / [rabbi@tewaterford.org](mailto:rabbi@tewaterford.org)  
**Rabbi Emeritus** / Aaron Rosenberg / [arloveskr@aol.com](mailto:arloveskr@aol.com)  
**Cantorial Soloist** / Sherry Barnes /  
[cantorialsoloist@tewaterford.org](mailto:cantorialsoloist@tewaterford.org)  
**President** / Andy Parad / [president@tewaterford.org](mailto:president@tewaterford.org)  
**1<sup>st</sup> Vice President** / Armi Rowe  
**VP of Building and Grounds** / Russell Sheikowitz /  
[buildingsgrounds@tewaterford.org](mailto:buildingsgrounds@tewaterford.org)  
**VP of Religious Practices** / Claire Warren  
**Treasurer** / Thomas Smith / [treasurer@tewaterford.org](mailto:treasurer@tewaterford.org)  
**Vice Treasurer** / Bruce Goldstein  
**Recording Secretary** / Marcia Reinhard  
**Corresponding Secretary** / Deborah Linder  
**Immediate Past President** / Jo-el Fernandez  
[pastpresident@tewaterford.org](mailto:pastpresident@tewaterford.org)  
**3 Year Trustees:** Michael Barnett, Michele Caton, Jonathan Rowe,  
one unfilled  
**2 Year Trustees:** Robbin Alpert, Susan Cramer, Amy Perry,  
Shoshana Weiss  
**1 Year Trustees:** John Murphy, Irene Brickman-Smith, Janine  
Sitko, Scott Wolfe

**Membership Co-Chairs** /  
**Social Action Co-Chairs** / Karen Bloustine & Sybil Nassau  
**Sisterhood** / Gail Weber & Barbara Senges/  
[sisterhood@tewaterford.org](mailto:sisterhood@tewaterford.org)  
**Gift Shop** / Susan Hausmann / [judaicashop@tewaterford.org](mailto:judaicashop@tewaterford.org)  
**Brotherhood** / Richard McCaffrey & Nathaniel Rowe /  
[brotherhood@tewaterford.org](mailto:brotherhood@tewaterford.org)  
**Kitchen Committee Chair** / Edee Smith  
**Religious School Committee Chair:** Sarah Selke  
**Religious School Administrator** / Rachel O'Brien /  
[religiousschool@tewaterford.org](mailto:religiousschool@tewaterford.org)  
**Office Administrator** / Roberta Reisner-Winograd /  
[office@tewaterford.org](mailto:office@tewaterford.org)  
**Webmaster** / Aaron Kaplan / [webmaster2@tewaterford.org](mailto:webmaster2@tewaterford.org)  
**Custodian** / Don Kasper  
**Bulletin Editor** / Mimi Perl  
**Temple Location:** 29 Dayton Road, Waterford, CT 06385  
**Temple Mailing Address:** PO Box 288, Waterford, CT 06385  
Office: 860-443-3005  
Religious School: 860-443-3005  
Website: [www.tewaterford.org](http://www.tewaterford.org)