



Rabbi's Message - Marc Ekstrand

Friends,

On October 15, Alvin Sher, a beloved member of our community, passed away. Many of you knew

Alvin. I met Alvin in 2016 on my first visit to Temple Emanu-El. Alvin is an extremely gifted artist as well as an extraordinary human being. I count myself exceptionally lucky to have crossed Alvin's path. I don't normally use this bulletin space to memorialize. However, this month I am making an exception only because Alvin is leading me to ideas much grander than either of us. I don't like talking about our dead in the past tense. With Alvin, I refuse completely. Alvin inspires me to stand in witness and participate in the grandeur of existence. A beautifully loving crowd gathered at the Temple on October 23 to remember and honor Alvin and support Pat and Sam. The words that follow are excerpted and edited from my eulogy for Alvin.

To visit Pat and Alvin's home is to be invited into artists' private space. All around are Pat and Alvin's art, not the pieces you'd find in a museum or on exhibit, but models and proofs, their creations in stages of development. On a few occasions Alvin gave me guided tours, some longer than others, pointing out certain aspects of certain pieces, sometimes just hinting to look at something from a particular vantage. Alvin and I share a passion for metals. I won't bore you trying to explain my fascination except to say that the enormity and gravity of the universe becomes vividly apparent in the processes of mining and separating, smelting, and melting, pouring, working, and finishing metals. Theologians and mystics spend lifetimes contemplating the sublime and practicing rituals in attempts to reach beyond themselves, feel universal gravity and enormity. The metallurgist, welder, forger, steelworker, the sculptor, looks indirectly into the heat for just a fraction of a second, the flow of its latent strength, in a

glimpse viewing the power of the universe, pours it out, chiseling, welding, finishing, and holding in finite space and time a state of awe that settles in the soul.

When I visited Pat this past week with my kids, Pat pulled some of Alvin's pieces off the shelf for them to see them better. But I'm a kid and I like to investigate new-old stuff too. I don't know the name of the piece Pat pulled down, but it always catches my imagination. The sculpture is like a little Temple with steps leading up to a sacred space, columns arranged around its circular perimeter. In the middle of the Temple is not a hand, one of Alvin's signature symbols, but a passageway, with steps leading down through the floor of the Temple. It's that little passageway in the floor that captivates my imaginative soul, draws it in like a magnet. I stuck my fingers down into that little passageway, just to feel, not the bronze steps or the walls of the passageway, but to see if I could feel mystery. My being senses that the little passageway and couple of steps down leads to a universe unknown and unknowable to any but those willing and ready to experience. I wanted to just slip my fingertips, the only part of me that could fit, inside that mysterious space.

I think, whether we are artists, or mystics, touching the unknown is what we live to do. We construct our sacred spaces and then dig in the floors, punch holes in the roofs, breaking the windows, expanding our real, lived experiences by engaging our imagination, exercising our soulful strengths. Awe is feeling a world much more expansive than can be perceived with simple senses. I was never in awe of Alvin. What makes Alvin special to me is that he points me in the direction of awe. That I was not in awe of him is not to say that he wasn't a beautiful and brilliant man. Even in these last years, he certainly was, even if just in reflection at times of his younger self. To me his genius is in creating my gateways of awe. To me, his art isn't so much in static pieces but in evoked active imagination.

Continued on page 2

Rabbi's Message - Rabbi Marc (continued from page 1)

In my reality was, and now in my memory and imagination is, his warm velvet voice inviting me to put my whole being into that narrow passageway in the floor.

I know nothing of death, only the somethings and someones death leaves behind. Faith demands me to hope death is something of that passageway in the floor, unknowable from this side, yet awe infusing, nonetheless.

B'Shalom, **Rabbi Marc**

President's Message - Andy Parad

What a whirlwind the holidays have been this year. It seemed like most people were either in person, on Zoom, or on Youtube. But if you missed it, Rabbi Mark and Hazan Sherry (along with the choir, some guest shofarists (if that's a word), a gifted teenage musician on the cello, several Torah readers, and a Hagbah for the ages (I'm not sure how Emma Zelkin did that with the Torah maximally unbalanced, it was just awe-some)) created meaningful and memorable High Holy Day services.

Andy Feinstein and Liz Bochain started a new and more environmentally friendly tradition of casting our sins with rocks instead of bread. Greg Morea led a break the fast that I don't really know how he pulled off. It was delicious, and probably equally importantly, it was efficient. I told my kids they had to wait for all the hungry adults to eat before they could get in line. I only got in about 5 minutes of chatting before they were yelling at me to get in line in front of them because the line was almost cleared out – and they wanted to eat.

Another new tradition was created at Sukkot. Typically Mark and Sherry do a mini-service with the kids outside near the Sukkah. And because it's the end of the religious school day and outside, there is a lot of energy let's just say. This year, someone had the clever idea to

do sort of a trail mix make your own snack that the kids could sit and eat during the teaching and service. I'm not sure I've ever seen 40 kids sit so attentively in any situation, let alone outside on a nice day. And thanks to everyone who helped with the Sukkah (and helped me not fall off the rickety ladder), it looks great this year.

I was also able to take the family to Temple Bnai Israel in Willimantic for Simchah Torah. What a great event. Rav Jeremy said it was his biggest holiday in 20 years. It was a great turnout and amazing to be there for the local liberal Rabbis taking the best of what they have learned and sharing it with us. The kids couldn't believe they got to help hold up the Torah and see it completely open in a giant circle. Just a great event that hopefully we will continue to share with these congregations in future years as well.

As you can see, I'm running over my word count this month. But it's not really my fault. And there is tons going on with Sisterhood. And there are plenty of bagels (starting at 9:00 in case kids want to get a bagel before religious school). We're off to a great start in 5783. Come join us!

Andy

Notes from Sherry Barnes



singing the melodies in the sanctuary again, after sing-

Wow and Whew! Wow: The High Holidays went well, and it was so nice to see so many people in the sanctuary. It felt like a family reunion again. There is definitely a different energy in the room when we have a full house, and it was spiritually uplifting. Your voices

ing in an empty sanctuary for 2 years of Zoom-only services, brought back that feeling of being IN community. Thank you to all of you that joined us on Zoom and YouTube Live. I loved watching all your Zoom faces popping up on the big screen. Thank you for helping to make my Holy Days meaningful and complete.

Though I thanked everyone behind the scenes in last

CONTINUED ON PAGE 3

Notes from Sherry Barnes (continued from page 2)

month's bulletin, I have to say thank you one more time. Though Rabbi Marc and I work hard on the service, we count on your help to make sure everything moves smoothly. From the liturgy and music, to flowers, sound, and AV Zooming, helping with programming, preparing the Rosh Hashanah oneg, picking honors, and those who accepted the honors, memorial book editing, organizing from the office, shofar blowing, greeters at the door, help parking cars, and finally to our Break-the-Fast, without your volunteering to help, it wouldn't be the same. Thank you to Rabbi Marc who brings his vision of how to create sacred moments throughout the Holy Days. It is always a pleasure to hear your ideas and work with you to make them happen.

Whew: This year felt like a Holiday marathon, and we are finally through all of them. The amazing energy in the room at Temple Bnai Israel for Simchat Torah was a great way to end the Holy Days. I was pleased with the turn out from Emanu-El and couldn't be prouder of those who stepped up to read a piece of Torah. I was especially proud of our students who stepped up to read from Genesis! It was a lovely evening, which led into our more meditative morning service which included Yizkor. It was comforting to see my grandfather's plaque on the board in memory of his yahrzeit that week. He was a shamash at his synagogue and though he passed before I could meet him, I often feel that my love of Judaism and my position here came from him.

So, from Wow, to Whew, to our cycle beginning again, I want to remind you that classes will be beginning again this month. **Classes run from November to the end of May 2023, except for the Torah Trope Class which will run for about 6 weeks.**

TUESDAYS FROM 12:00 TO 1:00 TRANSLATING TORAH.

Must be able to read Hebrew and have a knowledge of Hebrew vocabulary and grammar. **Begins Nov. 8.**

WEDNESDAYS FROM 11:00 TO 12:00 INTERMEDIATE HEBREW

Must be able to read Hebrew. We will be working on prayer reading and working towards reading from the Torah. **Begins Nov. 9.**

WEDNESDAYS FROM 12:00 TO 1:00 LEARNING TO CHANT TORAH

Must be able to read Hebrew. **Begins Nov. 9**

THURSDAYS FROM 12:00 TO 1:00 TRANSLATING PRAYERBOOK HEBREW

Must be able to read Hebrew and have some knowledge of Hebrew vocabulary and grammar. **Begins Nov. 10**

*Wishing all of you a warm, grateful,
and loving Thanksgiving.*

B'shir,

Sherry

Social Action - Karen Bloustine & Sybil Nassau, Co-Chairs

The Social Action Committee met recently. We are continuing the practice of making end of the year donations from the Mitzvah Fund.

Gift cards from Shop Rite and NSA Supermarket in New London and Walmart in Waterford will be purchased. The gift cards will then be distributed to JFEC and Temple Emanu-EL to use for families in need.

A suggestion was made to check with Fiddleheads Market to see if they have gift cards. I will be calling them.

The subject of doing something like "Adopt A Family" for Hanukkah was discussed.

We decided to postpone that decision until we checked with the Religious School.

We also will be making monetary donations to the Community Meal Center and Homeless Hospitality Center. We donated earlier this year to Planned Parenthood.

Only one request for rides to High Holiday services was received. This service is available at any time for services or medical appointments or shopping trips.

The committee decided to wait for Spring to schedule a Mitzvah Day. Activities for that day will be coordinated with the Temple Board.

Our next meeting will be December 4. If you are interested in joining our committee please email Karen Bloustine - bloustinek@gmail.com to receive a copy of the agenda.

Temple Emanu-El Raffle -- Time to Buy Your Tickets

This year's temple raffle will be drawn
Sunday, December 18 at 6 pm during the Brotherhood Latke Dinner.

There will be **seven prizes and 720 tickets** – still only **\$25 each**.

Sponsor --
Anonymous



First Prize:
FIVE \$500 VISA Gift Cards



Sponsor --
Sayet and Seder

Second Prize:
iPad Pro

Sponsor --
Creative Office
Furniture



Third Prize:
ONE \$500 VISA Gift Card



Sponsor --
Bill & Ellen
Seeman

Fourth Prize:
\$300 Walmart Gift Card

Sponsor --
Adam Kaufman
& Rebecca
Woodward



Fifth Prize:
\$200 Target Gift Card



Sponsor --
John Murphy &
Barbara Senges

Sixth Prize:
\$150 Home Depot Gift Card

If you have questions reach out to the
temple office:
office@tewaterford.org / 860-443-3305 or
John Murphy jem1219@atlanticbb.net or
860-608-0774.

John Murphy
Chairman Temple Emanu-El Raffle



Sponsor --
Jonathan &
Armi Rowe

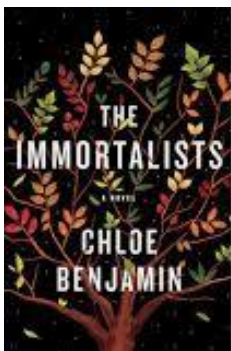
Seventh Prize:
\$100 Amazon Gift Card

Sisterhood -- Barbara Senges, President

Hi Ladies,

September was busy and October has been even busier. As I'm composing this article, we are getting ready for the Mahjongg Tournament on Thursday, the Safe Futures Walk this Sunday and our Membership Kick-Off Dinner Event is next Wednesday the 26. We are super excited that there will be 50 women attending – our most well-attended event in many years. I'll tell you all about it in my December article.

On October 11, we had our first Book Club event at the home of Cecile Feldman. Cecile had prepared an extremely informative PowerPoint presentation on the book and the author, and the discussion was a lively one. Armi Rowe was our Zoom master for the evening, and we had our largest book club attendance in Sisterhood history – 8 women in person and 10 women on Zoom! We ended our evening with delicious refreshments provided by our hostess.



Our next Book Club will be held on Tuesday, December 13 at 7:00PM at the synagogue and on Zoom. We will be joined by the women of Hadassah. In my October article, I reported that we would be reading “The Deadly Scrolls” by Ellen Frankel. We will NOT be reading this book as we have discovered that it is not available at local libraries. Instead, we have chosen “The Immortalists” by Chloe Benjamin - Jewish Book Club pick of 2018 and a New York Times bestseller. The book begins in 1969 when the four adolescent Gold children sneak out to visit a psychic who claims to be able to tell anyone the day they will die. The prophecies inform their next five decades. **The Immortalists** asks a seemingly simple yet unimaginably complex question: If you knew the date of your death, how would you live your life? This book is available at local libraries.



We have a very exciting event planned for **Thursday, November 17 at 7:00PM** at Temple Emanu-El and on Zoom. Our Sisterhood Social Action Committee led by Moira Ross (who brought you the “Get Out the Vote Event” in September) has organized a Panel Discussion on **Abortion and Women’s Reproductive Rights** for that evening. Our speakers will be **Rabbi Marc Ekstrand, Dr. Adrienne Parad and Marcie Brensilver**. Rabbi Marc will speak about the Reform Jewish viewpoint on abortion. Dr. Parad, MD FAAFP, will present an overview of abortion terminology and medical options and discuss real-life implications of the new restrictive abortion laws. Marcie Brensilver, nurse health educator and Planned Parenthood educator, will talk about how restrictive abortion laws in other states are affecting CT, will share personal stories about abortion before Roe v. Wade and will tell us what we can do to support women’s reproductive rights. This event is open to all members of Temple Emanu-El and should not be missed!

Our **Membership Drive** is ongoing. We presently have 87 members but we are still hoping that many more of you will join us. You can send your check for **\$36 to Caren Linden, 82 Quarry Dock Road, Niantic 06357** or drop it off at the Temple or bring it to an upcoming event.

Not receiving Sisterhood emails? Check your spam folder and add my email (professeur38@me.com) to your address book.

CONTINUED ON PAGE 6

Sisterhood -- Barbara Senges, President -- continued from p. 5

Save these December dates - On Sunday, December 4, buy your Chanukah presents at the Gift Shop's Chanukah Fair and come to the synagogue on Monday, December 12 at 10:00 AM to help us assemble and deliver the Chanukah bags for the Friendly Visitor Program.

Happy Thanksgiving!

Barbara Senges

Sisterhood President

TEMPLE EMANU-EL GIFT SHOP

The gift shop is gearing up for the Chanukah Fair, which will be held in the social hall on Sunday, December 4 from 10-1. All are welcome, and there are gifts for every age and every budget! Ann and Lisa just ordered

both fun and thoughtful items for the upcoming holiday as well as everyday items, like Shabbat candles. Be sure to stop by our fair and check out the selection of items on display.



In addition, the shop is open most Sundays from 10-12. You may also call Lisa at 860-908-2113 to make an appointment outside of these hours. Remember – you can buy it from us for less, and you do not have to pay sales tax. Every purchase supports your community. We look forward to seeing you at the fair!!

Learning Opportunities with Rabbi Marc

Exploring Judaism

Are you wondering if Judaism is for you? Are you in a relationship with a Jewish person? Have you been part of our community for years and want to know more about Judaism? Maybe you're already thinking about conversion. No matter what the reason for your interest is, join Rabbi Marc to explore Judaism. On Tuesday evenings in November, Rabbi Marc will host gatherings in the library at Temple Emanu-El from 7 to 8:30 PM. Rabbi Marc will present the big ideas from Jewish history, thought, religious practices, and peoplehood. There will be plenty of time for questions and discussion. Your curiosity will guide our conversations.



Reading Jewishly

In his Erev Rosh Hashanah sermon, Rabbi Marc referenced **Arthur Green's Radical Judaism**. If you are interested in reading this book and engaging in conversation, contact Rabbi Marc at marcekstrand@gmail.com. We will find days and times convenient to most for group discussions as we read and reflect upon this modern, forward, and outward looking theological work.

Temple Emanu-El Religious School (TERS) - Rachel O'Brien

It is amazing how fast October flew by! This past month has been very busy at TERS as our families celebrated the High Holidays, Sukkot and Simchat Torah and our teachers worked hard leading discussions about the history, customs, and meaning behind each holiday.

In previous years TERS celebrated Sukkot with a "picnic in the sukkah". This year we tried something a little different. Since Sukkot takes place during the time of the harvest, students made their own fall trail mix with dried fruit, seeds, granola and, of course chocolate chips, which made it a real hit with the kids. The

students hung handmade decorations in the sukkah and they each had a go at shaking the lulav after a demonstration by Rabbi Marc. **Thank you to Omer and Uma, our Shinshinim, who spent time leading a discussion on how Sukkot is celebrated in Israel.**

We also held our first Share Shabbat of the school year. It was very well attended, and it was fabulous to see many of our families come out and join us in-person and virtually. Following the service, thanks to

Continued on page 7

TERS)- Rachel O'Brien, continued from page 6

Adrienne Parad, the students and their families enjoyed a special Halloween themed oneg. A big **THANK YOU** to Amy Orce, Kyla Orce and the Parad family for their hard work making it happen and to Chana Backus, Amy Greenberg, Emma Zelkin, Lisa Marcus who generously donated the cookies, baked goods, and challah.

Other exciting news: Our new Religious School Committee had its first meeting, and we have an amazing committee this year! A HUGE thanks to Violet Greenmore, Elizabeth Hall, Amy Orce, Emma Zelkin, Rebecca Brody, Rachel Sherman, Bryne Blumer, Michelle Pievsky, Elyse Hicks, Liora Zeevie, Cindy Weiner, and Adrienne Parad for volunteering your time. It is already obvious that TERS will have great support in making this year better than last.

What to look forward to...



Please mark your calendar and tune into our next **First Friday Family Shabbat** on **November 4** at **6:30** as we celebrate the **Consecration** of our new **Kitah Gan/Alef** students. This year Rabbi Marc will be calling to the bima **Zoe Weiner, Orion Zelken, Beau Backus, Margot Feldon, and Oliver Constantine**, a **Kitah Hay** student who joined TERS in the fall, to be formally welcomed into their religious school education. I hope all our families can be there to help celebrate this special occasion.

Please note there will be **no religious school** on **November 23** and **November 27** as students and family break for the Thanksgiving holiday. **School will be back in session** on **November 30**.

Please note there will be **no religious school** on **November 23** and **November 27** as students and family break for the Thanksgiving holiday. **School will be back in session** on **November 30**.

L'hitraot, **Rachel O'Brien**



November Birthdays

Mark Anchors
Michael Betten
Irene Brickman Smith
Donny Brody
Jacquelyn H. Cedio
Marianne DeBruyn
Michael Ekstrand
Bruce Engelman
Dan Feldman
Margot Feldon
Marilyn Fishbone

Ryan Fornara
Andrea Goldstein
Jose-Michael Gonzalez
Tammy Kaye
Suzy Lamson
Jean Lasser
Pearl Lasser
Evelyn Luner
Judy Mann
Richard McCaffrey
Harvey Orenstein
Zoe Parad
Erica Picheny
Sheryl Reagan
Susan Rosen

Harvey Schiller
Gail Schor
Elwin Garth Schwartz
Daniel Noah Sheikowitz
Russell Sheikowitz
April Smith
Daria Jean Snoke
Henry Trehub
Dara Beth Weber
Amanda Williams
Sebastian Zelken



November Anniversaries

Jon and Nicole Arruda
Kenneth and Kimberly
Fischburg
Sam Winograd and Roberta
Reisner-Winograd
Jonathan and Armi Rowe
Harvey and Ellen Schiller
Barry and Stephanie
Thorp



Yahrzeits

November 4
Barbara Basch
Eze Bashi
Bessie Bauman
Judy Dancer
Jeanette Reinhard
Bobby Kandel Rosen

Mira Shotten
Flora Surnamer
Norman Sutel
Jeremy Waggiber
Esther Webman
Shirley Yavener
Janet Zeldis

November 11
Meyer Abraham
Coleman Andelman
Helen Angert
Dr. John P. Ekstrand
Roy Garson
Lawrence Gottfried
Caroline Hillsberg
Leon Kropp
Jack Kupfer
Judith Levin
Sarah Liebowitz
Phyllis Morea
Helen Schreiber-Gilman
Louis Vinick
Gail Webman
Lennard Wharton
Irving Zion
Hinda Freeman Zisholtz

November Yahrzeits

November 18
Rosalyn Braverman
Gerald Charles
Charles Cramer
Dr. Morris Eisenstein
Stanley Friedman
Edwin Gordon
Fanny Gordon
Mike Greenberg
John Hoffman
Sylvia Irwin
Lottie Lazarus
Helen Michalove
Leo Rosenberg
Ethel Rosenstein
Dora Schaferman
Gary David Scharfman
Thayer Schlegel
Laura Seder
Yetta Seeman
Philip Shafner
Marion Trehub
Selma Lieberman
Zechman

November 25
Warren Brenner
Beatrice Caplowe
Barry Gilman

Bernard Glasgow
Dorothy Glazer
Joseph Sol Gold
Inez Goldsmith
Vivian Goldsmith
Elsie Greenhouse
Anne Gregory
Patricia Grills
Herman Gruber
Betty Kallan
Paula Kaminsky
Stephen Kellert
Beverly Gilman
McCaffrey
Charles Misch
Pearl Rogovin
Ida Rosenshein
Steven Schwartz
Mary Shiers
Albert Warren
Edith Weiner
Samuel Zelvin



We are eternally thankful for the support of those below

Building Support Fund

Marlene Frydel

Bart A. Sayet and Lori Lindfors

-- in loving memory of Alexander Rosen on his
yahrzeit

Essential Services Fund

Bigi Ebbin

Malcom and Betsy

Michael Glickman

Caren and Bob Linden

-- in loving memory of Betty Jean Linden on her
yahrzeit

Gary Baker

-- in honor of my mother Helaine Baker

Karen Dinsfriend

-- in loving memory of Joel Dinsfriend on his yahrzeit

Sherry Zelvin

-- in loving memory of Eleanor Torrest on her yahrzeit

Goldsmith-Kallan Fund

Marvin and Jane Schnur

-- in loving memory of Rosella Rappoport on her
yahrzeit

Isaaca Siegel Landscaping Fund

Barry and Cecile Feldman

-- in memory of Alvin Sher

Kitchen Fund

Temple Emanu-El Sisterhood

Mitzvah Fund

Brianna Agnew Weber

Melanie Furjanic

Esther and Saul Spigel

---in loving memory of Sarah Resnick on her yahrzeit

Hali and Gerry Keeler

---in loving memory of J. Julius Schnable on his
yahrzeit

---in honor of Philip's selection as NFA Teacher of
the year

---mazel tov to Roberta Reisner-Winograd and Sam
Winograd on the birth of their grandson, William
Charles Winograd

Rabbi's Discretionary Fund

Bruce Engelman

---in appreciation of Rabbi Ekstrand leadership during
the High Holidays

Judi Glickstein

---thank you Rabbi Marc Ekstrand for the memorable
High Holiday services

Leonard and Helen Goldstein

---in loving memory of John Scheiber on his yahrzeit

Michelle Blinderman-Davis

---in loving memory of Maurice Blinderman on his
yahrzeit

Shirley Goldblatt

---in loving memory of Ann Goldblatt Krysta on her
yahrzeit

Please make checks payable to Temple Emanu-El and remit to PO Box 288, Waterford, CT 06385

Condolences to . . .

Patricia and Sam Sher

on the passing of Pat's husband and

Sam's father,

Alvin Sher



November Events & Service Schedule

Tues.	Nov. 1	7:00 P.M.	Explore Judaism w/Rabbi Ekstrand
Wed.	Nov. 2	4:30 P.M.	Religious School
Fri.	Nov. 4	6:00 P.M.	Share Shabbat and Consecration
Sun.	Nov. 6	9:00 A.M.	Sunday Morning Café provided by Brotherhood
		9:30 A.M.	Religious School
		10:30 A.M.	Preschool
		11:00 A.M.	Rain Date for Tag Sale
Tues.	Nov. 8	12:00 P.M.	Translating Torah Class begins
		7:00 P.M.	Explore Judaism w/Rabbi Ekstrand
Wed.	Nov. 9	11:00 A.M.	Intermediate Hebrew Class begins
		12:00 P.M.	Learning to Chant Torah Class begins
		4:30 P.M.	Religious School
Thur.	Nov. 10	12:00 P.M.	Translating Prayerbook Hebrew begins
Fri.	Nov. 11	7:30 P.M.	Kabbalat Shabbat – honoring veterans
Sun.	Nov. 13	9:00 A.M.	Sunday Morning Café provided by Brotherhood
		9:30 A.M.	Religious School
Tues.	Nov. 15	12:00 P.M.	Translating Torah Class
		7:00 P.M.	Explore Judaism w/Rabbi Ekstrand
Wed.	Nov. 16	11:00 A.M.	Intermediate Hebrew Class
		12:00 P.M.	Learning to Chant Torah Class
		4:30 P.M.	Religious School
Thur.	Nov. 17	12:00 P.M.	Translating Prayerbook Hebrew
		7:00 P.M.	Panel Discussion on Abortion and Women’s Reproductive Rights
Fri.	Nov. 18	7:30 P.M.	Kabbalat Shabbat
Sun.	Nov. 20	9:00 A.M.	Sunday Morning Café provided by Brotherhood
		9:30 A.M.	Religious School
		10:30 A.M.	Preschool
Tues.	Nov. 22	12:00 P.M.	Translating Torah Class
		7:00 P.M.	Explore Judaism w/Rabbi Ekstrand
Wed.	Nov. 23	11:00 A.M.	Intermediate Hebrew Class
		12:00 P.M.	Learning to Chant Torah Class
Fri.	Nov. 25	7:30 P.M.	Kabbalat Shabbat
Tues.	Nov. 29	12:00 P.M.	Translating Torah Class
		7:00 P.M.	Explore Judaism w/Rabbi Ekstrand
Wed.	Nov. 30	11:00 A.M.	Intermediate Hebrew Class
		12:00 P.M.	Learning to Chant Torah Class
		4:30 P.M.	Religious School
Thur.	Dec. 1	12:00 P.M.	Translating Prayerbook Hebrew
		7:00 P.M.	Panel Discussion on Abortion and Women’s Reproductive Rights
Fri.	Dec. 2	7:30 P.M.	Kabbalat Shabbat
Sun.	Dec. 4	9:00 A.M.	Sunday Morning Café provided by Brotherhood
		9:30 A.M.	Religious School
		10:00 A.M.	Judaica Shop Chanukah Fair
		10:30 A.M.	Preschool
		TBA	Social Action Committee Meeting
Sun.	Dec. 18	6:00 P.M.	Raffle Drawing



Call for Acts
**CABARET
NIGHT 2023**
Temple Emanu-El
SAVE THE DATE!
Saturday, February 4, 2023 at 6:30 pm
Appetizers, Havdalah, Variety Show & Dessert
29 Dayton Road, Waterford
Contact: shirie3860@aol.com or armirowe@gmail.com

DO YOU WANT TO LEARN
TO BAKE JEWISH TREATS?
OR SHARE RECIPES AND MEET
OTHERS WHO ALSO ENJOY BAKING?

JOIN
TEMPLE EMANU-EL'S
BAKING CLUB



Monthly baking sessions
in Temple Emanu-El's
kitchen. Watch to learn,
lead a baking session
or join our chat
and share recipes.

Call 860.608.4835 or email
rmccaffrey@snet.net
for more info



**JOIN US WEEKLY
IN THE SOCIAL HALL**

Sunday Morning Cafe

9:00 AM - 12:00 PM

**Catch up with friends or your e-mail,
meet with a committee, read the newspaper,
or meet some new people
over bagels and coffee.**



**COMPLIMENTS OF
TEMPLE EMANU-EL BROTHERHOOD**



**FOR ALL YOUR
REAL ESTATE NEEDS**

Direct: 860-443-4400 Cell: 860-625-5255
Email: Geoff@CallTheHouseMan.com
Website: www.CallTheHouseman.com
Blog: CTHouseMan.com



More than fast. More than signs.™

Cam McCormack
Visual Communications Specialist
Whaling City Graphics LLC

860-437-7446
cam.586@fastsigns.com
waterford@fastsigns.com
www.fastsigns.com/586

217 Boston Post Road
Waterford, CT 06385

PsychologyCT.com

Schaperow Psychology & Associates:
Thorough diagnostic assessments: psychological testing; individual, group, marital, & family therapy

Drug & Alcohol Treatment:
Clinicians that specialize in drug & alcohol treatment.

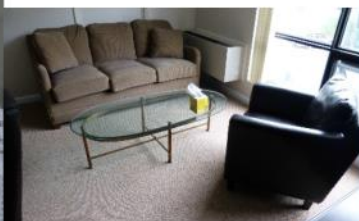
And:
Cognitive Behavioral Therapy (CBT) Center:
Evidence-based CBT to improve mental health, and decrease stress for certain physical illnesses.
860-447-2047 / PsychologyCenterOffice@gmail.com

***Why rent offices when you can own?
Owning is almost always far better, so
spread the word!***

The Schaperows are selling a portion of their Waterford Professional Complex condos. Email PsychologyCenterOffice@gmail.com, or call/text 8602715233 to inquire.

If you know anyone who's leasing, please let them know of this tremendous opportunity and forward them our contact info.

Psychology CT LLC is **seeking renters**, as we have **beautiful offices available** in Waterford. These offices are perfect for professionals (e.g., therapists, massage therapists, small practice attorneys & accountants, certain kinds of physicians, etc.), especially those that don't need a reception area, but may still benefit from a waiting area. Please see <https://sites.google.com/site/schaperowpsychology/office> for details, or email psychologycenteroffice@gmail.com for more information.



TEMPLE EMANU-EL
PO BOX 288
WATERFORD, CT 06385

Please use PO BOX 288 WATERFORD, CT 06385
when mailing material to the temple

Non-Profit
Organization
U.S. Postage PAID
New London, CT
06320
Permit #480

Deadline for Dec 2022 Bulletin is Friday, Nov. 11

Email your articles to Roberta at office@tewaterford.org

CHANGE SERVICE REQUESTED

Our Leadership

Rabbi / Marc Ekstrand / rabbi@tewaterford.org
Rabbi Emeritus / Aaron Rosenberg / arloveskr@aol.com
Cantorial Soloist / Sherry Barnes /
cantorialsoloist@tewaterford.org
President / Andy Parad / president@tewaterford.org
1st Vice President / Armi Rowe
VP of Building and Grounds / Open
buildingsgrounds@tewaterford.org
VP of Religious Practices / Claire Warren
Treasurer / John Murphy / treasurer@tewaterford.org
Vice Treasurer / Bruce Goldstein
Recording Secretary / Jo Michaelson
Corresponding Secretary / Deborah Linder
Immediate Past President / Jo-el Fernandez
pastpresident@tewaterford.org
3 Year Trustees: Rebecca Haynes, Marcia Reinhard, Patricia Sher,
OPEN
2 Year Trustees: Michael Barnett, Michele Caton,
Jonathan Rowe, Janine Sitko
1 Year Trustees: Robbin Alpert, Susan Cramer, Amy Perry,
Shoshana Weiss

Social Action Co-Chairs / Karen Bloustine & Sybil Nassau
Sisterhood / Barbara Senges/ sisterhood@tewaterford.org
Gift Shop / Anne Cohn & Lisa Marcus /
judaicashop@tewaterford.org
Brotherhood / Richard McCaffrey & Nathaniel Rowe /
brotherhood@tewaterford.org
Kitchen Committee Chair / Edee Smith
Religious School Committee Chair:
Religious School Administrator / Rachel O'Brien /
religiousschool@tewaterford.org
Office Administrator / Roberta Reisner-Winograd /
office@tewaterford.org
Webmaster / Aaron Kaplan / webmaster2@tewaterford.org
Custodian / Don Kasper
Bulletin Editor / Mimi Perl
Temple Location: 29 Dayton Road, Waterford, CT 06385
Temple Mailing Address: PO Box 288, Waterford, CT 06385
Office: **860-443-3005**
Religious School: **860-443-3005**
Website: www.tewaterford.org