



Rabbi's Message - Marc Ekstrand

Friends,

Al sh'losha d'varim ha'olam omeid – the world is supported by three things – *al ha'Torah, v'al*

ha'avodah, v'al g'milut chasadim – the collective wisdom of our people (Torah), being in service, and upon *chesed*, acts of loving-kindness. This maxim was expressed by the rabbis who were engaged in transforming Judaism from the sacrificial cult of the second Temple to the rabbinic Judaism which is the basis for all Jewish life today. It was recorded in Mishnah Pirkei Avot 1:2. Even if you don't actively study Mishnah, you likely encounter this text in song. We sing it routinely during the *hakafah*, Torah procession, on Shabbat. However, here is how we can do more than sing the words.

Al ha'Torah -- starting in February, we will be adding another learning opportunity each week. Each Wednesday at 12:30 PM will be a Torah study group. Sometimes we will focus directly on *parashat ha'shavua*, the weekly Torah portion. Other times Torah will be a jumping-off point to focus on other Jewish texts and thought, ancient to modern. Yet other times, Torah will be in the background while we discuss things that affect our lives as Jews. I'll trust the group's curiosity to guide us on our weekly journeys.

Al ha'avodah -- a great testament to rabbinic creativity was the transformation from sacrifice-centered religion of the second Temple period to the prayer centered religion of rabbinic Judaism. Our most frequent opportunity to engage in communal prayer is our Friday evening Shabbat services. Abraham Joshua Heschel wrote in The Sabbath, "The Sabbath is not for the sake of the weekdays; the weekdays are for the sake of the Sabbath. It is not an interlude but the climax of living." It can only be the *Palace in Time* that Heschel describes if we embrace this weekly opportunity. The most influential thing my mother did for me was to bring me with her to Shabbat services most Fri-

day nights. This was not easy for her. We are *all* tired Friday evening, but if we can embrace Heschel's thinking, work ahead if we can, schedule ahead if we can, and get our loved ones organized if we can – we *can* **make room for Shabbat**. I am dedicated to making our Shabbat worship meaningful, relevant, accessible, and engaging for everyone in our congregational community. Please remember that we have changed our service time to 6:30 PM.

Al g'milut chasidim – upon 'loving deeds' or 'acts of loving-kindness.' The acts or actions of *g'milut chasadim* indicate a deep connection of faithfulness, loyalty, fidelity, allegiance, and devotion. To do *g'milut chasadim* is to express an elevated depth of commitment to the thing acted upon or toward. You probably engage in such acts, but I want to suggest another opportunity. In the coming weeks, there will be several opportunities to join in small conversations with your fellow congregants (see later in this bulletin). These conversations are forums to express how you feel about what Temple Emanu-El is now and what we should be striving for together. Giving your voice will be an act of *g'milut chasadim*. Being in conversation, even just listening, expresses a deep commitment to our mission of being a vibrant Reform community centered on learning, spirituality, and community gathering. I will be at as many of these gatherings as possible. I hope to see you there.

In the meantime, let's sing (and do) together, *Al sh'losha d'varim...*

L'shalom,

Rabbi Marc



President's Message - Andy Parad

As we head into the middle of winter, it's easy to become disconnected with the world around us. There are less activities going on, less to do outside, less chance to bump into people – and when you do the interaction is likely brief and cold. That's part of why the Board is bringing back a "Coffee House" series of meetings; to allow people to get together at a time of year when it's hard to get together, and let us get some feedback about what is going on around the Temple and to get ideas on how we can do better. How to better reach people. How to get people more engaged. So be on the lookout for this line-up on page 11 in this Bulletin.

While we are talking about coffee as a way to unite people, let's talk about another important way to bring people together: bagels! Brotherhood Bagels rebranded as the Sunday Morning Café is off and running. I think they have made some smart decisions with their relaunch. The biggest and most obvious of which is the intermittent lox reward system. For those of you who aren't aware of what's been going on, I'll break down

my observations. While traditionally (i.e. pre-COVID) lox could be had almost religiously the first Sunday of each month and throngs of people would show up for that Sunday, now it's like the Wild West. And I think that's a good thing. As soon as people catch on that lox may be available, I think we will see an uptick in people checking it out. We could learn a thing or two about intermittent rewards and how the brain works from our local gambling institutions, and I think the Brotherhood has leveraged this well. I'm usually there anyway, but anyone who wants to chance their lox (terrible pun), come on down and join us at the Sunday Morning Café. It's a great place to herring* around.

Andy

Note: herring available seasonally at major events only, no purchase necessary to enter. Small donations appreciated.

Notes from Sherry Barnes



I've probably told you before that music has been a part of my life since I was little. My parents loved all kinds of music and there was always music playing in the house and in the car. I remember when the Jewish Holidays would come around, my mother would put on

the records that contained some beautiful Jewish music. The one that sticks in my head the most is Shabbat Hamalkah, it is on page 10 in our siddur. The all-male choir made the song sound so mystical, even tranquil to me as a kid and an adult.

When I accepted the position as Cantorial Soloist, I was thrilled to sing this song to the melody I had heard as a kid. Listening to that song now, always brings back memories of those days. Though I love the comfort of the melodies I have sung for over 30 years, there are always beautiful pieces being composed for prayers all the time.

I found Debbie Friedman's music early on. Her music touched me in a different way. For me, a deeper, more

spiritual way. Debbie was born on February 23, 1951 and sadly passed on January 9, 2011. Definitely a loss to our Jewish Community. Over the years, we've incorporated much of her music into our service. I think her Mi Shebeirach and Havdalah blessings are universal. Her Mi Chamocha and Oseh Shalom are upbeat and catchy.

We've also brought in music by newer composers, such as Noah Aronson. I love his Bar'chu, Adonai S'fati, and Let There be Love, which are woven into our Kabbalat Shabbat Services. Elana Arian's Hinei Mah Tov, opens our Kabbalat Shabbat service. I love it because it speaks to me. "How good it is, How sweet it is, to be together on this day." The same sentiment is stated in Shabbat Hamalkah! "Come gather to welcome the Sabbath, our queen." We use many different melodies for L'cha Dodi which also welcomes the Sabbath bride into our midst. We have traditional melodies and contemporary melodies for this. The contemporary melodies include Craig Taubman, Elana Arian, and Or and Feliza Zohar. Old or new, I love them all.

I joined this synagogue in 1987. I've been singing on

CONTINUED ON PAGE 3

Notes from Sherry Barnes (continued from page 2)

the bimah since 2000 when I split time with our then student cantor, Jeff Stock. Each of our student cantors and even our Rabbi's, have brought new music to our services. Some of the pieces have stayed and others have gone. I feel music opens our hearts to prayer.

If there is music that you miss or something new that you have heard, please share it with me or Rabbi Marc. Let us know when you are going to be at Shabbat services and we'll fit it in.

I'm leaving you with links to an artist I have been listening to. His name is Rabbi Josh Warshawsky. You can check him out at his website: <http://joshwarsky.com>

These are a few of my favorites starting with his version of Shabbat Hamalka.

[Hachamah \(Bo'ee Kallah\) - YouTube](#)

[Yedid Nefesh | Josh Warshawsky](#)

[Wonder \(Asher Yatzar\) - Rabbi Josh Warshawsky - YouTube](#)

[Hame'irah \(המאירה\) - Coleen Dieker and Josh Warshawsky - YouTube](#)

B'shir,

Sherry

Sisterhood -- Barbara Senges, President

Dear Ladies,

At our February Board meeting, we will be welcoming two new members to our Board. Debra Wool, who has been organizing the weekly walking group, will be replacing Eileen Shapiro as Recording Secretary. Eileen Shapiro has graciously volunteered to take over as Sisterhood Treasurer. Jennifer Zettler will be joining the Board in a new position - Membership Chair. In the past, the president and the treasurer have shared this responsibility. With Jennifer focusing only on Membership we hope to do more to assimilate and welcome new members to the group. A very big thanks to Debra, Eileen and Jennifer!

During our January meeting, the Board planned all our events and projects for the remainder of 2022-23 year. This article will highlight the activities coming up in February and March, as well as some "save the dates" for April, May and June.

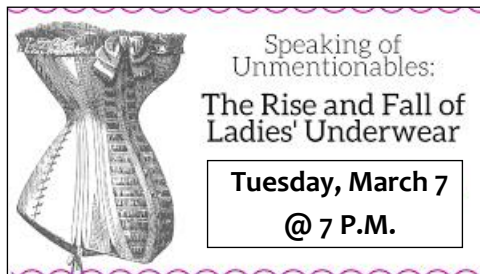


Our last **Trivia Event** for this year will take place on Zoom on **Tuesday, February 7 at 7:00PM.**

On **Wednesday, March 15**, Merrill Mazzella will be organizing one of our famous **Dinner Club** evenings at a local restaurant.

On **Wednesday, February 22 and Thursday, March 30**, Merrill is reintroducing the popular **Movie Nights**. As

Niantic Cinema is now closed, Movie Nights will take place in Waterford and/or Mystic. Details will be sent out via email and will be published in the Friday message.



What did the brassiere say to the hat?

"You go on a head while I give these two a lift."

Well known Chicago performer Ellie of Ellie Presents will visit us on Zoom on **Tuesday, March 7 at 7:00PM** with her popular talk, **Speaking of Unmentionables: The Rise & Fall of Ladies' Underwear** which is probably Ellie's most requested performance. **Speaking of Unmentionables: The Rise & Fall of Ladies' Underwear** ce. This novel and at times slightly naughty presentation unveils facts and exposes myths about women's unmentionables. It includes stories from real women past and present and the amusing and sometimes uncomfortable relationship with their foundations.

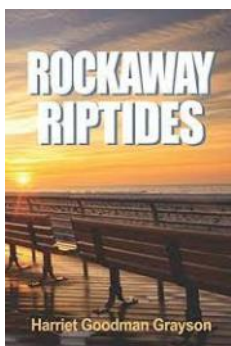
Ellie plays several women from the past as artistic portrayals and gives many talks on Domestic Arts topics of which **Speaking of Unmentionables: The Rise & Fall of Ladies' Underwear** is a special audience favorite. Ellie has traveled all over the country with it. The talk takes

CONTINUED ON PAGE 4

Sisterhood -- Barbara Senges, President -- continued from p. 3

the audience on a tour through the fashion timeline... underneath the dresses. Ellie shows many examples of historic underwear, both reproduction and authentic, as illustrations.

This should prove to be a unique, funny and entertaining event! WE ARE HOPING FOR A BIG TURNOUT.



Don't forget our Book Club on **Sunday, March 12 at 2:00PM on Zoom.**

We are reading "Rockaway Riptides" by local Jewish author, Harriet Grayson, who will be joining us.

We will be assembling **Purim Bags** for the **Friendly Visitor Program** on

Wednesday, March 1 at 12:00PM

and **Passover Bags** on **Monday,**

March 27 at 10:00AM at the synagogue. Your help is greatly appreciated!

MARK YOUR CALENDARS FOR

THESE UPCOMING EVENTS:

- Tuesday, April 18 at 7:00PM - Yom Hashoah Presentation and Discussion with Rabbi Marc at the Synagogue
- Tuesday, April 25 - Smith's Acres
- Saturday, April 29 at 6:30PM - Havdalah, Concert
- Wednesday, June 7 at 2:00PM - "Gypsy" at Good-speed

The Sisterhood Shabbat Service and the End of the Year Paid-Up Membership Dinner will both occur in May. Dates will follow in the March Bulletin.

Hope to see all of you at our upcoming events!

Barbara Senges

Sisterhood President

TEMPLE EMANU-EL GIFT SHOP

Anne and Lisa continue to expand their offerings at the gift shop. January was all about collecting samples and catalogues for tallit and kippot in



preparations for the spring and summer Bar & Bat Mitzvahs. February will be for updating the website. We continue to open the shop almost weekly and are available by appointment. We will post our upcoming schedule on the Facebook site in the coming weeks. Thanks to everyone for continuing to support our shop!

Temple Emanu-El Religious School (TERS)- Rachel O'Brien

It's hard to believe that we've already reached the halfway mark for this school year! We are enthusiastically diving into the second half of the year with lots of new things to learn and holidays to celebrate together.

January's First Friday Family Share Shabbat had a great turnout. It was amazing to see our students and their families come together and be part of our Shabbat service. Remember if your family and/or student would like a part



of our Family Share Shabbat, parts are made available a week or two in advance directly after religious school. You can also email the Rabbi or myself to claim your part of the service. One of our goals at Religious School is to create a strong sense of Jewish community for all of our students. Attending

Share Shabbat goes a long way in this endeavor. This month, we hope you will join us on the **First Friday of**

CONTINUED ON PAGE 5

Temple Emanu-El Religious School (TERS)- Rachel O'Brien

the month, February 7 at 6:30pm, for our next First Friday Family Share Shabbat followed by an Oneg sponsored by TERS.

On February 5 TERS will celebrate Tu B'Shevat. At



TERS we think of TuB'Shevat as a sort of Jewish Earth Day. The Torah teaches us not only to be good to each other but also to care for the environment that we were given. To help celebrate Tu B'Shevat, Temple

Emanu-El Religious School will host a very special Tu B'Shevat program with the help of the Denison Pequotsepos Nature Center. Representatives from the center will come to TERS with a wonderful program on trees. This will be followed by a special program by Emissaries Omer and Uma and a very unique Ice Cream Tu B'Shevat Seder. **Special thanks to the Ruth Brody Fund for making this holiday celebration possible.**

Sunday, February 5 we also bid a farewell to Omer and Uma as they return to Israel for a few weeks to be with their families and friends. Please wish Omer and Uma safe travels if you see them around school. We will miss them both and can't wait for them to return in March!



Mark your calendar, February 25 will be our next Havdalah in Pajamas! Please join us for a short Havdalah service followed by dinner, BBYO of course. The theme this month is Game Night, and we ask students to bring their favorite board game to share with their classmates. Parents will have the opportunity for some adult schmoozing as we did for our last Havdalah in Pajamas. Please join us for another wonderful opportunity to connect to our TERS community.

Although spring is getting close, we're not there yet! Please remember that we will follow the inclement weather snow/ice closing schedule of the Waterford school district on Wednesdays. We will notify parents by 12:00 through a Remind app text regarding any exceptions. We would only keep school open if road conditions are deemed safe by school time. For Sunday closures, we will do our best to make a decision on Saturday night and will notify parents via the Remind app and email.

All the best,

Rachel



First Share Shabbat held in January 2023.

February Birthdays

arrison Howard Arruda
 Nicole Arruda
 Spencer Bentley
 Jacob Feinstein
 Barry Feldman
 Abraham Fisher
 Casey Flax
 Shayna Fox- Norwitz
 Elsa Freedman
 Allison Sue Glickman
 Amy Golden
 Andrew Goldman
 Helen Goldstein

Jack Haynes
 Autumn Hicks
 Viviane Holwitt
 Peter Kallan
 Jillian Kallan
 Jerry Kil
 Barbara Kil
 Philip Krasney
 Ben Lazarus
 Harriet Lesko
 Camden
 Levine
 Robert Lewellyn
 Joseph Lewellyn



Jared Miah Linder
 Regina Magnus-Aryitey
 Lisa Marcus
 Gregory Morea
 Andrew
 Parad
 Matthew
 Perl
 Jacob
 Reinhard
 Amanda
 Rowe
 Mark Rubin
 Ann Schwartz
 Gregg Selke
 Philip Shapiro

Tracy Shoor
 Ira Sitko
 Jessica Sitko
 Leslie Spees
 Elisha Stavropoulos
 Pamela Stein Naccarato
 Joel Suisman
 Barry Thorp
 Nancy Trostler
 Robert Trostler
 Kenneth Webman
 Henry Weinberg
 Sherry Zelvin
 Amanda E. Zettler
 Arya Luna Ziv

Anniversaries

Rachel and Michael
 O'Brien

Aaron and Karen
 Rosenberg

Donald and Lois Steinman



February Yahrzeits

Harriette Siegel
 Henrietta Weber
 Shelly Weinberg
 Harold Wolfe

February 10

Larry Axmaker
 Helene Bloom
 Joseph Thomas Furman
 Jack Greenberg
 David Hillsberg
 Nathan Rubin
 Sheldon Schlissel
 Louis Shoor
 Clara Sibelman
 Bessie Snitman
 Paul Wharton
 Pauline Ruth Wildstein

February 17

Jennie Atkind
 Dorothy Benmaor
 Samuel Cohen
 Philip Crystal
 Larry Cushman
 Ruth Dunkerley
 Ruth Fearer
 Merton Goldstein

Eleanor Katz
 Joseph Lewiss
 Emanuel Luftglass
 Pauline Mann
 Lillian Miller
 Albert Punty
 Victor David Rosen
 Leo Scharfman
 Fannie Schlissel
 Richard Seidner
 Harold Shapiro
 Joseph Shepard
 Benjamin Sherman
 Sheba Lazev Stark
 Helen Stein
 William Surnamer
 Phyllis Thall
 John Zarcheck

February 24

Gerald Baker
 Julia Barnett
 Rhoda Feinstein
 Lou Freeman
 Marilyn Freeman
 Glenn Gerber
 Ivan Glickman
 Howard Helveston

Eva Isaacson
 Carl Isaacson
 Eva Kozek
 Harold Margolis
 Nathan Novar
 Charles Reisner
 Norman Ruderman
 Norman Schnur
 Mary Kelley Smith
 Benjamin Stricker
 Elizabeth Weber
 Jack Zavatsky
 Phyllis Zettler



Yahrzeits

February 3

Helen Arbetter
 Miriam Shoor Ballot
 Frances Bloomfield
 Joan Cherry
 Frank Church
 Ruth Freeman
 Eleanor Freeman
 Youne Frydel
 Harold Goldman
 Richard Grills
 Gerhard Hausmann
 Gladys Ilson
 Allen Kaufman
 Bernice Moss
 Flora Nassau



Condolences to...

Robin Margolis Silsby and John Silsby
on the passing of Robin's mother,
Katherine M. Thibault



Mazal tov to...



Amanda and Dylan Williams; they had a baby girl, **Asa Jane Williams** on 12/26/22. Asa is also little sister to Ophelia, granddaughter to **David and Keli Levine** and great-granddaughter of **Joan Levine**.

The **Bentley and Wolfe Family**; **Louise Effey** was born January 6 at 12:20 A.M. Louise is the granddaughter of **Barbara and Scott Wolfe and the late Bill Bentley**.

Louise was born in Nashville to parents
Spencer and Elle Bentley.

Violet and Gavier Greenmoor who are delighted to announce the birth of their son, **Felix Daniel Greenmoor**, at 7:43 AM on January 13! Felix is the first grandchild of **Andrea and Paul Kanfer** and third grandchild of **Ida and Gavier Figueroa**.

Office News from Roberta Reisner-Winograd

I will be out of the office for the month of February. While many volunteers are stepping up to keep temple operations running smoothly, no one will be in the office on a regular basis.

During the month of February, when calling the Temple please select option 2 -Rabbi Marc Ekstrand, option 3 - Cantorial Soloist Sherry Barnes, or the option 4 religious school.

If you would like to visit the temple to drop off a payment in the metal box on the office door, call ahead, and make sure someone is in the building to let you in. 860-443-3005. If you wish to make a credit card pay-

ment towards the Purim Mishloach Manot Fundraiser or if you wish to make a credit card payment toward the Temple Emanu-El Passover Seder, please do so by going to the temple website, www.tewaterford.org and click on "donate", and select either Purim Mishloach Manot Fundraiser or the Passover Seder 2023, and complete your payment.

Thank you to all the volunteers who are helping out.

Respectfully,

Roberta

Office Administrator



We are eternally thankful for the support of those below

Aaron and Pearl Parker Religious School Fund

Michelle Pievsky

Cantor's Fund

Barbara Luftglass-Morea

-- in memory of Eleanor Grossman

Dr. Sanford Blank Computer Fund

Ian Greber-Raines

-- in memory of Caren Linden

Essential Services Fund

Aaron Weber

-- in memory of Caren Linden

Arthur and Pamela Fox

-- in memory of Caren Linden

Barbara and Peter Kallan

-- in memory of Caren Linden

Charles and Romana Primus

-- in memory of Caren Linden

David Reisfeld

-- in memory of Caren Linden

Deborah Linder

-- in memory of Caren Linden, a great person who will be missed dearly

Donald and Lois Steinman

-- in memory of Caren Linden

Dr. James & Marie Walker

-- in memory of Caren Linden

Friends of Oswegatchie Hills Nature Preserve

-- in memory of Caren Linden

Gail and Steve Weber

-- in loving memory of Harry Weber on his yahrzeit

-- in loving memory of our friend Caren Linden

-- in honor of the birth of Louise Bentley, granddaughter of Barbara Wolfe and the late Bill Bentley

Gerry & Hali Keeler, and Emily Keeler Alhadeff

-- in memory of Caren Linden, with condolences to the family

Harvey, Leslie, Stacey, Jessica and Jason Orenstein

-- with warm thoughts to the Linden family and beautiful memories of Caren

Jo Anne and Murry Rubin

-- in memory of Caren Linden

Jo Michaelson

-- in memory of Caren Linden

Joanna and Martin Lazarus

-- in memory of Caren Linden

--in loving memory of Murray Lazarus on his yahrzeit
John & Wendy Madsen

--in memory of Caren Linden

Karen Dinsfriend

--in memory of Caren Linden

Kathleen Moore

--in memory of Caren Linden; all my love to Todd and the whole Linden family

Kenn and Kim Fischburg

--in memory of Caren Linden

Laurie and Eric Warner & family

--in memory of Caren Linden

Linda and John Antonino

--in memory of Caren Linden; our deepest condolences to Dr. Linden and his family, we are truly sorry

Madeline Coakley

--in memory of Caren Linden

Maria and Steen Powell

--in memory of Sandra Auerbach

Marjorie and Kevin Donnelly

--in memory of Caren Fox Linden

Mark Newall and Shoshanna Weiss

--in loving memory of Nancy Newall on her yahrzeit

--in loving memory of Mynna Weiss on her yahrzeit

Nancy Brand

--in memory of Caren Linden

Nathan and Shelley Weiss

--in memory of Caren Linden

Nicholas J Carino

--in memory of Caren Linden

Patricia and Jay Hans

--in loving memory of Caren Linden

Robert Linden

--in memory of Caren Linden and in appreciation of Sherry Barnes

Robyn and Alan Krasner

--in memory of Caren Linden

Roz and Paul Kline

--in loving memory of Caren Linden

Sandy Greenhouse and Jo-el Fernandez

--in memory of our friend, Caren Linden

Sue and Chris Fornara and Family

--in memory of Caren Linden

The Kil Family

--in loving memory of Barbara Kil on her yahrzeit

Continued on page 9

Please make checks payable to Temple Emanu-El and remit to PO Box 288, Waterford, CT 06385

We are eternally thankful for the support of those below—continued from pg 8

Mitzvah Fund

Michael and Flossie Betten
---condolences to Bob Linden and family on the passing of Caren Linden
Michele Snitkin
---in memory of Louis Snitkin on his yahrzeit

Prayer Book Fund

Joan M Levine
---in memory of Jules Levine on his yahrzeit
---in memory of Grace Wertheim on her yahrzeit

Rabbi Aaron Rosenberg Tikkun Olam Award

Sue and Chris Fornara and Family
Katherine Rosen
Matthew and Florence Lewiss
---in loving memory of Sylvia Lewiss on her yahrzeit
Michael and Flossie Betten
---congratulations to Barbara and Scott Wolfe on the birth of their granddaughter Louise Effey Bentley
Rabbi Aaron and Karen Rosenberg
---in memory of Roseleah Stein on her yahrzeit
Sherry Wolfe
---mazel Tov to Scott and Barbara Wolfe. I am so happy for the family.

Sherry Wolfe and family
---in memory of Harold Wolfe on his yahrzeit;
“I am always thinking of you”

Rabbi's Discretionary Fund

Rebecca Ballesteros
David and Keli Levine
---in honor of the birth of our granddaughter Asa Jane Williams
Jane and Chic Weinberg
---in loving memory of Al Weinberg on his yahrzeit
Judith Glickstein
---in memory of Caren Linden
Robert Linden
---in memory of Caren Linden and in appreciation of Rabbi Marc Ekstrand
Sybil Nassau and Family
---in memory of Ginger Horton

Ruth Joan Brody Religious School Fund

Leslie Spees
---in loving memory of Dorothy Segool on her yahrzeit

Invitation by Karen Bloustine to Explore Our Shtetl Roots

So many of us have family backgrounds in Eastern Europe, in the Pale of Settlement that was Ukraine, Belarus, Poland, and Lithuania. Some of us have roots in Germany and other lands.

I am excited to be part of a journey taking us back to our family roots and hope you will join me - by learning about and sharing your family's history.

On **March 14, at 7 p.m.**, JFEC and Hadassah are presenting a Zoom and In-person program at Temple Emanu-El entitled: “Are We Lantzmen? Exploring our Shtetl Roots”. Our guest speaker, Lisa Brahin, has authored a book entitled “Tears over Russia” - which chronicles her family's flight from the programs in Russia between 1917 and 1921. Besides sharing her family's story, Lisa will help us explore our “Shtetl” roots - be they in Eastern Europe, Germany, or other lands from whence our families fled. She has the genealogical knowledge and tools to help you in your exploration. After her initial program - we will sched-

ule an interactive program where we can all contribute.

How much do you know about your family's historical roots? We would love you to share that with us - and tune in to our program to learn more. We are collecting the stories of our ancestors on whose shoulders we were able to make good and safe lives. Will we leave a legacy of knowledge and gratitude for our children and grandchildren?

So join me in our journey of exploration. Tell us what you know about your family history - send me any photos or information you may have - and stay tuned for our program and further information to help you explore further. The flyer for our program is here. Register for in-person or Zoom by emailing Karen Bloustine at bloustinek@gmail.com. Book is available at the Groton Public Library.

February Events & Service Schedule

Wed.	Feb. 1	4:30 P.M.	Religious School
Fri.	Feb. 3	6:30 P.M.	Share Shabbat Shabbat Shira HIAS Refugee Shabbat Religious School providing Oneg
Sat.	Feb. 4	7:00 P.M.	Cabaret – Appetizers, Havdalah, Variety Show and Desserts
Sun.	Feb. 5	9:00 A.M.	Sunday Morning Cafe
		9:30 A.M.	Religious School – Tu B'Shevat Special Program
		10:30 A.M.	Preschool
Mon.	Feb. 6	12:00 A.M.	Federation Senior Lunch
		6:00 P.M.	Jewish Community High School
Tues.	Feb. 7	7:00 P.M.	Sisterhood Trivia Night on Zoom
Wed.	Feb. 8	4:30 P.M.	Religious School
		7:30 P.M.	Board of Trustees Meeting
Fri.	Feb. 10	6:30 P.M.	Kabbalat Shabbat
Sun.	Feb. 12	9:00 A.M.	Sunday Morning Café
		9:00 A.M.	Religious School
Mon.	Feb. 13	12:00 A.M.	Federation Senior Lunch
		6:00 P.M.	Jewish Community High School
		7:00 P.M.	Coffee House here at Temple Emanu-El
Wed.	Feb. 15	4:30 P.M.	Coffee House here at Temple Emanu-El
		4:30 P.M.	Religious School
		7:00 P.M.	Coffee House here at a home in New London
Fri.	Feb. 17	6:30 P.M.	Kabbalat Shabbat Service Temple Emanu-El Sisterhood and Baking Club Sponsoring Oneg
Sun.	Feb. 19	1:00 P.M.	Coffee House at a home in Niantic
Tues.	Feb. 21	7:00 P.M.	Coffee House at a home in Mystic
Wed.	Feb. 22	4:30 P.M.	Religious School
		TBA	Sisterhood Movie Sat. night location TBA
Fri.	Feb. 24	6:30 P.M.	Kabbalat Shabbat
Sat.	Feb. 25	TBA	Religious School Pajama Havdalah
Sun.	Feb. 26	9:00 A.M.	Sunday Morning Café
		9:00 A.M.	Religious School
		10:30 A.M.	Preschool
		2:00 P.M.	Coffee House at a home in Bozrah
		7:00 P.M.	Coffee House at a home in Waterford
Mon.	Feb. 27	12:00 P.M.	Federation Senior Lunch – RSVP to JFEC
		6:00 P.M.	Jewish Community High School
		7:00 P.M.	Coffee House via Zoom
Wed.	March 1	4:30 P.M.	Religious School
Fri.	March 3	6:30 P.M.	Kabbalat Shabbat





Let's catch up with fellow members at an upcoming Coffee House.

Let's hear what everyone's lives have been like post-pandemic.

AND...

Let's share ideas for the future of our community.

What is most important to you and your family?

What do you need most from Temple life?

Choose the best location and time for you.

Date and Time	Town/Location	Coffee-House Host
Mon Feb 13 at 7:00 pm	Waterford at Temple Emanu-El	John Murphy
Wed Feb 15 at 4:30 pm*	Waterford at Temple Emanu-El	Barbara Senges-Murphy
Wed Feb 15 at 7:00 pm	New London at The Perry/Posage home	Amy Perry & Shoshana Weiss
Sun Feb 19 at 1:00 pm	Niantic at The Barnetts' home	Michael Barnett & Claire Warren
Tues Feb 21 at 7:00 pm	Mystic at The Reinhard's home	Marcia Reinhard
Sun Feb 26 at 2:00 pm	Bozrah at The Bettens' home	Mike & Flossie Betten
Sun Feb 26 at 7:00 pm	Waterford at The Rowes' home	Jonathan & Armi Rowe
Mon Feb 27 at 7:00 pm	Via Zoom meeting	Jo-el Fernandez

*NOTE: This session designated for religious school families.

Please RSVP to 860-460-3047 to RSVP to coffee house host and receive directions.

Each coffee house hosted in a home will accommodate a limited number of attendees.



Mishloach Manot Purim Bags

Purim is a time to celebrate our story of Esther. She was a heroine who allowed us to live during a time when Haman threatened our existence. Be happy. Celebrate with a Purim tradition of giving goodies to your friends. Participate in Temple Emanu-El's Mishloach Manot Fundraiser.



Mishloach Manot Bags will be delivered to your door by temple volunteers.

Each bag will contain Purim goodies and delicious hamantaschen.

✂ Name: _____

Address for delivery: _____

Phone: _____

Enclosed is my donation (check one):

\$180 to send a Mishloach Manot Bag to every congregant

\$18 to send a Mishloach Manot Bag to myself

Please make checks payable to Temple Emanu-El.

Send this completed order form with payment by February 28, 2023 to:

Temple Emanu-El
PO Box 288
Waterford, CT 06385

If you prefer to pay by credit card please go to <http://www.tewaterford.org> , click on Donate button, and select "Purim Mishloach Manot Fundraiser" on the donation page.

HOWARD ILSON MEMORIAL TEMPLE EMANU-EL DISTINGUISHED SERVICE AWARD

Nominations are now being accepted for the **Ilson Award**, which is given annually to a member who has contributed to Temple Emanu-El in an important way. The award is in honor of Howard Ilson, a former president of our Temple who died suddenly while in office.

Areas of service to consider include:

- ~ Years of service as an officer or Board member
- ~ Years as a committee chairperson
- ~ Years of service in auxiliaries such as the Religious School, Sisterhood, Brotherhood
- ~ Years of community service as a representative of Temple Emanu-El
- ~ Years of time and energy expended for the betterment of Temple Emanu-El

Nominations will be accepted until March 1. The award committee will then review the nominations, and the winner will be announced in the Temple *Bulletin*. The award winner will be honored at a Shabbat service, and his or her name will be engraved on a plaque on display in the Temple.

Please take the time to consider a worthy nominee. It is one way of thanking our members for volunteerism that often goes unnoticed. If you wish to nominate someone, please fill out the form and mail or e-mail. All nominations will be strictly confidential.

Howard Ilson Award Nomination Form

Name of person being nominated:

Name of nominator:

Summary of nominee's attributes and service to Temple Emanu-El must be completed for nominee's consideration. Please use a separate piece of paper to complete and send to:

Temple Emanu-El • P.O. Box 288 • Waterford, CT 06385
or temanu-el@sbcglobal.net



WATERFORD, CT

Temple Emanu-El Seder 5783

**Langley's at
Great Neck Country Club**

28 Lamphere Road
Waterford, CT 06385

Wednesday, April 5, 2023 • 6:00 pm

Menu:

Matzo Ball Soup, Gefilte Fish, Chicken,
Tzimmes, Vegetable, Kosher Wine

Please bring a Kosher-for-Passover
dessert to share

RSVP for Passover Seder by March 27th

Please note that all guests must be vaccinated.

Name(s): _____

Phone: _____ E-mail: _____

Number attending: _____ at \$40 per Adult, _____ at \$20 per Child, ages 6–12,
_____ Age 5 & under free **Total Enclosed:** _____

Number of vegan or vegetarian meals: _____

Seating will be pre-arranged. Please include requests for guests at your table. Dinner will be buffet style.

Return this form with payment to: Temple Emanu-El • PO Box 288 • Waterford, CT 06385

If you prefer to pay by credit card, please go to <http://www.tewaterford.org>, click the Donate button, and select "Passover Seder 2023" under Choose A Fund on the donation page.

Questions? Call Barbara Senges: 860-608-1187

BUILDING A VIBRANT COMMUNITY THROUGH REFORM JUDAISM

Join us for a fun evening

CABARET NIGHT 2023

Saturday, February 4, 2023 at 7:00 pm

Temple Emanu-El Social Hall

Appetizers, Havdalah, Variety Show & Dessert

\$36 suggested donation per person

Benefits the Essential Services Fund

In person at 29 Dayton Road, Waterford &
via Zoom for those who RSVP

Please RSVP by 1/29/23



JFEC & Hadassah present

Are We Lantzmen?

Exploring our Shtetl Roots

Tuesday March 14, 2023

at 7:00 p.m.

Temple Emanu-El

29 Dayton Rd., Waterford CT

Join Hadassah and JFEC for a special hybrid program about our historical roots in the shtetlech (small towns) in the European Pale of Settlement from where so many of us descend. Author and genealogist, Lisa Brahin, will share insights from her book *Tears Over Russia*, which recounts her family's flight from the pogroms in Russia and will help you explore your own family's shtetl roots.

Please contact Karen Bloustine at bloustinek@gmail.com to reserve an in-person seat OR to register for the Zoom link.





JOIN US WEEKLY
IN THE SOCIAL HALL

Sunday Morning Cafe

9:00 AM - 12:00 PM

Catch up with friends or your e-mail,
meet with a committee, read the newspaper,
or meet some new people
over bagels and coffee.



COMPLIMENTS OF
TEMPLE EMANU-EL BROTHERHOOD

Join Temple Emanu-El's Baking Club



Call 860.608.4835 or email rmccaffrey@snet.net
for more info



**FOR ALL YOUR
REAL ESTATE NEEDS**

Direct: 860-443-4400 Cell: 860-625-5255
Email: Geoff@CallTheHouseMan.com
Website: www.CallTheHouseman.com
Blog: CTHouseMan.com



More than fast. More than signs.™

Cam McCormack
Visual Communications Specialist
Whaling City Graphics LLC

860-437-7446
cam.586@fastsigns.com
waterford@fastsigns.com
www.fastsigns.com/586

217 Boston Post Road
Waterford, CT 06385

PsychologyCT.com

Schaperow Psychology & Associates:
Thorough diagnostic assessments: psychological testing; individual, group, marital, & family therapy

Drug & Alcohol Treatment:
Clinicians that specialize in drug & alcohol treatment.

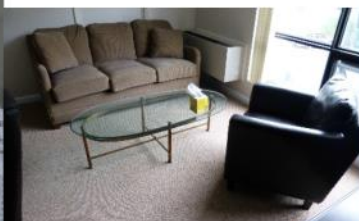
And:
Cognitive Behavioral Therapy (CBT) Center:
Evidence-based CBT to improve mental health, and decrease stress for certain physical illnesses.
860-447-2047 / PsychologyCenterOffice@gmail.com

***Why rent offices when you can own?
Owning is almost always far better, so
spread the word!***

The Schaperows are selling a portion of their Waterford Professional Complex condos. Email PsychologyCenterOffice@gmail.com, or call/text 8602715233 to inquire.

If you know anyone who's leasing, please let them know of this tremendous opportunity and forward them our contact info.

Psychology CT LLC is **seeking renters**, as we have **beautiful offices available** in Waterford. These offices are perfect for professionals (e.g., therapists, massage therapists, small practice attorneys & accountants, certain kinds of physicians, etc.), especially those that don't need a reception area, but may still benefit from a waiting area. Please see <https://sites.google.com/site/schaperowpsychology/office> for details, or email psychologycenteroffice@gmail.com for more information.



TEMPLE EMANU-EL
PO BOX 288
WATERFORD, CT 06385

Please use PO BOX 288 WATERFORD, CT 06385
when mailing material to the temple

Non-Profit
Organization
U.S. Postage PAID
New London, CT
06320
Permit #480

Deadline for Feb 2023 Bulletin is Friday, Feb. 10

Email your articles to Roberta at office@tewaterford.org

CHANGE SERVICE REQUESTED

Our Leadership

Rabbi / Marc Ekstrand / rabbi@tewaterford.org
Rabbi Emeritus / Aaron Rosenberg / arloveskr@aol.com
Cantorial Soloist / Sherry Barnes /
cantorialsoloist@tewaterford.org
President / Andy Parad / president@tewaterford.org
1st Vice President / Armi Rowe
VP of Building and Grounds / Open
buildingsgrounds@tewaterford.org
VP of Religious Practices / Claire Warren
Treasurer / John Murphy / treasurer@tewaterford.org
Vice Treasurer / Bruce Goldstein
Recording Secretary / Jo Michaelson
Corresponding Secretary / Deborah Linder
Immediate Past President / Jo-el Fernandez
pastpresident@tewaterford.org
3 Year Trustees: Rebecca Haynes, Marcia Reinhard, Patricia Sher,
OPEN
2 Year Trustees: Michael Barnett, Michele Caton,
Jonathan Rowe, Janine Sitko
1 Year Trustees: Robbin Alpert, Susan Cramer, Amy Perry,
Shoshana Weiss

Social Action Co-Chairs / Karen Bloustine & Sybil Nassau
Sisterhood / Barbara Senges/ sisterhood@tewaterford.org
Gift Shop / Anne Cohn & Lisa Marcus /
judaicashop@tewaterford.org
Brotherhood / Richard McCaffrey & Nathaniel Rowe /
brotherhood@tewaterford.org
Kitchen Committee Chair / Edee Smith
Religious School Committee Chair:
Religious School Administrator / Rachel O'Brien /
religiousschool@tewaterford.org
Office Administrator / Roberta Reisner-Winograd /
office@tewaterford.org
Webmaster / Aaron Kaplan / webmaster2@tewaterford.org
Custodian / Don Kasper
Bulletin Editor / Mimi Perl
Temple Location: 29 Dayton Road, Waterford, CT 06385
Temple Mailing Address: PO Box 288, Waterford, CT 06385
Office: **860-443-3005**
Religious School: **860-443-3005**
Website: www.tewaterford.org