



TEMPLE EMANU-EL'S *Multi-Generational* BREAD & TORAH SHABBATON FRIDAY-SUNDAY, MARCH 8-10, 2024



Rabbis Linda Motzkin and Jonathan Rubenstein, now retired, were co-rabbis for over 36 years at Temple Sinai in Saratoga Springs, NY. In 2004 Rabbis Linda and Jonathan founded the Bread and Torah Project, which offers interactive educational programs based on their scribal arts and baking activities.

Rabbi Linda is a soferet (scribe), Judaic artist, and parchment maker. Her "Community Torah Project" involves participants in the actual making of a Torah scroll through parchment-making, panel-sewing, and proof-reading sessions. Her distinctive midrashic artwork on hand-made parchment offers profound insights into Jewish texts and teaching through a unique aesthetic lens.

Rabbi Jonathan is a bread maker and baking teacher who started a not-for-profit, volunteer community bakery, Slice of Heaven Breads, at their synagogue. His workshops not only enable people to make their own challah, bagels, and other traditional Jewish baked goods. They also present profound spiritual teachings on our relationship to the earth, through Jewish texts and practices regarding preparing and eating food.



All Are Welcome

RSVP by Monday, March 4

Friday 3/8
1:00 p.m.

Challah & Bagel Baking for Shabbat
with Rabbi Jonathan in the Kitchen

Friday 3/8
6:00 p.m.

Shabbat Evening Service (brief & meaningful) plus 6:30pm Dinner
(send RSVP form with payment)

Saturday 3/9
10:00 a.m.

Shabbat Morning Service at The
Novick's Home with Breakfast

Saturday 3/9
7:00 p.m.

Havdalah with Israeli Wine and
Local Farm Cheese & Torah Art Talk
with Rabbi Linda (suggested
donation \$10.00)

Sunday 3/10
9:30 a.m.

Special Program for Our Religious
School Students, including Scribal
Show-N-Tell and Parchment Hide
Stretching with Rabbi Linda and
Challah Baking with Rabbi Jonathan



TEMPLE EMANU-EL'S *Multi-Generational* BREAD & TORAH SHABBATON



FRIDAY-SUNDAY, MARCH 8-10, 2024

Please RSVP by Monday, March 4

by filling out form, indicate number attending for each activity and sending form with payment (if applicable) to: Temple Emanu-El, P.O. Box 288, Waterford, CT 06385 or calling Temple Office (860) 443-3005 to RSVP and then mailing in payment.

Name: _____ Phone: _____

Email: _____ Amount Enclosed: _____

Dinner Menu



Chicken Kebab
(Vegan option: Tofu Kebab)
Cucumber-Tomato Salad
Jeweled Rice

Dessert
sponsored by
The Baking Club

Number
Attending

Friday 3/8
1:00 p.m.

Challah & Bagel Baking for Shabbat
(No Cost)

Friday 3/8
6:00 p.m.

Shabbat Evening Service (brief &
meaningful) plus 6:30pm Dinner (see
Dinner Menu - Adults \$20/Kids \$12)

Saturday 3/9
10:00 a.m.

Shabbat Morning Service at The
Novick's Home + Breakfast (No Cost)

Saturday 3/9
7:00 p.m.

Havdalah with Israeli Wine and
Local Farm Cheese & Torah Art Talk
with Rabbi Linda (suggested
donation \$10.00 per person)

Sunday 3/10
9:30 a.m.

Special Program for Our Religious
School Students, including Scribal
Show-N-Tell and Parchment Hide
Stretching with Rabbi Linda and
Challah Baking with Rabbi Jonathan
(No Cost for all activities)

Rabbi's Message — Marc Ekstrand

Friends,

Our Bread and Torah artists in residence Shabbaton will begin in just a few days. Please see the schedule of programs on page 1 in this bulletin. You will likely find something interesting, delicious, or both throughout the weekend. Thank you to the Bread and Torah team that helped plan and organize our weekend: Sherry Barnes, Hillary Goldstein, Courtney and Ben Miller, Erica McCaffery, Emma Zelken, and Scott Zettler. And thanks to you as well. Because of your ongoing support, we can bring engaging Jewish programs to our community. Every gift is a gift of the heart, building our vibrant community.

One of my favorite verses in the Torah is Exodus 25:8. Just before this verse, Moses ascended Sinai and approached the cloud enveloping the summit where God was dwelling. After seven days, God called out to Moses, and Moses entered the cloud. God's first instruction to Moses was to tell the Israelites to bring gifts to God and that Moses should receive them on God's behalf. Then God tells Moses what to do with these gifts.

" – וְשַׁחַנְתִּי בְתוֹכָם לִי מִקְדָּשׁ *asu li mikdash v'shachanti bitocham* – let them make Me a sanctuary that I may dwell among/in them." During our Kabbalat Shabbat service, we often sing this verse as the closing for the Amidah blessings. The melody seems to have a Shaker origin but became popular in the 1950s as a Christian spiritual. Our song blends our spiritual tradition (Ex 25:8) with words we borrow from those spiritual traditions, "Adonai prepare me to be a sanctuary, pure and holy, tried and true." Wherever Jews go, we pick up things from the cultures and religions we dwell alongside. Sherry and I aren't the only ones bringing this melody infused with Hebrew verses from Torah and Psalms into our sacred space. Two of the most influential congregations in New York, Central Synagogue and Romemu, have also included versions of this song in their liturgy. This song has hit a spiritual chord that crosses denomination and faith lines. Why?

Who we are as a people is embedded in the stories that we tell each other. We are builders. Our God built a beautifully complex universe by speaking it into being. Abraham and Sarah followed God's voice and sojourner throughout the land, gathering people around them and building altars. Joseph helped build an em-

pire for the sake of feeding the world. David and Solomon built a spiritual center in Jerusalem that has resisted destruction and capture for thousands of years. A couple of thousand years later, a group of sixty families gathered on the sands just north of Jaffa and laid out plots to build their homes in what would become one of the most cosmopolitan cities in the world, Tel Aviv. We are Divinely called to be builders.

Exodus 25:8 transforms a call to individuals – Abraham, Sarah, Joseph, David, Solomon, and others, into a call to people. The call is also clarified. It is revealed to Moses that the most extraordinary building we do is from the inside out. God beckons us to bring gifts as our hearts are moved, and we are able to do so. Rabbi Menachem ibn Zerach, in his work *T'zedah laDerech* (*Provisions for the Journey*), wrote, "The Divine presence does not rest in the sanctuary on account of the sanctuary, but on account of Israel, for they constitute the Temple of God." The building begins in our hearts so that God can dwell in and between us. The physical structures we build are only necessary in that they ground each of us in place and time, so that we have a shelter where the world's chaos can melt away, and with us prepared, we can find each other, and God can find us and. Let's keep answering the call, opening our hearts, giving all we can, that we may dwell together and God may dwell in us.

L'shalom,

Rabbi Marc

**WE LOOK FORWARD TO SEEING YOU
AT THE MULTI-GENERATIONAL
BREAD & TORAH SHABBATON**

**FRIDAY, MARCH 8 –
SUNDAY, MARCH 10**

President's Message - Armi Rowe

I recently read an insightful blog about community. It criticized the now very outdated dictionary's definition of the word, which describes it as a group of people within a location sharing a characteristic or interest. The writer was prompted to look up the definition when he saw on the back of his salad bag the invitation to join its Facebook community. He said this marketer's definition was not real.

A true community, he argued, should instead be defined as: **"a group of people who care about each other and feel they belong together."** What's the difference between the two? The second definition points out that there is a relationship between the people in the group. They have found their tribe – a shared identity – and feel accepted for who they really are. Our mission at Temple Emanu-El is to keep on building a vibrant community through Reform Judaism. It's shared action. Guided by our values, we are constantly reaching out within and beyond our own circles to foster a true sense of community.

The first step is to step out of our busy lives, to find some calm in fellowship. The rain, wind, and snow certainly did not stop our congregants from gathering for our winter activities. One hundred of us gathered happily in the social hall for our 9th Annual Cabaret Night on February 3rd. It was a spectacular time for everyone to catch up and be entertained. What a fun evening!

On Friday, February 9, we enjoyed a very special oneg that included fresh baked varieties of babka, rugelach, and a challah from Williamsburg, New York. There was even Chayim Mayim branded black cherry and ginger ale soda. Many thanks to our members Ricardo Kleinbaum and Jeffrey Engel, who sponsored the oneg in memory of their friend, Mitchel Bloom's mother, Helen Bloom. Mitchel's family were founding members of Temple Emanu-El before they arrived at Fort Street. It was lovely to hear Mitchel reminisce about his youth during his time at Temple Emanu-El.

On February 16 the brief but meaningful Shabbat service followed by dinner attracted another fantastic showing of over 70 delighted participants. Each month, more congregants join in to experience this new format for the first time while many have made it a routine to catch up with friends. It has proven to be quality time for people to get to know each other better or to meet some new fellow members and friends.

Thank you also to Keli and David Levine who sponsored a special oneg on Friday, February 23 in memory

of David's mom Joan Levine. This is a generous and loving way to pay tribute on the occasion of loved ones' yahrzeit. It can also be a great way to celebrate other milestones like anniversaries and birthdays.

We are finally about to experience the fruits of the amazing collaboration between the members of our Bread and Torah Shabbaton planning committee. Please check out the fabulous itinerary for next weekend, when we welcome artists-in-residence Rabbi Jonathan Rubinstein, a master bread maker and baking teacher, and Rabbi Linda Motzkin, a Soferet (scribe), parchment maker and scribal artist, from Saratoga Springs, New York. Join us for as many of the activities as you can. Most of the programs are at no cost except for Shabbat dinner (\$20 per adult and \$12 per child, as usual) and a suggested donation of \$10 for the special Havdalah Israeli wine and local cheese Torah art talk.

So please RSVP as soon as possible because the deadlines to participate are super early this month. It promises to be a soulful, intellectually enriching, and gastronomically satisfying weekend!

See you at the festivities, **Armi**

Top Board of Trustees Highlights

- The Board of Trustees approved the Security Committee to spend up to \$5,500 of our Federal Security Grant to install 12 steel safety bollards at specific locations outside the Temple to establish a protective perimeter (designed to prevent vehicles from crashing into pedestrians and structures).
- The Membership Committee reported that 11 new member household units have joined our Temple to date since July 2023 and shared some ideas about how we might increase outreach to unaffiliated prospects.
- The Deli Day Committee shared that this year's event will take place on Sunday, June 2. The guest speaker is a Jewish folktales storyteller from Talking Hands Theatre, which performs for all ages (recently performed at the Yiddish Book Center). The Meyer Goodman fund is meant for events, but it needs more congregant support to help secure programs like this. Please consider donating to help replenish this fund.

Notes from Sherry Barnes



Be Happy it's Adar!! There is so much to be happy about in this upcoming month!

The Bread and Torah program on **March 8-10** is going to be amazing! I was able to sit in on my first meeting a few weeks ago and I was happy to see how much the

team planning this event had accomplished and how many wonderful things will be going on from Friday through Sunday. There really is something for all ages. From feeding our physical body with challah that we make ourselves, to feeding our soul with words of Torah. From the art and care of feeding the larger community to the solitude of the art of scribing the sacred letters and words of Torah. I'm sure it will be a fulfilling Artist in Residence with Rabbi Linda Motzkin and Rabbi Jonathan Rubenstein. Please make sure to read your bulletin and check the website for more information about RSVPing for this extra special event.

Please notice that our regular Shabbat Dinner is being moved to Friday, March 8, in conjunction with our Bread and Torah weekend. Make sure to **RSVP for the dinner by March 3**.

March 15, will be a regular 6:30, Shabbat Service. It will be led by Rabbi Emeritus, Aaron Rosenberg and me. Rabbi Marc will be away at the wedding of his oldest son Michael, and he will officiate! That's a lot of happiness!

What else is happy about the month of Adar? It's Purim!! We are so lucky to have Sam Winograd write our Purim Spiel this year. I know I'm looking forward to seeing it performed. We are also blessed to have Roz Etra leading music in between the spiel and community members entertaining us with the Megillah reading. It will be a fun evening. Guess I need to start thinking about a costume! Mark your calendar for **Saturday, March 23, at 7:00 pm.**

Thank you to Jeff Elkin for reading Torah on March 29.

There are dates still available in March, April, May, and June, if you are interested in chanting Torah.

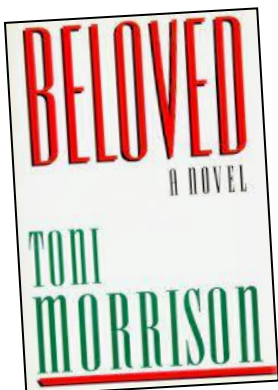
There is always something to make you smile, even if it is on the saddest of days. The happiness over a lifetime, friendships, or a memory of a moment in time. These are things we hold close and can always bring a smile. Look for the happiness of Adar.

B'shir, **Sherry**

Sisterhood -- Barbara Senges, President

Ladies,

February was a quiet month for Sisterhood. Thank you to Anne Cohn for hosting Book Club at her home in Niantic on February 20. There will be no Book Club in March. Our fifth Book Club of the year will be held on **Tuesday, April 2 at 6:30 PM at the home of Tammy in Old Lyme.** Tammy will be leading us in a discussion of "Beloved", a Pulitzer Prize winning novel by **Toni Morrison.**



"Beloved", written in 2007, is the story of Sethe, an escaped slave who is still shackled by memories of her murdered child. As the novel shifts between Sethe's brutal plantation days and her haunted life in Ohio 18 years later, the reader learns one secret after another until past and present are mas-

terfully reconciled. **If you are interested in joining us and being added to the Book Club Email list, please contact Suzanne Crawford at suzm.crawford@hotmail.com.**

Two upcoming Sisterhood events are highlighted with flyers in this month's bulletin. **On Tuesday, March 26 at 7:00PM at the Temple,** we will be learning the art of **decoupage** while performing an important mitzvah. (See page 6 for more information) Alaina Roberge from Alaina's Arts in Waterford will be guiding us through the decoupage of a vase. We will be donating these vases, filled with spring flowers to the **Friendly Visitor Program** as Passover gifts for the residents of local care facilities. The cost of the evening is \$15.

Please RSVP by Tuesday, March 19 to Moira Ross at moira29gross@hotmail.com.

CONTINUED ON PAGE 6

Sisterhood -- continued from page 5

On Thursday, April 18 at 6:00PM, we will be making our yearly visit to **Smith's Acres in Niantic. (See page 7 for more information)** Thank you to **Merrill Mazzella** for once again organizing this fun outing. This year we will be filling an oval planter with **herbs and pansies**. The cost for the planter is \$25. Sisterhood will be providing pizza and beverages. **Please RSVP to me at professeur38@me.com by Tuesday, April 16.**

In March and April, Sisterhood will be assisting with the assembly and distribution of holiday bags for the **Friendly Visitor Program**. **On Monday, March 18 at 10:00AM in the Social Hall** we will be putting together 120 Purim Bags. **On Monday, April 15 same time, same location** we will be assembling **Passover Bags**. **If you are able to assist with this Mitzvah Project please email Eileen Shapiro at esfinallyhase-mail@comcast.net.**

Finally, I have a few updates on upcoming events announced in the February bulletin. The **"Cook with Rabbi Marc"** event previously scheduled for **March 14** has been canceled.

Our End-of-Year-Dinner scheduled for Thursday, May 30 at 6:00PM, will be held in the Temple Social Hall and will be catered by "Cloud Nine Catering".

Twenty seats have been reserved at **Goodspeed Opera House** for a matinee performance of **"South Pacific"** on **Wednesday, June 26 at 2:00PM**. We will have lunch

at the Gelston House at 12:00PM prior to the performance. **At this point, there are two tickets still available for the performance. If you are interested, email me at professeur38@me.com.**

Happy Purim! Barbara

Temple Emanu-El Gift Shop

Hello Everyone,

As I write this on February 16 outside the window of my office the wind is howling. I'm busy looking for items to order for the gift shop for Passover. . . And that means Spring. I can hardly wait.

On Sunday morning, March 10, the gift shop will be open for business! Please come by if you can to get great prices on our leftover Chanukah items. We will also be open on April 7.

You can also reach me at 860-508-6084 any time for an appointment.

If you watched the Super Bowl you may have seen advertisements for **"Stand Up To Jewish**

Hate". As you can see in the photo you can wear a pin that is subtle but may invite inquiries. I have ordered 10 pins and will have them for available donation in the gift shop.



Thank you, **Anne**

Join Temple Emanu-El Sisterhood to **Learn Decoupage & do a mitzvah!**

**On Tuesday, March 26, from 7 – 8:30 pm at the Temple,
we will be learning the art of decoupage.**

Alaina Roberge from Alaina's Arts in Waterford will be guiding us through the decoupage of a vase.

We will be donating these vases, filled with spring flowers to the Friendly Visitor Program as Passover gifts for the residents of local care facilities.

The cost for the program is \$15 per person.

Please **RSVP** to Moira Ross at moira29ross@hotmail.com by Tuesday, March 19.

We need a minimum of 15 people to run this program.

SPRING MAHJONGG TOURNAMENT 5/15/2024

Save the date for our next Mah-jongg tournament on Wednesday, May 15, 2024.

We will again offer relaxed tables (for newer players and those that may not want to play a full day), as well as 6 round tournament play.

Breakfast, lunch, and snacks will be included along with cash prizes for our high scorers.

Temple Emanu-El Religious School (TERS) - Lisa Marcus, Administrator

As I sit here watching the snow fall, it isn't lost on me that when you read this you will likely be thinking about spring and all things green. March is an exciting month to look forward to in general, but also at TERS!

Firstly, we hope you and your entire family will join us for Share Shabbat on March 1 with a very special 'Girl Scout Cookie Oneg' sponsored by Casey Ryan's Grandfather. Many thanks to him!

Parents, please consider participating in the TERS portion of our Bread and Torah Artist in Residency programming which will take place on March 10 from 9:30-12:00. Parents are not only invited to participate, but they are strongly encouraged to do so. As I am writing this, the committee is working feverishly to firm up the details, so please watch the school bulletin board for schedules and updates. We want this to be a family bonding experience, so please mark your calendars!

March 24 is Purim, and what a celebration it will be! We

are looking for parent volunteers to lend a helping hand preparing for, setting up, helping, and cleaning up before, during, and after this exciting event. If you could contribute some time to before, during, or after this special programming, it would be greatly appreciated. Please reach out to me or Amy Orce at your earliest convenience if you can help out for an hour or so. It doesn't have to be for the entire morning, although that would be great, too.

And...as if that was not enough excitement for one month, we are trying to squeeze in a Sunday Family Funday (TBD). If YOU have an idea of an event you might like to host, please reach out to my, Amy Orce, or Jennifer Zettler...and keep your ears and eyes open for information about this event, too.


Like I said last month, it may be cold outside, but things are always heating up here at TERS!

Shalom, **Miss Lisa**

Social Action — Karen Bloustine, Chair

We are in the process of planning for Mitzvah Day in the spring. This is an opportunity for students in the religious school and their parents as well as other congregants. Often one task is to update the landscape around your building. In the past we also did some specific "chores" involving cleaning around the building that may be overlooked in every day cleaning. Contact **Karen Bloustine:**

bloustinek@gmail.com 860-326-6377 to volunteer to help.





Erev Purim, Saturday, March 23

**Celebrate with the community at
Temple Emanu-El
as we recall our being saved from the evil forces
of Haman by Mordechai and Esther.**

**7:00 P.M. Vashti's Harem House: A Short Participatory Purim Spiel
in Three Acts**

**Followed by Havdalah, Hamantaschen and
the Full Megillah Reading**



Service & Event Schedule

Fri.	March 1		Entry Deadline to Submit Howard Ilson Award Nominations
		6:30 P.M.	Share Shabbat
Sun.	March 3		R.S.V.P. Deadline for March 8 Shabbat Dinner
		9:30 A.M.	Religious School and Preschool
Mon.	March 4	12:00 P.M.	Jewish Federation Senior Lunch
		6:00 P.M.	Jewish Community High School
Wed.	March 6	1:00 P.M.	Drop-in Mah Jongg Circle
		2:00 P.M.	Writers Circle
		4:30 P.M.	Religious School

PLEASE R.S.V.P. for following weekend events – See flyer in this bulletin (p 1-2)

Fri.	March 8	1:00 P.M.	Challah and Bagel making with Rabbi Jonathan
		6:00 P.M.	Shabbat Service
			Intro to Bread and Torah by Rabbi Jonathan and Rabbi Linda
		6:30 P.M.	Shabbat Dinner
Sat.	March 9	10:00 A.M.	Shabbat Morning Service at Novick Residence
			D'var Torah during the service by Rabbi Jonathan
		7:00 P.M.	Havdalah, with Israeli wine and local farm cheese, and Torah Art Talk with Rabbi Linda
Sun.	March 10	9:30 A.M.	Religious School and Preschool
			Special Program open to the entire congregation
			Rabbi Linda will provide a "Torah show-and-tell" and hide stretch session. Rabbi Jonathan will be leading challah making
Mon.	March 11	12:00 P.M.	Jewish Federation Senior Lunch
		6:00 P.M.	Jewish Community High School
Wed.	March 13	4:30 P.M.	Religious School
		7:30 P.M.	Board of Trustees Meeting
Fri.	March 15		Deadline to order Mishloach Manot Purim Bags
		6:30 P.M.	Kabbalat Shabbat Service
Sun.	March 17	9:30 A.M.	Religious School and Preschool
Mon.	March 18	10:00 A.M.	Friendly Visitor Bag Assembly
		12:00 P.M.	Jewish Federation Senior Lunch
		6:00 P.M.	Jewish Community High School
Tues.	March 19	10:00 A.M.	Purim Mishloach Manot Bag Assembly
Wed.	March 20	1:00 P.M.	Drop-in Mah Jongg Circle
		4:30 P.M.	Religious School
Fri.	March 22	7:30 P.M.	Kabbalat Shabbat Service
Sat.	March 23	7:00 P.M.	Erev Purim Celebration – Vashti's Harem House: A Short Participatory Purim Spiel in Three Acts, Havdalah, Hamantaschen and full Megillah Reading
Sun.	March 24	9:30 A.M.	Religious School and Preschool Purim Celebration
Mon.	March 25	12:00 P.M.	Jewish Federation Senior Lunch
		6:00 P.M.	Jewish Community High School
Tues.	March 26	7:00 P.M.	Sisterhood Decoupage Vase –at Temple Emanu-El
Wed.	March 27	4:30 P.M.	Religious School
Fri.	March 29	6:30 P.M.	Kabbalat Shabbat Service
Sun.	March 31	2:00 P.M.	Federation Film Festival –at Beth Jacob
Mon.	April 15		RSVP Deadline for the Passover Seder on April 22

March Birthdays

Doug Barnes
Minerva Beard
Jennifer Beatty
Anne Bendick
Jordan Bentley
Stanley A. Bloustine
Tracy Colsen Schaperow
Heidi Cordray
April D'Amato
Debra Eichler Elliott

Janet Garson
Daniel Goldstein
Ellen Gottfried
Geoff Hausmann
Rebecca Haynes
Spencer Haynes
Joel Holwitt
Alexandra Holwitt
Joshua Johnson
Regan Kaye
Martin Lazarus
Kaylyn Levine
Steven Lewellyn
Jeremy Linden
Todd Linden

Erica McCaffrey
Benjamin Miller
Ryan Novick
Chris Rock
Ellen Schiller
Paige Schneider
Lindsay Schneider
Stephanie Seeman
David Senges-Murphy
John Patrick Silsby
Harvey Snitkin
John Stavropoulos
Amy Stricker
Sheldon Stricker

Stephanie Thorp
Margaret Trehub
Lauren Trostler
Gail Weber
Shoshanna Weiss
Hannah Winograd



Anniversaries

*I found the one
my heart loves...*
Song of Songs 3:4

Jeffrey P. Elkin and
Jean Lasser

Mark and Dianne
Rubin



Yahrzeits

March 1

Benjamin Angert
Joseph Bloustine
Irwin Braverman
Louis Brensilver
Iona Fridman
Terri Goldsmith
Howard Helveston
Louis Kleinbaum
Alex Lazarus
Harold Margolis

Nathan Novar
Gail Piotrkowski
Irwin Sayet
Sidney Shanbrom
Leon Speevak
Phyllis Weiss
Priscilla Young
Julia Barnett
Audrey Cohen

March 8

Ruth Doukas
Harry Eidensohn
Albert Engel
Morse Engelman
Charlotte Fox
Howard Franklin
Fuzzy Gipstein
Sarah N. Herbert
Morris Krammer
Ruth Lasser
Miriam Massman
Selma Misch
Charles Reisner
Marian Senges
Walter Senges
Claudia Shapiro
Joseph Shapiro
Bernard Simon
Louis Trostler

Melvin Zablotsky
Louis Zeldis

March 15

Gerald Baker
Lou Freeman
Marilyn Freeman
Esther Goodstein
Bethany Hillsberg
Risa Hillsberg
Nathan Hytone
Ruth Kilbey
Stella Murphy
Ray Brooks Prokesch
Irving Ressler
Marvin Rovner
Louis Schlissel
Mary Schnader
John Shiers
Harold Stein
Sylvia Zeldis

March 22

Sheppard Fox
Philip Goldblatt
Josephine Hovey
Benjamin Linden
George Mettler
George Mikulka
Cookie Parry

Florence Rosenstein
Stanley Sedransk
Rose Shedroff
Barbara Sherman
Marlene Simon
Sol Solomon
Anne Steinman
Rose Pearlman Tulman
Corrinne Willins

March 29

Suzanne Bloom
Bessie Brody
Pauline Frank
Henry Green
Harvey Krasney
Benjamin Lazev
Jean Morea
Dr. Samuel David
Schupack
Jerome Schwartz
Zermina Senges
Florence Shafner
Allen Shedroff
Mary Shleffar
Harry Stoner
Deeda Wharton

May their memory be a blessing.
יהי זכרם ברוך.

We are eternally thankful for the support of those below

Building Support Fund

Adam Kaufman and Rebecca Woodward
---in memory of Phyllis Kaufman on her yahrzeit

Cantor's Fund

Bart A. Sayet and Lori Lindfors
---in loving memory of Irwin Sayet on his yahrzeit

Essential Services Fund

Patricia Hendel
Adam Kaufman and Rebecca Woodward
---in memory of Phyllis Kaufman on her yahrzeit
Anita Miller
---wishing good health for Rachel Barclay
David and Keli Levine
---in memory of Jules Levine on his yahrzeit
Donald and Lois Steinman
---in honor of Joyce Zion's special 95th birthday, loving mother of Gail Weber
---wishing Hali Keeler a speedy recovery
Henry M. Dunkerley Jr.
---in loving memory of Ruth Dunkerley on her yahrzeit
Ian and Suzanne Crawford
---in loving memory of Vera Crawford on her yahrzeit
Irma Flitt
---in memory of Bessie Snitman on her yahrzeit
Martin and Joanna Lazarus
---in loving memory of David Hillsberg on his yahrzeit
---in loving memory of Dorothy Benmaor on her yahrzeit
---in loving memory of Lillian Miller on her yahrzeit
---in loving memory of Priscilla Young on her yahrzeit
---in loving memory of Alex Lazarus on his yahrzeit
Marvin and Jane Schnur
---in loving memory of Norman Schnur on his yahrzeit
Shelley and Nathan Weiss
---in memory of Merton Goldstein on the occasion his yahrzeit

Lothar Knobel Library Fund

Adam Kaufman and Rebecca Woodward
---in memory of Phyllis Kaufman on her yahrzeit

Mitzvah Fund

Edith R. Ziegler
---in loving memory of Sigmund Sol Rosenholtz on his yahrzeit
Mark and Alexandra Rosenthal
---in appreciation for Myra Gipstein

Oneg Fund

David and Keli Levine
---in memory of Joan M. Levine on her yahrzeit

Rabbi Aaron Rosenberg Tikkun Olam Scholarship Award Fund

Mitchel Bloom from the children of Helen & Donald Bloom
---mazel tov to Aaron and Karen Rosenberg on their 55th wedding anniversary

Rabbi's Discretionary Fund

Adam Kaufman and Rebecca Woodward
---in memory of Phyllis Kaufman on her yahrzeit
April D'Amato
---in loving memory of Jeffrey D'Amato on his yahrzeit
Barry and Stephanie Thorp
---in loving memory of Philip Crystal on his yahrzeit
David and Keli Levine
---in honor of our children and grandchildren
Susan Diaz
---in memory of Susan Marla Wickes

Religious School

Florence & Raphael Shafner Charitable Fund II
Community Foundation of Eastern Connecticut

Ruth Joan Brody Religious School Fund

David and Keli Levine
---in honor of our children and grandchildren



Condolences to...

Kenneth Abrahms

on the passing of his sister,

Karen Schwartz

May their memory be a blessing.
יהי זכרם ברוך.

Please make checks payable to Temple Emanu-El and remit to PO Box 288, Waterford, CT 06385

Temple Emanu-El 65th Anniversary Directory

Temple Emanu-El is putting together a new *printed* congregational directory for our current & future members!

It will include updated membership contact information, professional photography, and celebratory ads and messages. Congratulate our Temple on 65 years!

Recognize people, send a card, or give someone a call.

Join our directory to help make Temple Emanu-El a vibrant, close-knit community.

Please fill out the front & back of this form and submit it via mail or e-mail:

Temple Emanu-El Directory • P.O. Box 288 • Waterford, CT 06385

Or communications@tewaterford.org • Subject: Temple Directory

Names of Family Members (one per line, check box if an adult):

☐☐☐☐☐☐☐☐

Primary Phone Number: _____

E-mail: _____

Mailing Address: _____



☐ Check if you do not want your address included in directory. Phone and email will be included.

Please note this directory will only be printed, it will not be available or distributed digitally.

*Photo of Directory from
50th Anniversary*

**To have a free professional photo featured in the directory,
please circle *one* of the following photo session dates:**

Sunday, April 14th,
11:30 AM – 2:00 PM

Sunday, April 21st,
12:00 – 2:30 PM

Sunday, April 28th,
11:30 AM – 2:00 PM

Wednesday, April 17th,
4:00 PM – 6:30 PM

I cannot make any of
these. Please contact me.

A photo for the directory is free. If you would like a printed photo or photo package, you can choose one at the time of photography. Pricing ranges from \$18 – \$36 and payment by cash or check is due at time of photo session.

**Photo packages and ad purchases help cover the cost of printing the directory.
Want to have a personal message featured in the directory?**

See next page for more information.

Full Page Size:
7.5" w by 10" h

Temple Directory Personal Message Submission Form

Please note there is a different ad form for businesses.
Please contact the Temple office if you would like the form for a business ad.

Please *print* your message here:

Half Page Size:
7.5" w by 4.875" h

Please choose an ad size:

- ☐ **Full Page** (7.5" w x 10" h)
\$180
- ☐ **Half Page** (7.5" w x 4.875" h)
\$100
- ☐ **Quarter Page** (3.625" w x .875" h)
\$60
- ☐ **Eighth Page** (3.625" w x 2.312" h)
\$36
- ☐ **Include a Photo**
\$15

Quarter Page Size:
3.625" w by 4.875"

Eighth Page Size:
3.625" w by 2.312"



**FOR ALL YOUR
REAL ESTATE NEEDS**

Direct: 860-443-4400 Cell: 860-625-5255
Email: Geoff@CallTheHouseMan.com
Website: www.CallTheHouseman.com
Blog: CTHouseMan.com

YOUR AD COULD BE HERE!
CONTACT ROBERTA AT
860-443-3005
TO PLACE YOUR AD
IN THE FEBRUARY BULLETIN

PsychologyCT.com

Schaperow Psychology & Associates:

Thorough diagnostic assessments: psychological
testing; individual, group, marital, & family therapy

Drug & Alcohol Treatment:

Clinicians that specialize in drug & alcohol treatment.

And:

Cognitive Behavioral Therapy (CBT) Center:

Evidence-based CBT to improve mental health, and
decrease stress for certain physical illnesses.

860-447-2047 / PsychologyCenterOffice@gmail.com

Why rent offices when you can own?

***Owning is almost always far better, so
spread the word!***

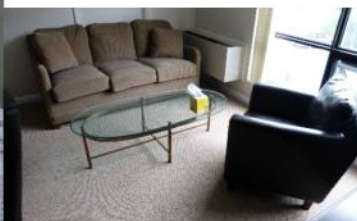
The Schaperows are selling a portion of their
Waterford Professional Complex condos.

Email PsychologyCenterOffice@gmail.com,
or call/text 8602715233 to inquire.

If you know anyone who's leasing, please let
them know of this tremendous opportunity and
forward them our contact info.

Psychology CT LLC is **seeking renters**, as we have **beautiful offices available** in
Waterford. These offices are perfect for professionals (e.g., therapists, massage
therapists, small practice attorneys & accountants, certain kinds of physicians,
etc.), especially those that don't need a reception area, but may still benefit from
a waiting area. Please see

<https://sites.google.com/site/schaperowpsychology/office> for details, or email
psychologycenteroffice@gmail.com for more information.





Mishloach Manot Purim Bags

Purim is a time to celebrate our story of Esther. She was a heroine who allowed us to live during a time when Haman threatened our existence. Be happy! Celebrate with a Purim tradition of giving goodies to your friends. Participate in Temple Emanu-El's Mishloach Manot Fundraiser.



Mishloach Manot Bags will be delivered to your door by temple volunteers.

Each bag will contain Purim goodies and delicious hamantaschen.

✂ Name: _____

Address for delivery: _____

Phone: _____

Enclosed is my donation (check one):

_____ \$180 to send a Mishloach Manot Bag to every congregant

_____ \$18 to send a Mishloach Manot Bag to myself

Please make checks payable to Temple Emanu-El.

Send this completed order form with payment by March 15, 2024 to:

Temple Emanu-El
PO Box 288
Waterford, CT 06385

If you prefer to pay by credit card please go to <http://www.tewaterford.org> , click on Donate button, and select "Purim Mishloach Manot Fundraiser" on the donation page.



WATERFORD, CT

Temple Emanu-El Seder 5784

Monday, April 22, 2024

6:00 pm

at Temple Emanu-El

29 Dayton Road

Waterford, CT 06385

Menu:

Matzo ball soup

Gefilte fish with horseradish

Spring Salad with field greens, asparagus, peas, radishes
and citrus vinaigrette

Smokey lemon glazed chicken

Roasted thin sliced rosemary red potatoes

Tzimmes – {vegan} Roasted spiced sweet potatoes
and other root veggies with prunes

Vegan/Gluten Free Option: Stuffed Portabella Mushroom

RSVP for Passover Seder by April 15th

Name(s): _____

Phone: _____ E-mail: _____

Number attending: _____ at \$40 per Adult, _____ at \$20 per Child, ages 6–12,

_____ Age 5 & under free **Total Enclosed:** _____

Number of vegan or vegetarian meals: _____

Seating will be pre-arranged. Please include requests for guests at your table. Dinner will be buffet style.

Return this form with payment to: Temple Emanu-El • PO Box 288 • Waterford, CT 06385

If you prefer to pay by credit card, please go to <http://www.tewaterford.org>, click the Donate button,
and select "Passover Seder 2024" under Choose A Fund on the donation page.

Questions? Call Roberta: 860-443-3005

BUILDING A VIBRANT COMMUNITY THROUGH REFORM JUDAISM

TEMPLE EMANU-EL
PO BOX 288
WATERFORD, CT 06385

Please use PO BOX 288 WATERFORD, CT 06385
when mailing material to the temple

Non-Profit
Organization
U.S. Postage PAID
New London, CT
06320
Permit #480

Deadline for April 2024 Bulletin is Friday, March 15

Email your articles to Roberta at office@tewaterford.org

CHANGE SERVICE REQUESTED

Our Leadership

Rabbi / Marc Ekstrand / rabbi@tewaterford.org
Rabbi Emeritus / Aaron Rosenberg / arloveskr@aol.com
Cantorial Soloist / Sherry Barnes /
cantorialsoloist@tewaterford.org
President / Armi Rowe / president@tewaterford.org
1st Vice President / Open
VP of Religious Practices / Claire Warren
Treasurer / John Murphy / treasurer@tewaterford.org
Vice Treasurer / Bruce Goldstein
Recording Secretary / Jo Michaelson
Corresponding Secretary / Robbin Alpert
Immediate Past President / Andy Parad
pastpresident@tewaterford.org
3 Year Trustees: Sheri Pascal, Emma Zelken, Rachel O'Brien,
Ian Crawford
2 Year Trustees: Marcia Reinhard, Sue Fornara, Scott Zettler,
Jennifer Zettler
1 Year Trustees: Michael Barnett, Jonathan Rowe, Janine Sitko,
Shoshanna Weiss
Security Committee Chair / Rich McCaffrey
Social Action Co-Chairs / Karen Bloustine

Membership Chair / Emma Zelkin
Sisterhood / Barbara Senges/ sisterhood@tewaterford.org
Gift Shop / Anne Cohn / judaicashop@tewaterford.org
Brotherhood / Open / brotherhood@tewaterford.org
Kitchen Committee Chair / Erica McCaffrey
Building and Grounds / Bruce Goldstein
Religious School Committee Chair / Jennifer Zettler
Religious School Administrator / Lisa DeVito Marcus/
religiousschool@tewaterford.org
Library / Sheri Pascal
Communications Committee Chair: Sue Fornara
Office Administrator / Roberta Reisner-Winograd /
office@tewaterford.org
Webmaster / Aaron Kaplan / webmaster2@tewaterford.org
Custodian / Don Kasper
Bulletin Editor / Mimi Perl
Temple Location: 29 Dayton Road, Waterford, CT 06385
Temple Mailing Address: PO Box 288, Waterford, CT 06385
Office: 860-443-3005
Religious School: 860-443-3005
Website: www.tewaterford.org