

TEMPLE
EMANU-EL



Bulletin

SEPTEMBER 2024
AV-ELUL 5784



Let's Catch Up at Temple Emanu-El's Farmer's Market Open House

Sunday, September 8, 2024
10:00 am - 2:00 pm
29 Dayton Road, Waterford, CT



- Religious School Registration 
- Temple Emanu-El Committee Tables 
- Baking Club's Savory & Sweet Treats 
- Live Music 
- Building Tours 
- Outdoor Fun 
- Judaica Gift Shop 
- Food Trucks 

Building A Vibrant Community.

Rabbi's Message — Marc Ekstrand

Friends,

Summer feels like it is beginning to fade away. Children are heading back to school, students are heading back to college, sailors are thinking about preparing boats for the winter, and gardeners are bringing in those last summer vegetables. But as one season ends, another begins, and there is much to look forward to.

September 8 will be the first day of Religious School AND the Temple Emanu-El Farmer's Market Open House. Whether you are a new member or have been part of our community for many years, you will want to come. Just as the seasons change, TE changes also. Come catch up with old friends and meet new ones, enjoy music and food, support our local farmers, crafters, the Sisterhood Gift Shop, find out what is happening at Temple for you, and maybe even join a committee. Thank you to Emma Zelken and many others for making the Open House a new annual Fall tradition at Temple Emanu-El.

Lisa Marcus and the Religious School teachers and staff have been working hard to prepare for an exciting new year. We have two big changes with religious school this year. First, we are rearranging our Sunday mornings. Several years ago, we added a weekday morning learner's service called T'fila Time to our Sunday morning Religious School programming. This 25-minute service is learning Judaism by doing Judaism. In the classroom students learn words, prayers, and ideas that are foundational to Judaism; in T'fila Time, students experience Jewish religious practice. This year we will be moving T'fila Time to the beginning of our Sunday at 9:30 AM. We are strongly suggesting that student's family members join us. Judaism can't thrive and be sustained if it is confined to just young students in classrooms. Judaism needs the nurturing of families and community to be healthy. After T'fila Time, we hope parents and others will stick around

and build their own community circles over healthy snacks, bagels and coffee. Again, everyone in our TE Community, but especially our Religious School families, are invited to be part of our Sunday morning T'fila Time at 9:30 AM. We will also conclude our Sunday mornings with Havdalah at 11:50 AM. Parents and guardians are welcome to join us for Havdalah and pick up their students in the Social Hall.

The second big change to our religious school is Kadima (pronounced Ka-DEE-ma), a new program for high school students. The seeds for Kadima have grown out of discussions with our teens, who are now entering high school, and their families. In Kadima, our students will build an individual and mature sense of Jewish identity, meaning, purpose, and interconnectedness by exploring and putting core values into action. Teens will meet before religious school for a spirituality group led by Rabbi Polly and myself, followed by volunteering in our religious school. On select Sundays after religious school, teens will have lunch and learn while planning or doing social action or social justice projects. Kadima will also go on several trips to spots of Jewish importance and travel to Washington, DC, for the February Religious Action Center L'taken Seminar. The Kadima program will be facilitated by myself and a new face in our community, Libbie Duskin. If you are a parent and have questions about Kadima, please contact me ASAP.

In this article, I have focused primarily on new happenings in the religious school. However, the vibrancy at Temple Emanu-El is spread throughout our entire community. If you are new to TE, have just been away for a while, or maybe just want to get involved in new things, make a point to come to our Open House on September 8. I'll see you there.

L'Shana Tovah,

Rabbi Marc

President's Message - Armi Rowe

Welcome back from your summer vacations, stay-cations, family reunions, and restful sojourns! I am grateful for our Temple leadership who started the new fiscal year with zest. We are blessed to have a full, diverse, and highly motivated team of Board members.

We met twice in July, for regular Temple business at the first meeting and then a special Board retreat to focus on annual goals planning. We reflected on the past year's successes and identified what was not

CONTINUED ON PAGE 3

President's Message - Armi Rowe—continued from page 2

working, what we could improve, and what innovations we could pursue this year. In August we met again for regular business, and to analyze our collective inputs, so we can clearly define this year's priorities. This month, we will set measurable objectives and strategies, identify timing and resources, and get to it.

I very much appreciate the tireless efforts of Hazzan Sherry and our lay leaders, their prayer readers, and service participants who led Shabbat throughout the summer. Many thanks to all of you for your devotion to Torah, prayer, and our community. We are so fortunate to have generous congregants who give their time and energy to our Temple life. I personally enjoyed hearing the variety of voices and listening to creative and meaningful D'Var Torah sermons. It was a special treat to attend the special outdoor Shabbat led by Rabbi Marc and Hazzan Sherry at Bluff Point State Park. Thank you to the Religious Practices Committee for planning the delicious breakfast picnic and spiritual walk.

As we approach the High Holidays season, September will be a time for us to once again gather for religious school, adult education, and the many activities we enjoy in the Temple building, such as our monthly Shabbat Dinners on the third Friday of each month, baking club sessions, the mahjonn and writers circles, and upcoming fall events like the Temple's Farmers Market and Open House on Sunday September 8.

I look forward to hearing about your summer adventures!

See you soon,

Armi

Board Meeting Highlights

These are highlights from our June and July Board meetings and recent Board activities:

Deli Day event fundraiser raised \$1,900.

The reserve fund increased by \$30,000 due to reimbursement of the security grant from the government.

Board approved renovation of women's restroom handicapped stall to convert it into a multi-purpose handicapped compliant bathroom. One third of estimated cost will come from Building use fund, one third will be donated by Sisterhood, and one third will come from donations. Construction has begun.

Board approved \$1,900 from Building Fund for a service to paint the two-story school atrium (due to safety concerns) in preparation for installation of a digital media screen (no cost to Temple—will be donated) that will modernize display of confirmation portraits, donor recognition, and event announcements. Thank you to Building and Grounds committee volunteers who painted the social hall entrance to save the Temple money.

Ad hoc committee was formed to investigate how best to develop a Temple Ethics Policy.

All members of Temple committees who regularly volunteer in the kitchen at Shabbat or Temple events need to attend a special kitchen Serve Safe training to be led by Dona Casey on Tuesday, September 17 at 6:30 p.m. due to new kitchen procedures required by Ledge Light Health District.

Notes from Sherry Barnes

Welcome back from vacations and summer fun!

Today is a spectacular day! Even though it is almost the end of August, today feels like September weather. You can feel there is change in the air. The choir and I are rehearsing High Holy Day music, Jose will be sounding the shofar to "wake us up" metaphorically, and we have invited Victor Johnson back to engage

our hearts and souls as he plays Kol Nidre on cello. Sam Winograd, our Religious Practices Chair, is putting out the call for you to choose from selected parts and participate in services for Rosh HaShanah and Yom Kippur. Make sure to read Sam's bulletin article and reply. We love when you are involved.

CONTINUED ON PAGE 4

Notes from Sherry Barnes — continued from page 3

Classes will begin again **the week of September 9**. This year I will be offering a Beginning Hebrew Class. Here is the lineup:

Tuesdays at 11:00	Prayer book Hebrew	on going class
	Need to know how to read Hebrew & know some Hebrew Grammar	
Wednesdays at 10:00	Trope Class	on going class
	Reviewing Torah Trope Need to be able to read Hebrew	
Wednesdays at 11:00	Intermediate Hebrew	on going class
	Need to know how to read Hebrew and some Hebrew Vocabulary	
Thursdays at 11:00	Translating Torah Class on going class	
	Need to know how to read Hebrew and some Hebrew Vocabulary	
Thursdays at 12:00	Beginning Hebrew	New Class
	No prerequisite	

You are welcome to come and try any class that is an “ongoing class”. Please contact me by email: shirie3860@aol.com and let me know which class/classes that you are interested in.

Classes may be interrupted in October; due to the way the Holidays are falling.

A very big thank you to all of you who led Shabbat Summer Services! I appreciated all the thoughtfulness, and time you put in to make your service meaningful and inclusive.

Thank you to those who read Torah, wrote a D’var Torah, participated in various ways, and attended the lay-led Shabbat Services.

Looking forward to seeing you at Shabbat and High Holy Day Services. May the New Year be a sweet and meaningful one.

Shanah tova u’mitukah,

Hazzan Sherry

Religious Practices

My fellow Temple Emanu-El congregants,

As this long, hot summer comes to a close, it is nice to know that fall is fast approaching. From late summer to early fall, we begin the festival season with introspective services during the month of Elul. During Elul we engage with directed soul searching and reconciling our differences with our family, friends and associates. This culminates in the Days of Awe: Rosh Hashanah and Yom Kippur. These two sacred days are quickly followed by the joyous holidays of Sukkot and Simchat Torah. We have great plans for these holidays.

One of our many Temple traditions is to have congregants participate in speaking and non-speaking parts during the Rosh Hashanah and Yom Kippur services. In the past, we have used many approaches to select participants for these honors. This year, we are asking you

to volunteer if you would like to participate in the following services:

- Wednesday October 2, 2024 @ 8:00 p.m. – Erev Rosh Hashanah
- Thursday October 3, 2024 @ 10:00 a.m. – Rosh Hashanah
- Friday October 11, 2024 @ 8:00 p.m. – Erev Yom Kippur
- Saturday October 12, 2024 @ 10:00 a.m. – Yom Kippur Morning
- Saturday October 12, 2024 @ 5:00 p.m. – Yom Kippur Neilah

If you are interested in having the honor of participating in any of these services, please contact Sam Winoograd by either email or phone. Let me know if you are comfortable reading or singing Hebrew or English, can

CONTINUED ON PAGE 5

Religious Practices—continued from page 4

chant Torah or Haftarah, or want any of the non-speaking parts, including blowing shofar. To give the religious practices committee time to prepare, please let me know by **August 31, 2024** how you would like to participate via either email or by calling me.

On another note: Are you interested in helping to shape the Temple's Religious Practices or bringing Life Long Learning opportunities to our community? Why not join the Temple Emanu-El Religious Practices/Adult Education committee. We meet the first Wednesday of every month at 7:30 p.m. Bring your ideas and willingness to help bringing services and events to fruition.

You don't need to commit for the full year, if you have an event that is particularly meaningful for you, join us to support that event. Help is always needed and appreciated.

L'Shalom,

Sam (Shmuel) Winograd

VP, Religious Practices and Adult Education

swinograd@comcast.net

860-204-1421

(Please feel free to leave me a message if I don't answer)

Temple Emanu-El Religious School (TERS) - Lisa Marcus, Administrator

And so, summer begins to come to a close, but not before we can all meet again in community at our upcoming Fall Open House on September 8, which just so happens to fall on the first day of school this year. This is by design so that we might bring our people together, forge stronger relationships and generate excitement about a very new year ahead.

Once again, change abounds at TERS, and I think you will all see the programming changes as amazing opportunities for our families to connect over the coming year. For example, we will begin each Sunday program in the sanctuary with family T'filah Time. This is a time for parents, grandparents, guardians and other family members to join students in community to begin the day. Then we offer a second community experience with a quick spiritual Havdalah at dismissal. I cannot think of a more meaningful way to begin and end our Sundays than together in community. Thank you, Rabbi Marc, for the vision it took to foresee such a holistic framework for our days.

Rabbi Marc is also introducing another special program entitled Kadima, which will truly inspire and foster a sense of community for our high school students. Please refer to Rabbi Marc's bulletin article to learn about this groundbreaking opportunity for our youth.

You will see some new faces around the school this fall. Meet and greet our new staff with the excitement and enthusiasm they deserve! Introduce yourself and offer to be a resource.

Lastly, our class format is changing a bit. You will now see Pre-Gan joined with Gan, taught by Miss Elena.



Alef will be joined with Bet, taught by Miss Violet. The older grades will be taught individually, also by a wonderful line-up of teachers. I couldn't be more excited about the collaborations we have in store for your students.

In even more interesting news, our older students will be beginning the new year with a field trip to the GERDA III at Mystic Seaport to learn about how Jews were rescued during WWII. (Many thanks to the Bentley Fund for supporting this venture!) A fitting way to kick off the new year, in my opinion. Keep your eye out for a letter coming in the mail with details.

We have so many new opportunities this year for your students, but that means we also need many helping hands to make these changes and experiences happen seamlessly. I implore each of you to strongly consider joining the Religious School Committee this fall. It is one hour a month and involves helping with special programming during holidays. Myself, Jennifer Zettler and Rabbi Marc will be reaching out to parents, because we cannot have a vibrant community without everyone's help. We have a lot to accomplish this year. Please join us in making it all happen!

I very much look forward to seeing each of you at school at the Open House and establishing closer connections to one another in September and throughout the year. I see the possibilities of connections as endless.

Shalom,

Miss Lisa



**PRE-ORDER YOUR ROSH HASHANAH CHALLAH
BY SEPTEMBER 29**

Round Challah Bake Sale

**Just in time for the High Holidays!
Fresh baked by Temple Emanu-El's Baking Club
\$10.00 each**

**Proceeds will go toward Oneg Fund for ingredients Baking Club needs
to prepare baked goods for monthly Shabbat onegs all year long.**

To pre-order your Round Challah:

- Email rmccaffrey@snet.net to indicate # of regular or raisin round challah loaves
- Bring payment to pick-up (checks to Temple Emanu-El & write "Round Challah/Oneg Fund" in the memo) or pre-pay online through Temple website at www.tewaterford.org (see flyer posted on Happenings)
- Pick up your challah order from Temple Social Hall on Tuesday, Oct 1 anytime between 5:00-7:00pm

Sisterhood -- Barbara Senges, President

Ladies,

Happy New Year! As I begin my third year as Sisterhood President, I am so very proud of the Sisterhood Board, all we accomplished last year and all we are planning to accomplish in 2024-2025. Our ranks continue to grow with first-time members, and our range of activities is expanding.

There have been some significant changes in the Sisterhood Board this year. Some old faces with new positions, and three new faces. **Jennifer Zettler** is now our Treasurer and **Nancy Trostler** has joined the Board to replace her as Membership Chair. **Linda Barnett**, another new addition, will be in charge of planning our Kickoff Event and End of Year Dinner. **Sue Rosen** has become a Sisterhood Board member to assist me and Sue Fornara with communication and publicity. **Eileen Shapiro** has traded her Treasurer position to organize a monthly **Movie Club**. Welcome and thank you to our new members. To our returning members, **Sue Fornara, Debra Wool, Anne Cohn, Moira Ross, Gail Schor, Suzanne Crawford, Jennifer Zettler and Eileen Shapiro**, thank you for your continuing, dedicated service to Sisterhood.

I want to start with a thank you to **Anne Cohn** for hosting our Sisterhood Yearly Planning Meeting at her home in Niantic. The Board enjoyed a delicious lunch and spent over three hours planning our activities for the coming year and assembling membership letters, which you should be receiving very shortly, together with several coming event flyers (See flyers in this bulletin).

Moira Ross, Social Justice Chair has organized a **Get Out the Vote Postcard Event for Wednesday, September 18 from 4-7 PM at the synagogue**. Please RSVP to **Moira by Wednesday, September 11 at moira29gross@hotmail.com or call 860-341-1129**.

The Membership Kick-Off Event will be held on **Tuesday, September 24 at 6:00PM in the Social Hall at Temple Emanu-El**. The evening will include a catered buffet and the opportunity to get to know more about your "Sisters"! Please RSVP to me by **Sunday, September 15 at professeur38@me.com or call 860-608-1187**.

Sisterhood Book Club will have its first gathering at the home of Book Club Chair, **Suzanne Crawford in Mystic on Tuesday, September 10 - 6:30 for refresh-**

ments and "schmoozing" and 7:00 for book discussion. We will be reading and discussing **"The Chateau" by Jaclyn Goldis**. This should be a very fun read - a murder mystery in a chateau in Provence, France. Secrets revealed could reveal a Jewish connection. If you are interested in being added to the Book Club list, please email **Suzanne Crawford at suzm.crawford@outlook.com**.

As always, the **Wednesday and Thursday Walking Club at Hole in the Wall in Niantic at 10:00 AM** continues. If you would like to be added to the Walking Club email list, please email **Debra Wool** at debra-wool@gmail.com.

UPCOMING EVENTS in 2024

Sunday, September 8 - Temple Open House - Stop off at the Sisterhood table and bring a prospective "new member" friend.

Wednesday, October 2 - Erev Rosh Hashanah Oneg - sponsored by Sisterhood

Sunday, October 6 - Safe Futures Walk at Waterford High at 9:00AM

Tuesday, October 22 - Book Club

Sunday, December 3 - Book Club

Sunday, December 15 - Chanukah Fair

I will continue to email you about **"events in the works"** like a trip to a movie or a play, a service project, or a lunch or dinner out. Please contact me anytime with your ideas for programs you'd like to have this year.

I look forward to seeing you at the "Temple Open House", the "Get Out the Vote Event" and the "Membership Kick-Off Event"!

Barbara



Here's your chance to do your part to fight voter suppression and preserve our democracy.

Temple Emanu-El Sisterhood will be participating in the "Get Out the Vote" campaign

sponsored by The Religious Action Center (RAC), in conjunction with the Center for Common Ground.

All Temple members are welcome to join us on **Wednesday, September 18th from 4-7 pm** at Temple Emanu-El to write postcards to under-represented voters. (See sample postcard below).

All necessary materials will be provided, including postcards, pens, and stamps. A brief instructional video will be shown at the beginning of the session which should answer all of your questions. The link to this video will be emailed to you ahead of time so you can watch it at your leisure should you prefer.



RSVPS REQUESTED BY SEPTEMBER 11TH

RSVP to Moira Ross at moira29ross@hotmail.com or 860-341-1129 (texts are fine)



It's Fall!



That means it's time for the
**Temple Emanu-El Sisterhood
Membership Kick-Off Event!**

Join us for a buffet dinner
Tuesday, September 24 • 6:00 pm
Temple Emanu-El Social Hall

**The Kick-Off Dinner is complimentary to all members.
Annual dues of \$36 may be paid in advance or at the event.**

Temple Emanu-El Sisterhood welcomes all women of
Temple Emanu-El and all Jewish women of Southeastern CT.



RSVP by Sunday, September 15th to Barbara Senges at professeur38@me.com

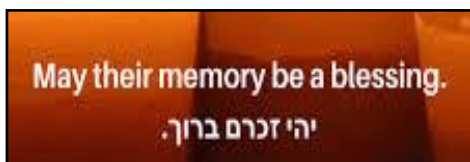
Temple Emanu-El Gift Shop



Contact Anne Cohn to purchase Shabbat candles, candlesticks, yahrzeit candles, High Holiday items, as well as gifts for special occasions. Remember the Temple Judaica shop can order kippot or tallit for a special occasion including for a B'nai Mitzvah. You can reach Anne Cohn anytime for personal visit to our Judaica Shop by emailing annecohn@gmail.com. Feel free to contact Anne for a visit even if you'd like to browse.

Condolences to . . .

the entire **McCaffrey Family** on the passing of
Sharon McCaffrey,
sister-in-law of **Richard & Erica**,
and aunt to **Sierra, Annalise, and Bayla**.



Mazal Tov to . . .



Yitzchak and Amanda Winograd on the birth of their daughter, **Winona Jane**, and to her big brother **William**. Proud Zayde, Bubbe and Tante are **Sam Winograd, Roberta Reisner-Winograd and Hannah Winograd**, respectively

Welcome to the world **Libby Haniel Rosenberg-Choi** born Saturday, July 20, 2024 at 12:43 AM.

Haniel is the daughter of **Elon Rosenberg and Andrew Choi**, and the granddaughter of **Rabbi Aaron and Karen Rosenberg**.

Baking Club

Baking Club will be gathering during the 1st week of Sept. to Bake for Sept. 6 Oneg Shabbat.

Contact Erica McCaffrey, rmccaffrey@snet.net to find out the date, time, and location of the gathering.

Membership Renewal Packets

Membership Renewal Packets have been mailed. If you have not received yours, please contact the office, 860-443-3005 or office@tewaterford.org.

As the Temple Fiscal Year started July 1, 2024, we ask that you please return the packets prior to the High Holidays.

Thank you.

House and Grounds

We have been busy with various projects around the Temple building.

Painters were hired to repaint the main entry hallway to the school.

Volunteers painted the entry to the social hall and Temple. The coat room was also repainted.

Monies were allocated by the board to modify the ladies bathroom. One stall is being removed in order to build a private bathroom for family and transgender use.

We would like to thank Armi Row, Bruce Goldstein, Linda and Michael Barnett, Tom Smith, and Ian Crawford for their very valuable help in making these changes cost efficient.

Michael Barnett

House and Grounds Chair

Sept & Oct Service & Event Schedule

Sept. 4	Wed.	10:00 A.M.	Walking Club at Hole in the Wall in Niantic
Sept. 6	Fri.	6:30 P.M.	Kabbalat Shabbat Service
Sept. 8	Sun.	9:30 A.M.	First Day of Religious School, Preschool, Kadima
		10:00 A.M. – 2:00 PM	Farmer's Market Open House
Sept. 9	Mon.	6:00 P.M.	Federation Jewish Community High School
Sept. 10	Tues.	6:30 P.M.	Sisterhood Book Club at the Crawford Residence
Sept. 11	Wed.	10:00 A.M.	Walking Club at Hole in the Wall in Niantic
		4:30 P.M.	Religious School
		7:30 P.M.	Board of Trustees Meeting
Sept. 13	Fri.	6:30 P.M.	Kabbalat Shabbat Service
Sept. 15	Sun.	9:30 A.M.	Religious School, Preschool, Kadima
Sept. 16	Mon.	6:00 P.M.	Federation Jewish Community High School
Sept. 18	Wed.	10:00 A.M.	Walking Club at Hole in the Wall in Niantic
		1:00 P.M.	Mah Jongg Circle
		4:00 P.M.	Get Out the Vote Postcard Event
		4:30 P.M.	Religious School
Sept. 20	Fri.	6:00 P.M.	Shabbat Service
		6:30 P.M.	Shabbat Dinner
Sept. 22	Sun.	9:30 A.M.	Religious School, Preschool, Kadima
Sept. 23	Mon.	12:00 P.M.	Federation Senior Fling
		6:00 P.M.	Federation Jewish Community High School
Sept. 24	Tues.	6:00 P.M.	Sisterhood Kick-off Event
Sept. 25	Wed.	10:00 A.M.	Walking Club at Hole in the Wall in Niantic
		4:30 P.M.	Religious School
Sept. 27	Fri.	7:30 P.M.	Kabbalat Shabbat Service
Sept. 28	Sat.	7:00 P.M.	Tikkun Leil Selichot
Sept. 29	Sun.	9:30 P.M.	Religious School, Preschool, Kadima
		1:00 P.M.	Hebrew Benevolent Cemetery 3 & 4 Visitation with Rabbi Marc Ekstrand & Hazzan Sherry Barnes
Sept. 30	Mon.	6:00 P.M.	Federation Jewish Community High School
Oct. 2	Wed.	8:00 P.M.	Erev Rosh Hashanah Service
Oct. 3	Thur.	10:00 A.M.	Rosh Hashanah Morning Service
		4:30 P.M.	Tashlich, Family Service, - at Hole in the Wall, Niantic
Oct. 4	Fri.	6:30 P.M.	Shabbat Shuvah
Oct. 6	Sun.	9:00 A.M.	Safe Futures Walk
		9:30 A.M.	Religious School
Oct. 9	Wed.	4:30 P.M.	Religious School
Oct. 11	Fri.	8:00 P.M.	Yom Kippur Kol Nidre Service
Oct. 12	Sat.	10:00 A.M.	Yom Kippur Morning Service
		12:30 P.M.	Afternoon and Yizkor Service
		1:30 P.M.	Yom Kippur Discussion in sanctuary
		5:00 P.M.	Yom Kippur Afternoon Service, Nielah, Family Service, Havdalah
		6:15 P.M.	Break-the-Fast
Oct. 13	Sun.	9:00 A.M.	Sukkah Build Party
		9:30 A.M.	Religious School
Oct. 16	Wed.	4:30 A.M.	Religious School
		5:30 P.M.	Sukkot Festival Service in the Sukkah
		6:00 P.M.	Dinner in the Sukkah
Oct. 18	Fri.	6:00 P.M.	Shabbat Service
		6:30 P.M.	Shabbat Dinner
Oct. 20	Sun.	9:30 A.M.	Religious School
Oct. 21	Mon.	12:00 P.M.	Senior Hot Lunch
Oct. 23	Wed.	4:30 P.M.	Religious School
		5:30 P.M.	Simchat Torah and Consecration followed by dinner
Oct. 24	Thur.	10:00 A.M.	Festival Morning Service including Yizkor
Oct. 25	Fri.	7:30 P.M.	Kabbalat Shabbat
Oct. 26	Sat.	10:00 A.M.	Shabbat Morning Service; Synthia Diaz Bat Mitzvah
Oct. 27	Sun.	9:30 A.M.	Religious School
Oct. 28	Mon.	12:00 P.M.	Senior Hot Lunch
			Oct. 30
			Wed.
			4:30 P.M.
			Religious School

September Birthdays

Jay Alpert
 Sherry Barnes
 Michael Barnett
 Matthew Blum
 Eli Blumer
 Mitchel Corah
 Scott Daniels
 Golda Siegel Doyle
 David Engelman
 Liam Feldman

Sandra Fisher
 Bruce Flax
 Sarah Folstein
 Shirley Goldblatt
 Leonard Goldstein
 Jay Hans
 Susan Hausmann
 Matthew Hausmann
 Elyse Hicks
 Sarah Julia Kaplan
 Deborah Kupfer
 Brian Lazarus
 Cynthia Lesser
 Paul Luner
 MicKayla Marcus

Bayla McCaffrey
 Geraldine Mihalko
 Rebecca Morea
 Zachary O'Brien
 Mark Rosenthal
 Peninah Rosenthal
 Phil Schneider
 Nicole Schneider
 Sarah Selke
 Samuel Selke
 Lee Snyderman
 John Teeter
 Philip Trostler
 Jane Weinberg
 Zoe Weiner

Zoe Weiss-Newall
 Yitzchak Winograd
 Sherry Wolfe
 Peter Zelken



Sep. Anniv.

Sean and Anne Bendick
 Andrew Feinstein and
 Elizabeth Bochain
 Lori and Mitchel Corah
 Ian and Suzanne Crawford
 Barry and Cecile Feldman
 Abraham and Sandra
 Fisher
 Gerry and Hali Keeler
 Paul and Anne Luner
 Richard and Erica
 McCaffrey
 Zachary and Madison
 Meisner
 Shoshanna Weiss and
 Mark Newall
 John and Jamie
 Stavropoulos
 Sheldon and Amy Stricker
 Martin and Margaret
 Trehub
 Scott and Jennifer Zettler
 Yaniv and Carolyn Ziv

September 6
 Mollie Azaroff
 Leah Betten
 Daniel Bloomfield
 Michael Crystal
 David Fearer
 Judy Fishbone
 Lanny Glasgow
 Ann Grant
 Nathan Greenhouse
 Theodore "Teddy" Irwin
 Gertrude Krinick
 Emily Lasser
 Cory LeVine
 Selma Orenstein
 Irving Rozen
 Solomon Schaferman
 Tibe Smith

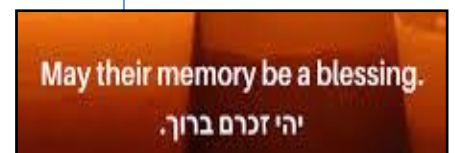
September 13
 Jeffrey Chaet
 Harry Chevan
 Sarah Davidson
 Wilkomer
 Yetta Diamond
 Rose Dibner
 Rabbi Chiam Feuerman
 Jack Fischburg

Michael E. Friedman
 Pearl Glasgow
 Harold Goteib
 Isadore Gotleib
 Evelyn Graber
 Dorothy Green
 Libby Isaac
 Boris Liberman
 Bernice Moeller
 Mildred Pincus
 Robert Schor
 Sylvia Stoner
 Herbert Swiedler
 Arlene Wessel

September 20
 Harold Alpert
 Eleanor Baker
 Jack Dinsfriend
 David Flitt
 Sarah Ann Grayson
 Jeffrey Greenberg
 Charlotte Hoper
 Roz Leader
 Richard Levine
 Michael Manson
 Isidor Meckler
 Claude Moynihan

Richard Namenson
 Dorothy Rosen
 Samuel Shapiro
 Esther Stein
 Abraham Sutel
 Alvin Swatzburg
 William Thorp
 Sindy Vail
 Dr. Norman Zeldis

September 27
 James Connell
 Eileen Kaplan
 Sol Krasner
 Eleanor Krasney
 Miriam Emily Lamchick
 Alvin Michaelson
 Seymour Ofstein
 Carl Ruck
 Joel Weiss



We are eternally thankful for the support of those below

Building Fund

Linda and Michael Barnett
--in loving memory of Gunther Goldman,
father of Linda Barnett, on his yahrzeit

Cantor's Fund

Al and Norma Hollandersky
--in memory of Henry Dunkerley
Harvey and Ellen Schiller
--in honor of Winona Jane Winograd, new
granddaughter of Sam and Roberta Reisner-
Winograd
--in loving memory of Jodie Gorin Stewart on her
yahrzeit
--in loving memory of Eileen Iorillo on her yahrzeit

Capital Improvements

Henry Dunkerley

Endowment

Michael Barnett

Essential Services Fund

Aaron and Karen Rosenberg
Amy Perry & Bill Posage
--in loving memory of Claire Perry on her yahrzeit
Bruce Engelman
--in loving memory of Ada Engelman on her yahrzeit
Edward Perry
--in loving memory of Claire and Elaine Perry on their
yahrzeits
Ellen Gottfried
--in loving memory of Abraham and Marion Gottfried
on their yahrzeits
Greg and Debbie Kupfer
--in loving memory of Frieda Kupfer on her yahrzeit
Kenneth and Kimberly Fischburg
--Congratulations to Roberta and Sam Winograd
on the birth of their granddaughter
--in honor of Rabbi Aaron and Karen Rosenberg on
the birth of their granddaughter, Libby Haniel
Rosenberg-Choi
Martin and Joanna Lazarus
--in loving memory of Irene Levy on her yahrzeit
Nate and Shelley Weiss
--in loving memory of Charley Bitzalel Weiss
Ben Abraham on his yahrzeit
Patricia and Alan Gruber and Sons
--in loving memory of Morton Klieback on his yahrzeit
--in loving memory of Angela Klieback on her yahrzeit

Goldsmith-Kallan Fund

Jane and Marvin Schnur
--in loving memory of Nathan Rappoport on his
yahrzeit
Karen and Stanley Bloustine
--in honor Roberta and Sam Winograd on the birth
of their granddaughter
--in honor of Rabbi Aaron and Karen Rosenberg on
the birth of their granddaughter, Libby Haniel
Rosenberg-Choi

Kitchen Fund

Karen and Stanley Bloustine
--in loving memory of Rose Baker on her yahrzeit

Lothar Knobel Library Fund

Mark and Alexandra Rosenthal
--in loving memory of Rose Rozen on her yahrzeit

Mitzvah Fund

Bart A Sayet and Lori Lindfors
--in loving memory of Mark Sayet on his yahrzeit
Judy and Steve Mann
--in memory of "Ron" Jay Flax
--mazel tov to Rabbi Aaron and Karen Rosenberg
on the birth of their granddaughter, Libby Haniel
Rosenberg-Choi
Judy, Steve, Seth & Jessica Mann
--in loving memory of Louis Galvin, Belle Galvin
and Leonard Massman

Rabbi Aaron Rosenberg Tikkun Olam Scholarship

Al and Norma Hollandersky
--congratulations to Roberta and Sam Winograd on
the birth of their granddaughter
Matthew and Florence Lewiss
--in loving memory of Harry Tulman on his yahrzeit

Rabbi's Discretionary Fund

Al and Norma Hollandersky
--in loving memory of Warren Hollandersky on his
yahrzeit
Barry and Stephanie Thorp
--in loving memory of Michael Crystal on his
yahrzeit
Debra Wool
--in loving memory of my mother, Arleen Berliner,
on her yahrzeit

CONTINUED ON PAGE 14

Please make checks payable to Temple Emanu-El and remit to PO Box 288, Waterford, CT 06385

We are eternally thankful for the support of those below continued from page 13

Harvey and Michele Snitkin
--in loving memory of Bessie Snitkin on her
yahrzeit
Irma Flitt
--in loving memory of my loving husband,
Alvin "Sonny" Flitt on his yahrzeit

Ruth Joan Brody Religious School Fund
Barry and Cecile Feldman
--in celebration of the birth of Winona Jane
Winograd

Peter and Lisa Marcus
Lori and Mitchel Corah
--in loving memory of Sherman Marcus on his
yahrzeit

Security Fund
The Novicks
The Mazzas
Allison Glickman
--in loving memory of Sharon Faye McCaffrey
on her yahrzeit

Social Action Committee

The Social Action Committee will be at the Open House on September 8.

Please stop at our table and ask us what we do. New members are most welcome.

Our next major event will be the food drive during the High Holidays.

Each congregante/family will be given a bag with a list of items needed by

The Gemma Moran United Way Labor Food Center. That center distributes food to many food pantries in the area. The bags can be brought back anytime by Yom Kippur. There is a connection between our fasting and bringing food for others.

The Reform Action Center has a goal of 100% participa-

tion of all congregants in voting in this November's elections. I have information on asking for Absentee Ballots or centers for early voting. There is also a Connecticut group of representatives from Reform congregations who are planning to encourage voting. I have been to some of their meetings and there is a wealth of information. Please contact me to learn about this group and the information. Consider joining Sisterhood in their Get Out the Vote postcard campaign on September 18 at 4:00 PM, see the Sisterhood article in this bulletin.

See you at the Open House.

Karen Bloustine

bloustinek@gmail.com / cell: 860-326-6377

Thank you to everyone who led services this summer!

Hazzan Sherry Barnes, Stan Bloustine, Anne Cohn, Jeff Elkin, Cecile and Barry Feldman, Jeff Elkin, Amy Greenberg, Norma Hollandersky, Barbara Luftglass-Morea, Jo Michaelson, Roberta Reisner-Winograd, Susan Rosen, Aaron Rosenberg Rabbi Emeritus, Karen Rosenberg, Amanda Rowe, Armi Rowe, Jonathan Rowe, Nathaniel Rowe, Barbara Senges, Eileen Shapiro, Irene Brickman

Smith, Tom Smith, Michele Snitkin, Claire Warren, Gail Weber, Steve Weber, Sam Winograd, Barbara Wolfe, Scott Wolfe, Debra Wool, and Emma Zekin

Thank you to HAZZAN SHERRY for all her support and for encouraging everyone to participate and being our guide and shining light.

Drop - In Mah Jongg

Drop - In Mah Jongg Circles will be starting again on

September 18 from 1:00 – 4:00 P.M.

2024 Recipients of Rabbi Rosenberg Tikkun Olam Scholarship Award

EMMERSON KAYE and MILES APPLEBY



The Rabbi Rosenberg Tikkun Olam Scholarship Award Committee selected **Miles Appleby and Emmerson Kaye** as this year's honorees. From the award's inception in 2016, sixteen seniors have received

this award. At the Shabbat Service on May 17, Miles Appleby and Emmerson Kaye became the seventeenth and eighteenth recipients. Miles and Emmerson were awarded a scholarship check, a framed award certificate, and their names have been added in our place of honor on the plaque in the Temple Atrium. Both Miles and Emmerson have demonstrated strong leadership in making their commitment to Tikkun Olam and Social Justice a reality.

EMMERSON KAYE is the daughter of Tammy and Rick Kaye of Old Lyme.

Emmerson has followed in the footsteps of her parents, who have been active members of Temple Emanu-El for over ten years, and her brother Regan, who was also a recipient of the Rabbi Rosenberg Tikkun Olam Award in 2021.

Emmerson has worked as a Faculty Assistant in the Temple Emanu-El Religious School since 2021. She became so adept at working with Kindergarteners and First Graders that she occasionally stepped into the teacher role. She has developed lessons and crafts, and worked tirelessly to make sure that all the students are successful.

Emmerson has been a leader in BBYO (B'nai Brith Youth Organization), serving as President, Vice President and Vice President of Membership. During her tenure, Emmerson has been instrumental in revitalizing the groups' membership with her creative ideas and also expanding the role of tzedakah and community service.

Emmerson is a recent graduate of Old Lyme High School, where as a member of the National Honor Society she led the school's holiday toy drive. She served on the Student Advisory Council and was a member of Amnesty International. Emmerson is an active member of Kids Court Academy, which is run by the Connecticut Commission on Human Rights and Opportunities. She "has been empowered to use her voice and stand up for injustice in her own community, including tackling the rise of antisemitism in her community". Emmerson rallied her Jewish friends to write letters to the Connecticut Legislature to support the passage of the Holocaust and Genocide Funding Act. She also urged teachers at her school to implement the "Encountering Survivors" program where students "could learn about first-hand accounts of Holocaust survivors as well as discuss modern day antisemitism and draw parallels between the two". As her Senior Project, Emmerson reviewed her school's Holocaust Curriculum to "identify gaps with the goal of proposing a more well-rounded curriculum", organized youth discussion panels about the Holocaust and antisemitism, and investigated school codes of conduct to help Jewish youth determine best avenues to report antisemitism.

Emmerson is also a talented artist and has had many of her works exhibited in the Lyme Youth Art Show. Next year, Emmerson will be attending Stonehill College in Easton, Massachusetts majoring in Political Science and International Relations. Emmerson chose this school because of her commitment to Tikkun Olam. Stonehill is very service driven based on the philosophy of repairing the world and measuring success by a student's impact on others.

MILES APPLEBY is the son of Celena Reiser of New London and Jason Appleby of Groton; grandson of Lance and Lori Reiser of West Hartford and Mary Pescatello of Quaker Hill and great grandson of the late Morris and Rhoda Reiser.

Miles has worked as a Faculty Assistant in the Temple Emanu-El Religious School for his entire four years of

CONTINUED ON PAGE 16

2024 Recipients of Rabbi Rosenberg Tikkun Olam Scholarship Award

EMMERSON KAYE and MILES APPLEBY continued from page 15

high school. Miles believes that “through imparting knowledge, instilling values and fostering a love for Jewish learning” he is “actively contributing to the transmission of our rich cultural heritage”. Miles has also been a faithful member of BBYO for the last four years and this year served as President.

Miles has just graduated from Fitch High School in Groton where he served as President of his class, running on a platform of improving the mental health and connectedness of his peers. During his tenure, he founded the Mental Health Awareness Club at Fitch. In addition to his community service activities through BBYO, Miles is an active member of Fitch’s National Honor Society and a Black Student Union Ambassador. Miles also finds time to indulge in his love of dance, which he has studied for seven years; he is a senior dance company member and captain for Dancers Ink and a lead choreographer for Vermont Youth Dancers.

This fall, Miles will be attending the University of Delaware where he will be pursuing a major in Political Science.



September Shabbat Dinner

Friday, September 20 at 6:00 p.m.
A brief but meaningful service in the sanctuary
6:30 p.m. Shabbat Dinner in the Social Hall

RSVP by Sunday, Sept. 16

* Please feel free to bring a dessert to share

RSVP for Shabbat Dinner by calling (860) 443-3005 or email office@tewaterford.org and send pre-payment to: Temple Emanu-El, P.O. Box 288, Waterford, CT 06385

Name: _____

Email address: _____

Phone: _____

Adults: _____ # Children: _____

Vegan Option: _____ Total Enclosed: _____



PO Box 288
Waterford, CT 06385
860-443-3005
www.tewaterford.org

Marc E. Ekstrand
Rabbi

Sherry Barnes
Cantorial Soloist

Aaron Rosenberg
Rabbi Emeritus

Armi Rowe
President

August 26, 2024

Each year our Temple publishes a **Book of Memory** that contains the names of loved ones whom we wish to remember on Yom Kippur. The names of those who have passed away since last Yom Kippur appear on a separate page and will be read during Yizkor. We ask you at this time to submit the names of those that you wish to appear in this year's **Book of Memory**.

This is a traditional time to donate in memory of our loved ones. Your donation will be used to offset the cost of printing and mailing the **Book of Memory**. A donation would be greatly appreciated, but is not required in order to have a listing. If you make a donation towards the **Book of Memory**, please indicate whether you plan on attending Yom Kippur morning services in person to pick up a book or if you prefer a copy of the book be mailed to you. *If you are contributing in order to have names included, but do not need a copy of the book please let me know. This is important so I know how many to print.*

Please fill in the reply form and return it to the Temple office by **Monday, September 16**. We will be submitting our final copy to the printer shortly thereafter in order to allow for additional mailing time, so please don't delay in responding.

Thank you for your cooperation.

Sincerely,

Roberta Reisner-Winograd
Office Administrator

2024 Book of Memory 5785

Please check "all that apply":

- New Listing
- Donation enclosed
- It is not necessary to print a book for me.
- I will pick up a book in person at Yom Kippur Morning Services which includes Yizkor.
- I would like a copy of the book mailed to me.

Names to be remembered,

Remembered by,

High Holiday Policy

Our services are open to all. If you are not a member of our congregation, we encourage you to consider joining. Just contact the Temple office. If you are not ready to join us yet, please consider making a donation on our website. Your support is a mitzvah. We exist only with your support.

Families with younger children are encouraged to attend Family Programs on Rosh Hashanah, and Yom Kippur. Our family program and closing service (Ne'ilah) will be followed by a Break-the-Fast.

Families with students in the religious school 6th grade and older are especially encouraged to attend all services and family programs. Younger students are welcome at all services considering their ability to respect the worship of the community.

Selichot

Tikkun Leil Selichot Service, Program, and Oneg is on Saturday, September 28, 7:00 P.M., Join us at Temple Emanu-El for this moving service during which we will change our regular, colorful Torah mantles to white, High Holiday mantles.

Cemetery Visit

Rabbi Marc Ekstrand and Hazzan Sherry Barnes will be at the Hebrew Benevolent Society Cemetery #3 & #4 on Middle Rd. in Preston on Sunday, September 29, from 1:00 P.M to 1:30 P.M.

Feeding the Hungry During Tishri

On Yom Kippur we read prophetic words of Isaiah that remind us of the Divine imperative that food and water be available for all in our community. The harvest festival of Sukkot reminds us that many of us have abundant resources to share. Let us thank God for our abundance by sharing with those in need. The Gemma E. Moran United Way Food Center is in need of our help. Upon arriving at all services, please place your food donations in the bins in the foyer. The mitzvah will leave you with a good taste.

Wednesday, Oct. 2 Erev Rosh Hashanah Service, 8:00 PM

Thursday, October 3 Rosh Hashanah **Morning** Service, 10:00 AM

Family Rosh Hashanah and Tashlich where we symbolically cast our sins upon the water – 4:30 P.M. In previous years we created a more environmentally sound Tashlich practice. You are still welcome to bring breadcrumbs. However, we will provide small stones polished by the sea. We will gather in spiritual reflection on our past transgressions before using the water and the sea to orient us toward hope and action in the coming year. Our time will conclude with a community Shofar call – you are encouraged to bring your Shofar. Meet at Hole in the Wall, 4 Baptist Lane in Niantic.

Friday, October 4 Shabbat Shuvah, 6:30 PM

Friday, October 11 Erev Yom Kippur/**Kol Nidre** Service, 8:00 PM

Saturday, October 12 Yom Kippur **Morning** Service, 10:00 AM

Yom Kippur **Afternoon and Yizkor**, 12:30 PM

Yom Kippur **Discussion**, 1:30 PM

Yom Kippur **Afternoon**, 5:00 PM, **Nielah, Family Service, Havdalah**

Break-the-fast beginning about 6:15 P.M.

Sukkah Building Party

For Sukkot the Board of Trustees and Brotherhood will need volunteers to put up and take down the Sukkah. **Help build the Sukkah on Sunday, October 13, at 9:00 A.M.** Our Sukkah is very large, so we need a lot of material for the roof (Schach, in Hebrew). Please bring materials for the Sukkah any time after Yom Kippur. Materials can be piled next to the permanent Sukkah framing that is on the east side of our parking lot. Things like ornamental grasses or cornstalks are ideal for the roof (schach).

Wednesday, October 16 Erev Sukkot-Shabbat Service in the Sukkah, 5:30 P.M, followed by pizza supper in the sukkah.

Erev Sh'mini Atzeret/Simchat Torah & Consecration

Come sing and dance in this joyous celebration of Torah, the beating heart of the Jewish people, at 5:30 PM, **Wednesday, October 23**; we will have Consecration for the newest students in our Religious School and dance with our Torahs, followed by a pasta dinner.

Festival Morning Service -Shmini Atzeret/Yizkor, Thursday, October 24 at 10:00 A.M.



**FOR ALL YOUR
REAL ESTATE NEEDS**

Direct: 860-443-4400 Cell: 860-625-5255
Email: Geoff@CallTheHouseMan.com
Website: www.CallTheHouseman.com
Blog: CTHouseMan.com

Jewish Federation – Jewish Leader

If you wish to learn more about community wide and world events, please contact Rebecca Reinhard (rebecca@jfec.com or 860-442-8062) at the Jewish Federation and sign up to receive the monthly issue of the *Jewish Leader* if you do not already receive a copy in the mail. You may also see the Federation calendar at www.jfec.com.

Ω Ω Ω Ω Ω

PsychologyCT.com

Schaperow Psychology & Associates:

Thorough diagnostic assessments: psychological testing; individual, group, marital, & family therapy

Drug & Alcohol Treatment:

Clinicians that specialize in drug & alcohol treatment.

And:

Cognitive Behavioral Therapy (CBT) Center:

Evidence-based CBT to improve mental health, and decrease stress for certain physical illnesses.

860-447-2047 / PsychologyCenterOffice@gmail.com

Why rent offices when you can own?

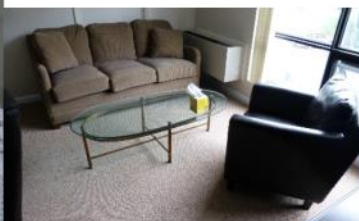
Owning is almost always far better, so spread the word!

The Schaperows are selling a portion of their Waterford Professional Complex condos. Email PsychologyCenterOffice@gmail.com, or call/text 8602715233 to inquire.

If you know anyone who's leasing, please let them know of this tremendous opportunity and forward them our contact info.

Psychology CT LLC is **seeking renters**, as we have **beautiful offices available** in Waterford. These offices are perfect for professionals (e.g., therapists, massage therapists, small practice attorneys & accountants, certain kinds of physicians, etc.), especially those that don't need a reception area, but may still benefit from a waiting area. Please see

<https://sites.google.com/site/schaperowpsychology/office> for details, or email psychologycenteroffice@gmail.com for more information.



TEMPLE EMANU-EL
PO BOX 288
WATERFORD, CT 06385

Please use PO BOX 288 WATERFORD, CT 06385
when mailing material to the temple

Non-Profit
Organization
U.S. Postage PAID
New London, CT
06320
Permit #480

Deadline for Oct. 2024 Bulletin is Friday, Sept. 13

Email your articles to Roberta at office@tewaterford.org

CHANGE SERVICE REQUESTED

Our Leadership

Rabbi / Marc Ekstrand / rabbi@tewaterford.org
Rabbi Emeritus / Aaron Rosenberg / arloveskr@aol.com
Cantorial Soloist / Sherry Barnes /
cantorialsoloist@tewaterford.org
President / Armi Rowe / president@tewaterford.org
1st Vice President / John Murphy
VP Building and Grounds / Michael Barnett
VP of Religious Practices / Samuel Winograd
Treasurer / Ian Crawford / treasurer@tewaterford.org
Vice Treasurer / Bruce Goldstein
VP Membership / Emma Zelken
Recording Secretary / Jo Michaelson
Corresponding Secretary / Robbin Alpert
Immediate Past President / Andrew Parad
pastpresident@tewaterford.org
3 Year Trustees: Byrne Blumer, Andrew Goldman, Nathaniel Rowe,
Janine Sitko
2 Year Trustees: Sheri Pascal, Emma Zelken, Hali Keeler, Tom Smith
1 Year Trustees: Sue Fornara, Jennifer Zettler, Scott Zettler,
Carolyn Ziv
Security Committee Chair / Rich McCaffrey

Social Action Co-Chairs / Karen Bloustine
Sisterhood / Barbara Senges/ sisterhood@tewaterford.org
Gift Shop / Anne Cohn / judaicashop@tewaterford.org
Brotherhood / Open / brotherhood@tewaterford.org
Kitchen Committee Chair / Erica McCaffrey
Religious School Committee Chair / Jennifer Zettler
Religious School Administrator / Lisa DeVito Marcus/
religiousschool@tewaterford.org
Library / Sheri Pascal
Communications Committee Chair: Sue Fornara
Office Administrator / Roberta Reisner-Winograd /
office@tewaterford.org
Webmaster / Aaron Kaplan / webmaster2@tewaterford.org
Custodian / Don Kasper
Bulletin Editor / Mimi Perl
Temple Location: 29 Dayton Road, Waterford, CT 06385
Temple Mailing Address: PO Box 288, Waterford, CT 06385
Office: **860-443-3005**
Religious School: **860-443-3005**
Website: www.tewaterford.org