



# 10th Annual Cabaret Night

Saturday, February 1, 2025 at 7:00 pm

Appetizers, Havdalah,  
Variety Show & Dessert

\$36 suggested donation  
per person - Benefits the  
Essential Services Fund

Temple Emanu-El  
Social Hall

29 Dayton Road,  
Waterford, CT

Please RSVP by 1/26/25 to office at 860-443-3005  
(Snow date: Saturday, Feb. 8)

## President's Message - Armi Rowe

As a media planner in my twenties, I purchased millions of dollars of television airtime and magazine ad space on behalf of Fortune 500 companies. On a regular basis, on our way out, my co-workers and I would be handed a bunch of menus and car vouchers and told, "Not so fast. Client needs 3 new media plan options at this new budget level first thing in the morning. Let's go!"

I left that business after 8 years. But I learned a lot of valuable number lessons from the industry. As a literature and rhetoric major amongst a sea of marketing and business majors, I learned to analyze media research statistics and to evaluate the merits of plans. Clients were concerned with maximizing

cost efficiencies, media value, and premium brand positioning. Even when comparing one magazine to its closest competitor, I had to find evidence to rationalize why I recommended one over the other. Sometimes it required an editorial analysis, which could be subjective. That was the human part of the job. We were empowered to spend responsibly, just as you entrust our Temple Board.

I share this with you because our Board faces budget realities mid-year, every year. This is when dues begin to slow and we go into heavy planning for our events for the second half of the year, to close the

CONTINUED ON PAGE 2

## President's Message - Armi Rowe continued from page 1

budget gap as much as possible. Our Temple's reserve fund is not a savings fund that is set aside for a purchase down the road. It's more of a parking place from which we draw funds we know must cover our annual shortfall.

Our Board has been dedicated to growing and retaining our membership and we are avidly evaluating more marketing and building use opportunities. We are expanding the scope of outreach for our upcoming events: Cabaret Night, Deli Day, and now also the Progressive Dinner and the Inaugural Terri Goldsmith Golf Tournament. More importantly, it is crucial that our Board be super fiscally responsible at this juncture. We must continue to conserve our resources until we are able to stabilize the budget.

In the spirit of transparency, I need to inform you that our Board of Trustees had to look hard at our numbers and make the difficult decision at our December Board meeting to decline the Jewish Federation of Eastern Connecticut's request for us to contribute \$10,000 toward next year's Young Israeli Emissary Program. As much as we would have liked to meet the request, our budget is unfortunately no longer able to support it. We deliberated over this heartbreaking dilemma because so many of us have enjoyed the experiences and interactions with the emissaries over so many years. Marcia Reinhard has been an amazing leader and major force in cultivating this amazing bridge between Israeli and American Jewish youth and families. We are forever grateful for her dedication.

I hope I will see many of you at our 10<sup>th</sup> Annual Cabaret Night. It is always a very entertaining and

memorable evening filled with laughter, reunions, and new connections.

Please stay safe out on the roads this month. We have a solid snow plowing service contract, so we're ready for any inclement weather and we will keep you informed in case of building closings and program cancellations or changes in event schedules.

Stay healthy and safe,

**Armi**

### Board Meeting Highlights

1. The Board voted to decline request from JFEC to contribute \$10,000 toward next year's Emissary Program.
2. The Executive Committee will review energy costs for the past 18 months and circle back with Beth El.
3. Sisterhood and Temple Budget will split the cost of new member welcome dinners on Jan. 17.
4. The Deli Day Fundraiser has been scheduled for Sunday, March 2.
5. The Progressive Dinner has been scheduled for Saturday, May 10.
6. The Board of Trustees approved plans for a Shabbaton to be held on the weekend of November 14-15, 2025.

## Notes from Sherry Barnes

Welcome in the New Year 2025! And how exciting to get to light all 8 Chanukah candles on the first evening of the new year, filling it with warmth, love, and lots of light. What an extra special way to start off the new year! May it be filled with new adventures, new friendships, new ideas, good health and fun!

Speaking of fun... our 10th Annual Cabaret Night will be on Saturday, February 1, at 7:00 p.m. There will be appetizers, Havdalah, our talented Cabaret participants entertaining you on stage, followed by

yummy desserts. Check your mailbox, you will be receiving an invitation in a few weeks. If you are interested in participating as an act, it is not too late, contact Armi or me to sign up, or just come to show us what yours might be...it doesn't have to be perfect at this point, at our open call for acts on January 5, and 12, from 12:00. If you're not a singer, poet, dancer, or play an instrument, but would like to be behind the scenes, we would love your help dec-

CONTINUED ON PAGE 3

## Notes from Sherry Barnes continued from page 2

orating and setting tables, and a couple of stage hands to move mics, props, etc. Of course, we also love having you as a part of the audience to cheer on the show!

I'll be leading most of the Shabbat Services this month and the first week of February.

- January 3 **Emma Zelkin** will be chanting Torah
- January 10 **Jeff Elkin** will be chanting Torah for Share Shabbat
- January 17 Short Shabbat Service with a delicious Shabbat Dinner, cooked by
- Dona and Ken Casey - make sure to call for a reservation.
- January 24 **Rabbi Emeritus Aaron Rosenberg** will lead services with me, the **D'var Torah** will be given by **Susan Rosen**
- January 31 **Rabbi Emeritus Aaron Rosenberg** will lead services with me, the **D'var Torah** will

be given by **Barbara Senges**.

- February 7 **Jeff Elkin and I** will be chanting a special Torah portion for the kids to see at Share Shabbat/Shabbat Shira, the song of the sea.

I'm looking forward to bringing in Shabbat with you and our special guests this month.

Many thanks to the TE Band for playing at the Chanukah Service last month.

Also a big thank you to Armi Rowe for giving the d'var.

Thank you to those who chanted Torah this month.

And thank you to Rabbi Emeritus Aaron Rosenberg for leading services with me.

Wishing all of you a safe and happy New Year!

B'shir,

**Sherry**

## Temple Emanu-El Religious School (TERS) - Lisa Marcus, Administrator

As I sit to write this, the last of the students have walked out the door for winter break. It is hard to believe the school year is almost half over already! Soon Ben and Yahav will be returning home to Israel for a visit, and Purim will be here before we know it. But I am getting ahead of myself.

Many thanks to all the families who donated gently used coats and boots and the like as well as the many bags of new hats and gloves and mittens to the Winter Coat Drive. The New London Public School Systems Families will make very good use of them!

A sincere thank you to Michele and Jason Kessel as well as Sarah and Gregg Selke for donating their time during the Chanukah Celebration on December 15. It was a huge success. I think the fan favorite activity was BINGO with Ben and Yahav! Of course, anything with Ben and Yahav is AMAZING!! Did you see their Chaunkah Bulletin Board? If you have not, you must!!

TERS will be missing Rabbi Marc during his sabbatical, but we are blessed to have those who are shar-

ing their time with us in his absence. A huge thank you to Sam Winograd, Libbie Duskin, and Karen Rosenberg for stepping up when called upon to do so. And of course, Hazzan Sherry will be just that much more invaluable! Thank you to all.

Before I finish writing, I just want to thank each of our parents and grandparents for bringing their students to religious school week after week. I know the demand on their time is immense and they could choose to send their children elsewhere for enrichment. It warms my heart that they choose to send their children here...to religious school. Parents and Grandparents: Please take a moment over the break and share with me your feedback. I would love to hear your feedback as I prepare to plan out next year's activities.

Shalom,

**Miss Lisa**





## 2024 Raffle Sells out and raises \$18,000.

The 2024 Temple Raffle was drawn on Sunday, Dec 15 at 6 pm during the well-attended Brotherhood Latke dinner in front of over 110 people. The **winning** tickets were drawn by the Jewish Federation **of Eastern Connecticut's** young **Israeli** emissaries, Ben and Yahav. I want to thank all the people who bought tickets to the raffle along with the sponsors listed below. **The raffle's proceeds directly benefit the Essential Services Fund which helps us address our critical budget gap.** Mazel Tov to all the winners.

In addition, I want to thank Barry Feldman, Marcia Reinhard, Armi Rowe, Scott Wolfe, Roberta Winograd and David Senges-Murphy for all their help with ticket sales.

1. **Anonymous**- 5 – \$500 visa gift cards - **Winner: David Levine**
2. **Sayet and Seder** – 13" iPad Pro **Winner: Erica McCaffrey**
3. **Gary and Iris Freeman** - \$500 Visa Gift Card **Winner: Sherry Barnes**
4. **Bill and Ellen Seeman** - \$300 Target Gift Card **Winner: David Levine**
5. **Adam Kaufman and Rebecca Woodward** - \$200 Walmart Gift Card **Winner: Eleanor Hoffman**
6. **John Murphy and Barbara Senges** - \$150 Lowes gift card **Winner: Nancy Accurso**
7. **Armi and Jonathan Rowe** - \$100 Amazon gift **Winner: Michael Betten**

***John Murphy,***

**Raffle Chairman & Temple Emanu-El First Vice President**



## Sisterhood -- Barbara Senges, President

Ladies,

November and early December have continued to be busy with Sisterhood get-togethers. Thank you to **Pamela Kilbey-Fox** for hosting our **December Book Club**. Thank you to **Eileen Shapiro** for organizing the **December 30 Movie Club**. Many thanks to **Sue Fornara** for designing new Sisterhood notecards.



Thank you to all of you who helped with the **Chanukah Fair Set-Up on Saturday, December 7** and the **Chanukah Fair on Sunday, December 8** from



**9:30 to 12:30.** The event was extremely successful and raised \$1,600! Many thanks and compliments to **Anne Cohn** for providing such a great selection of gifts and all her hard work and dedication in organizing and running this event.

Thank you to **Linda Barnett** for donating her handmade Mahjongg tile keychains and necklaces to our Judaica Shop. The keychains were a big hit at the Chanukah Fair! Sisterhood will also be offering these for sale at the Mahjongg Tournament on June 10.

### UPCOMING JANUARY EVENTS

- **Tuesday, January 14 – Book Club at the home of Karen Bloustine at 6:30PM in Niantic.** We are reading “The Nightingale” by Kristin Hannah. Contact Suzanne Crawford at [suzm.crawford@outlook.com](mailto:suzm.crawford@outlook.com) if you are interested in joining us. I have a copy of the book if anyone would like to borrow it. It is really great!

- **Friday, January 17 at 6:00PM – New Sisterhood Members and their families** have been invited to be the guests of Sisterhood and the Temple at the Shabbat Dinner.
- **Thursday, January 23 at 7:00PM – TRIVIA NIGHT ON ZOOM** – This is an added event from the original calendar! SEE THE FLYER in THIS BULLETIN. Please RSVP to me at [professeur38@me.com](mailto:professeur38@me.com) no later than Sunday, January 19.
- **Thursday, January 30 – Rosh Chodesh with Hazzan Sherry at 1:00PM.** Please RSVP to me at [professeur38@me.com](mailto:professeur38@me.com) no later than Monday, January 27.
- **Date to be Determined – Movie Club**

### FEBRUARY EVENTS

- **Thursday, February 27 – Rosh Chodesh at 1:00PM**
- **Friday, February 28 at 6:30 at Temple – Annual Sisterhood Service.** Thank you to Eileen Shapiro for volunteering once again to organize this spiritual event. Please RSVP to Eileen at [esfinallyhasemail@comcast.net](mailto:esfinallyhasemail@comcast.net) no later than Friday, February 14. Please indicate if you would prefer a Hebrew, English or non-speaking part.
- **Date To be Determined – Movie Club**

### SAVE THE DATE

- **Sunday, March 16 at 1:00PM at the Temple – Presentation by Yahav, our wonderful Israeli Emissary.** She will speak to us about the many aspects of Israel’s colorful culture and answer questions posed to her about life in Israel. Stay tuned for more info. We are investigating babysitting services for those of you with young children.

Happy New Year!

May 2025 bring peace to the world!

**Barbara**

CONTINUED ON PAGE 6



**Whoo Hoo - Another Sisterhood  
Trivia Night!**

Join the Temple Emanu-El Sisterhood  
for a fun evening with friends and trivia!

**Thursday, January 23rd • 7 pm • On Zoom**

**RSVP** to Barbara at [professeur38@me.com](mailto:professeur38@me.com)  
by Sunday, January 19th





Thank you to **Linda Barnett** for donating her handmade Mahjongg tile keychains and necklaces to our Judaica Shop

## DEADLINE FOR ORDERING 2025 MAHJONGG CARDS IS COMING SOON!

Orders and payment for 2025 NMJL Cards **must be in by January 31st**. These are the cards that will be mailed to you April 1st, for use during the following 12 months. We receive a donation from the League for all cards that are part of this pre-order. This is a significant fundraiser for Sisterhood, allowing us to contribute to many activities in the community and temple.

**Cost for cards is \$15 for large size and \$14 for standard size.** (This is the same cost from any reputable vendor. If you see them for less, then they are counterfeit and not part of the NMJL charitable non-profit organization.)

Make checks payable to: Temple EmanuEl Sisterhood, and provide recipients' mailing address and email.

These will be sent directly from the NMJL anywhere in the country, so feel free to order for friends and relatives.

Please contact Iris Freeman at [ifreegang@aol.com](mailto:ifreegang@aol.com) or 860-460-3081 for additional information or questions.



### SAVE THE DATE:

The spring Temple Emanuel Sisterhood  
**Mah Jongg Tournament will be on Tuesday, June 10, 2025.**

**Sisterhood -- Barbara Senges, President continued from page 7**

**More Chanukah Fair Photos**



*Check out at Sisterhood Chanukah Fair*



*Shopping at Sisterhood Chanukah Fair*



*Gift wrapping at Sisterhood Chanukah Fair*



## Condolences to . . .

The **Weber and Basile Families** on the passing of **Joyce Zion**, mother of **Gail Weber**, mother-in-law of **Steve Weber**, mother of **Laurie Basile** and mother-in-law of **Bob Basile's**.

Her grandchildren are **Michael Weber, Aaron Weber, Dara Ritterband, Shara Mavrosos** and **Matt Zion-Basile**.

Her great grandchildren are **Jack Weber, Wren Weber, Phoebe Ritterband, Ezra Ritterband, Blake Mavrosos, Remi Mavrosos, Willow Mavrosos** and **Hazel Mavrosos**.

### Writers Circle

The Writers Circle will be meeting on **Friday, Jan. 10 at 1:00 PM.**

If you are interested in joining, contact Armi Rowe at [president@tewaterford.org](mailto:president@tewaterford.org)

### Drop - In Mahjong

The next Drop - In Mahjong Circle is

**Wed., Jan 15  
from 1:00 – 4:00 P.M.**

Contact **Robbin Alpert** — [rbalpert@att.net](mailto:rbalpert@att.net) with any questions

## Mazal Tov to . . .



**Benjamin and Courtney Miller** on the birth of their daughter, **Shoshana Miriam**, born December 2, 2024, weighing 7 pounds 3 ounces

### Crafters' Club

**Sunday mornings twice a month  
at 10:00am**

**January 19 and 26 .**

If you have any questions, please contact Rebecca, [rebecca.j.morea@gmail.com](mailto:rebecca.j.morea@gmail.com)

**Calling all fiber artists! A crafters' club will be starting at Temple Emanu-El, so come and craft with fellow artists. Lessons in knitting, crochet, and sewing will be available as well. Please bring your own materials and tools.**

### Baking Club

Baking Club will be baking in the Temple kitchen on

**Thursday, Jan. 9 at 6:00 PM.**

Contact **Erica McCaffrey** [emccaffrey15@gmail.com](mailto:emccaffrey15@gmail.com)

## January Service & Event Schedule

Fri.	Jan. 3		RSVP and Payment Due for April 30 Sisterhood Theater Outing to see "Menopause the Musical 2" at the Garde Arts Center. For more info contact Eileen Shapiro esfinallyhasemail@comcast.net
Fri.	Jan. 3	6:30 PM	Kabbalat Shabbat led by Hazzan Sherry
Sun.	Jan. 5	12:00 -3:00 PM	Cabaret Act sign up Contact Sherry if interested
		4:00-6:00PM	Reunion with Roi Refaeli, Israeli Emissary from 2019. He will share his experiences in the Israeli Military as the youngest captain in the IDF
Mon.	Jan. 6	12:00 PM	Jewish Federation Senior Lunch
Tues.	Jan. 7	12:00 PM	Beginning Hebrew w/Hazzan Sherry
Wed.	Jan. 8	10:00 AM	Trope Class w/Hazzan Sherry
		11:00 AM	Intermediate Hebrew w/Hazzan Sherry
Thur.	Jan. 9	11:00 AM	Torah Translation w/Hazzan Sherry
		6:00 PM	Baking Club, RSVP to Erica McCaffrey <a href="mailto:emccaf-frey15@gmail.com">emccaf-frey15@gmail.com</a>
Fri.	Jan. 10	1:30 PM	Writers Circle, RSVP to <a href="mailto:President@tewaterford.org">President@tewaterford.org</a>
		6:30 PM	Share Shabbat led by Hazzan Sherry
Sun.	Jan. 12	12:00 – 3:00 PM	Cabaret Act sign up Contact Sherry if interested
Mon.	Jan. 13	12:00 PM	Jewish Federation Senior Lunch
Tues.	Jan. 14	12:00 PM	Beginning Hebrew w/Hazzan Sherry
		6:30 PM	Book Club led by Karen Bloustine <u>The Nightingale</u> by Kristan Hannah
Wed.	Jan. 15	10:00 AM	Trope Class w/Hazzan Sherry
		11:00 AM	Intermediate Hebrew w/Hazzan Sherry
		1:00 PM-4:00 PM	Drop-in Mah Jongg
		4:30 PM	Religious School
Thur.	Jan. 14	11:00 AM	Torah Translation w/Hazzan Sherry
Fri.	Jan. 17	6:00 PM	Shabbat Service led by Hazzan Sherry
		6:30 PM	Shabbat Dinner
Sun.	Jan. 19	9:30 AM	Religious School
		10:00 AM	Crafters' Club
		12:00 PM	Cabaret Rehearsal
Mon.	Jan. 20	12:00 PM	Jewish Federation Senior Lunch
Tues.	Jan. 21	12:00 PM	Beginning Hebrew w/Hazzan Sherry
Wed.	Jan. 22	10:00 AM	Trope Class w/Hazzan Sherry
		11:00 AM	Intermediate Hebrew w/Hazzan Sherry
		4:30 PM	Religious School
Thur.	Jan. 23	11:00 AM	Torah Translation w/Hazzan Sherry
		7:00 PM	Sisterhood Trivia on Zoom
Fri.	Jan. 24	6:30 PM	Kabbalat Shabbat led by Rabbi Emeritus Aaron

CONTINUED ON PAGE 11

## January Service & Event Schedule — continued from page 10

Sun.	Jan. 26	9:30 AM	Rosenberg and Hazzan Sherry
		10:00 AM	Religious School
		12:15 PM	Crafters' Club
Mon.	Jan. 27	12:00 PM	Kadima – special presentation
Tues.	Jan. 28	12:00 PM	Jewish Federation Senior Lunch
Wed.	Jan. 29	10:00 AM	Beginning Hebrew w/Hazzan Sherry
		11:00 AM	Trope Class w/Hazzan Sherry
		4:30 PM	Intermediate Hebrew w/Hazzan Sherry
Thur.	Jan. 30	11:00 AM	Religious School
		1:00 PM	Torah Translation w/Hazzan Sherry
Fri.	Jan. 31	6:30 PM	Rosh Chodesh Program with Hazzan Sherry
			Kabbalat Shabbat led by Rabbi Emeritus Aaron Rosenberg and Hazzan Sherry

## First Annual – Terri Goldsmith Memorial Golf Tournament May 5

Temple Emanu-El will be holding the 1<sup>st</sup> Annual Terri Goldsmith Golf Tournament at **Great Neck Country Club on May 5, 2025**. We will need lots of help from volunteers to coordinate, organize and run the event. We will be doing a **Cinco de Mayo theme** with more details to be provided in the coming months.

If you are interested in helping please contact the tournament chairman – **John Murphy** by email [jem1219@atlanticbb.net](mailto:jem1219@atlanticbb.net) or call or text at 860 608-0774.

**The first meeting will be scheduled in mid-January.**





## January Birthdays

Moncia Bafetti  
Byrne Blumer  
Willow Blumer  
Lynn Brown  
Kevin Constantine  
Betty Cooper  
Lisa Darling  
Susan Diaz  
Sandra Epstein  
Henry Folstein  
Simon Frischling

Marc Goldsmith  
Felix Daniel Greenmoor  
Patricia Hans  
Samantha Hans  
Patricia Hendel  
Greg Kupfer  
Deborah R. Linder  
Nicholas Mazella  
Jeffrey Mazzella  
Eric Naarden  
Leslie Orenstein  
Tamara Parker  
Marnie Rock  
Solly Ross  
Nathaniel Ross  
Sam Schaperow

Marvin Schnur  
Susan Seeman  
Dr. Adam Seidner  
Lester Shapiro  
Anna Cloe  
Sheikowitz  
Rachel Sherman  
Fiona (FiFi)  
Sherman  
Noah Shiling  
Michael Adam  
Snyderman  
Jared D. Weiss  
Michael Weiss  
Barbara Wolfe  
Jessica Wolfe

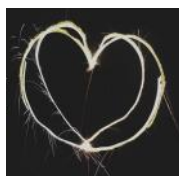
Orion Zelken  
Eliana Marie Ziv



### Jan. Anniv.

No January

### Anniversaries



### Jan. Yahrzeits

#### January 3

Eva Berkowitz  
Randy Deglin  
Samantha Deglin  
Elisabeth Farran  
Henry Germaine  
Edward Gipstein  
Paula Glickman  
Henry Hochman  
Anna Jezeski  
Murray Lazarus  
Tillie Leder  
Sylvia Lewiss  
William Morea  
Roger Rouquette  
Harry Rubin  
Rachel Wessel

#### January 10

Donald Bloom

Morris Brickman  
Gregory Bronfman  
Hannah Cooper  
Elsie Deglin  
William Fishbone  
Audrey Germaine  
Shirley Grayson  
Daniel Kanfer  
Daniel Ravis  
David Rosenfield  
Frederic Rosenstein  
Morris Schiller  
Fred Seeman  
Stanley Skigen  
Louis Snitkin  
Katherine M. Thibault  
Rose Tobin  
Anna Tropp  
Harry Weber  
Al Weinberg  
Harry Winograd  
Richard Donald Zettler

#### January 17

Frances Brensilver  
Philip Cameron  
Milton Chatkin  
Ray Cohen

### January Yahrzeits

Barbara Ellen Lupkay  
Combs  
Tillie Finkelstein  
Max Freeman  
Louis Garfinkel  
Stephen Horton  
Joseph Lasser  
Marilyn Morgenstern  
Doris Reinhard  
Ellen Schwartz  
Alita "Lola" Sevilla  
Reuben Shiling  
Roseleah Stein  
Herman Weber  
Grace Wertheim  
Alice Wiesniewski  
Harold Wolfe  
Carol Blaise

#### January 24

Abraham Irving Epstein  
Elizabeth Glenn  
Esther Hoffman  
Jules Levine  
Jenny Loew  
Eleanor McCaffrey  
Nancy Newall  
David Joel Nirenstein

Frances Ogulnick  
Sophie Pagnes  
Yetta Paulson  
Sigmund Sol Rosenholtz  
Dorothy Segool  
Anna Seidman  
Beatrice Sherman  
Isaaca Zelda Siegel  
Morris Thall  
Rochelle Tripp  
Irwin Tuchfeld  
Mynna Weiss  
Marla Anne Wickes

#### January 31

Helen Arbetter  
Miriam Shoor Ballot  
Henry Berliner  
Vera Crawford  
Edith Greenberg  
Ekstrand  
Michael Bennett  
Freeman  
Ruth Freeman  
Trudy Hans  
Gladys Ilson  
Henry F. Putala  
Harriette Siegel



**MENU**

**Green Salad**

**Taco Chips &  
Guacamole**

**Mediterranean Turkey  
Chili or Vegan Chili**

**Spanish Rice**

**Cornbread**

**ADULTS: \$20 each  
CHILDREN: \$12 each**

*January  
Shabbat Dinner*

**Friday, January 17 at 6:00 p.m.**

A brief but meaningful service in the sanctuary

**6:30 p.m. Shabbat Dinner in the Social Hall**

RSVP by Sunday, January 12

\* Please feel free to bring a dessert to share

RSVP for Shabbat Dinner by calling (860) 443-3005 or email [office@tewaterford.org](mailto:office@tewaterford.org) and send pre-payment to: Temple Emanu-El, P.O. Box 288, Waterford, CT 06385

Name: \_\_\_\_\_

Email address: \_\_\_\_\_

Phone: \_\_\_\_\_

# Adults: \_\_\_\_\_ # Children: \_\_\_\_\_

# Vegan Option: \_\_\_\_\_ Total Enclosed: \_\_\_\_\_

## ***We are eternally thankful for the support of those below***

### **Building Support Fund**

Linda and Michael Barnett

-- in loving memory of Joyce Goldman on her yahrzeit

### **Cantor's Fund**

Karen and Stanley Bloustine

-- in loving memory of Ada Bloustine on her yahrzeit

### **Capital Expenditure Fund**

Andrew and Adrienne Parad

Armi and Jonathan Rowe

### **Endowment Fund**

Michele Snitkin

-- in loving memory of Daniel Iorillo on his yahrzeit

### **Essential Services Fund**

Jean Lasser

Armi and Jonathan Rowe

-- in honor of the birth of Penelope Luna Bugajski-Ekstrand

-- in memory of Cynthia Lee Furman

-- in honor of the birth of Shoshana Miller

-- in memory of Joyce Zion

Bob and Nancy Trostler

-- in memory of Joyce Zion

Bruce Goldstein

-- in loving memory of Avraham Duvid ben Moshe Alfred Goldstein on his yahrzeit

Gary and Iris Freeman

-- in honor of the birth of Gail and Steve Weber's grandson, Ezra Leo Ritterband

-- in honor of the birth of Scott and Barbara Wolfe's grandson, Luke Scott Wolfe

-- in honor of the birth of Rabbi Marc's granddaughter, Penelope Bugajski-Ekstrand

-- in memory of Barry Feldman's mother, Shirley Feldman

-- in memory of Donna Goldman

-- in memory of Abe Fisher

-- in memory of Robyn Krasner's mother Vivien Falk and aunt Barb

-- in memory of Henry Dunkerley

Jane and Chic Weinberg

-- in loving memory of Molly Rifkin on her yahrzeit

Judy and Stephen Mann

-- condolences to Marcie and Howard Brensilver on the loss of Julie Hirsch

Karen Dinsfriend

- in loving memory of Golda Dinsfriend on her yahrzeit

Kenneth and Kimberly Fischburg

- in honor of the birth of Penelope Luna Bugajski-Ekstrand

- in memory of Joyce Zion

Lois and Don Steinman

- in memory of Joyce Zion. Loving mother, mother-in law, grandmother, great grandmother of the Weber and Basile families.

May her memory always be a blessing.

Nathan and Shelley Weiss

- in memory of Joyce Zion

Patti and Alan Gruber & sons

- in loving memory of Herman Gruber on his yahrzeit

- in loving memory of Jeanette Gruber on her yahrzeit

Robert Linden

- in loving memory of Caren Linden on her yahrzeit

### **Mitzvah Fund**

Barry and Cecile Feldman

- in memory of Julie Hirsch

Gail and Steve Weber

- in honor of the birth of Penelope Luna Bugajski-Ekstrand

Hali and Gerry Keeler

- in memory of Ethel Schnable on her yahrzeit

- condolences to Marci Brensilver on the loss of her sister

- in memory of Joyce Zion

### **Rabbi Aaron Rosenberg Tikkun Olam Scholarship**

Matthew L. Lewiss

- in loving memory of Lillian Gertz Lewiss on her yahrzeit

### **Rabbi's Discretionary Fund**

Barry and Cecile Feldman

- in honor of the birth of Penelope Ekstrand

Irma Flitt

- in honor of the birth of Penelope Ekstrand

Judi Glickstein

- in memory of Joyce Zion

***Please make checks payable to Temple Emanu-El and remit to PO Box 288, Waterford, CT 06385***





**FOR ALL YOUR  
REAL ESTATE NEEDS**

Direct: 860-443-4400 Cell: 860-625-5255  
Email: [Geoff@CallTheHouseMan.com](mailto:Geoff@CallTheHouseMan.com)  
Website: [www.CallTheHouseman.com](http://www.CallTheHouseman.com)  
Blog: [CTHouseMan.com](http://CTHouseMan.com)

### Jewish Federation – Jewish Leader

If you wish to learn more about community wide and world events, please contact Rebecca Reinhard ([rebecca@jfec.com](mailto:rebecca@jfec.com) or 860-442-8062) at the Jewish Federation and sign up to receive the monthly issue of the *Jewish Leader* if you do not already receive a copy in the mail. You may also see the Federation calendar at [www.jfec.com](http://www.jfec.com).

Ω Ω Ω Ω Ω

### PsychologyCT.com

#### Schaperow Psychology & Associates:

Thorough diagnostic assessments: psychological testing; individual, group, marital, & family therapy

#### Drug & Alcohol Treatment:

Clinicians that specialize in drug & alcohol treatment.

#### And:

#### Cognitive Behavioral Therapy (CBT) Center:

Evidence-based CBT to improve mental health, and decrease stress for certain physical illnesses.

860-447-2047 / [PsychologyCenterOffice@gmail.com](mailto:PsychologyCenterOffice@gmail.com)

### *Why rent offices when you can own?*

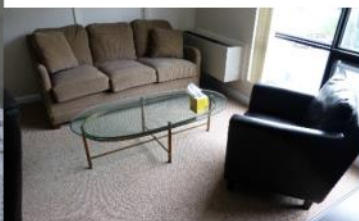
***Owning is almost always far better, so spread the word!***

The Schaperows are selling a portion of their Waterford Professional Complex condos. Email [PsychologyCenterOffice@gmail.com](mailto:PsychologyCenterOffice@gmail.com), or call/text 8602715233 to inquire.

If you know anyone who's leasing, please let them know of this tremendous opportunity and forward them our contact info.

Psychology CT LLC is **seeking renters**, as we have **beautiful offices available** in Waterford. These offices are perfect for professionals (e.g., therapists, massage therapists, small practice attorneys & accountants, certain kinds of physicians, etc.), especially those that don't need a reception area, but may still benefit from a waiting area. Please see

<https://sites.google.com/site/schaperowpsychology/office> for details, or email [psychologycenteroffice@gmail.com](mailto:psychologycenteroffice@gmail.com) for more information.



TEMPLE EMANU-EL  
PO BOX 288  
WATERFORD, CT 06385

Please use PO BOX 288 WATERFORD, CT 06385  
when mailing material to the temple

Non-Profit  
Organization  
U.S. Postage PAID  
New London, CT  
06320  
Permit #480

**Deadline for February 2025 Bulletin is Friday, Jan. 10**

Email your articles to Roberta at [office@tewaterford.org](mailto:office@tewaterford.org)

CHANGE SERVICE REQUESTED

## Our Leadership

**Rabbi** / Marc Ekstrand / [rabbi@tewaterford.org](mailto:rabbi@tewaterford.org)  
**Rabbi Emeritus** / Aaron Rosenberg / [arloveskr@aol.com](mailto:arloveskr@aol.com)  
**Cantorial Soloist** / Sherry Barnes /  
[cantorialsoloist@tewaterford.org](mailto:cantorialsoloist@tewaterford.org)  
**President** / Armi Rowe / [president@tewaterford.org](mailto:president@tewaterford.org)  
**1st Vice President** / John Murphy  
**VP Building and Grounds** / Michael Barnett  
**VP of Religious Practices** / Samuel Winograd  
**Treasurer** / Ian Crawford / [treasurer@tewaterford.org](mailto:treasurer@tewaterford.org)  
**Vice Treasurer** / Bruce Goldstein  
**VP Membership** / Emma Zelken  
**Recording Secretary** / Jo Michaelson  
**Corresponding Secretary** / Robbin Alpert  
**Immediate Past President** / Andrew Parad  
[pastpresident@tewaterford.org](mailto:pastpresident@tewaterford.org)  
**3 Year Trustees:** Byrne Blumer, Andrew Goldman, Nathaniel Rowe,  
Janine Sitko  
**2 Year Trustees:** Sheri Pascal, Emma Zelken, Hali Keeler, Tom Smith  
**1 Year Trustees:** Sue Fornara, Jennifer Zettler, Scott Zettler,  
Carolyn Ziv  
**Security Committee Chair** / Rich McCaffrey

**Social Action Co-Chairs** / Karen Bloustine  
**Sisterhood** / Barbara Senges/ [sisterhood@tewaterford.org](mailto:sisterhood@tewaterford.org)  
**Gift Shop** / Anne Cohn / [judaicashop@tewaterford.org](mailto:judaicashop@tewaterford.org)  
**Brotherhood** / Open / [brotherhood@tewaterford.org](mailto:brotherhood@tewaterford.org)  
**Kitchen Committee Chair** / Erica McCaffrey  
**Religious School Committee Chair** / Jennifer Zettler  
**Religious School Administrator** / Lisa DeVito Marcus/  
[religiousschool@tewaterford.org](mailto:religiousschool@tewaterford.org)  
**Library** / Sheri Pascal  
**Communications Committee Chair:** Sue Fornara  
**Office Administrator** / Roberta Reisner-Winograd /  
[office@tewaterford.org](mailto:office@tewaterford.org)  
**Webmaster** / Aaron Kaplan / [webmaster2@tewaterford.org](mailto:webmaster2@tewaterford.org)  
**Custodian** / Don Kasper  
**Bulletin Editor** / Mimi Perl  
**Temple Location:** 29 Dayton Road, Waterford, CT 06385  
**Temple Mailing Address:** PO Box 288, Waterford, CT 06385  
Office: **860-443-3005**  
Religious School: **860-443-3005**  
Website: [www.tewaterford.org](http://www.tewaterford.org)